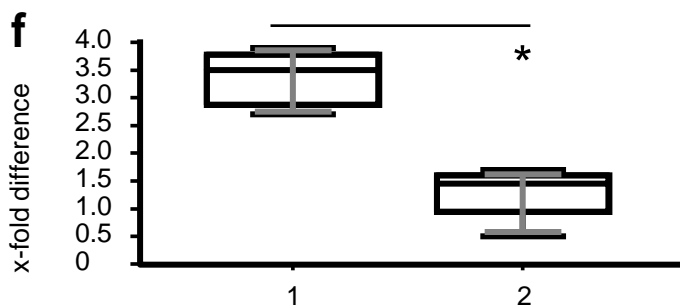
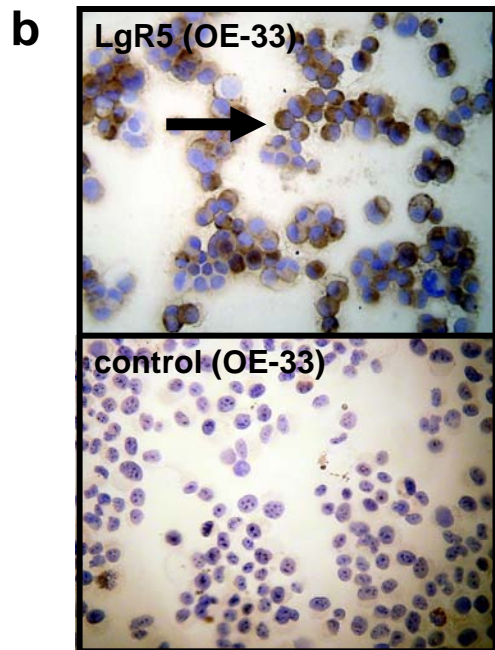


1 = Barrett's esophagus (BE) (n=41)
 2 = Adjacent adenocarcinoma to BE (n=41)
 3 = Adenocarcinoma without BE (n=19)
 4 = Squamous-cell carcinomas (n=10)



1 = Adenocarcinoma with Barrett's esophagus (BE) (n=7)
 2 = Adenocarcinoma without BE (n=8)