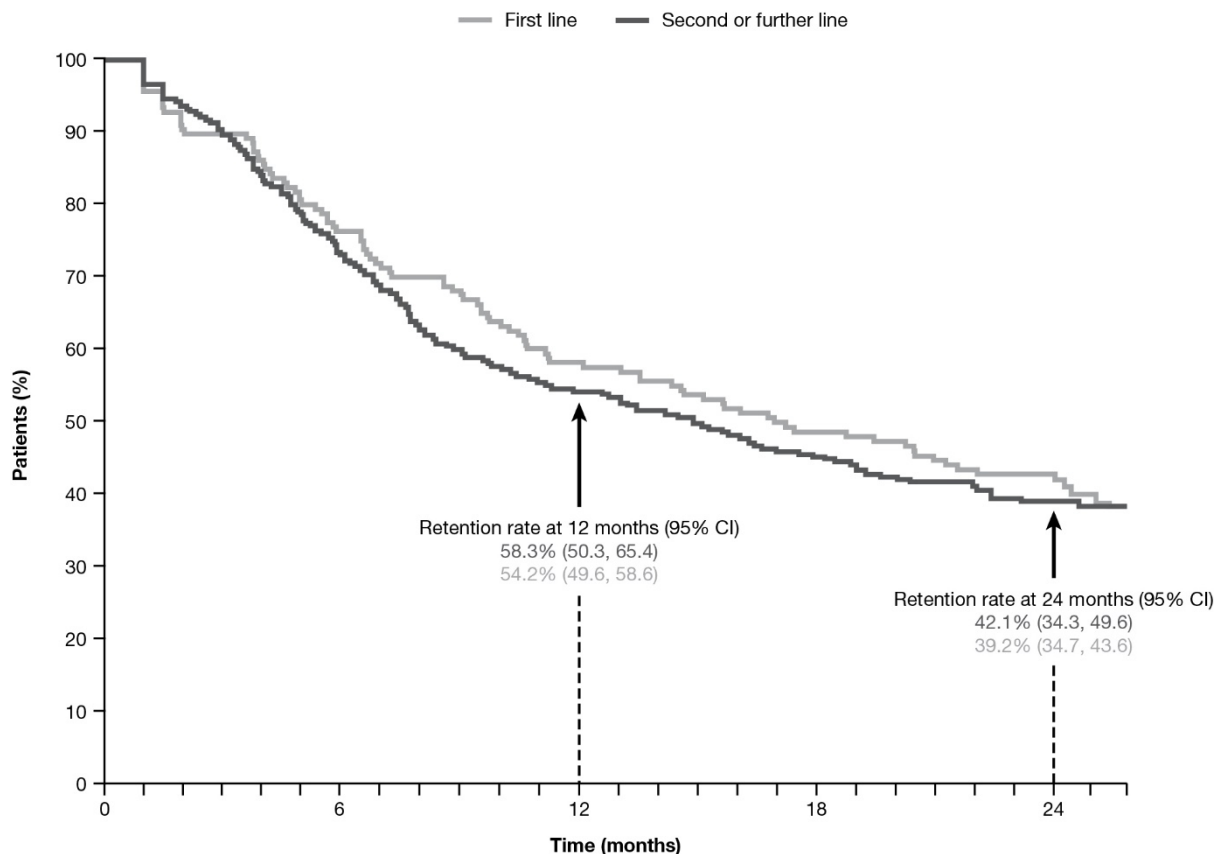


Online Resource Content

Abatacept Retention and Clinical Outcomes in Rheumatoid Arthritis: Real-World Data From the German Cohort of the ACTION Study and a Comparison With Other Participating Countries

Rieke Alten MD, PhD, Eugen Feist, MD, Hanns-Martin Lorenz, MD, Hubert Nüßlein, MD, Reinhard E Voll MD, Melanie Chartier, MSc, Yedid Elbez, MSc Christiane Rauch, MSc

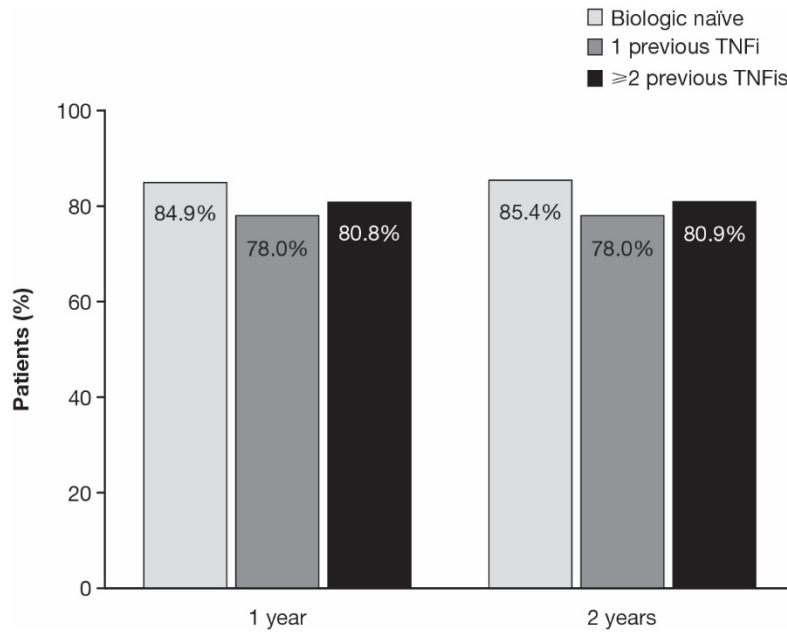
Online resource content 1 (FIGURE). Overall Crude Retention Rate of Abatacept in the German Cohort Over 2 Years by Treatment Line



CI=confidence interval

Online Resource Content

Online resource content 2 (FIGURE). Good/Moderate EULAR Response Rates Based on DAS28 (ESR, Otherwise CRP) at 1 and 2 Years in the German Cohort in Patients who Failed TNFis



CRP=C-reactive protein; DAS28=Disease Activity Score in 28 joints;

ESR=erythrocyte sedimentation rate; EULAR=European League Against

Rheumatism; TNFi=tumor necrosis factor inhibitor