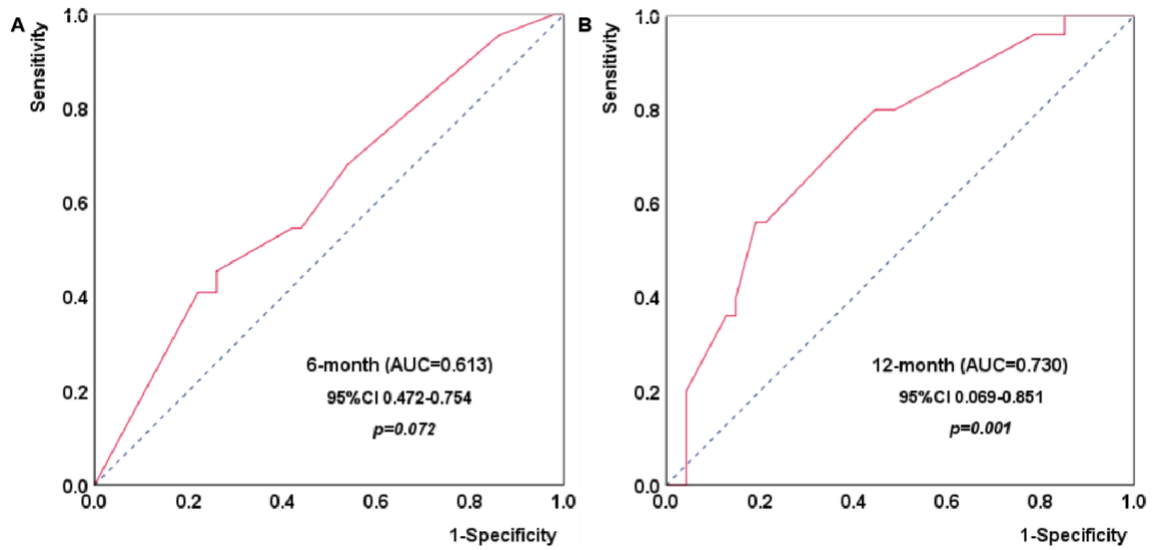
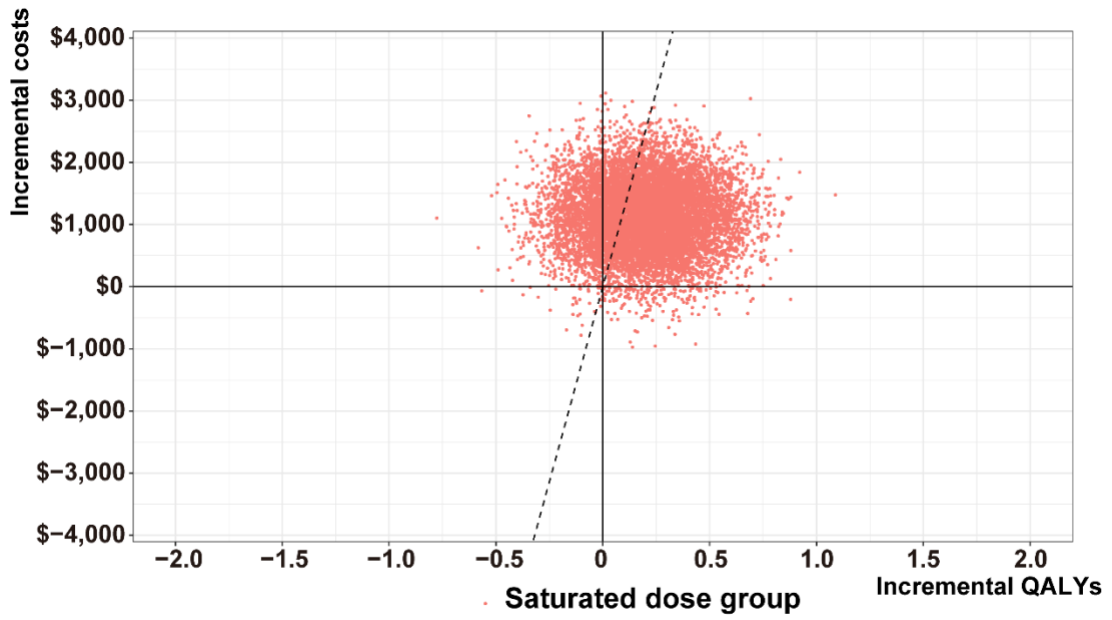


*Supplementary Figure S1* Flow chart of our cohort. MTX-IR, methotrexate inadequate response; MTX, methotrexate; RA, rheumatoid arthritis; DAS28-ESR, disease activity score in 28 joints using erythrocyte sedimentation rate; csDMARDs, conventional synthetic disease-modifying antirheumatic drugs; bDMARDs, biological disease-modifying antirheumatic drugs; tsDMARDs, targeted synthetic disease-modifying antirheumatic drugs



Supplementary Figure S2 ROC curve for remission response at 12 months. ROC, receiver operating characteristics; AUC, area under the curve



Supplementary Figure S3 Incremental cost-effectiveness plane of two groups. QALY, quality-adjusted life year