

Table S1

Variable	Paclitaxel 3w (N=141)	Weekly Paclitaxel (N=81)	Total (N=222)
Age			
< 50	43 (30.5)	25 (30.9)	68
≥ 50	98 (69.5)	56 (69.1)	154
Menopausal Status			
Pre	22 (15.8)	20 (24.7)	42
Post	117 (84.2)	61 (75.3)	178
Performance Status			
0	69 (49.6)	38 (47.5)	107
1, 2 or 3	70 (50.4)	42 (52.5)	112
Estrogen Receptor			
Negative	65 (48.5)	32 (41.6)	97
Positive	69 (51.5)	45 (58.4)	114
Progesterone Receptor			
Negative	70 (53.4)	38 (48.7)	108
Positive	61 (56.6)	40 (51.3)	101
HER2 Status			
Negative	35 (24.8)	40 (49.4)	75
Positive	26 (18.4)	28 (34.6)	54
Unknown	80 (56.7)	13 (16.0)	93
Trastuzumab Use			
No	95 (67.4)	29 (35.8)	124
Yes	46 (32.6)	52 (64.2)	98
PAM50 Subtype			
Basal	35 (24.8)	20 (24.7)	55
HER2-enriched	25 (17.7)	8 (9.9)	33
Luminal A	46 (32.6)	29 (35.8)	75
Luminal B	17 (12.1)	17 (21.0)	34
Normal-like	18 (12.8)	7 (8.6)	25
Proliferation Score			
Mean (SD)	-0.14 (0.40)	-0.13 (0.42)	222
Q1 – Low (< -0.42)	36 (25.5)	21 (25.9)	57
Q1 – High (≥ -0.42)	105 (74.5)	60 (74.1)	165
Median – Low (< -0.14)	73 (51.8)	38 (46.9)	111
Median – High (≥ -0.14)	68 (48.2)	43 (53.1)	111
Q3 – Low (< 0.17)	106 (75.2)	61 (75.3)	167
Q3 – High (≥ 0.17)	35 (24.8)	20 (24.7)	55
First Quartile (< -0.42)	36 (25.5)	21 (25.9)	57
Second Quartile (-0.42 ≤ x < -0.14)	37 (26.2)	17 (21.0)	54
Third Quartile (-0.14 ≤ x < 0.17)	33 (23.4)	23 (28.4)	56
Fourth Quartile (≥ 0.17)	35 (24.8)	20 (24.7)	55

Table S2

Variables	p-value	HR	CI 95%
Treatment Arm (FEC-P as reference) FEC	0.067	1.323	0.981 – 1.784
Age (<50 as reference) >=50	0.551	0.839	0.471 – 1.495
Menopausal status (pre as reference) Postmenopausal	0.129	1.562	0.878 – 2.778
Primary tumor size (T1 as reference) T2 T3	0.003 0.009 0.002	1.572 2.464	1.120 – 2.206 1.412 – 4.302
Nodal status (1-3 as reference) 4+	<0.0001	1.816	1.347 – 2.449
ER (positive as reference) Negative	0.634	1.105	0.732 – 1.670
PR (positive as reference) Negative	0.183	1.302	0.883 – 1.919
Her2 (positive as reference) Negative	0.798	0.949	0.636 – 1.417
11-GeneProliferation (low, first quartile, as reference) High	0.013	1.765	1.130 – 2.758
Subtype PAM50 (luminal A as reference) Rest	0.138	1.361	0.906 – 2.044

Fig. S1

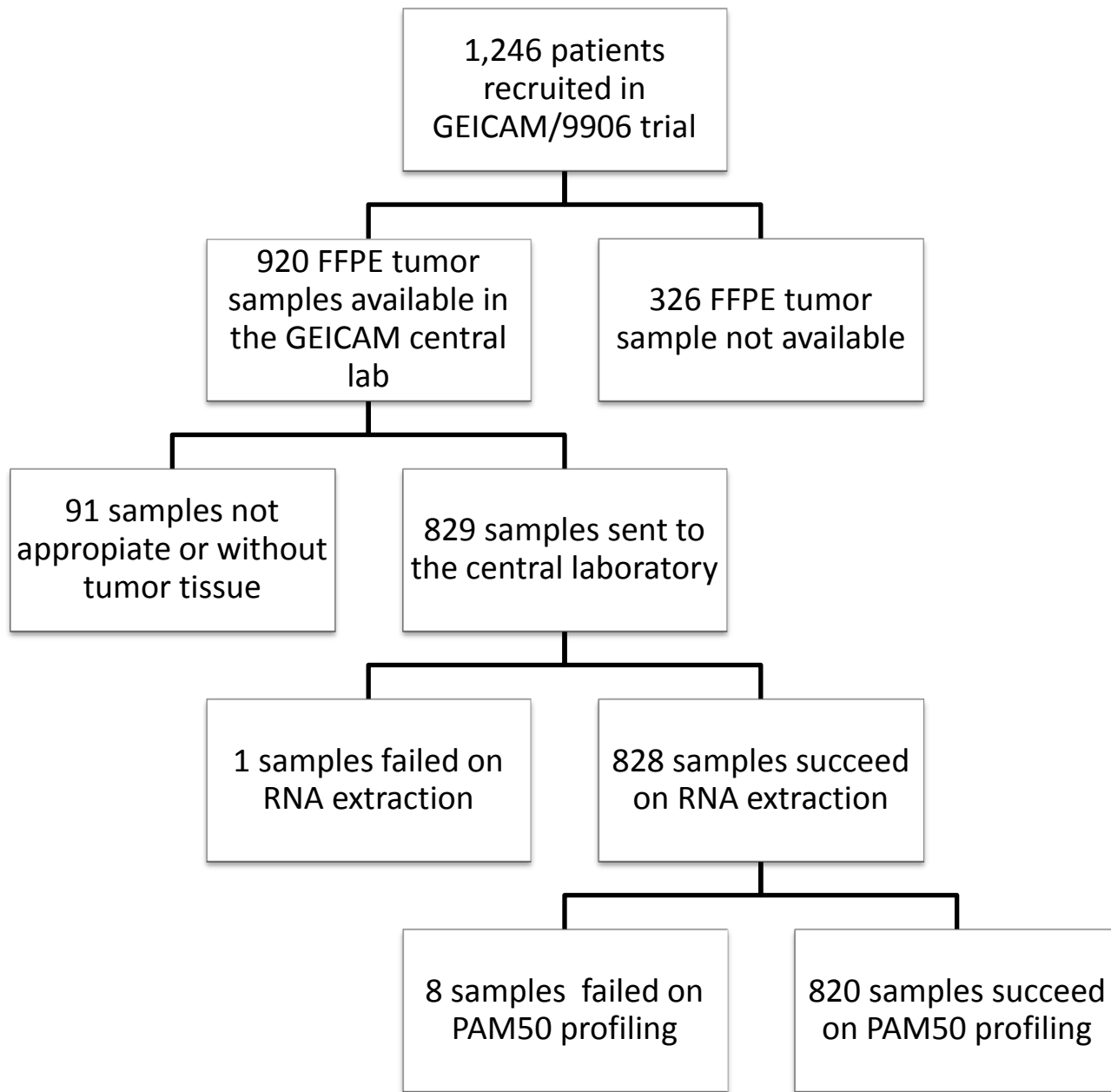


Fig. S2

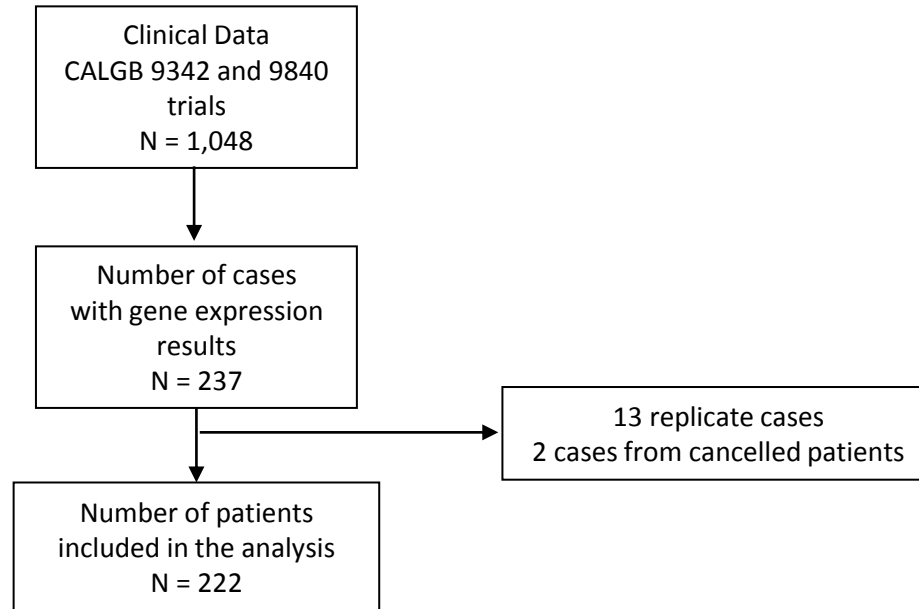
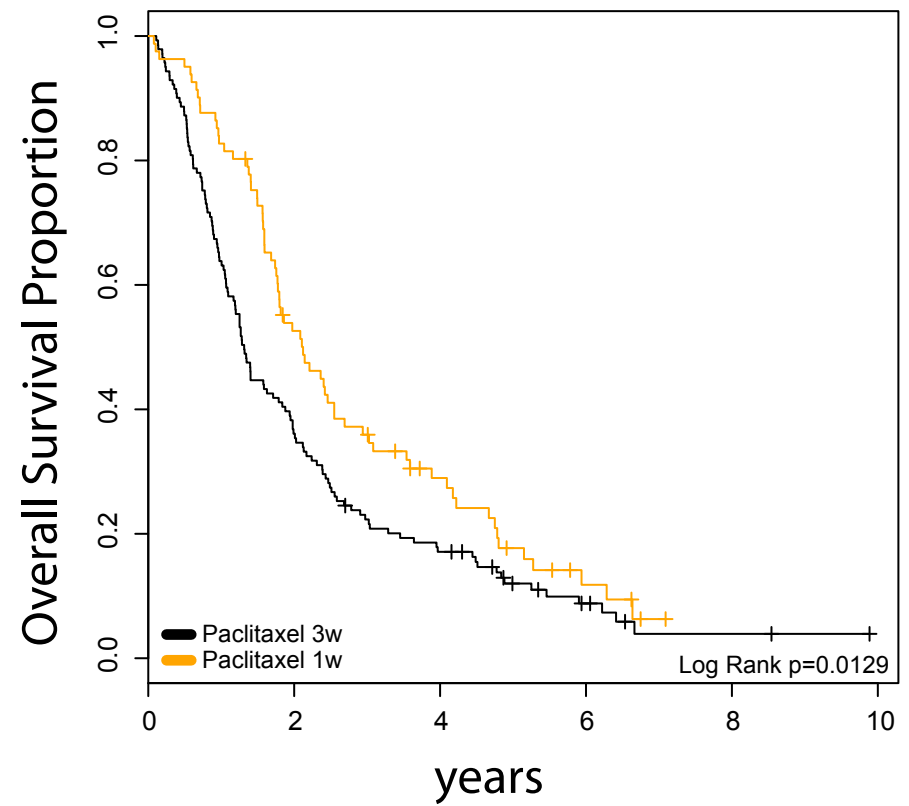


Fig. S3

A



B

