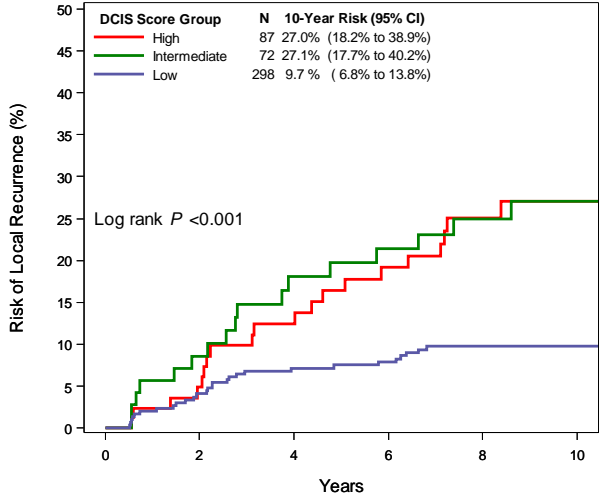


Supplemental Fig 2

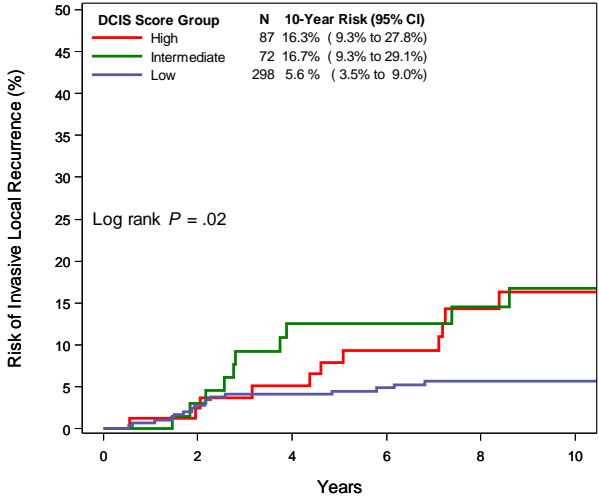
a



Number at risk

High	87	76	67	59	43	32
Intermediate	72	59	50	47	37	24
Low	298	283	262	250	186	125

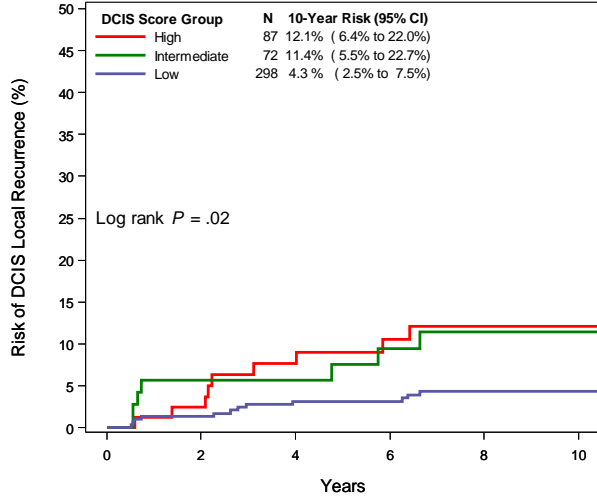
b



Number at risk

High	87	77	69	62	46	34
Intermediate	72	62	52	51	40	27
Low	298	283	263	251	189	128

c



Number at risk

High	87	76	67	59	43	32
Intermediate	72	59	50	47	37	24
Low	298	283	262	250	186	125