

**High *PTEN* gene expression is a negative prognostic marker in human primary breast cancers with preserved p53 function**

**Breast Cancer Research and Treatment**

**Authors:**

Synnøve Yndestad<sup>1,2</sup>, Eilin Austreid<sup>1</sup>, Stian Knappskog<sup>1,2</sup>, Ranjan Chrisanthar<sup>3</sup>, Peer Kåre Lilleng<sup>4,5</sup>, Per Eystein Lønning<sup>1,2</sup>, Hans Petter Eikesdal<sup>1,2\*</sup>

**Author details:**

<sup>1</sup>Section of Oncology, Department of Clinical Science, University of Bergen, Bergen, Norway.

<sup>2</sup>Department of Oncology, Haukeland University Hospital, Bergen, Norway.

<sup>3</sup>Section of Molecular Pathology, Department of Pathology, Oslo University Hospital, Oslo, Norway.

<sup>4</sup>Department of Pathology, Haukeland University Hospital, Bergen, Norway.

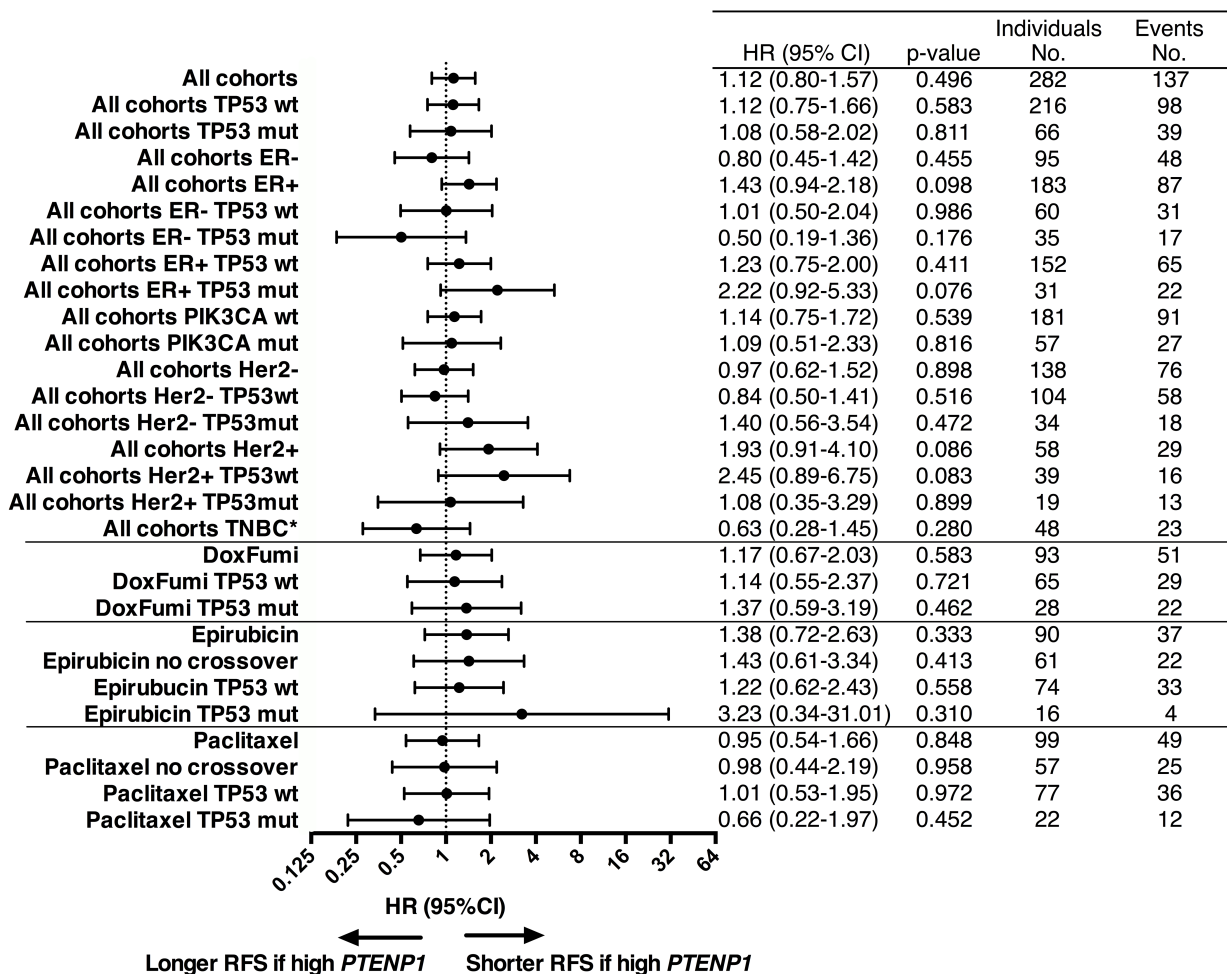
<sup>5</sup>Laboratory of Pathology, Department of Clinical Medicine, University of Bergen, Bergen, Norway.

**\*Correspondence:** [hans.eikesdal@k2.uib.no](mailto:hans.eikesdal@k2.uib.no)

## Online Resource 4

**a-b** Forest plot for the association between tumor *PTEN pseudogene (PTENPI)* gene expression level and recurrence-free (**a**) or disease-free survival (**b**) in patients with locally advanced breast cancer. Results are presented as individual hazard ratios (HRs) with corresponding 95% confidence intervals (CIs) for Study 1 (doxorubicin trial), Study 2 (FUMI trial) and Study 3 (epirubicin/paclitaxel trial) combined (i.e. all cohorts) or split by subgroups. HR>1 indicates that the survival of patients with tumor *PTENPI* gene expression above the median (*PTENPI* high) is shorter than that of patients with *PTENPI* low tumors, while HR<1 indicates the opposite. RFS: recurrence-free survival, DSS: disease-specific survival, wt: wildtype, mut: mutated, ER: estrogen receptor, PGR: progesterone receptor, TNBC: triple negative breast cancer (ER/PGR/HER2 negative breast cancer), \*for patients in Study 1 and 2 PGR status was not available, and TNBC was defined as ER/HER2 negative tumors. \*\*one case was censored before the earliest event in a stratum

**a**



**b**

