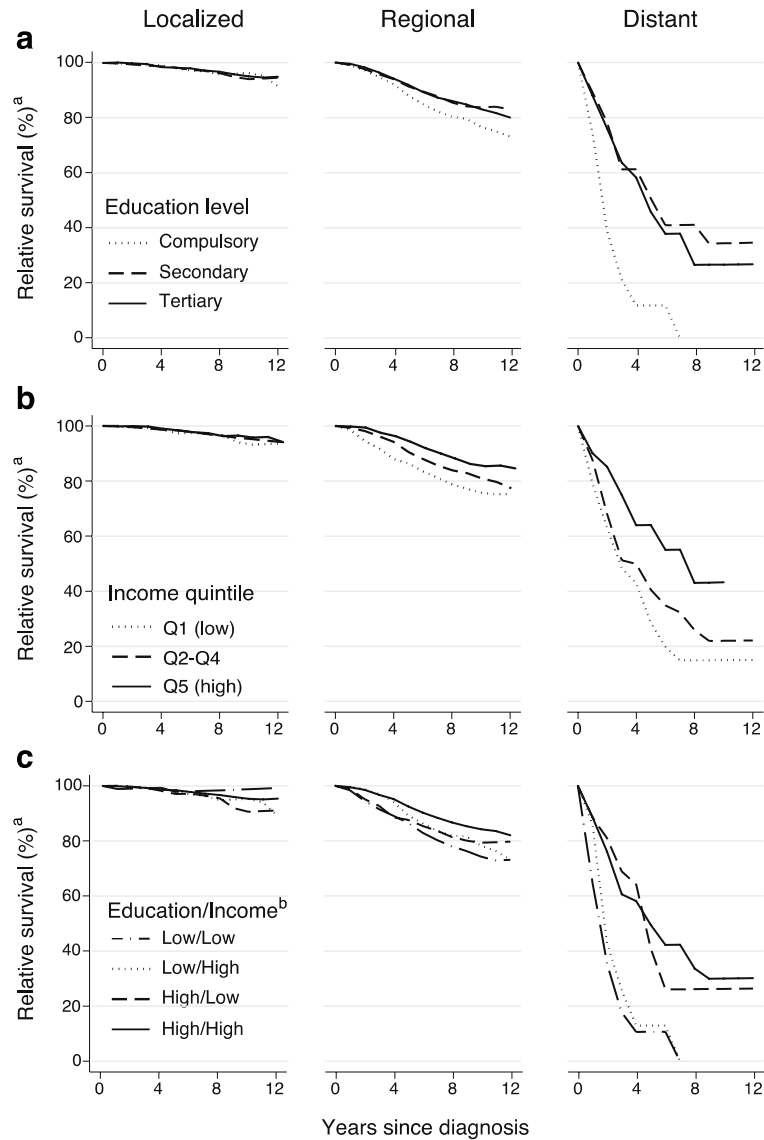


## Online Resource 1

Non-parametric Pohar Perme estimates of stage-specific relative survival up to 12 years from diagnosis, by **a)** education level, **b)** income quintile and **c)** combined education/income group. Patients diagnosed at 30-48 years during 2005-2015 (n = 4,985).



<sup>a</sup>Pohar Perme estimates of relative survival of breast cancer patients, compared to the expected survival of the Norwegian female population of the same age and calendar year as the patients.

<sup>b</sup>Education/Income group: Low/Low: Compulsory/Income quintile Q1; Low/High: Compulsory/Income quintiles Q2-Q5; High/Low: Secondary-Tertiary/Q1; High/High: Secondary-Tertiary/Q2-Q5.

**Journal:** Breast Cancer Research and Treatment

**Title:** Stage-specific survival has improved for young breast cancer patients since 2000: but not equally

**Authors:** Cassia Bree Trewin, Anna Louise Viktoria Johansson, Kirsti Vik Hjerkind, Bjørn Heine Strand, Cecilie Esholt Kiserud, Giske Ursin.

**Corresponding author:** Cassia Bree Trewin, Cancer Registry of Norway,  
[cassie.trewin@kreftregisteret.no](mailto:cassie.trewin@kreftregisteret.no)