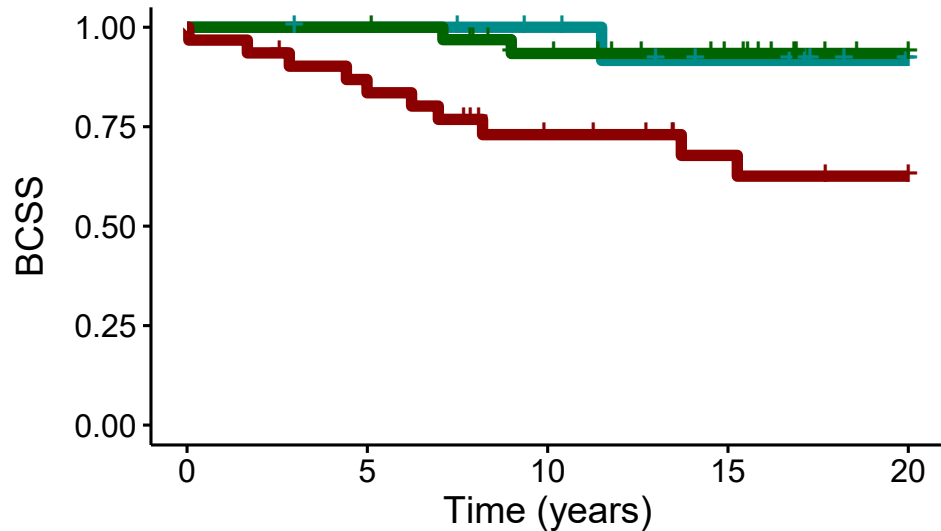


A

Node negative without censoring 2nd primair

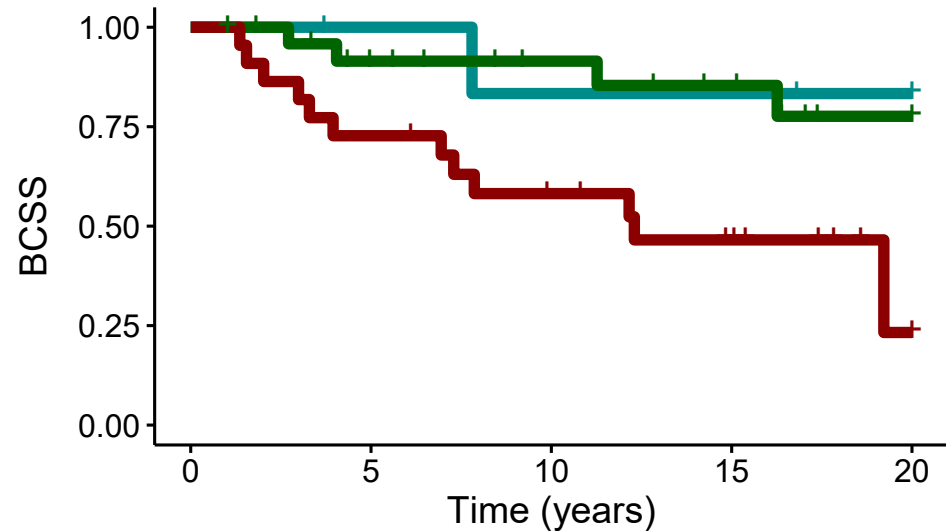
Mammprint ■ ultralow ■ low risk ■ high risk

Number at risk

■	16	15	13	9	4
■	33	33	26	20	12
■	31	25	18	13	11

B

Node positive without censoring 2nd primair

Mammprint ■ ultralow ■ low risk ■ high risk

Number at risk

■	7	6	5	5	4
■	26	19	15	12	7
■	22	16	11	7	1