

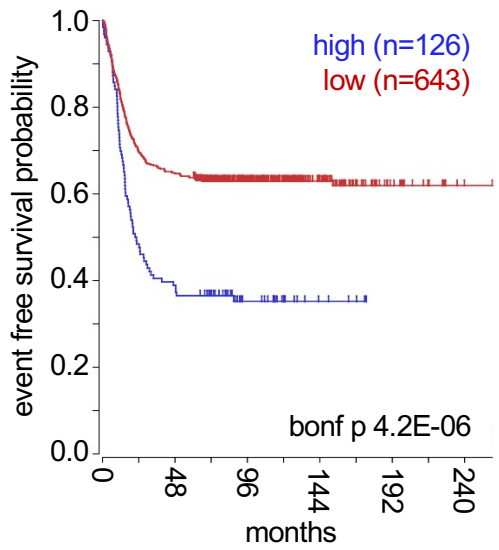
Supplementary Figure 1. Associations of RTK gene expression to neuroblastoma patient survival by phylogenetic classification.

Class	Family	RTK	786 Cangelioli	649 Kocac	498 SEQC RPM	498 SEQC custom	283 Primary NRD	251 Oberthuer	249 Asgharzadeh	102 Seeger	101 Maris	88 Versteeg	score
I	EGRF	EGRF											-2
	ERBB2	ERBB2	7.7E-03										32
	ERBB3*	ERBB3*	2.6E-08	2.8E-05	4.9E-08	2.8E-09	6.8E-06						54
	ERBB4	ERBB4											-10
II	INSR	IGF1R	3.5E-06	8.6E-08	9.3E-03	2.5E-03	5.3E-04						55
	INSR	INSR											21
	INSRR	INSRR	3.1E-06										73
	PDGFR	PDGFRB	4.2E-06	4.6E-03	8.0E-05	3.9E-04	1.8E-03						-85
	PDGFRB	PDGFRB											12
	CSF1R	CSF1R	2.5E-07	1.8E-06									40
	KIT	KIT	2.2E-07	2.1E-03									-71
	FLT3	FLT3	4.5E-02	2.0E-07									40
IV	VEGFR	FLT1											8
	KDR	KDR	6.7E-03	1.1E-02									51
	FLT4	FLT4											-1
V	FGFR	FGFR1											-25
	FGFR2	FGFR2	6.6E-04	1.4E-03	6.2E-08	6.8E-03	2.0E-01	1.2E-02	2.3E-02	1.1E-02			-50
	FGFR3	FGFR3											-30
	FGFR4	FGFR4											22
VI	CCK	PTK7*	1.7E-05										-20
	TRK	NTRK1	3.4E-33	6.0E-23	4.5E-22	5.2E-23	4.2E-22						130
	NTRK2	NTRK2											-21
	NTRK3	NTRK3											42
VIII	HGR	MET	5.6E-11	8.7E-08									-54
	MST1R	MST1R	3.0E-16	6.4E-12									56
IX	EphR	EphA1											30
	EphA2	EphA2	4.7E-02	1.2E-03									30
	EphA3	EphA3											-10
	EphA4	EphA4	2.5E-02	2.6E-03	1.9E-02	1.3E-02	8.8E-04	2.0E-06	6.2E-05				43
	EphA5	EphA5	1.1E-20	8.2E-13	4.0E-12	1.8E-13	1.7E-14						104
	EphA6	EphA6											30
	EphA7	EphA7	2.5E-02										62
	EphA8	EphA8											10
	EphA10*	EphA10*	3.7E-12	3.6E-15									65
	EphB1	EphB1											-32
	EphB2	EphB2											10
	EphB3	EphB3	4.2E-03	5.8E-04									60
	EphB4	EphB4		3.3E-03									-30
	EphB6*	EphB6*	2.0E-08	1.0E-03									60
X	AXL	AXL	1.4E-06	5.5E-10									44
	MERTK	MERTK	4.2E-04	1.1E-04									41
	TYRO3	TYRO3	2.6E-03										-20
XI	TIE	TIE1											-20
	TEK	TEK	1.9E-05	5.9E-03									30
XII	RYK	RYK*	7.6E-11	3.0E-05									-65
	DDR	DDR1											26
	DDR2	DDR2	1.2E-15	1.4E-13	2.0E-10								-102
XIV	RET	RET	5.4E-14	1.0E-11	6.4E-16								-102
XV	ROS	ROS1	9.2E-09										10
XVI	LTKR	LTK											23
	ALK	ALK	2.7E-08	2.4E-06									-70
XVII	ROR	ROR1*											-60
	ROR2*	ROR2*	4.2E-09	7.1E-05									43
XVIII	Musk	MUSK		7.6E-03									12
XIX	LHR	AATK	8.1E-05	6.7E-03									43
	LMTK2	LMTK2		7.9E-05									-10
	LMTK3	LMTK3	1.4E-10	9.1E-12									43
XX	STYK	STYK1*	2.5E-02	1.8E-03									-30

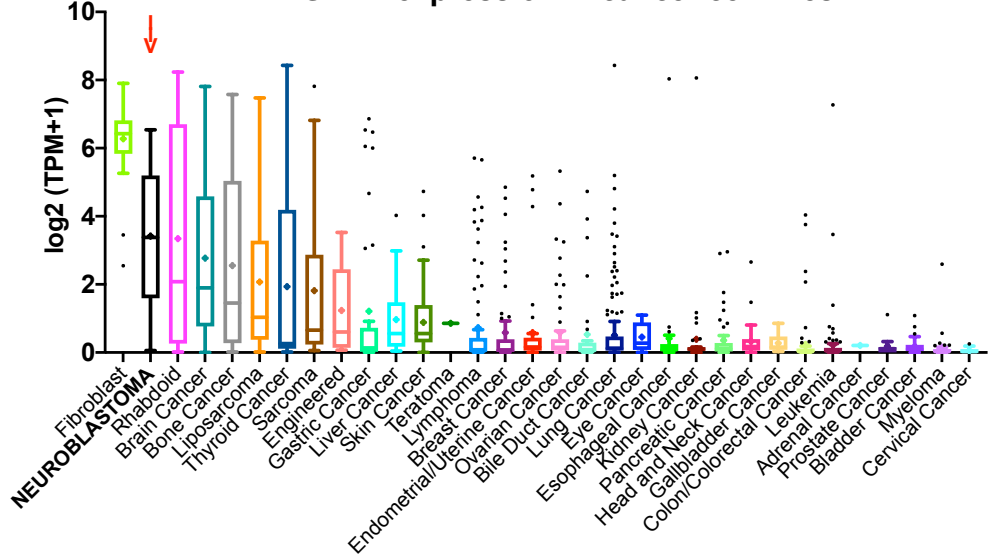
negative correlations	5.0E-02 to 9.9E-04	5.0E-02 to 9.9E-04
	1.0E-05 to 9.9E-09	1.0E-05 to 9.9E-09
	<1.0E-10	1.0E-10 to 9.9E-19
		<4.0E-20

Supplementary Figure 2.

a *PDGFRA* expression correlation



b *PDGFRA* expression in cancer cell lines



c *RYK/ROR* expression in tumor samples

