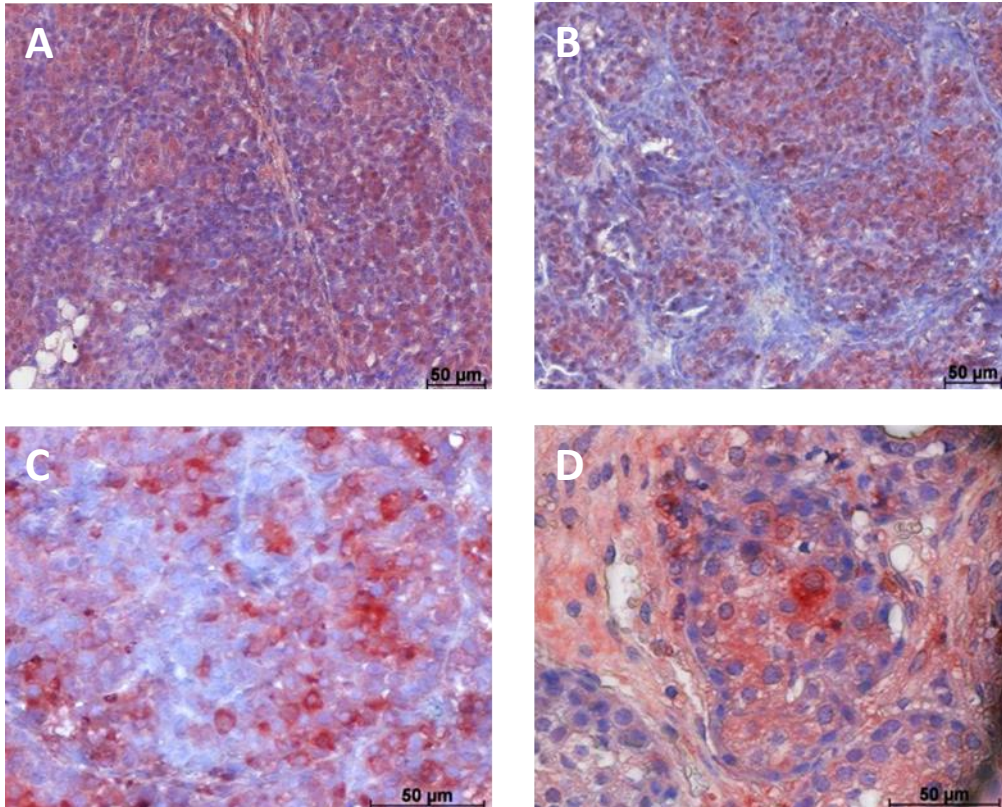


Suppl. Figure 1



Immunohistochemical detection of relaxin expression in Tg(MMTV-erbB2) mouse breast cancers showing focal as well as diffuse positivity of the tumour cells without any difference between controls and relaxin-treated animals:

A, C = controls

B, D = + relaxin

A, B = magnification 20x

C, D = magnification 40x