

Title: Human factors evaluation of HeartMate 3 left ventricular assist device peripherals: An eye tracking supported simulation study.

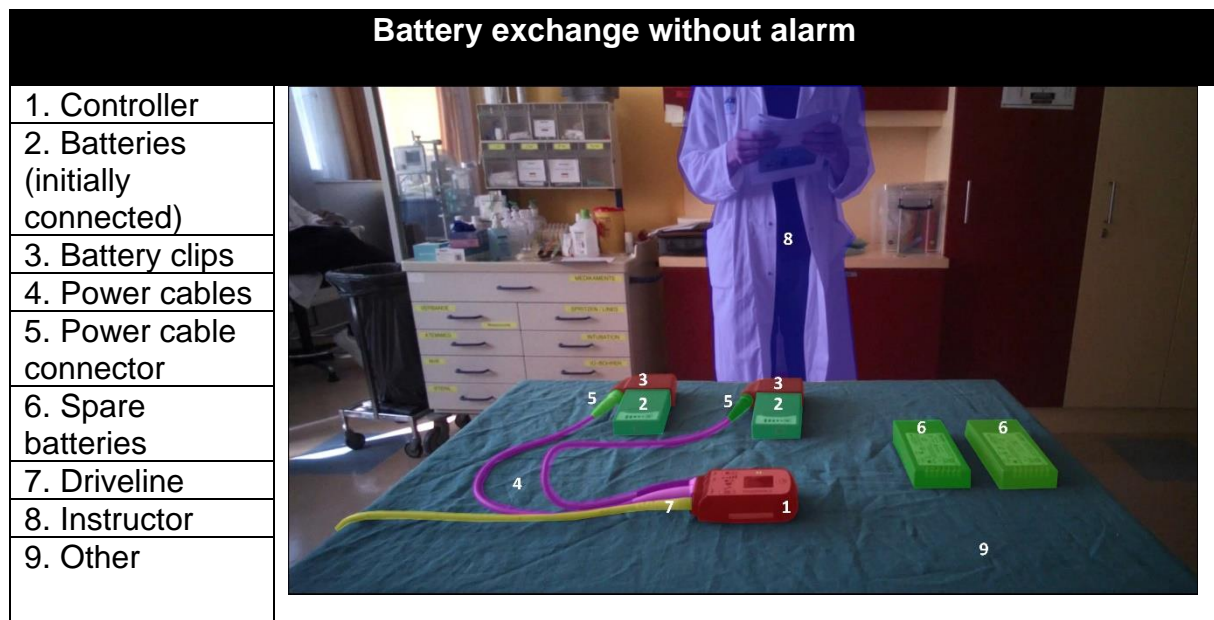
Journal name: Journal of Medical Systems

Authors: Gregor Widhalm¹, Theodor Abart¹, Moritz Noeske¹, Lisa Kumer², Katharina Ebenberger¹, Clemens Atteneder¹, Angelika Berger², Günther Laufer¹, Dominik Wiedemann¹, Daniel Zimpfer¹, Heinrich Schima^{1,3,4}, Michael Wagner², Thomas Schlöglhofer^{1,3,4}

¹Department of Cardiac Surgery, Medical University of Vienna, Vienna, Austria; ²Division of Neonatology, Pediatric Intensive Care and Neuropediatrics, Department of Pediatrics, Comprehensive Center for Pediatrics, Medical University of Vienna, Vienna, Austria; ³Ludwig Boltzmann Institute for Cardiovascular Research, Vienna, Austria; ⁴Center for Medical Physics and Biomedical Engineering, Medical University of Vienna, Vienna, Austria

Email corresponding author: thomas.schloeglhofer@meduniwien.ac.at

Supplementary File 2: Defined areas of interest (AOIs) per provided HeartMate 3 component for the first five simulated scenarios.



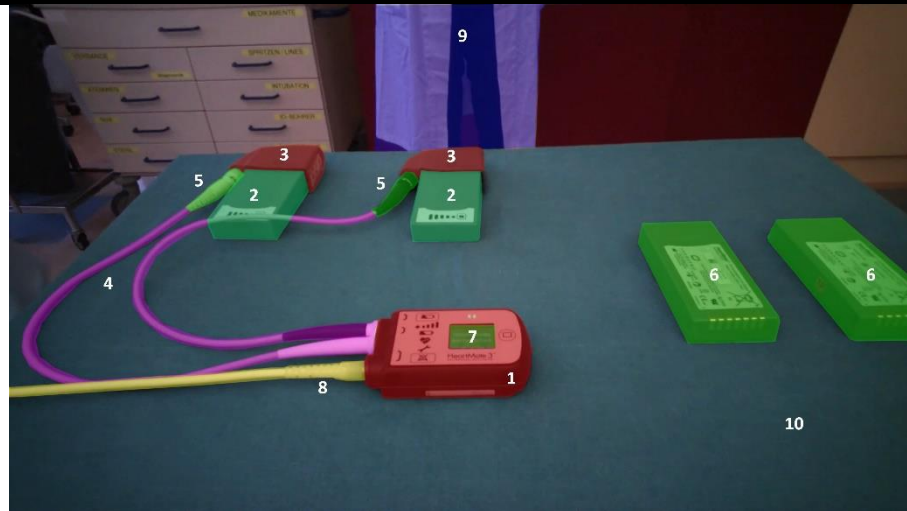
AC power connection and reconnection of batteries

1. Controller
2. Batteries (initially connected)
3. Battery clips
4. Power cables
5. Power cable connector
6. HM3 Mobile Power Unit
7. AC power cable
8. Power socket
9. Driveline
10. Instructor
11. Other



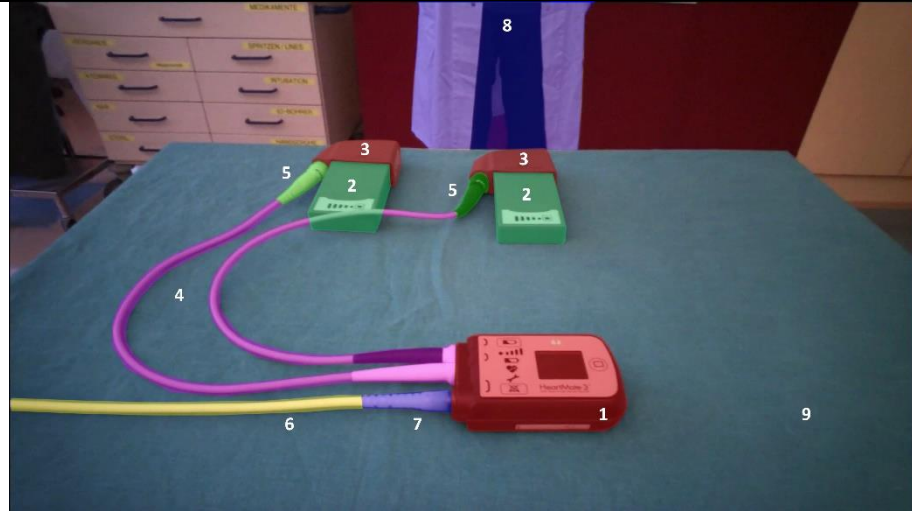
Battery exchange as reaction to alarm

1. Controller
2. Batteries (initially connected)
3. Battery clips
4. Power cables
5. Power cable connector
6. Spare batteries
7. Display (Warning)
8. Driveline
9. Instructor
10. Other



Driveline dis- and reconnection

1. Controller
2. Batteries (initially connected)
3. Battery clips
4. Power cables
5. Power cable connector
6. Driveline
7. Driveline connector
8. Instructor
9. Other



Emergency controller exchange as reaction to alarm

1. Controller
2. Batteries (initially connected)
3. Battery clips
4. Power cables
5. Power cable connector
6. Spare controller
7. Spare controller power cables
8. Spare power cable connector
9. Driveline
10. Driveline connector
11. Instructor
12. Other

