

Inflammation Research

Increased frequencies of circulating CXCL10-, CXCL8- and CCL4-producing monocytes and Siglec-3-expressing myeloid dendritic cells in Systemic Sclerosis patients.

Tiago Carneiro^{1,2,3*}, Sara Horta^{1,4*}, Joel A.G. van Roon^{2,3}, Mariana Santiago⁵, Maria J. Salvador⁵, Hélder Trindade¹, Timothy R.D.J. Radstake^{2,3}, José A.P. da Silva^{5,6}, Artur Paiva^{1,7}

Affiliations:

¹Blood and Transplantation Center of Coimbra, Portuguese Institute of Blood and Transplantation, Coimbra, Portugal

²Department of Rheumatology & Clinical Immunology, University Medical Center Utrecht, the Netherlands.

³Laboratory of Translational Immunology, University Medical Center Utrecht, the Netherlands.

⁴Department of Chemistry, University of Aveiro, Aveiro, Portugal

⁵Department of Rheumatology, Coimbra University Hospital Center, Coimbra, Portugal,

⁶Faculty of Medicine, University of Coimbra, Coimbra, Portugal

⁷Flow Cytometry Unit, Clinical Pathology Service, Coimbra University Hospital Center, Coimbra, Portugal

*T. Carneiro and S. Horta equally contributed to this work.

Correspondent author:

Artur Paiva, *PhD*

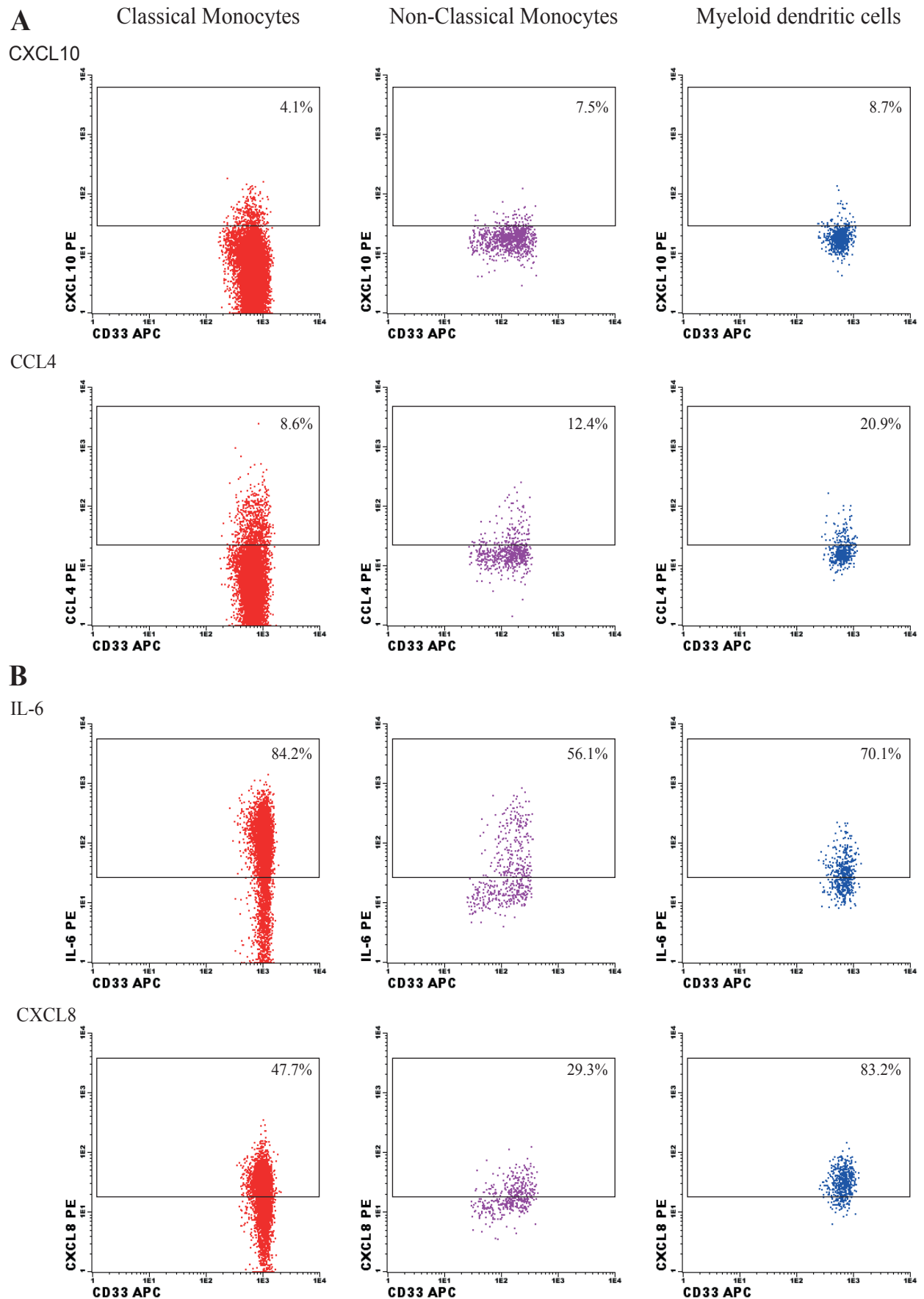
Unidade de Gestão Operacional de Citometria, Serviço de Patologia Clínica

Praceta Prof. Mota Pinto, Ed. S. Jerónimo, 3º piso, 30001-301 Coimbra, Portugal

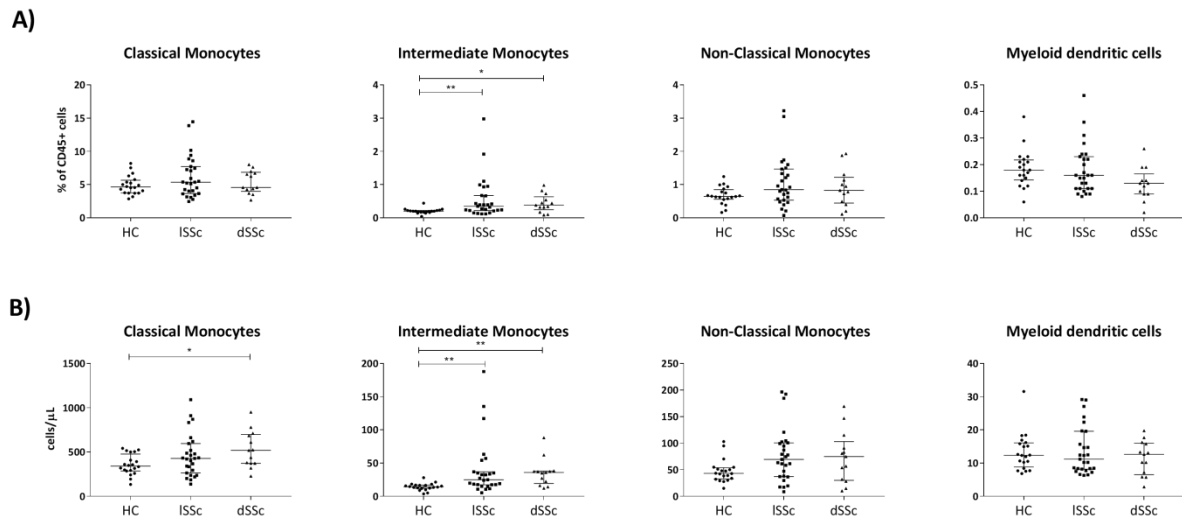
Tel: (+351) 239400400

E-mail: artur.paiva@chuc.min-saude.pt

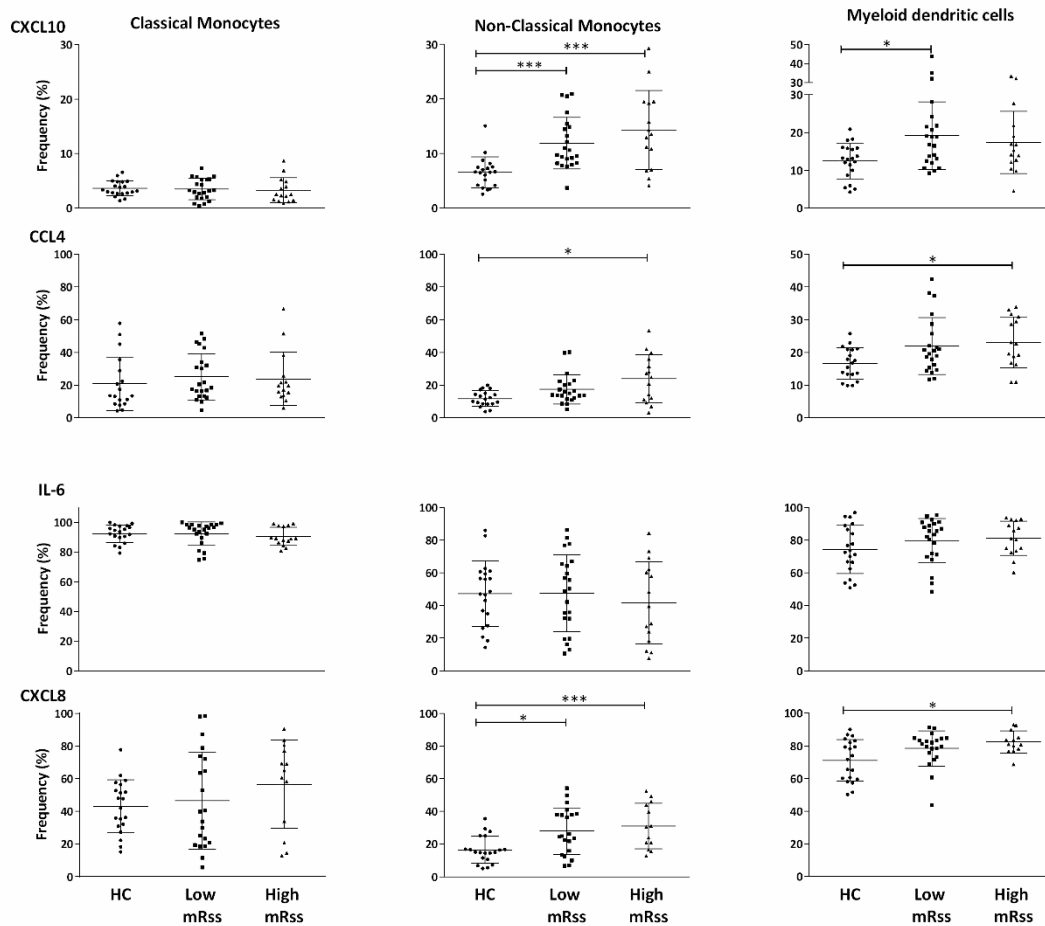
Supplementary Fig. S1. Representative flow cytometry dot plots illustrating the quantification (%) of classical and non-classical monocytes and myeloid dendritic cells (mDC) A) spontaneously producing CXCL10 and CCL4 as well as B) IL-6 and CXCL8 upon in vitro stimulation with LPS/IFN- γ . One representative HC is depicted.



Supplementary Fig. S2. Quantification of classical, intermediate and non-classical monocytes subsets and myeloid dendritic cells (mDC) in SSc patients. A) Percentage within the CD45+ cells and B) absolute numbers indicated in number of cells *per* μL . Statistically significant differences were considered when * $p < 0.05$ and *** $p < 0.01$ (Kruskal-Wallis followed by Mann-Whitney U test).



Supplementary Fig. S3. Frequency (%) of classical, non-classical monocytes and myeloid dendritic cells (mDCs) spontaneously producing CXCL10 and CCL4 cells and CXCL8 and IL-6 upon *in vitro* stimulation with LPS/IFN- γ , clustering SSc patients according to high and low mRss (base on the average of the score: 12). Statistically significant differences were considered when * $p < 0.05$ and *** $p < 0.01$ (Kruskal-Wallis followed by Mann-Whitney U test).



Supplementary Fig. S4. Frequency (%) of classical, non-classical monocytes and myeloid dendritic cells (mDCs) spontaneously producing CXCL10 and CCL4 cells and CXCL8 and IL-6 upon *in vitro* stimulation with LPS/IFN- γ , according to the treatment with corticosteroids.

