

SUPPLEMENTARY MATERIALS

Real-World Biologic Adherence, Persistence, and Monotherapy Comparisons in the U.S. Patients with Psoriasis: Results from IBM MarketScan® Databases

Craig Leonardi, MD¹; Baojin Zhu, PhD²; William N. Malatestinic, Pharm D, MBA²; William J. Eastman, MD²; Jiaying Guo, MS²; Mwangi J. Murage, PhD, MPH²; Casey Kar-Chan Choong, MPH²; Russel Burge, PhD^{2,3}; Andrew Blauvelt, MD, MBA⁴

Corresponding Author:

Prof. Craig Leonardi

Saint Louis University School of Medicine

1034 South Brentwood Boulevard

Saint Louis, MO 63104

United States of America

Craig.Leonardi@centralderm.com

+13147215565

¹Saint Louis University School of Medicine, Saint Louis, USA

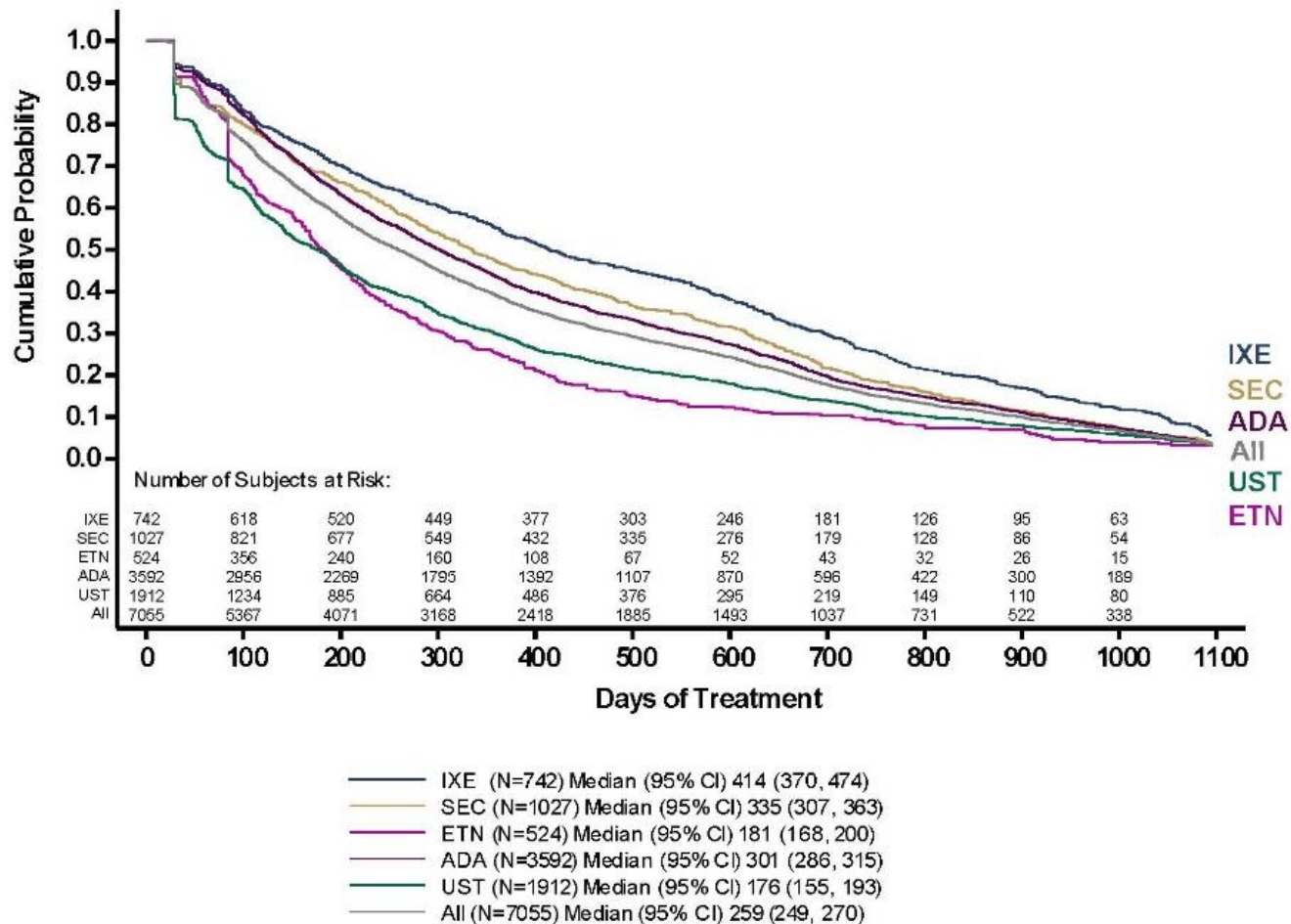
²Eli Lilly and Company, Indianapolis, Indiana, USA

³University of Cincinnati, Cincinnati, Ohio, USA

⁴Oregon Medical Research Center, Portland, USA

Email address and phone number for each author:

Author	Email	Phone
Craig Leonardi	Craig.Leonardi@centralderm.com	+1 314-721-5565
Baojin Zhu	zhu_baojin@lilly.com	+1 317-225-6799
William N. Malatestinic	malatestinic_william_n@lilly.com	+1 317-997-2005
William J. Eastman	eastman_william_j@lilly.com	+1 317-460-5409
Jiaying Guo	guo_jiaying@lilly.com	+1 317-433-4445
Mwangi J. Murage	murage_mwangi_james@lilly.com	+1 317-460-3619
Casey Kar-Chan Choong	choong_kar-chan@lilly.com	+1 317-430-8648
Russel Burge	burge_russel_thomas@lilly.com	+1 317-225-9383
Andrew Blauvelt	ablauvelt@oregonmedicalresearch.com	+1 503-245-1525



Supplementary Figure 1. Time to discontinue the index biologic ≥ 1 -year period. Days to discontinue the index biologics in the minimum 1-year follow-up and maximum 3-years follow-up period of IXE, all other biologics, ADA, ETN, SEC, and UST. Observed data are presented. All Includes SEC, UST, ADA, and ETN. ADA=adalimumab; CI=confidence interval; ETN=etanercept; IXE=ixekizumab; SEC=secukinumab; UST=ustekinumab.

