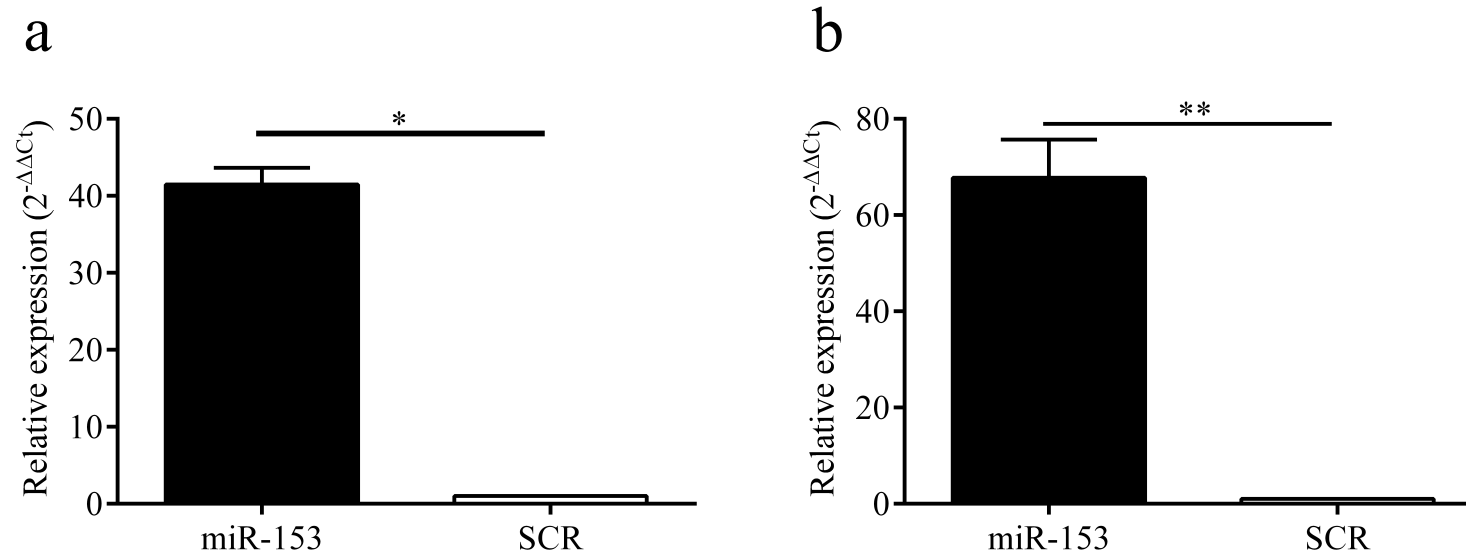


ESM Fig 3.



**ESM Fig. 3.** Cultures of MIN6B cells (a) and SH-SY5Y cells (b) were transfected with 50 nmol/l (final concentration) of miR-153 or SCR. After incubation for 48hrs total RNA was collected and miR-153 transcript levels were measured by Q-PCR. Experiments were performed in triplicates ( $n > 3$ ) and normalized to U6 in the case of MIN6B cells and sno-135 in the case of SH-SY5Y cells. Significance was determined using Mann-Whitney U test. \* $P < 0.05$ , \*\* $P < 0.01$ .