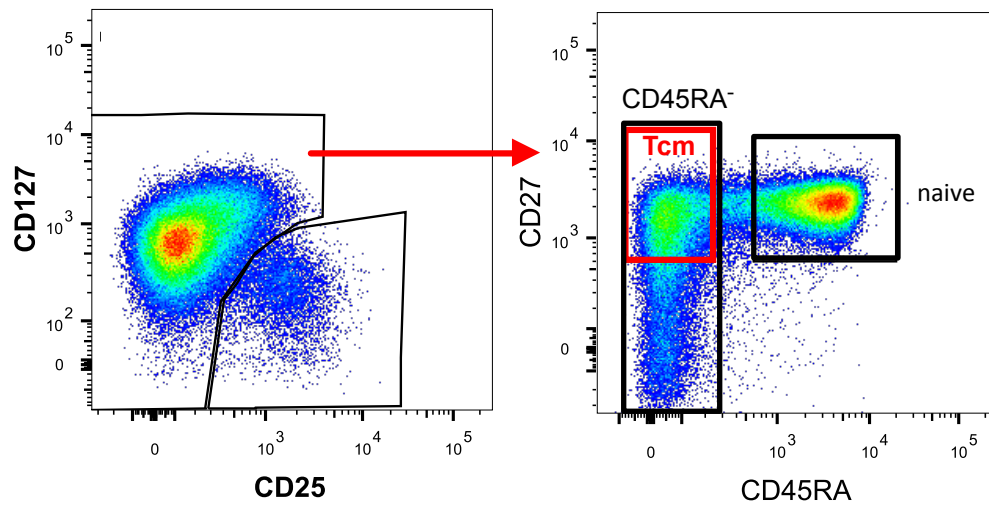
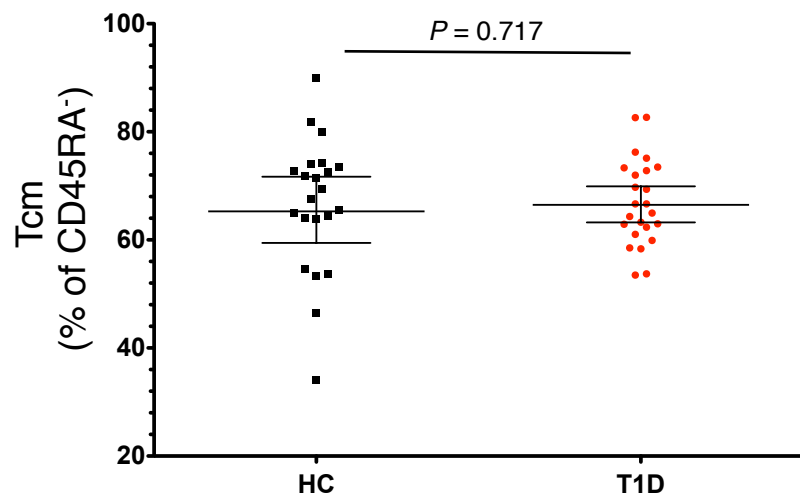
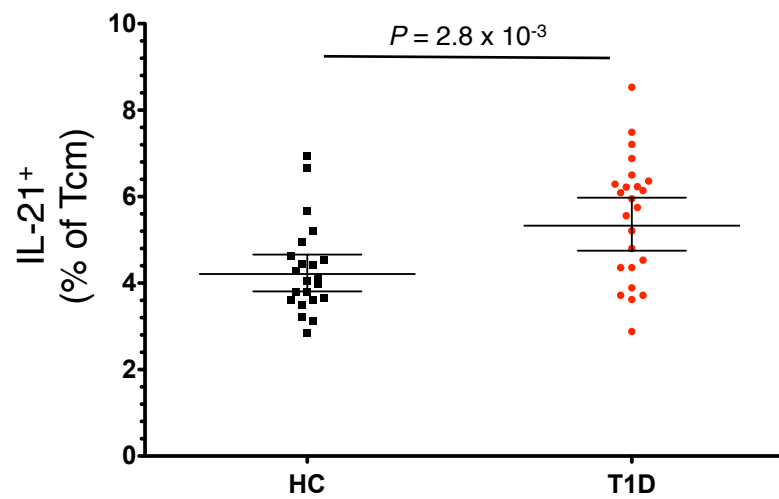


a**b****c**

ESM Figure 4. Frequency of the CD45RA⁻CD27⁺ central memory T cell (Tcm) compartment is not altered in T1D patients. (a) Gating strategy for the delineation of the CD27⁺ Tcm subset out of the total CD45RA⁻ memory T cell compartment in cryopreserved PBMCs following in vitro stimulation with PMA and ionomycin. (b) Frequency of the Tcm memory subset (geometric mean +/- 95% CI) was compared in T1D patients (N = 24) and healthy donors (N = 22). (c) Frequency of IL-21⁺ Tcm cells (geometric mean +/- 95% CI) was compared in T1D patients (N = 24) and healthy donors (N = 22). *P* values were calculated by linear regression of the log-transformed data. HC, healthy control; T1D, type 1 diabetic patient.