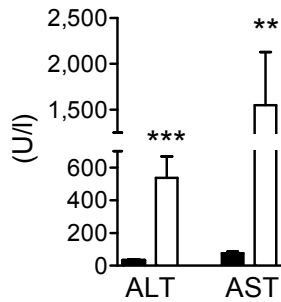


Electronic Supplementary Material

Lysosomal acid lipase regulates VLDL synthesis and insulin sensitivity in mice

by B. Radovic et al.

ESM Figure 2 (relates to Figure 3)



ESM Fig. 2: Increased alanine aminotransferase (ALT) and aspartate aminotransferase (AST) concentrations in *Lal*^{-/-} mice. Plasma values of ALT and AST in 10-14 weeks old *Wt* (black bar) and *Lal*^{-/-} (white bar) mice. Data represent mean values (n=5) + SD. ** $p \leq 0.01$, *** $p \leq 0.001$.