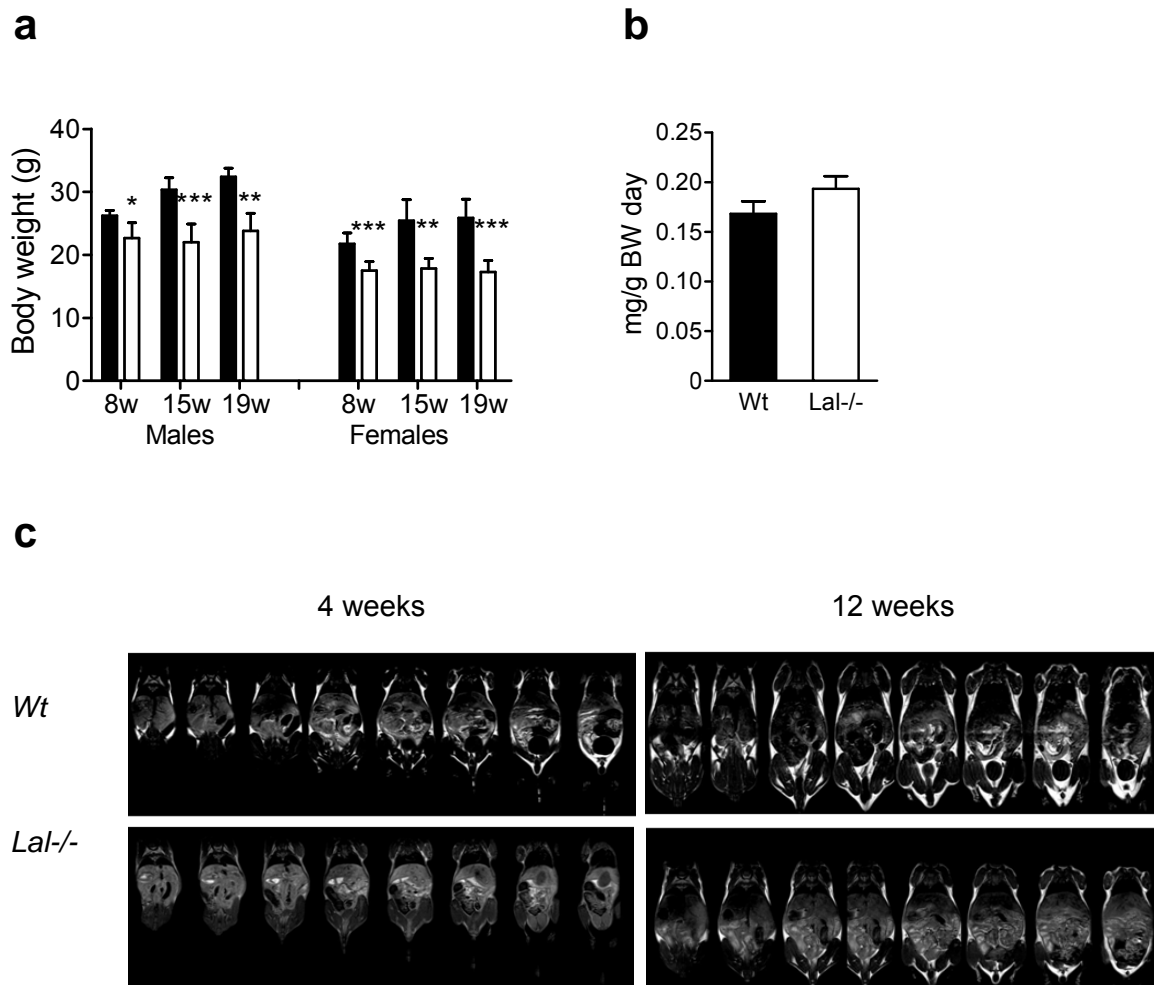


Electronic Supplementary Material

Lysosomal acid lipase regulates VLDL synthesis and insulin sensitivity in mice

by B. Radovic et al.

ESM Figure 3 (relates to Figure 5)



ESM Fig. 3: Decreased body weight and fat mass in *Lal*^{-/-} mice. (a) Body weights of 8, 15, and 19 weeks old *Wt* (black bars; n=3-8) and *Lal*^{-/-} (white bars; n=4-8) mice. (b) Food intake normalized to body weight of 8 weeks old *Wt* (black bar; n=6) and *Lal*^{-/-} (white bar, n=6) mice. Animals were housed individually and had ad libitum access to standard chow diet and water. Data represent mean values + SD. * $p < 0.05$, ** $p \leq 0.01$, *** $p \leq 0.001$. (c) MRI cross-sectional images of 4 week old *Wt* and *Lal*^{-/-} littermate; the same mice were scanned again at the age of 12 weeks. Bright areas represent adipose tissues.