

**Predictors of Hospital Discharge and Mortality in Patients with Diabetes and Covid-19: Updated Results
from the Nationwide CORONADO Study.**

ESM TABLES

ESM Table 1 Upper limit of normal for liver enzymes (AST, ALT, GGT) according to centre and patients' sex.

ESM Table 2 Clinical characteristics prior to admission of CORONADO participants, according to the composite outcome within 7 days

ESM Table 3 Characteristics on admission in CORONADO participants, according to the composite outcome within 7 days

ESM Table 4 Multivariable analysis of the composite outcome within 7 days, complete case population and restricted to CORONADO participants with positive PCR or available admission plasma glucose: covariates prior to and on admission

ESM Table 5 COVID-19-related clinical outcomes within the first 7 and 28 days following hospital admission.

ESM Table 6 Multivariable analysis of discharge and death within 28 days in complete case population, with raw features before transformation

ESM Table 7 Multivariable analysis of discharge within 28 days, complete case population and restricted to CORONADO participants with positive PCR or available admission plasma glucose: covariates prior to and on admission

ESM Table 8 Multivariable analysis of death within 28 days, complete case population and restricted to CORONADO participants with positive PCR or available admission plasma glucose: covariates prior to and on admission

ESM FIGURES

ESM Fig. 1 Flow diagram

ESM Fig. 2a,b Length of stay before discharge according to admission date, in individuals who returned home within 28 days (N = 1404).

ESM TEXT

ESM Text 1 List of the collaborators of the CORONADO study

ESM TABLES

ESM Table 1 Upper limit of normal for liver enzymes (AST, ALT, GGT) according to centre and patients' sex

N°	Centres (opening order)	AST, upper limit of normal (U/l)		ALT, upper limit of normal (U/l)		GGT – upper limit of normal (U/l)	
		Women	Men	Women	Men	Women	Men
1	CHU Nantes	36	51	36	51	42	71
2	CHU Toulouse - Rangueil	35	50	28	40	40	60
3	AP-HP - Lariboisière, Paris	34	34	55	55	36	64
4	AP-HP - Bichat, Paris	37	37	59	63	55	85
5	HCL Sud, Lyon	34	34	55	55	36	36
6	Hôpitaux Universitaires de Strasbourg - Hôpital Civil	34	34	41	59	40	68
7	CHU Nancy	40	40	40	40	38	73
8	CHRU Lille	35	50	35	50	30	50
9	CHU Bordeaux	34	34	55	55	36	64
10	CHU Poitiers	50	50	50	50	36	61
11	CHU Montpellier	32	40	33	41	40	60
12	CHU de Brest	34	34	49	49	38	73
13	CHU Rennes - Pontchaillou	31	35	34	45	38	55
14	CHU Grenoble	40	40	40	40	38	73
15	AP-HP Avicenne-Bondy, Paris	40	40	40	40	60	60
16	CHU Caen	31	35	34	45	38	55
17	CHU Rouen	35	50	35	50	38	55
18	AP-HM - La Conception, Marseille	35	50	35	50	40	60
19	CHU Dijon	37	37	56	61	55	85
20	CHU Angers	34	34	49	49	38	73
21	CHU Nice	50	50	50	50	61	61
22	CHU Reims	35	50	35	50	36	61
23	Centre Hospitalier Sud Francilien, Corbeille-Essonnes	32	40	33	41	40	60
24	Hôpital d'Instruction des armées – Begin, Saint-Mandé	32	40	33	41	40	60
25	Groupe hospitalier Paris St Joseph, Paris	31	35	34	45	36	64
26	CH Cahors	36	59	35	50	43	73
27	CH Cayenne	32	40	33	41	40	60
28	Clinique Ambroise Paré, Neuilly-sur-Seine	34	34	55	55	36	64
29	CH Cholet	32	40	33	41	40	60
30	CHU Amiens	40	40	40	40	38	73
31	CHU Saint-Etienne	50	50	50	50	60	60
32	Hôpital Nord Franche Comté, Trévenans	40	40	40	49	38	73
33	CH Alès	32	41	33	41	36	61
35	CH Pontoise	34	34	55	55	36	64
36	CHU Ile de la Réunion	32	40	55	55	36	64
37	CH Libourne	32	50	35	50	40	60
38	CH Albi	35	50	35	50	60	60
39	CHU Chartres	40	40	40	40	38	73
40	CH Auch		40		41		60
41	AP-HP Cochin, Paris	45	45	35	45	35	55
42	Hôpital Franco-Britannique Levallois-Perret	34	34	55	55	78	78
43	CH Forez	50	50	50	50	60	60
44	CHU Besançon	34	34	55	55	36	64
46	AP-HP Clamart le Kremlin-Bicêtre	35	50	35	50	36	61
47	CH Bretagne Atlantique, Vannes	32	40	35	50	36	61
48	CH Saint-Louis, La Rochelle	34	34	55	55	64	64
49	CH St Joseph St Luc, Lyon	35	50	35	50	40	60
50	CHD La Roche-sur-Yon	35	50	35	50	36	61
51	AP-HP La Pitié Salpêtrière, Paris	27	32	26	35	36	55
55	HCL-Sud, Lyon (nutrition)	34	34	55	55	36	64
56	HCL Bron, Lyon	34	34	55	55	36	64
57	AP-HP Saint Antoine, Paris	32	35	32	43	32	45
58	CH Côte Basque	36	59	35	50	43	73
59	CH Avignon	35	50	34	45	42	71

ESM Table 1 Upper limit of normal for liver enzymes (AST, ALT, GGT) according to centre and patients' sex (continued)

N°	Centres (opening order)	AST, upper limit of normal (U/L)		ALT, upper limit of normal (U/L)		GGT – upper limit of normal (U/L)	
		Women	Men	Women	Men	Women	Men
60	CHU Fort-de-France, Ile de la Martinique	34	34	55	55	36	64
61	CH Aix	34	34	55	55	33	59
63	Hôpital Jacques Monod Le Havre	35	50	35	50	42	71
64	CH Agen	34	34	55	55	36	64
66	CH Le Mans	35	50	35	50	40	60
67	CH Gonesse	37	37	61	61	85	85
68	CHU Nîmes	35	50	35	50	71	71
69	CHU Guadeloupe	32	40	34	42	42	71
71	Hôpital St Vincent de Paul, Lille	37	37	56	61	50	50
72	CH Périgueux	36	59	33	45	43	73
73	CH Bastia	N/A	34	N/A	55	N/A	64
74	Groupe Hospitalier Mutualiste Les Portes du Sud, Vénissieux	35	50	35	50	40	60
75	Hôpital de Villeurbanne	34	34	55	55	36	64
76	CH Ajaccio	35	50	33	50	36	64

Eight centres were candidates for the CORONADO study but did not include patients, which explain that 76 centres were selected but only 68 were recruiters and are presented here.

An empty box indicates that no patient of this sex was recruited in the centre, making the information irrelevant.

AST, aspartate aminotransferase; ALT, alanine aminotransferase; GGT, gamma-glutamyl transferase; AP-HM: *Assistance Publique Hôpitaux de Marseille* (Marseille's Public Hospitals); AP-HP: *Assistance Publique Hôpitaux de Paris* (Paris' Public Hospitals); CH: *Centre Hospitalier* (Hospital Centre); CHU: *Centre Hospitalier Universitaire* (University Hospital Centre); HCL: *Hospices Civils de Lyon* (Lyon's Public Hospitals); N/A: not available, applied when the centre did not communicate the upper limit of normal

ESM Table 6 Clinical characteristics prior to admission of CORONADO participants according to the composite outcome (tracheal intubation for mechanical ventilation and/or death) within 7 days

Clinical features	Available data	Composite outcome within 7 days				Age-adjusted OR (95% CI)	Age-adjusted <i>p</i> value
		All (N = 2796)	No (N=1996)	Yes (N=800)			
Sex (female/male)	2796	1014/2796 (36.3)	776/1996 (38.9)	238/800 (29.8)	0.67 (0.56, 0.79)	<0.001	
Age (years)	2796	69.7 ± 13.2	69.7 ± 13.4	69.6 ± 12.5	1.00 (0.99, 1.01)	0.86	
Age class (years)	2796					0.20	
< 55		367/2796 (13.1)	263/1996 (13.2)	104/800 (13.0)	1		
55-64		565/2796 (20.2)	410/1996 (20.5)	155/800 (19.4)	0.96 (0.71, 1.28)	0.76	
65-74		797/2796 (28.5)	546/1996 (27.4)	251/800 (31.4)	1.16 (0.89, 1.53)	0.28	
≥75		1067/2796 (38.2)	777/1996 (38.9)	290/800 (36.2)	0.94 (0.72, 1.23)	0.67	
Ethnicity	2384					0.19	
EU		1385/2384 (58.1)	996/1715 (58.1)	389/669 (58.1)	1		
MENA		497/2384 (20.8)	366/1715 (21.3)	131/669 (19.6)	0.92 (0.73, 1.17)	0.50	
AC		415/2384 (17.4)	299/1715 (17.4)	116/669 (17.3)	1.01 (0.78, 1.31)	0.94	
AS		87/2384 (3.6)	54/1715 (3.1)	33/669 (4.9)	1.59 (1.01, 2.50)	0.046	
BMI (kg/m²)	2460	28.4 (25; 32.4)	28.1 (24.8; 32.1)	29.1 (26; 33.5)	1.21 (1.10, 1.32)	<0.001	
BMI class	2460					0.005	
< 25 kg/m ²		611/2460 (24.8)	471/1759 (26.8)	140/701 (20)	1		
25-29.9 kg/m ²		890/2460 (36.2)	633/1759 (36)	257/701 (36.7)	1.35 (1.07, 1.72)	0.013	
30-39.9 kg/m ²		823/2460 (33.5)	562/1759 (31.9)	261/701 (37.2)	1.53 (1.20, 1.95)	0.001	
≥40 kg/m ²		136/2460 (5.5)	93/1759 (5.3)	43/701 (6.1)	1.51 (1.00, 2.27)	0.051	
Diabetes duration (years)	1767	11 (5; 20)	11 (5; 20)	11 (4; 20)	0.96 (0.86, 1.07)	0.49	
HbA_{1c} (mmol/mol)^a	1800	60.7 (50.8; 74.9)	60.7 (50.8; 74.9)	59.6 (50.8; 73.2)	0.94 (0.84, 1.05)	0.28	
HbA_{1c} (%)^a	1800	7.7 (6.8; 9.0)	7.7 (6.8; 9.0)	7.6 (6.8; 8.9)	0.94 (0.84, 1.05)	0.28	
Hypertension	2769	2126/2769 (76.8)	1494/1976 (75.6)	632/793 (79.7)	1.29 (1.05, 1.59)	0.015	
Dyslipidemia	2710	1267/2710 (46.8)	890/1941 (45.9)	377/769 (49)	1.14 (0.96, 1.35)	0.13	
Current tobacco use	2288	131/2288 (5.7)	96/1659 (5.8)	35/629 (5.6)	0.95 (0.64, 1.42)	0.82	
Long-term diabetes complications							
Microvascular complications ^b	1966	869/1966 (44.2)	626/1457 (43)	243/509 (47.7)	1.22 (0.99, 1.52)	0.068	
Macrovascular complications ^c	2627	1014/2627 (38.6)	721/1889 (38.2)	293/738 (39.7)	1.07 (0.90, 1.29)	0.44	

ESM Table 2 Clinical characteristics prior to admission of CORONADO participants according to the composite outcome (tracheal intubation for mechanical ventilation and/or death) within 7 days (continued)

Clinical features	Available data	Primary outcome within 7 days				Age-adjusted OR (95% CI)	Age-adjusted <i>p</i> value
		All (N = 2796)	No (N=1996)	Yes (N=800)			
Comorbidities							
Heart failure	2651	302/2651 (11.4)	223/1904 (11.7)	79/747 (10.6)	0.89 (0.67, 1.17)	0.41	
NAFLD or liver cirrhosis	2640	218/2640 (8.3)	153/1897 (8.1)	65/743 (8.7)	1.09 (0.81, 1.48)	0.57	
Active Cancer	2742	253/2742 (9.2)	184/1962 (9.4)	69/780 (8.8)	0.94 (0.70, 1.26)	0.68	
COPD	2732	263/2732 (9.6)	183/1956 (9.4)	80/776 (10.3)	1.12 (0.85, 1.48)	0.42	
Treated OSA	2593	273/2593 (10.5)	180/1864 (9.7)	93/729 (12.8)	1.37 (1.05, 1.79)	0.021	
Routine treatment before admission							
Metformin	2794	1553/2794 (55.6)	1119/1994 (56.1)	434/800 (54.2)	0.92 (0.78, 1.09)	0.35	
Sulfonylurea/glinides	2794	782/2794 (28.0)	547/1994 (27.4)	235/800 (29.4)	1.10 (0.92, 1.32)	0.30	
DPP4-inhibitors	2794	615/2794 (22.0)	446/1994 (22.4)	169/800 (21.1)	0.93 (0.76, 1.14)	0.48	
GLP1-RA	2794	254/2794 (9.1)	178/1994 (8.9)	76/800 (9.5)	1.07 (0.80, 1.42)	0.65	
Insulin	2796	1039/2796 (37.2)	754/1996 (37.8)	285/800 (35.6)	0.91 (0.77, 1.08)	0.29	
Diuretics ^d	2794	1058/2794 (37.9)	745/1994 (37.4)	313/800 (39.1)	1.09 (0.91, 1.29)	0.35	
β-Blockers	2794	988/2794 (35.4)	697/1994 (35.0)	291/800 (36.4)	1.07 (0.90, 1.27)	0.45	
CCB	2794	924/2794 (33.1)	619/1994 (31.0)	305/800 (38.1)	1.37 (1.16, 1.63)	<0.001	
ARBs and/or ACE inhibitors and/or MRA ^c	2794	1570/2794 (56.2)	1108/1994 (55.6)	462/800 (57.8)	1.10 (0.93, 1.30)	0.28	
Statins	2794	1282/2794 (45.9)	899/1994 (45.1)	383/800 (47.9)	1.12 (0.95, 1.32)	0.17	
Anti-platelet therapy	2794	1125/2794 (40.3)	793/1994 (39.8)	332/800 (41.5)	1.08 (0.91, 1.28)	0.37	
Anticoagulation therapy	2794	501/2794 (17.9)	382/1994 (19.2)	119/800 (14.9)	0.73 (0.58, 0.92)	0.007	

Population size was *N*=2796. Data shown are number (%), and mean ± SD or median (25th–75th percentile) if not normally distributed

p values are calculated using Wald test (unadjusted and age-adjusted logistic regression, except for ‘age’ and ‘age class’, which were not adjusted). ORs correspond to an increase of 1 SD after natural-log transformation and standardisation for BMI, diabetes duration and HbA_{1c}

^aHbA_{1c} determined in the 6 months prior to or in the first 7 days following hospital admission

^bMicrovascular complication was defined as history of one or more of the following: diabetic kidney disease and/or severe diabetic retinopathy and/or diabetic foot ulcer

^cMacrovascular complication was defined as history of one or more of the following comorbidities: ischemic heart disease (acute coronary syndrome and/or coronary artery disease revascularisation) and/or cerebrovascular disease (stroke and/or transient ischaemic attack) and/or peripheral heart disease (amputation owing to ischemic disease and/or lower limb artery revascularisation)

^dDiuretics stands here for loop diuretics, thiazide diuretics, and potassium-sparing diuretics

*MRAs include spironolactone and eplerenone

Abbreviations: EU, European; MENA, Middle East North Africa; AC, African or Caribbean; AS, Asian; NAFLD, non-alcoholic fatty liver disease; GLP-1RA, glucagon-like peptide 1-receptor agonist

ESM Table 3 Characteristics on admission of CORONADO participants according to the composite outcome (tracheal intubation for mechanical ventilation and/or death) within 7 days

Variable	Available data	Composite outcome within 7 days				Age-adjusted <i>p</i> value
		All (N = 2796)	No (N=1996)	Yes (N=800)	Age-adjusted OR (95% CI)	
Time from symptom onset to hospital admission (days)	2743	5 (2-9)	5 (2-9)	6 (3-8)	0.99 (0.98, 1.01)	0.42
Clinical presentation						
Fever	2755	2077/2755 (75.4)	1455/1976 (73.6)	622/779 (79.8)	1.42 (1.16, 1.75)	0.001
Dyspnoea	2754	1771/2754 (64.3)	1138/1972 (57.7)	633/782 (80.9)	3.12 (2.55, 3.80)	<0.001
Abnormal chest CT scan	1982	1919/1982 (96.8)	1395/1449 (96.3)	524/533 (98.3)	2.29 (1.12, 4.67)	0.023
Biological findings						
Positive SARS-CoV-2 PCR	2705	2547/2705 (94.2)	1795/1934 (92.8)	752/771 (97.5)	3.06 (1.88, 4.98)	<0.001
Admission plasma glucose (mmol/l)	1551	9.5 (7.0-13.5)	9.0 (6.9-12.8)	10.5 (7.5-14.9)	1.25 (1.12, 1.39)	<0.001
Plasma creatinine (µmol/l)	2602	91 (69-133)	88 (67-125)	104 (76-155)	1.33 (1.23, 1.45)	<0.001
eGFR (ml min ⁻¹ [1.73 m ²] ^a)	2602	68.5 (41.8-89.7)	72.4 (44.7-91.0)	58.7 (34.8-86.0)	0.77 (0.71, 0.84)	<0.001
ALT (%ULN)	2478	0.62 (0.42; 1.00)	0.58 (0.40; 0.94)	0.73 (0.48; 1.11)	1.33 (1.22, 1.45)	<0.001
AST (%ULN)	2444	1.06 (0.75; 1.60)	0.98 (0.69; 1.40)	1.38 (0.94; 2.16)	1.74 (1.58, 1.92)	<0.001
GGT (%ULN)	2317	0.95 (0.55; 1.77)	0.91 (0.53; 1.62)	1.10 (0.65; 2.00)	1.21 (1.10, 1.31)	<0.001
Hemoglobin (g/l)	2728	127 (114-142)	127 (114-142)	128 (113-143)	0.99 (0.91, 1.08)	0.84
White cell count (10 ³ /mm ³)	2726	6580 (5000-8818)	6410 (4900-8500)	7050 (5380-9960)	1.36 (1.25, 1.48)	<0.001
Lymphocyte count (10 ³ /mm ³)	2646	990 (690-1400)	1040 (720-1470)	860 (600-1200)	0.72 (0.65, 0.80)	<0.001
Platelet count (10 ³ /mm ³)	2725	201 (156-260)	206 (162-265)	188 (145-241)	0.81 (0.75, 0.88)	<0.001
CRP (mg/l)	2612	86.0 (40.3-148.0)	71.4 (31.7-126.0)	123.0 (72.7-195.9)	2.22 (1.97, 2.50)	<0.001
LDH (U/l)	1427	351 (266-498)	322 (248-428)	456 (332-626)	2.63 (2.17, 3.18)	<0.001
CPK (U/l)	1385	132 (67-305)	112 (61-233)	212 (90-506)	1.63 (1.45, 1.83)	<0.001
Fibrinogen (g/l)	1424	6.3 (5.0-7.4)	6.1 (4.8-7.2)	6.6 (5.3-7.8)	1.24 (1.10, 1.40)	0.001

Population size was *N*=2796. Data shown are *n* (%) and or median (25th–75th percentile)

p values are calculated using Wald test (unadjusted and age-adjusted logistic regression). Quantitative variables were natural-log transformed and associated ORs correspond to an increase of 1 SD after standardisation, except for time from symptoms onset to hospital admission (1 day increase)

^aeGFR determined by the CKD-EPI formula

Abbreviations: ALT, alanine aminotransferase; ULN, upper limit of normal; GGT, γ -glutamyl transferase; LDH, lactate dehydrogenase; CPK, creatine phosphokinase

ESM Table 4 Multivariable analysis of the composite outcome within 7 days – full model

Variable	Complete case population (337/1355 events, 24.9%)		Complete case population with positive PCR (321/1249 events, 25.7%)		Complete case population with RPG (112/761 events, 25.2%)	
	OR (95% CI)	P value	OR (95% CI)	P value	OR (95% CI)	P value
Sex (female/male)	0.78 (0.57, 1.06)	0.11	0.81 (0.58, 1.11)	0.19	0.75 (0.49, 1.15)	0.18
Age (+1 SD)	0.85 (0.72, 1.01)	0.057	0.85 (0.71, 1.01)	0.060	0.88 (0.69, 1.11)	0.28
BMI (+1 SD)	1.15 (0.98, 1.34)	0.077	1.17 (0.99, 1.37)	0.066	1.14 (0.92, 1.41)	0.24
Hypertension	1.31 (0.88, 1.95)	0.19	1.19 (0.79, 1.80)	0.40	1.00 (0.59, 1.68)	0.99
Microvascular complications	1.11 (0.76, 1.64)	0.58	1.16 (0.77, 1.74)	0.47	1.12 (0.67, 1.88)	0.66
Macrovascular complications	0.93 (0.67, 1.29)	0.66	0.92 (0.66, 1.30)	0.65	0.99 (0.63, 1.56)	0.97
COPD	0.89 (0.56, 1.42)	0.63	0.96 (0.60, 1.55)	0.88	1.30 (0.69, 2.45)	0.41
Treated OSA	1.06 (0.68, 1.66)	0.81	1.24 (0.78, 1.98)	0.36	0.69 (0.35, 1.38)	0.30
Metformin	0.70 (0.52, 0.94)	0.018	0.71 (0.52, 0.97)	0.033	0.62 (0.42, 0.93)	0.022
Insulin	0.90 (0.66, 1.22)	0.50	0.92 (0.67, 1.28)	0.64	0.71 (0.46, 1.09)	0.12
ARBs and/or ACE inhibitors and/or MRA	0.99 (0.72, 1.37)	0.96	1.02 (0.73, 1.43)	0.89	1.11 (0.71, 1.74)	0.64
Statins	1.54 (1.14, 2.07)	0.005	1.67 (1.22, 2.29)	0.0013	1.44 (0.96, 2.16)	0.082
Anticoagulation therapy	0.89 (0.61, 1.32)	0.58	0.87 (0.58, 1.30)	0.49	0.80 (0.45, 1.41)	0.44
Time from symptom onset to hospital admission (+1 SD)	0.90 (0.75, 1.09)	0.28	0.92 (0.76, 1.13)	0.43	0.79 (0.61, 1.03)	0.079
Dyspnoea	2.40 (1.74, 3.31)	<0.001	2.43 (1.74, 3.41)	<0.001	3.01 (1.91, 4.75)	<0.001
eGFR (+1 SD) ^a	0.93 (0.77, 1.11)	0.41	0.95 (0.79, 1.15)	0.60	0.92 (0.72, 1.19)	0.55
AST (% ULN) (+1 SD)	1.39 (1.20, 1.61)	<0.001	1.43 (1.22, 1.67)	<0.001	1.44 (1.17, 1.76)	<0.001
White cell count (+1 SD)	1.17 (1.00, 1.37)	0.050	1.12 (0.95, 1.32)	0.19	1.00 (0.80, 1.24)	0.97
Platelet (+1 SD)	0.72 (0.62, 0.84)	<0.001	0.70 (0.60, 0.82)	<0.001	0.75 (0.61, 0.94)	0.011
CRP (+1 SD)	2.26 (1.85, 2.77)	<0.001	2.48 (1.99, 3.08)	<0.001	2.26 (1.72, 2.98)	<0.001
Admission plasma glucose (+1 SD)					1.46 (1.20, 1.77)	<0.001

Microvascular complication was defined as history of one or more of the following: diabetic kidney disease and/or severe diabetic retinopathy and/or history of diabetic foot ulcer. Macrovascular complication was defined as history of one or more of the following comorbidities: ischemic heart disease (acute coronary syndrome and/or coronary artery disease revascularisation) and/or cerebrovascular disease (stroke and/or transient ischaemic attack) and/or peripheral heart disease (amputation owing to ischemic disease and/or lower limb artery revascularisation)

^aeGFR determined by the CKD-EPI formula

Abbreviations: COPD, Chronic Obstructive Pulmonary Disease; OSA, Obstructive sleep apnea; ARB, angiotensin-2 receptor blocker; ULN, upper limit of normal.

ESM Table 5 COVID-19-related clinical outcomes within the first 7 and 28 days following hospital admission

	CORONADO population, N = 2796		
	Within 7 days	Between day 8 and day 28	Within 28 days
Primary outcome: number (% , 95% CI)	800 (28.6%, 26.9-30.3)	179 (6.4%, 5.5-7.4)	979 (35.0%, 33.2-36.8)
Death: number (% , 95% CI)	312 (11.2%, 10.0-12.4)	265 (9.5%, 8.4-10.6)	577 (20.6%, 19.2-22.2)
Tracheal intubation: number (% , 95% CI)	532 (19.0%, 17.6-20.5)	24 (0.9%, 0.6-1.3)	556 (19.9%, 18.4-21.4)
Admission to ICU: number (% , 95% CI)	798 (28.5%, 26.9-30.3)	25 (0.9%, 0.6-1.3)	823 (29.4%, 27.7-31.2)
All discharges: number (% , 95% CI)	704 (25.2%, 23.6-26.8)	1173 (42.0%, 40.1-43.8)	1877 (67.1%, 65.3-68.9)
Home discharge (home or previous long-term care facility): number (% , 95% CI)	574 (20.5%, 19.0-22.1)	830 (29.7%, 28.0-31.4)	1404 (50.2%, 48.3-52.1)
Transfer – other hospital and/or rehabilitation care (% , 95% CI)	130 (4.6%, 3.9-5.5)	343 (12.3%, 11.1-13.5)	473 (16.9%, 15.5-18.4)

Population size was N= 2796. Data shown are *n* (%), and 95% CI of proportions are calculated using the Clopper-Pearson estimate.

A patient who presented successively tracheal intubation and death was counted only once for the primary outcome, which explain the greater number of death than primary outcome between day 8 and 28.

ESM Table 6 Multivariable analysis of discharge and death within 28 days in complete case population, with raw features before transformation

Variable	Overall population, N = 2796		Population analyzed in multivariable regression, N = 1355				
	Data available	<i>n</i> (%) or mean ± SD	N (%) or mean ± SD	Discharge within 28 days (728/1355 events, 53.7%)		Death within 28 days (225/1355 events, 16.6%)	
				OR (95% CI)	<i>P</i> value	OR (95% CI)	<i>P</i> value
Sex (female/male)	2796	1014 (36.3)	503 (37.1)	1.16 (0.90, 1.50)	0.26	0.86 (0.60, 1.22)	0.40
Age (years) (+5)	2796	69.7 ± 13.2	68.9 ± 13.2	0.87 (0.82, 0.92)	<0.001	1.23 (1.14, 1.33)	<0.001
BMI (kg/m ²) (+1)	2460	29.2 ± 6.0	29.2 ± 5.8	1.00 (0.98, 1.02)	0.88	1.01 (0.98, 1.04)	0.56
Hypertension	2769	2126 (76.8)	1042 (76.9)	0.91 (0.65, 1.27)	0.58	0.75 (0.46, 1.23)	0.26
Microvascular complications	1966	869 (44.2)	577 (42.6)	0.76 (0.55, 1.05)	0.094	1.92 (1.21, 3.05)	0.006
Macrovascular complications	2627	1014 (38.6)	518 (38.2)	0.98 (0.75, 1.29)	0.88	1.07 (0.75, 1.52)	0.70
COPD	2732	263 (9.6)	137 (10.1)	1.00 (0.67, 1.50)	0.98	1.03 (0.64, 1.67)	0.90
Treated OSA	2593	273 (10.5)	148 (10.9)	1.27 (0.85, 1.88)	0.24	0.91 (0.55, 1.53)	0.73
Metformin	2794	1553 (55.6)	737 (54.4)	1.31 (1.02, 1.68)	0.035	0.69 (0.48, 0.98)	0.038
Insulin	2796	1039 (37.2)	570 (42.1)	0.82 (0.64, 1.07)	0.14	1.34 (0.95, 1.91)	0.010
ARBs and/or ACE inhibitors and/or MRA	2794	1570 (56.2)	775 (57.2)	1.11 (0.84, 1.45)	0.47	0.94 (0.66, 1.34)	0.72
Statins	2794	1282 (45.9)	657 (48.5)	0.82 (0.64, 1.06)	0.13	1.48 (1.05, 2.09)	0.027
Anticoagulation therapy	2794	501 (17.9)	247 (18.2)	0.64 (0.46, 0.88)	0.006	1.10 (0.75, 1.62)	0.62

ESM Table 6 Multivariable analysis of discharge and death within 28 days in complete case population, with raw features before transformation (continued)

Variable	Overall population, N = 2796		Population analyzed in multivariable regression, N = 1355				
	data available	n (%) or mean ± SD	n (%) or mean ± SD	Discharge within 28 days (728/1355 events, 53.7%)		Death within 28 days (225/1355 events, 16.6%)	
				OR (95% CI)	P value	OR (95% CI)	P value
Time from symptom onset to hospital admission (day) (+1)	2743	6.0 ± 5.4	6.1 ± 5.2	1.02 (1.00, 1.05)	0.040	0.96 (0.92, 0.99)	0.011
Dyspnoea	2754	1771 (64.3)	864 (63.8)	0.67 (0.52, 0.85)	0.001	2.07 (1.44, 2.96)	<0.001
eGFR (ml min ⁻¹ [1.73 m] ⁻²) ^a (+5)	2602	66.1 ± 30.7	66.9 ± 30.6	1.02 (0.99, 1.05)	0.12	0.95 (0.91, 0.99)	0.015
AST (% ULN) (+100%)	2444	1.53 ± 3.24	1.38 ± 1.63	0.81 (0.72, 0.92)	0.001	1.13 (1.03, 1.23)	0.011
White cell count (10 ³ /mm ³) (+1000)	2726	7575 ± 5299	7405 ± 5751	0.95 (0.92, 0.99)	0.006	1.04 (1.01, 1.07)	0.006
Platelet (10 ³ /mm ³) (+10)	2725	217 ± 91	217 ± 91	1.01 (0.99, 1.04)	0.30	0.98 (0.95, 1.02)	0.36
CRP (mg/L) (+10)	2612	112 ± 147	109 ± 159	0.98 (0.96, 1.00)	0.057	1.02 (1.00, 1.03)	0.058

Models were applied to 1355 participants yielding 728 discharges (53.7%) and 225 deaths within 28 days (16.6%).

Microvascular complication was defined as history of one or more of the following: diabetic kidney disease and/or severe diabetic retinopathy and/or history of diabetic foot ulcer. Macrovascular complication was defined as history of one or more of the following comorbidities: ischemic heart disease (acute coronary syndrome and/or coronary artery disease revascularisation) and/or cerebrovascular disease (stroke and/or transient ischaemic attack) and/or peripheral heart disease (amputation owing to ischemic disease and/or lower limb artery revascularisation)

^aeGFR determined by the CKD-EPI formula

Abbreviations: COPD, Chronic Obstructive Pulmonary Disease; OSA, Obstructive sleep apnea; ARB, angiotensin-2 receptor blocker; ULN, upper limit of normal.

ESM Table 7 Multivariable analysis of discharge within 28 days, complete case population and restricted to CORONADO participants with positive PCR or available admission plasma glucose: covariates prior to and on admission

Variable	Complete case population (728/1355 events, 53.7%)		Complete case population with positive PCR (666/1249 events, 53.3%)		Complete case population with RPG (429/761 events, 56.4%)	
	OR (95% CI)	P value	OR (95% CI)	P value	OR (95% CI)	P value
Sex (female/male)	1.06 (0.82, 1.38)	0.65	1.13 (0.86, 1.48)	0.37	1.22 (0.86, 1.74)	0.26
Age (+1 SD)	0.67 (0.58, 0.77)	<0.001	0.62 (0.54, 0.72)	<0.001	0.67 (0.55, 0.82)	<0.001
BMI (+1 SD)	1.01 (0.88, 1.16)	0.89	0.98 (0.85, 1.13)	0.77	1.00 (0.83, 1.21)	0.98
Hypertension	0.88 (0.63, 1.24)	0.47	0.88 (0.62, 1.25)	0.47	0.93 (0.60, 1.46)	0.76
Microvascular complications	0.70 (0.51, 0.97)	0.031	0.66 (0.47, 0.92)	0.014	0.79 (0.52, 1.21)	0.28
Macrovascular complications	0.92 (0.70, 1.22)	0.58	0.92 (0.69, 1.23)	0.59	0.86 (0.59, 1.26)	0.44
COPD	1.02 (0.68, 1.53)	0.93	1.00 (0.65, 1.52)	0.99	0.93 (0.53, 1.62)	0.79
Treated OSA	1.23 (0.82, 1.83)	0.32	1.02 (0.67, 1.55)	0.93	1.52 (0.84, 2.74)	0.16
Metformin	1.40 (1.08, 1.81)	0.011	1.44 (1.10, 1.88)	0.008	1.42 (1.00, 2.01)	0.047
Insulin	0.80 (0.62, 1.04)	0.091	0.76 (0.58, 1.00)	0.053	0.84 (0.59, 1.19)	0.33
ARBs and/or ACE inhibitors and/or MRA	1.09 (0.83, 1.44)	0.52	1.03 (0.77, 1.38)	0.84	1.01 (0.69, 1.48)	0.95
Statins	0.83 (0.65, 1.07)	0.16	0.87 (0.66, 1.13)	0.29	0.83 (0.59, 1.18)	0.30
Anticoagulation therapy	0.62 (0.45, 0.85)	0.003	0.63 (0.45, 0.88)	0.006	0.52 (0.33, 0.82)	0.005
Time from symptom onset to hospital admission (+1 SD)	1.26 (1.08, 1.47)	0.003	1.27 (1.07, 1.49)	0.005	1.20 (0.98, 1.47)	0.071
Dyspnoea	0.71 (0.55, 0.91)	0.008	0.70 (0.54, 0.91)	0.009	0.62 (0.44, 0.89)	0.008
eGFR (+1 SD) ^a	1.05 (0.89, 1.22)	0.57	0.98 (0.83, 1.15)	0.78	1.07 (0.86, 1.33)	0.53
AST (% ULN) (+1 SD)	0.72 (0.63, 0.84)	<0.001	0.73 (0.63, 0.85)	<0.001	0.70 (0.57, 0.85)	<0.001
White cell count (+1 SD)	0.83 (0.73, 0.95)	0.008	0.83 (0.72, 0.96)	0.013	0.83 (0.68, 1.01)	0.062
Platelet (+1 SD)	1.07 (0.94, 1.22)	0.29	1.07 (0.94, 1.23)	0.31	1.01 (0.83, 1.22)	0.94
CRP (+1 SD)	0.75 (0.66, 0.86)	<0.001	0.76 (0.66, 0.88)	<0.001	0.74 (0.62, 0.90)	0.002
Admission plasma glucose (+1 SD)					0.82 (0.69, 0.98)	0.028

Microvascular complication was defined as history of one or more of the following: diabetic kidney disease and/or severe diabetic retinopathy and/or history of diabetic foot ulcer. Macrovascular complication was defined as history of one or more of the following comorbidities: ischemic heart disease (acute coronary syndrome and/or coronary artery disease revascularisation) and/or cerebrovascular disease (stroke and/or transient ischaemic attack) and/or peripheral heart disease (amputation owing to ischemic disease and/or lower limb artery revascularisation)

^aeGFR determined by the CKD-EPI formula

Abbreviations: COPD, Chronic Obstructive Pulmonary Disease; OSA, Obstructive sleep apnea; ARB, angiotensin-2 receptor blocker; ULN, upper limit of normal.

ESM Table 8 Multivariable analysis of death within 28 days, complete case population and restricted to CORONADO participants with positive PCR or available admission plasma glucose: covariates prior to and on admission

Variable	Complete case population (225/1355 events, 16.6%)		Complete case population with positive PCR (209/1249 events, 16.7%)		Complete case population with RPG (112/761 events, 14.7%)	
	OR (95% CI)	P value	OR (95% CI)	P value	OR (95% CI)	P value
Sex (female/male)	1.01 (0.70, 1.45)	0.96	0.92 (0.63, 1.34)	0.65	0.79 (0.46, 1.36)	0.40
Age (+1 SD)	1.84 (1.49, 2.27)	<0.001	1.86 (1.49, 2.32)	<0.001	2.16 (1.55, 3.02)	<0.001
BMI (+1 SD)	1.03 (0.86, 1.25)	0.72	1.04 (0.86, 1.27)	0.67	1.21 (0.92, 1.59)	0.17
Hypertension	0.84 (0.51, 1.39)	0.50	0.74 (0.45, 1.23)	0.25	0.69 (0.34, 1.39)	0.30
Microvascular complications	2.11 (1.35, 3.27)	<0.001	2.23 (1.40, 3.54)	<0.001	1.78 (0.95, 3.35)	0.072
Macrovascular complications	1.15 (0.80, 1.66)	0.43	1.23 (0.85, 1.80)	0.27	1.21 (0.71, 2.06)	0.47
COPD	1.03 (0.63, 1.68)	0.91	1.08 (0.65, 1.79)	0.78	1.70 (0.83, 3.47)	0.14
Treated OSA	1.01 (0.60, 1.70)	0.97	1.18 (0.69, 2.01)	0.55	0.47 (0.19, 1.20)	0.11
Metformin	0.65 (0.45, 0.93)	0.020	0.62 (0.42, 0.90)	0.013	0.66 (0.39, 1.11)	0.12
Insulin	1.44 (1.01, 2.06)	0.046	1.35 (0.92, 1.97)	0.12	1.20 (0.71, 2.04)	0.50
ARBs and/or ACE inhibitors and/or MRA	0.92 (0.64, 1.32)	0.64	0.91 (0.62, 1.33)	0.62	0.98 (0.57, 1.68)	0.92
Statins	1.42 (1.00, 2.02)	0.053	1.41 (0.97, 2.04)	0.071	1.80 (1.07, 3.04)	0.026
Anticoagulation therapy	1.21 (0.81, 1.79)	0.35	1.23 (0.82, 1.86)	0.31	1.46 (0.81, 2.65)	0.21
Time from symptom onset to hospital admission (+1 SD)	0.72 (0.57, 0.90)	0.004	0.72 (0.56, 0.91)	0.008	0.79 (0.58, 1.06)	0.12
Dyspnoea	1.89 (1.31, 2.73)	<0.001	1.97 (1.33, 2.90)	<0.001	2.02 (1.16, 3.53)	0.013
eGFR (+1 SD) ^a	0.85 (0.70, 1.03)	0.093	0.88 (0.72, 1.07)	0.21	0.77 (0.57, 1.02)	0.071
AST (% ULN) (+1 SD)	1.47 (1.25, 1.74)	<0.001	1.48 (1.24, 1.77)	<0.001	1.67 (1.32, 2.13)	<0.001
White cell count (+1 SD)	1.30 (1.10, 1.54)	0.003	1.30 (1.08, 1.56)	0.006	1.46 (1.13, 1.88)	0.004
Platelet (+1 SD)	0.84 (0.71, 1.00)	0.047	0.81 (0.68, 0.97)	0.022	0.96 (0.73, 1.26)	0.75
CRP (+1 SD)	1.48 (1.21, 1.80)	<0.001	1.50 (1.21, 1.85)	<0.001	1.63 (1.22, 2.18)	0.001
Admission plasma glucose (+1 SD)					1.44 (1.12, 1.84)	0.0045

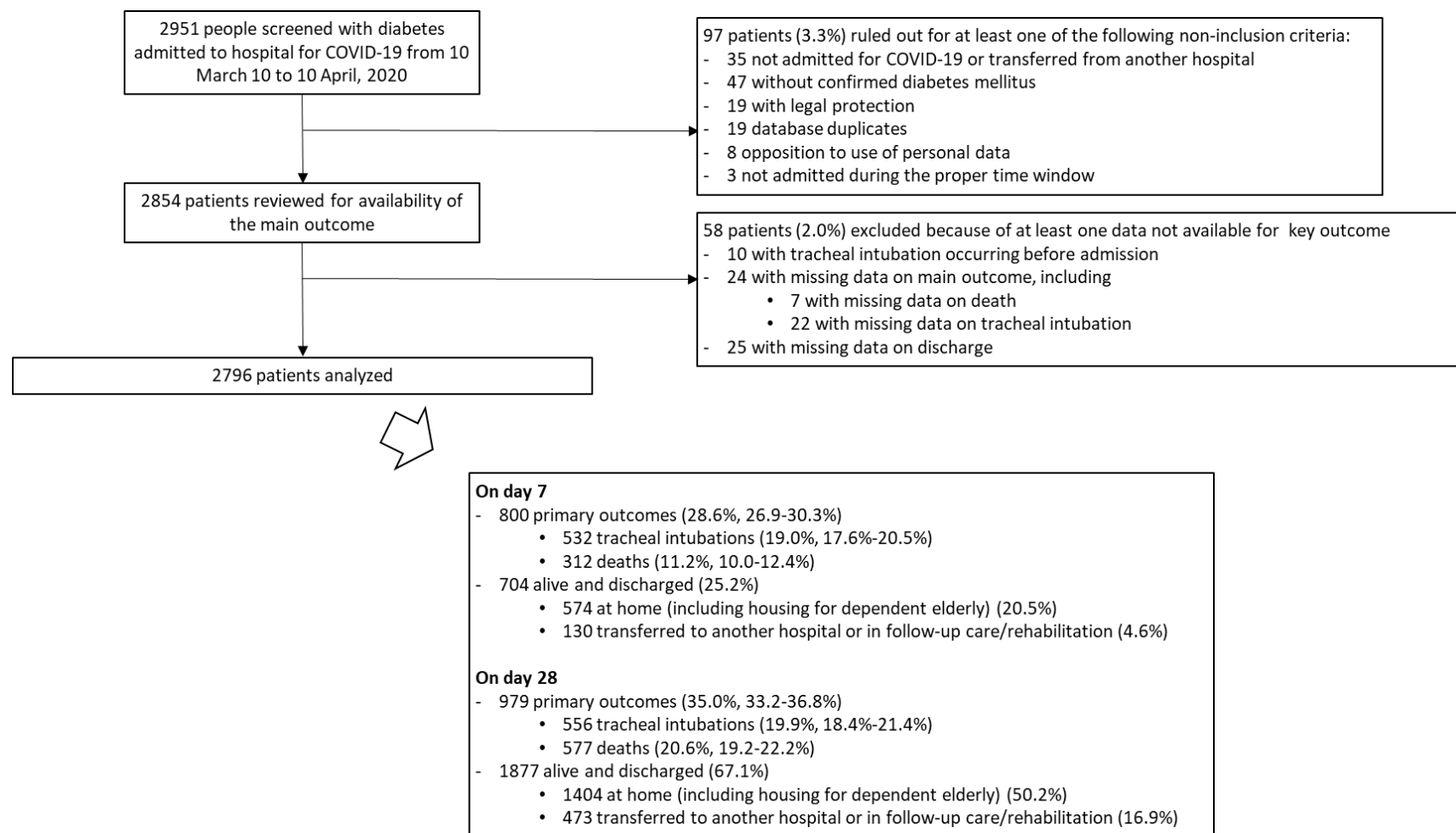
Microvascular complication was defined as history of one or more of the following: diabetic kidney disease and/or severe diabetic retinopathy and/or history of diabetic foot ulcer. Macrovascular complication was defined as history of one or more of the following comorbidities: ischemic heart disease (acute coronary syndrome and/or coronary artery disease revascularisation) and/or cerebrovascular disease (stroke and/or transient ischaemic attack) and/or peripheral heart disease (amputation owing to ischemic disease and/or lower limb artery revascularisation)

^aeGFR determined by the CKD-EPI formula

Abbreviations: COPD, Chronic Obstructive Pulmonary Disease; OSA, Obstructive sleep apnea; ARB, angiotensin-2 receptor blocker; ULN, upper limit of normal.

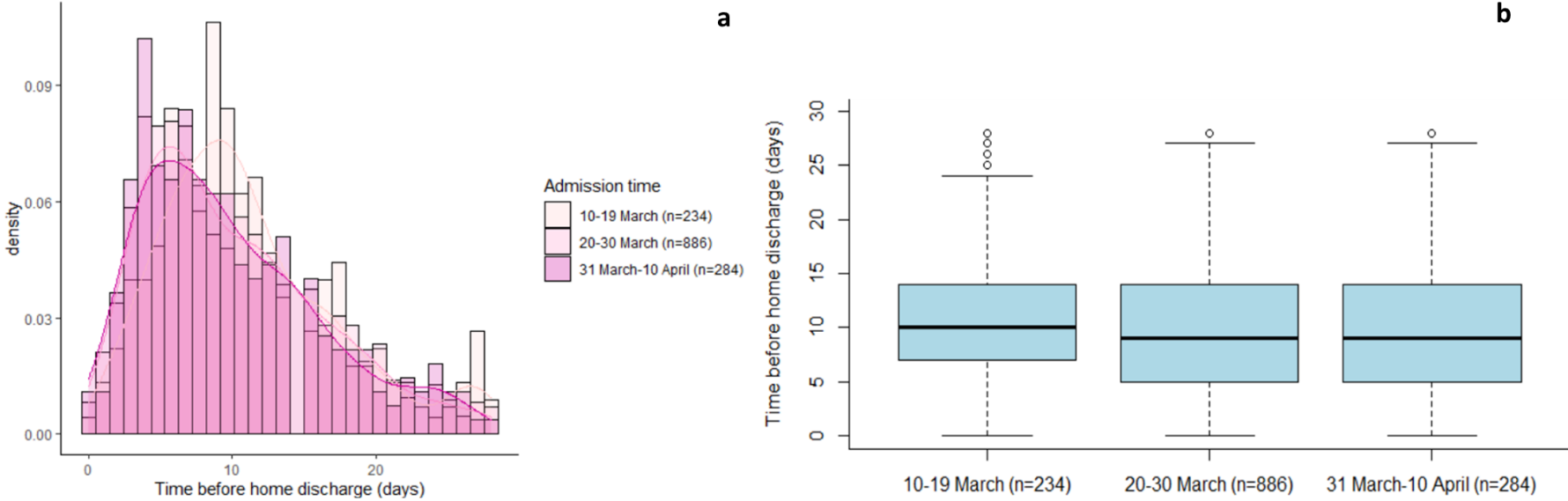
ESM FIGURES

ESM Fig. 1 Flow diagram



For proportions, 95% CI are calculated using the Clopper-Pearson estimate

ESM Fig. 2a,b Time before discharge according to admission date, in individuals who went back home within 28 days



Population size was N=1404. (a) Frequency distribution of individuals according to time before discharge and 3 periods of admission date (10-19 March, 20-30 March and 31 March to 10 April). (b) Boxplot of time before home discharge according to 3 periods of admission date (10-19 March, 20-30 March and 31 March to 10 April)

ESM TEXT

ESM Text 1 List of the collaborators of the CORONADO study

CORONADO Scientific committee –

Pr. Bertrand Cariou (Nantes) : Principal Investigator
Pr. Samy Hadjadj (Nantes) : Scientific Coordinator
Pr. Bernard Bauduceau (Begin hospital, St Mandé) – Treasurer FFRD : scientific and medical expert (diabetology, gerontology)
Pr. David Boutoille (Nantes) : scientific and medical expert (infectious diseases)
Pr. France Cazenave-Roblot (Poitiers) – Vice-president SPILF : scientific and medical expert (infectious diseases)
Pr. Jean-François Gautier (Lariboisière hospital, Paris) – Vice-Président SFD : scientific and medical expert (diabetology)
Pr. Pierre Gourdy (Toulouse) scientific and medical expert (diabetology)
Pr. Véronique Kerlan (Brest) – President SFE : scientific and medical expert (diabetology)
Pr. Bruno Laviolle (Rennes) : scientific and medical expert (methodology)
Pr. René Robert (Poitiers) : scientific and medical expert (intensive care)
Pr. Ronan Roussel (Bichat hospital, Paris) : scientific and medical expert (diabetology)
Pr. Charles Thivolet (Lyon) – President SFD : scientific and medical expert (diabetology)
Dr. Matthieu Wargny (Nantes) : scientific and medical expert (methodology)
Dr. Matthieu Pichelin (Nantes) : Project manager – Scientific Coordination
Mr. Claude Chaumeil - Vice-Président Fédération Française des Diabétiques (FFD)
Mr. Jean François Thebaut Vice-Président Fédération Française des Diabétiques (FFD)

CORONADO Collaborators list –

Name, FAMILY NAME, Hospital, Town, Country, Email address

Matthieu, WARGNY, CHU de Nantes, Nantes, France, matthieu.wargny@chu-nantes.fr

Pascale, MAHOT, CHU de Nantes, Nantes, France, pascale.moreau@chu-nantes.fr

Bertrand, CARIOU, CHU de Nantes, Nantes, France, bertrand.cariou@univ-nantes.fr

Samy, HADJADJ, CHU de Nantes, Nantes, France, samy.hadjadj@univ-nantes.fr

Matthieu, PICHELIN, CHU de Nantes, Nantes, France, matthieu.pichelin@univ-nantes.fr

Anne-Laure, FOURNIER-GUILLOUX, CHU de Nantes, Nantes, France, annelaure.fournierguilloux@chu-nantes.fr

Nicolas, MAUDUIT, CHU de Nantes, Nantes, France, nicolas.mauduit@chu-nantes.fr

Edith, BIGOT- CORBEL, CHU de Nantes, Nantes, France, edith.bigot@chu-nantes.fr

Anne-Sophie, BOUREAU, CHU de Nantes, Nantes, France, annesophie.boureau@chu-nantes.fr

Laure, DE DEKCEER, CHU de Nantes, Nantes, France, laure.dedecker@chu-nantes.fr

Audrey, ERNOULD, CHU de Nantes, Nantes, France, audrey.ernould@chu-nantes.fr

Claire, PRIMOT, CHU de Nantes, Nantes, France, claire.primot@chu-nantes.fr

Anne, SEGUIN, CHU de Nantes, Nantes, France, anne.seguin@chu-nantes.fr

Marielle, JOLIVEAU, CHU de Nantes, Nantes, France, marielle.joliveau@chu-nantes.fr

Sonia, POUVREAU, CHU de Nantes, Nantes, France, sonia.pouvreau@chu-nantes.fr

Chloé, FOURNIER, CHU de Nantes, Nantes, France, chloe.fournier@chu-nantes.fr

Jeremy, THUREAU, CHU de Nantes, Nantes, France, jeremy.thureau@chu-nantes.fr

Edith, FONTENEAU, CHU de Nantes, Nantes, France, edith.fonteneau@chu-nantes.fr

Pamela, HUBLAIN, CHU de Nantes, Nantes, France, Pamela.HUBLAIN@chu-nantes.fr

Carole, AGASSE, CHU de Nantes, Nantes, France, Carole.AGASSE@chu-nantes.fr

Mathilde, DE KERGARDEC, CHU de Nantes, Nantes, France, laurence.dekergardec@chu-nantes.fr

Vincent, MINVILLE, CHU Toulouse, Toulouse, France, minville.v@chu-toulouse.fr

Fanny, VARDON-BOUNES, CHU Toulouse, Toulouse, France, bounes.f@chu-toulouse.fr

Guillaume, MARTIN-BLONDEL, CHU Toulouse, Toulouse, France, martin-blondel.g@chu-toulouse.fr

Pierre, GOURDY, CHU Toulouse, Toulouse, France, pierre.gourdy@inserm.fr

Blandine, TRAMUNT, CHU Toulouse, Toulouse, France, blandine.tramunt@orange.fr

Marie-Christine, TURNIN, CHU Toulouse, Toulouse, France, turnin.mc@chu-toulouse.fr

Hélène, HANAIRE, CHU Toulouse, Toulouse, France, hanaire.h@chu-toulouse.fr

Jean-Michel, MANSUY, CHU Toulouse, Toulouse, France, mansuy.jm@chu-toulouse.fr

Didier, FABRE, CHU Toulouse, Toulouse, France, fabre.d@chu-toulouse.fr

Marie-Blanche, ARHAINX, CHU Toulouse, Toulouse, France, arhainx.mb@chu-toulouse.fr

Laurent, CAZALS, CHU Toulouse, Toulouse, France, cazals.l@chu-toulouse.fr

Laure, COMBES, CHU Toulouse, Toulouse, France, combes.l@chu-toulouse.fr

Emmanuelle, LAMI, CHU Toulouse, Toulouse, France, lami.e@chu-toulouse.fr

Mallory, CIANFERANI, CHU Toulouse, Toulouse, France, cianferani.m@chu-toulouse.fr

Bruno, MEGARBANE, Hôpital LARIBOISIERE, Paris, France, bruno.megarbane@aphp.fr

Pierre, LEROY, Hôpital LARIBOISIERE, Paris, France, pierre.leroy@aphp.fr

Jean-François, GAUTIER, Hôpital LARIBOISIERE, Paris, France, jean-francois.gautier@aphp.fr

Tiphaine, VIDAL-TRECAN, Hôpital LARIBOISIERE, Paris, France, tiphaine.vidal-trecan@aphp.fr

Jean-Pierre, RIVELINE, Hôpital LARIBOISIERE, Paris, France, jeanpierre.riveline@aphp.fr

Jean-Louis, LAPLANCHE, Hôpital LARIBOISIERE, Paris, France, jean-louis.laplanche@aphp.fr

Stéphane, MOULY, Hôpital LARIBOISIERE, Paris, France, stephane.mouly@aphp.fr

Louis, POTIER, Hôpital BICHAT, Paris, France, louis.potier@gmail.com

Ronan, ROUSSEL, Hôpital BICHAT, Paris, France, ronan.rousseau@aphp.fr

Malak, TAHER, Hôpital BICHAT, Paris, France, malak.taher@aphp.fr

Yawa, ABOULEKA, Hôpital BICHAT, Paris, France, yawa.abouleka@aphp.fr

Fetta, YAKER, Hôpital BICHAT, Paris, France, fettaamel.yaker@aphp.fr

Aurelie, CARLIER, Hôpital BICHAT, Paris, France, aurelie.carlier@aphp.fr

Anne, BOUTTEN, Hôpital BICHAT, Paris, France, anne.boutten@aphp.fr

Marilyne, HALLOT-FERON, Hôpital BICHAT, Paris, France, marilyne.feron@aphp.fr

Fadila, MOURAH, Hôpital BICHAT, Paris, France, fadila.mourah@gmail.com

Charles, THIVOLET, Hôpital Lyon Sud, Pierre Bénite, France, charles.thivolet@chu-lyon.fr

Emilie, BLOND, Hôpital Lyon Sud, Pierre Bénite, France, emilie.blond@chu-lyon.fr

Muriel, ROLLAND, Hôpital Lyon Sud, Pierre Bénite, France, muriel.rolland@chu-lyon.fr

Josep, VERDECHO MENDEZ, Hôpital Lyon Sud, Pierre Bénite, France, josep.verdecho-mendez@chu-lyon.fr

Marine, ALEXANDRE, Hôpital Lyon Sud, Pierre Bénite, France, marine.alexandre@chu-lyon.fr

Julien, POTTECHER, Nouvel hôpital civil, Strasbourg, France, julien.pottecher@chru-strasbourg.fr

Emilie, RICHER, Nouvel hôpital civil, Strasbourg, France, emilie.richerdupont@chru-strasbourg.fr

Laurent, MEYER, Nouvel hôpital civil, Strasbourg, France, laurent.meyer@chru-strasbourg.fr

Florina, LUCA, Hôpital Hautepierre, Strasbourg, France, florina.luca@chru-strasbourg.fr

Jean-Marc, LESSINGER, Nouvel hôpital civil, Strasbourg, France, Jean-Marc.LESSINGER@chru-strasbourg.fr

Thibault, BAHOUGNE, Hospices civils, Strasbourg, France, thibault.bahougne@chru-strasbourg.fr

Bruno, GUERCI, CHU Brabois Université de Lorraine, Nancy, France, b.guerci@chru-nancy.fr

Lisa, LUDWIG, CHU Brabois Université de Lorraine, Nancy, France, L.LUDWIG@chru-nancy.fr

Siham, BENZIRAR, CHU Brabois Université de Lorraine, Nancy, France, s.benzirar@chru-nancy.fr

Catherine, MALAPLATE, CHU Brabois Université de Lorraine, Nancy, France, c.malaplate@chru-nancy.fr

Thierry, MATTON, CHU Brabois Université de Lorraine, Nancy, France, t.matton@chru-nancy.fr

Julien, POISSY, Hôpital salengro CHU, Lille, France, julien.poissy@chru-lille.fr

Karine, FAURE, Hôpital Huriez CHRU, Lille, France, karine.faure@chru-lille.fr

Pierre, FONTAINE, Hôpital Huriez CHRU, Lille, France, pierre.fontaine@chru-lille.fr

Florence, BAUDOUX, Hôpital Huriez CHRU, Lille, France, florence.baudoux@chru-lille.fr

Anne, VAMBERGUE, Hôpital Huriez CHRU, Lille, France, anne.vambergue@chru-lille.fr

Jean David, PEKAR, Hôpital Huriez CHRU, Lille, France, jeandavid.PEKAR@chru-lille.fr

Marc, LAMBERT, Hôpital Calmette CHU, Lille, France, marc.lambert@chru-lille.fr

Cécile, YELNIK, Hôpital Calmette CHU, Lille, France, cecile.yelnik@chru-lille.fr

Amélie, BRUANDET, Hôpital Huriez CHRU, Lille, France, amelie.bruandet@chru-lille.fr

Laurent, PETIT, CHU de Bordeaux, Bordeaux, France, laurent.petit@chu-bordeaux.fr

Didier, NEAU, CHU de Bordeaux, Bordeaux, France, didier.neau@chu-bordeaux.fr

Vincent, RIGALLEAU, CHU de Bordeaux, Pessac, France, vincent.rigalleau@chu-bordeaux.fr

Annie, BERARD, CHU de Bordeaux, Bordeaux, France, annie.berard@chu-Bordeaux.fr

Amandine, GALIOOT, CHU de Bordeaux, Pessac, France, amandine.galioot@chu-bordeaux.fr

Remy, COUDROY, CHU Poitiers, Poitiers, France, Remi.COUDROY@chu-poitiers.fr

Arnaud, THILLE, CHU Poitiers, Poitiers, France, arnaud.thille@chu-poitiers.fr

René, ROBERT, CHU Poitiers, Poitiers, France, rene.robert@chu-poitiers.fr

France, ROBLOT-CAZENAVE, CHU Poitiers, Poitiers, France, France.CAZENAVE-ROBLOT@chu-poitiers.fr

Blandine, RAMMAERT, CHU Poitiers, Poitiers, France, blandine.rammaert@chu-poitiers.fr

Pierre Jean, SAULNIER, CHU Poitiers, Poitiers, France, pierrejean.saulnier@gmail.com

Xavier, PIGUEL, CHU Poitiers, Poitiers, France, xavier.piguel@chu-poitiers.fr

Nesrine, BENHENDA, CHU Poitiers, Poitiers, France, Nesrine.BENHENDA@chu-poitiers.fr

Camille, HUSSON, CHU Poitiers, Poitiers, France, Camille.HUSSON@chu-poitiers.fr

Celine, OLIVIER, CHU Poitiers, Poitiers, France, celine.olivier@chu-poitiers.fr

Florence, TORREMOCHA, CHU Poitiers, Poitiers, France, florence.torremocha@chu-poitiers.fr

Mathilde, FRATY, CHU Poitiers, Poitiers, France, mathilde.fraty@chu-poitiers.fr

Marie, FLAMEN D'ASSIGNY, CHU Poitiers, Poitiers, France, marie.flamen-dassigny@chu-poitiers.fr

Aurelie, MIOT, CHU Poitiers, Poitiers, France, aurelie.miot@chu-poitiers.fr

Valentin, BOSSARD, CHU Poitiers, Poitiers, France, valentin.bossard988@gmail.com

Kada, KLOUCHE, Hôpital Lapeyronie, Chu Montpellier, France, k-klouche@chu-montpellier.fr

Alain, MAKINSON, Hôpital Lapeyronie, Chu Montpellier, France, a-makinson@chu-montpellier.fr

Ariane, SULTAN, Hôpital Lapeyronie, Chu Montpellier, France, a-sultan@chu-montpellier.fr

Jean-Baptiste, BONNET, Hôpital Lapeyronie, Chu Montpellier, France, jean-baptiste-bonnet@chu-montpellier.fr

Vincent, FOULONGNE, Hôpital St Eloi, Chu Montpellier, France, v-foulongne@chu-montpellier.fr

Florence, GALTIER, Hôpital St Eloi, Chu Montpellier, France, f-galtier@chu-montpellier.fr

Cécile, AUBRON, CHU de Brest, Brest, France, cecile.aubron@ch-brest.fr

Séverine, ANSART, CHU de Brest, Brest, France, severine.ansart@chu-brest.fr

Véronique, KERLAN, CHU de Brest, Brest, France, veronique.kerlan@chu-brest.fr

Pascale, QUINIOU, CHU de Brest, Brest, France, pascale.quiniou@chu-brest.fr

Jean- Luc, CARRE, CHU de Brest, Brest, France, jean-luc.carre@chu-brest.fr

Stéphane, QUESNOT, CHU de Brest, Brest, France, stephane.quesnot@chu-brest.fr

Bruno, LAVIOLLE, CHU de Rennes, Rennes, France, bruno.laviolle@chu-rennes.fr

Carole, SCHWEBEL, CHU Grenoble Alpes, Grenoble, France, Cschwebel@chu-grenoble.fr

Olivier, EPAULARD, CHU Grenoble Alpes, Grenoble, France, OEpaulard@chu-grenoble.fr

Pierre-Yves, BENHAMOU, CHU Grenoble Alpes, Grenoble, France, PYBenhamou@chu-grenoble.fr

Cécile, BETRY, CHU Grenoble Alpes, Grenoble, France, Cbetry@chu-grenoble.fr

Anne-Laure, BOREL, CHU Grenoble Alpes, Grenoble, France, ALBorel@chu-grenoble.fr

Sandrine, LABLANCHE, CHU Grenoble Alpes, Grenoble, France, Slablanche@chu-grenoble.fr

Dorra, GUERGOUR, CHU Grenoble Alpes, Grenoble, France, Dguergour@chu-grenoble.fr

Catherine, DUCLOS, Hôpital AVICENNE, Bobigny, France, catherine.duclos@aphp.fr

Emmanuel, COSSON, Hôpital AVICENNE, Bobigny, France, emmanuel.cosson@aphp.fr

Erwan, GUYOT, Hôpital AVICENNE, Bobigny, France, erwan.guyot@aphp.fr

Aurore, DENIAU, Hôpital AVICENNE, Bobigny, France, aurore.deniau@aphp.fr

Phucthutrang, NGUYEN, Hôpital AVICENNE, Bobigny, France, phucthutrang.nguyen@aphp.fr

Yves, REZNIK, CHU Caen Normandie, Caen, France, reznik-y@chu-caen.fr

Michael, JOUBERT, CHU Caen Normandie, Caen, France, joubert-m@chu-caen.fr

Stéphane, ALLOUCHE, CHU Caen Normandie, Caen, France, allouche-s@chu-caen.fr

Lydia, GUITTET, CHU Caen Normandie, Caen, France, guittet-l@chu-caen.fr

Steven, GRANGE, CHU Rouen, Rouen, France, steven.grange@chu-rouen.fr

Manuel, ETIENNE, CHU Rouen, Rouen, France, manuel.etienne@chu-rouen.fr

Gaëtan, PRÉVOST, CHU Rouen, Rouen, France, gaetan.prevost@chu-rouen.fr

Valéry, BRUNEL, CHU Rouen, Rouen, France, valery.brunel@chu-rouen.fr

Jean-Christophe, LAGIER, IHU Marseille, Marseille, France, JeanChristophe.LAGIER@ap-hm.fr

Didier, RAOULT, IHU Marseille, Marseille, France, didier.raoult@ap-hm.fr

Anne, DUTOUR, CHU Nord et Conception, Marseille, France, anne.dutour@ap-hm.fr

Bénédicte, GABORIT, CHU Nord et Conception, Marseille, France, benedicte.gaborit@ap-hm.fr

Sandrine, BOULLLU, CHU Nord, Marseille, France, sandrine.boullu@ap-hm.fr

Patrice, DARMON, CHU Nord et Conception, Marseille, France, patrice.darmon@ap-hm.fr

Adèle, LASBLEIZ, CHU Nord et Conception, Marseille, France, adele.lasbleiz@ap-hm.fr

Mathieu, CERINO, CHU Conception, Marseille, France, mathieu.cerino@ap-hm.fr

Fanny, ROMAIN, CHU Conception, Marseille, France, fanny.romain@ap-hm.fr

Marie, HOUSSAYS, CHU Conception, Marseille, France, marie.houssays@ap-hm.fr

Jean Pierre, QUENOT, CHU François Mitterand, Dijon, France, jean-pierre.quenot@chu-dijon.fr

Lionel, PIROTH, CHU François Mitterand, Dijon, France, lionel.piroth@chu-dijon.fr

Bruno, VERGÈS, CHU François Mitterand, Dijon, France, bruno.verges@chu-dijon.fr

Laurence, DUVILLARD, CHU François Mitterand, Dijon, France, laurence.duvillard@chu-dijon.fr

Bernard, BONNOTTE, CHU François Mitterand, Dijon, France, bernard.bonnotte@chu-dijon.fr

Alain, MERCAT, CHU ANGERS, Angers, France, almercat@chu-angers.fr

Vincent, DUBEE, CHU ANGERS, Angers, France, vincent.dubee@chu-angers.fr

Ingrid, ALLIX, CHU ANGERS, Angers, France, inallix@chu-angers.fr

Patrice, RODIEN, CHU ANGERS, Angers, France, parodien@chu-angers.fr

Robin, DHERSIN, CHU ANGERS, Angers, France, Robin.Dhersin@chu-angers.fr

Maylis, LEBEAULT, CHU ANGERS, Angers, France, maylis.lebeault@chu-angers.fr

wojciech, TRZEPIZUR, CHU ANGERS, Angers, France, WoTrzepizur@chu-angers.fr

Jocelyne, LOISON, CHU ANGERS, Angers, France, jocelyne.loison@chu-angers.fr

Antoine, BRANGIER, CHU ANGERS, Angers, France, antoine.brangier@chu-angers.fr

Pierre, ASFAR, CHU ANGERS, Angers, France, piasfar@chu-angers.fr

Pascal, REYNIER, CHU ANGERS, Angers, France, pareynier@chu-angers.fr

Françoise, LARCHER, CHU ANGERS, Angers, France, frlarcher@chu-angers.fr

Françoise, JOUBAUD, CHU ANGERS, Angers, France, frjoubaud@chu-angers.fr

Marie-Rita, ANDREU, CHU ANGERS, Angers, France, marierita.andreu@chu-angers.fr

Geoffrey, URBANSKI, CHU ANGERS, Angers, France, geoffrey.urbanski@chu-angers.fr

Laurent, HUBERT, CHU ANGERS, Angers, France, lahubert@chu-angers.fr

Cedric, ANNWEILER, CHU ANGERS, Angers, France, ceannweiler@chu-angers.fr

Jean, DELLAMONICA, CHU de Nice - Hôpital de l'Archet, Nice, France, dellamonica.j@chu-nice.fr

Johan, COURJON, CHU de Nice - Hôpital de l'Archet, Nice, France, courjon.j@chu-nice.fr

Nicolas, CHEVALIER, CHU de Nice - Hôpital de l'Archet, Nice, France, chevalier.n@chu-nice.fr

Giulia, CHINETTI, CHU de Nice - Hôpital Pasteur, Nice, France, chinetti.g@chu-nice.fr

Magda, CHAFAI, CHU de Nice - Hôpital de l'Archet, Nice, France, chafai.m@chu-nice.fr

Bruno, MOURVILLIER, CHU de Reims, Reims, France, bmourvillier@chu-reims.fr

Firouze, BANI-SADR, CHU de Reims, Reims, France, fbanisadr@chu-reims.fr

Sarra, BARRAUD, CHU de Reims, Reims, France, sbarraud@chu-reims.fr

Brigitte, DELEMER, CHU de Reims, Reims, France, bdelemer@chu-reims.fr

Philippe, GILLERY, CHU de Reims, Reims, France, pgillery@chu-reims.fr

Pascale, LABEDADE, Centre Hospitalier Sud-Francilien, Corbeil-Essonnes, France, pascale.labedade@chsf.fr

Amélie, CHABROL, Centre Hospitalier Sud-Francilien, Corbeil-Essonnes, France, amelie.chabrol@chsf.fr

Alfred, PENFORNIS, Centre Hospitalier Sud-Francilien, Corbeil-Essonnes, France, alfred.penfornis@chsf.fr

Catherine, PETIT, Centre Hospitalier Sud-Francilien, Corbeil-Essonnes, France, catherine.petit@chsf.fr

Coralie, AMADOU, Centre Hospitalier Sud-Francilien, Corbeil-Essonnes, France, coralie.amadou@chsf.fr

Maxime, ADLER, Centre Hospitalier Sud-Francilien, Corbeil-Essonnes, France, maxime.adler@chsf.fr

Clément, DUBOST, HIA Bégin, Saint Mandé, France, clement.dubost@intradef.gouv.fr

Pierre-Louis, CONAN, HIA Bégin, Saint Mandé, France, pierre-louis.conan@intradef.gouv.fr

Lyse, BORDIER, HIA Bégin, Saint Mandé, France, lyse.bordier@intradef.gouv.fr

Franck, CEPPA, HIA Bégin, Saint Mandé, France, franck.ceppa@intradef.gouv.fr

Cyril, GARCIA, HIA Bégin, Saint Mandé, France, cyril1.garcia@intradef.gouv.fr

Mathilde, SOLLIER, HIA Bégin, Saint Mandé, France, mathilde.sollier@intradef.gouv.fr

Olivier, DUPUY, GH Paris Saint Joseph, Paris, France, odupuy@hpsj.fr

Sophie, LAPLANCE, GH Paris Saint Joseph, Paris, France, slaplanche@hpsj.fr

Olivier, BILLUART, GH Paris Saint Joseph, Paris, France, obilluart@hpsj.fr

Marie Joseph, AROULANDA, GH Paris Saint Joseph, Paris, France, mjaroulanda@hpsj.fr

Frédérique, OLIVIER, CH CAHORS, Cahors, France, frederique.olivier@ch-cahors.fr

Florence, AYON, CH CAHORS, Cahors, France, florence.ayon@ch-cahors.fr

Nathalie, WILHELM, CH CAHORS, Cahors, France, nathalie.wilhelm@ch-cahors.fr

Loic, EPELBOIN, CHU Cayennes, Cayenne, France, loic.epelboin@ch-cayenne.fr

Nadia, SABBAH, CHU Cayennes, Cayenne, France, nadia.sabbah@ch-cayenne.fr

Aurelie, CHARPIN, CHU Cayennes, Cayenne, France, aurelie.charpin@ch-cayenne.fr

Pierre, SQUARA, Clinique Ambroise Paré, Paris, France, pierre.squara@orange.fr

Olivier, BELLIARD, Clinique Ambroise Paré, Paris, France, olivier_belliard@yahoo.fr

Claude, DUBOIS, Clinique Ambroise Paré, Paris, France, claudedubois@clinique-a-pare.fr

Michel, MARRE, Clinique Ambroise Paré, Paris, France, marremichel@gmail.com

Johann, AUCHABIE, CH Cholet, Cholet, France, johann.auchabie@ch-cholet.fr

Roxane, COURTOIS, CH Cholet, Cholet, France, roxane.courtois@ch-cholet.fr

Thierry, DURIEZ, CH Cholet, Cholet, France, thierry.duriez@ch-cholet.fr

Tiphaine, MERGEY, CH Cholet, Cholet, France, tiphaine.mergey@ch-cholet.fr

Laura, VALLEE, CH Cholet, Cholet, France, laura.vallee@ch-cholet.fr

Laetitia, SEGUIN, CH Cholet, Cholet, France, laetitia.seguin@ch-cholet.fr

Abdallah, AL-SALAMEH, CHU Amiens- Picardie, Amiens, France, al-salameh.abdallah@chu-amiens.fr

Jean-Philippe, LANOIX, CHU Amiens- Picardie, Amiens, France, lanoix.jean-philippe@chu-amiens.fr

Sandrine, SORIOT-THOMAS, CHU Amiens- Picardie, Amiens, France, soriot-thomas.sandrine@chu-amiens.fr

Anne-Marie, BOURGEOIS-DESCOULS, CHU Amiens- Picardie, Amiens, France, bourgeois.anne-marie@chu-amiens.fr

Rachel, DESAILLOUD, CHU Amiens- Picardie, Amiens, France, dessaillud.rachel@chu-amiens.fr

Natacha, GERMAIN, CHU de Saint Etienne, Saint Etienne, France, natacha.germain@chu-st-etienne.fr

Bogdan, GALUSCA, CHU de Saint Etienne, Saint Etienne, France, bogdan.galusca@chu-st-etienne.fr

Gwenaelle, BELLETON, CHU de Saint Etienne, Saint Etienne, France, gwenaelle.belleton@chu-st-etienne.fr

Nesrine, MAROUANI, CHU de Saint Etienne, Saint Etienne, France, nesrine.marouani@chu-st-etienne.fr

Delia, PALAGHIU, CHU de Saint Etienne, Saint Etienne, France, delia.palaghiu@chu-st-etienne.fr

Amira, HAMMOUR, CHU de Saint-Etienne, Saint-Etienne, France, amira.hammour@chu-st-etienne.fr

Fernando, BERDAGUER, Hôpital Nord Franche-Comté, Belfort, France, fberdaguer@hotmail.com

Thimothée, KLOPFENSTEIN, Hôpital Nord Franche-Comté, Belfort, France, Timothee.KLOPFENSTEIN@hnfc.fr

Hajer, ZAYET, Hôpital Nord Franche-Comté, Belfort, France, Hajer.ZAYET@hnfc.fr

Patrice, WINISZEWSKI, Hôpital Nord Franche-Comté, Belfort, France, Patrice.WINISZEWSKI@hnfc.fr

Marie, ZANUSSO, Hôpital Nord Franche-Comté, Belfort, France, marie.zanusso@hnfc.fr

Pauline, GARNIER, Hôpital Nord Franche-Comté, Belfort, France, pauline.garnier@hnfc.fr

Ingrid, JULIER, CH de Ales, Ales, France, dr.julier@ch-ales.fr

Karim, HAMZAOU, CH de Ales, Ales, France, dr.hamzaoui@ch-ales.fr

Sophie, MARTY-GRES, CH de Ales, Ales, France, biologie@ch-ales.fr

Tarik, EL SADKI, CH de Ales, Ales, France, biologie@ch-ales.fr

Lucile, CADOT, CH de Ales, Ales, France, biologie@ch-ales.fr

Jean-Louis, DUBOST, CH de Pontoise, Pontoise, France, jean-louis.dubost@ght-novo.fr

Céline, GONFROY, CH de Pontoise, Pontoise, France, celine.gonfroy@ght-novo.fr

Catherine, CAMPINOS, CH de Pontoise, Pontoise, France, catherine.campinos@ght-novo.fr

Pascale, MARTRES, CH de Pontoise, Pontoise, France, pascale.martres@ght-novo.fr

Marie Pierre, COULHON, CH de Pontoise, Pontoise, France, marie-pierre.coulhon@ght-novo.fr

Nicolas, ALLOU, CHU Felix Guyon, Saint Denis, France, nicolas.allou@chu-reunion.fr

Marwa, BACHIR, CHU Felix Guyon, Saint Denis, France, marwa.bachir@chu-reunion.fr

Stella, HOANG, CHU Felix Guyon, Saint Denis, France, stella.hoang@chu-reunion.fr

Candice, KEMBELLEC, CHU Felix Guyon, Saint Denis, France, candice.kembellec@chu-reunion.fr

Olivia, SUPPLY, CHU Felix Guyon, Saint Denis, France, olivia.suply@chu-reunion.fr

Fatima, KHARCHA, CHU Felix Guyon, Saint Denis, France, fatima.kharcha@chu-reunion.fr

Anne-Claire, DEVOUGE, CHU Felix Guyon, Saint Denis, France, anne-claire.devouge@chu-reunion.fr

Anna, FLAUS-FURMANUK, CHU Felix Guyon, Saint Denis, France, anna.flaus-furmaniuk@chu-reunion.fr

Isabelle, MADELINE, CHU Felix Guyon, Saint Denis, France, isabelle.madeline@chu-reunion.fr

Vincent, EHINGER, CHU Felix Guyon, Saint Denis, France, vincent.ehinger@chu-reunion.fr

Sophie, BASTARD, CHU Felix Guyon, Saint Denis, France, sophie.bastard@chu-reunion.fr

Loic, RAFFRAY, CHU Felix Guyon, Saint Denis, France, loic.raffray@chu-reunion.fr

Frederic, RENO, CHU Felix Guyon, Saint Denis, France, frederic.renou@chu-reunion.fr

Aude, BOJARSKI, CHU Felix Guyon, Saint Denis, France, aude.bojarski@chu-reunion.fr

Caroline, PAUL, CHU Felix Guyon, Saint Denis, France, caroline.paul@chu-reunion.fr

Karine, BORSU, CHU Felix Guyon, Saint Denis, France, karine.borsu@chu-reunion.fr

Angelique, GORLIN, CHU Felix Guyon, Saint Denis, France, angelique.gorlin@chu-reunion.fr

Servane, DI BERNARDO, CHU Felix Guyon, Saint Denis, France, servane.dibernardo@chu-reunion.fr

Carole, TRUONG VAN UT, CHU Felix Guyon, Saint Denis, France, carole.truong-van-ut@chu-reunion.fr

Stephane, RENAUD, CHU Felix Guyon, Saint Denis, France, stephane.renaud@chu-reunion.fr

Antoine, VIGNOLES, CHU Felix Guyon, Saint Denis, France, antoine.vignoles@chu-reunion.fr

Emilie, FOCH, CHU Felix Guyon, Saint Denis, France, emilie.foch@chu-reunion.fr

Laurie, MASSE, CHU Felix Guyon, Saint Denis, France, laurie.masse@chu-reunion.fr

Hubert, GRAND, robert boulin, Libourne, France, hubert.grand@ch-libourne.fr

Helene, FERRAND, robert boulin, Libourne, France, helene.ferrand@ch-libourne.fr

Christelle, RAFFAITIN-CARDIN, robert boulin, Libourne, France, christelle.raffaitin@ch-libourne.fr

Hadjer, ZELLAGUI, robert boulin, Libourne, France, hadjer.zellagui@ch-libourne.fr

Celine, CASTANG-BRACHET, robert boulin, Libourne, France, celine.castang@ch-libourne.fr

Frederique, BOURY, robert boulin, Libourne, France, frederique.boury@ch-libourne.fr

Ana, ALVAREZ TENA, CH Albi, Albi, France, ana.alvareztena@ch-albi.fr

Isabelle, MOURA, CH Albi, Albi, France, isabelle.moura@ch-albi.fr

Pierre, KALFON, LOUIS PASTEUR, Le Coudray, France, pkalfon@ch-chartres.fr

Juliana, DARASTEANU, LOUIS PASTEUR, Le Coudray, France, jdarasteanu@ch-cahrtres.fr

Arnaud, MONIER, LOUIS PASTEUR, Le Coudray, France, amonier@ch-chartres.fr

Pascal, FOUCAULT, LOUIS PASTEUR, Le Coudray, France, pfoucault@ch-chartres.fr

Alexandra, DEPUILLE, LOUIS PASTEUR, Le Coudray, France, adepuille@ch-chartres.fr

Stéphanie, LAUGIER-ROBIOLLE, CH D'AUCH, 32000, France, s.laugier-robiolle@ch-auch.fr

Patrick, CANEIRO, CH D'AUCH, 32000, France, p.caneiro@ch-auch.fr

Maud, BASSO, CH D'AUCH, 32000, France, maud.basso@ch-auch.fr

Etienne, LARGER, Hôpital COCHIN, Paris, France, etienne.larger@aphp.fr

Samir, BOUAM, Hôpital COCHIN, Paris, France, samir.bouam@aphp.fr

Wahiba, BENZENATI, Hôpital COCHIN, Paris, France, wahiba.benzenati-ext@aphp.fr

Leila, AIT BACHIR, Hopital francobritannique, Levallois, France, leila.aitbachir@ihfb.org

Camille, CUSSAC PILLEGAND, Hopital francobritannique, Levallois, France, camille.cussac-pillegand@ihfb.org

Marc, VASSE, Hopital francobritannique, Suresnes, France, marc.vasse@hopital-foch.fr

Christophe, MICHARD, CH du Forez, Montbrison, France, christophe.michard@ch-forez.fr

Nathanaëlle, MONTANIER, CH du Forez, Montbrison, France, nathanaelle.montanier@ch-forez.fr

Luc, MILLOT, CH du Forez, Montbrison, France, luc.millot@ch-forez.fr

Françoise, CREPET, CH du Forez, Montbrison, France, francoise.crepet@ch-forez.fr

Danielle, RATSIMBA, CH du Forez, Montbrison, France, danielle.ratsimba@ch-forez.fr

Kevin, BOUILLER, CHU JEAN MINJOZ, Besancon, France, kbouiller@chu-besancon.fr

Sophie, BOROT, CHU JEAN MINJOZ, Besancon, France, sophie.borot@univ-fcomte.fr

Isabelle, BRUCKERT, CHU JEAN MINJOZ, Besancon, France, ibruckert@chu-besancon.fr

Annie, CLERGEOT, CHU JEAN MINJOZ, Besancon, France, aclergeot@chu-besancon.fr

Franck, SCHILLO, CHU JEAN MINJOZ, Besancon, France, fschillo@chu-besancon.fr

Dorothée, VIGNES, CHU Antoine Béclère, Clamart, France, dorothée.vignes@aphp.fr

Muriel, BOURGEON-GHITTORI, CHU Antoine Béclère, Clamart, France, muriel.bourgeon@aphp.fr

Hamoud, LACHGAR, CHU Antoine Béclère, Clamart, France, hamoud.lachgar@aphp.fr

Claire, LAMBERT DE CURSAY, CHU Antoine Béclère, Clamart, France, claire.lambertdecursay@aphp.fr

Stéphane, LEVANTE, CHU Antoine Béclère, Clamart, France, stephane.levante@aphp.fr

Jean Charles, AUREGAN, CHU Antoine Béclère, Clamart, France, jean-charles.auregan@aphp.fr

Antoine, MERLET, CH Bretagne Atlantique, Vannes, France, antoine.merlet@ch-bretagne-atlantique.fr

Cécile, ZARAGOZA, CH Bretagne Atlantique, Vannes, France, cecile.zaragora@ch-bretagne-atlantique.fr

Gwénaëlle, ARNAULT, CH Bretagne Atlantique, Vannes, France, gwenaelle.arnault@ch-bretagne-atlantique.fr

Anne-Gaëlle, LE LOUPP, CH Bretagne Atlantique, Vannes, France, anne-gaelle-le8loupp@ch-bretagne-atlantique.fr

Olivier, LESIEUR, Hopital Saint Louis, La Rochelle, France, olivier.lesieur@ch-larochelle.fr

Mariam, RONCATO-SABERAN, Hopital Saint Louis, La Rochelle, France, mariam.roncato@ch-larochelle.fr

Didier, GOUET, Hopital Saint Louis, La Rochelle, France, didier.gouet@ch-larochelle.fr

Romain, LEMARIE, Hopital Saint Louis, La Rochelle, France, romain.lemarie@ch-larochelle.fr

Hong An, ALLANO, Hopital Saint Louis, La Rochelle, France, hong-an.allano@ght-atlantique17.fr

Emmanuel, VIVIER, Saint-Joseph Saint-Luc, Lyon, France, evivier@ch-stjoseph-stluc-lyon.fr

Caroline, PARISET, Saint-Joseph Saint-Luc, Lyon, France, cpariset@ch-stjoseph-stluc-lyon.fr

Cédric, LUYTON, Saint-Joseph Saint-Luc, Lyon, France, cluyton@ch-stjoseph-stluc-lyon.fr

Lucien, MARCHAND, Saint-Joseph Saint-Luc, Lyon, France, lmarchand@ch-stjoseph-stluc-lyon.fr

Fanny, DOROSZEWSKI, Saint-Joseph Saint-Luc, LYON, France, fdoroszewski@ch-stjoseph-stluc-lyon.fr

Matthieu, PECQUET, Saint-Joseph Saint-Luc, Lyon, France, mpecquet@ch-stjoseph-stluc-lyon.fr

Laurent, PERARD, Saint-Joseph Saint-Luc, Lyon, France, lperard@ch-stjoseph-stluc-lyon.fr

Sylvie, VUILLERMOZ-BLAS, Saint-Joseph Saint-Luc, Lyon, France, svuillermoz@ch-stjoseph-stluc-lyon.fr

Nicolas, KACKI, CHD de Vendée, La Roche Sur Yon, France, nicolas.kacki@chd-vendée.fr

Patricia, CHARRIER, CHD de Vendée, La Roche Sur Yon, France, patricia.charrier@chd-vendée.fr

Amélie, DUCET-BOIFFARD, CHD de Vendée, La Roche Sur Yon, France, amelie.ducet-boiffard@chd-vendee.fr

Françoise, DESROYS DU ROURE, CHD de Vendée, La Roche Sur Yon, France, francois.desroysduroure@chd-vendee.fr

Olivier, BOURRON, Pitié-Salpêtrière, Paris, France, olivier.bourron@aphp.fr

Dominique, BONNEFONT-ROUSSELOT, Pitié-Salpêtrière, Paris, France, dominique.rousselet@aphp.fr

Suzanne, LAROCHE, Pitié-Salpêtrière, Paris, France, Suzanne.laroche@aphp.fr

Franck, PHAN, Pitié-Salpêtrière, Paris, France, franck.phan@aphp.fr

Agnès, HARTEMANN, Pitié-Salpêtrière, Paris, France, agnes.hartemann@aphp.fr

Cyrielle, CAUSSY, CHU LYON SUD, Pierre Benite, France, cyrielle.caussy@chu-lyon.fr

Emmanuel, DISSE, CHU LYON SUD, Pierre Benite, France, emmanuel.disse@chu-lyon.fr

Emilie, BLOND, CHU LYON SUD, Pierre Benite, France, emilie.blond@chu-lyon.fr

Claude, GUERIN, Hôpital Croix Rousse, Lyon, France, claude.guerin@chu-lyon.fr

Thomas, PERPOINT, Hôpital Croix Rousse, Lyon, France, thomas.perpoint@chu-lyon.fr

Philippe, MOULIN, Hôpital Louis pradel, Lyon, France, philippe.moulin@chu-lyon.fr

Régine, CARTIER, Hôpital Louis pradel, Lyon, France, regine.cartier@chu-lyon.fr

Geoffroy, HARIRI, Hôpital Saint-Antoine, Paris, France, geoffroy.hariri@aphp.fr

Dorothee, CHOPIN, Hôpital Saint-Antoine, Paris, France, dorothee.chopin@aphp.fr

Camille, VATIER, Hôpital Saint-Antoine, Paris, France, camille.vatier@aphp.fr

Nathalie, BOURCIGAU, Hôpital Saint-Antoine, Paris, France, nathalie.bourcigaux@aphp.fr

Emmanuelle, CHAIGNEAU, Hôpital Saint-Antoine, Paris, France, emmanuelle.chaigneau@aphp.fr

Sophie, CHRISTIN-MAITRE, Hôpital Saint-Antoine, Paris, France, sophie.christin-maitre@aphp.fr

Bruno, DONADILLE, Hôpital Saint-Antoine, Paris, France, bruno.donadille@aphp.fr

Bruno, FEVE, Hôpital Saint-Antoine, Paris, France, bruno.feve@aphp.fr

Sophie, LAMOTHE, Hôpital Saint-Antoine, Paris, France, sophie.lamothe@aphp.fr

Julie, SARFATI, Hôpital Saint-Antoine, Paris, France, julie.sarfati@aphp.fr

Pascal, PERNET, Hôpital Saint-Antoine, Paris, France, pascal.pernet@aphp.fr

Anne, CHAMBON, CH Côtes Basques, Bayonne, France, achambon@ch-cotebasque.fr

Delphine, DEMARSY, CH Côtes Basques, Bayonne, France, ddemarsy@ch-cotebasque.fr

Hugo, CAMPAGNE, CH Côtes Basques, Bayonne, France, hcampagne@ch-cotebasque.fr

Françoise, LATIL-PLAT, CH Avignon, Avignon, France, fplat@ch-avignon.fr

Monica, BERNE, CH Avignon, Avignon, France, MBeyrne@ch-avignon.fr

Marilyne, GRINAND, CH Avignon, Avignon, France, GRINAND.Marilyne@ch-avignon.fr

Marion, TOUZET, CH Avignon, Avignon, France, TOUZET.Marion@ch-avignon.fr

Aydrey, ZABULON, CHU Martinique, Fort de France, France, audrey.zabulon@chu-martinique.fr

Jocelyne, CRASPAG, CHU Martinique, Fort de France, France, jocelyne.craspag@chu-martinique.fr

Catherine, LEDOUX, CHU Martinique, Fort de France, France, catherine.ledoux@chu-martinique.fr

Cedric, CONTARET, CHU Martinique, Fort de France, France, Cedric.CONTARET@chu-martinique.fr

Blandine, JANAND-DELENNE, CH du Pays d'Aix, Aix en Provence, France, bdelenne@ch-aix.fr

Anaïs, GIRAUD, CH du Pays d'Aix, Aix en Provence, France, agiraud@ch-aix.fr

Marie Lou, LACRIMINI, CH du Pays d'Aix, Aix en Provence, France, mlacrimini@ch-aix.fr

Joëlle, ARRIVIE, CH de Bigorre, Tarbes, France, jarrivie@ch-tarbes-vic.fr

Deborah, ANCELLE, CH Le Havre, Le Havre, France, deborah.ancelle@ch-havre.fr

Carine, GUILLOIS, CH Le Havre, Le Havre, France, carine.guillois@ch-havre.fr

Bénédicte, FREMY, CH Agen, Agen, France, fremyb@ch-agen-nerac.fr

Amina, CHAALAL, CH Agen, Agen, France, chaalalam@ch-agen-nerac.fr

Gaëlle, BARRANDE, CH Argenteuil, Argenteuil, France, gaelle.barrande@ch-argenteuil.fr

Anne, DORANGE, CH Le Mans, Le Mans, France, adorange@ch-lemans.fr

Eglantine, ROUANET, CH Le Mans, Le Mans, France, erouanet@ch-lemans.fr

Dominique, SERET-BEGUE, CH Gonesse, Gonesse, France, dominique.seret-begue@ch-gonesse.fr

Audrey, SAOUD, CH Gonesse, Gonesse, France, audrey.saoud@ch-gonesse.fr

Anne-Marie, GUEDJ, CH Nîmes, Nîmes, France, anne.marie.guedj@chu-nimes.fr

Nathalie, BEDOS, CH Nîmes, Nîmes, France, nathalie.bedos@chu-nimes.fr

Fritz-Line, VELAYOUDOM, CHU Guadeloupe, Les Abymes, France, fritz-line.velayoudom@univ-antilles.fr

Marie, DUMAS, Hôpital St Vincent de Paul, Lille, France, dumas.marie@ghicl.net

Benoite, GONDA, Hôpital St Vincent de Paul, Lille, France, Gonda.Benoite@ghicl.net

Christine, COFFIN, CH Perigueux, Perigueux, France, christine.coffin@ch-perigueux.fr

Stéphanie, GIBIAT, CH Perigueux, Perigueux, France, urc@ch-perigueux.fr

Myriam, LUNGO, CH de Bastia, Bastia, France, myriam.lungo@gmail.com

Chantal, BULLY, Les Portes du Sud, Venissieux, France, C.BULLY@LESPORTESDUSUD.NET

Pierre, SERUSCLAT, Les Portes du Sud, Venissieux, France, p.serusclat@lesportesdusud.net

Stella, BULLY, Les Portes du Sud, Venissieux, France, stellabully.ecsel@gmail.com

Patricia, CARRE, Les Portes du Sud, Venissieux, France, patcarre69@gmail.com

Jean-Philippe, LEBERRE, Medipôle Hôpital Mutualiste, Villeurbanne, France, j.leberre@resamut.fr

Carlos, ELKHOURY, Medipôle Hôpital Mutualiste, Villeurbanne, France, c.elkhoury@resamut.fr

Marine, THIEUX, Medipôle Hôpital Mutualiste, Villeurbanne, France, m.thieux@resamut.fr

Laetitia, PARADISI-PRIEUR, Medipôle Hôpital Mutualiste, Villeurbanne, France, l.paradisi-prieur@resamut.fr