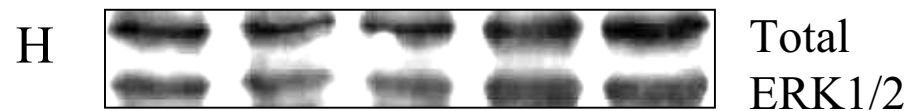
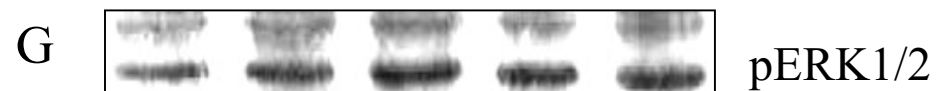
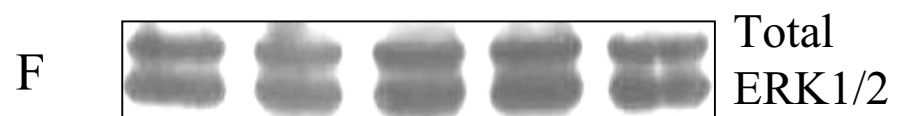
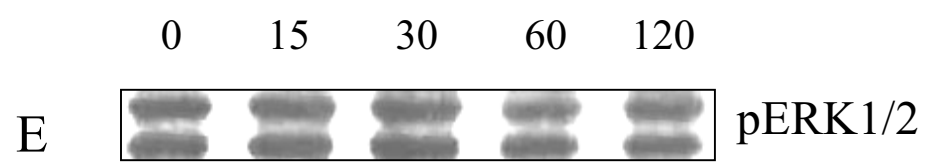
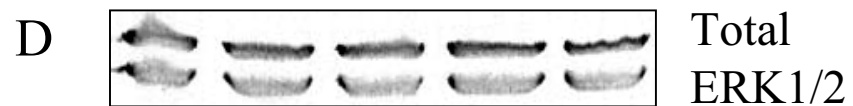
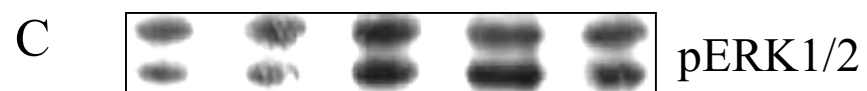
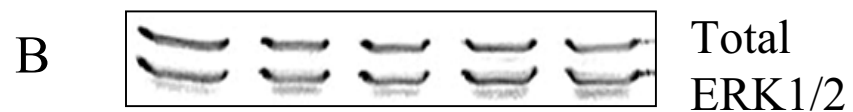
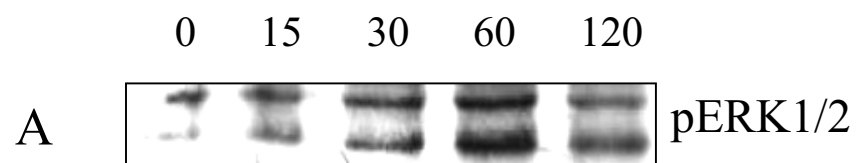


Stimulation

Time (minutes)



## Figure Legends

### Figure.S1

**CFP-10 induced ERK1/2 phosphorylation in both cytoplasm and nucleus.**  $10 \times 10^6$

RAW264.7 cells were stimulated with  $5 \mu\text{g/ml}$  of recombinant CFP-10 for 0, 15, 30, 60

and 120 minutes; cytoplasmic and nuclear extracts were run on gel and probed with

anti-phospho-ERK1/2 antibody. (A) phosphorylation of ERK1/2 in cytoplasm. (C)

phosphorylation of ERK1/2 in nucleus. (B) and (D) Total ERK1/2 in the cytoplasmic

and nuclear extracts respectively at different time points to confirm equal loading of

samples in all the lanes.

## **Figure.S2**

**CFP10:ESAT6 complex induced ERK1/2 phosphorylation in both cytoplasm and nucleus.**  $10 \times 10^6$  RAW264.7 cells were stimulated with  $5 \mu\text{g/ml}$  of recombinant CFP10:ESAT6 complex for 0, 15, 30, 60 and 120 minutes; cytoplasmic and nuclear extracts were run on gel and probed with anti-phospho-ERK1/2 antibody. (E) phosphorylation of ERK1/2 in cytoplasm. (G) phosphorylation of ERK1/2 in nucleus. (F) and (H) Total ERK1/2 in the cytoplasmic and nuclear extracts respectively at different time points to confirm equal loading of samples in all the lanes.