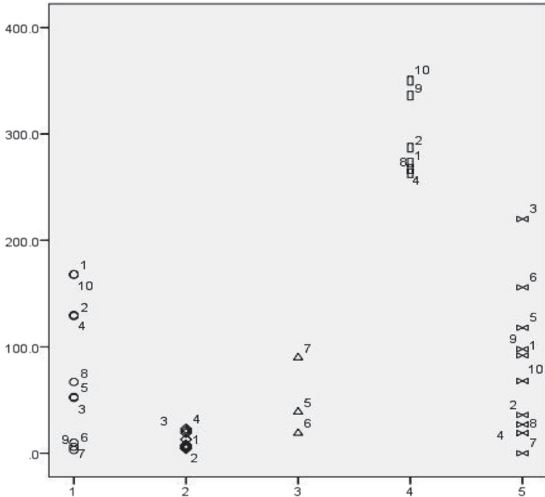


Forced Swim Test

Float Time (s)



Groups

FST Groups

- 1 - 1.5 M MRL/pr
- ◇ 2 - 1.5 M MRL/mp
- △ 3 - 4 M MRL/pr with Low Float Time
- 4 - 4 M MRL/pr with High Float Time
- ▽ 5 - 4 M MRL/mp