

Supplemental figures for:

Extracellular signal-regulated kinase 1/2 is required for complement component C1q and fibronectin dependent enhancement of Fc γ - receptor mediated phagocytosis in mouse and human cells

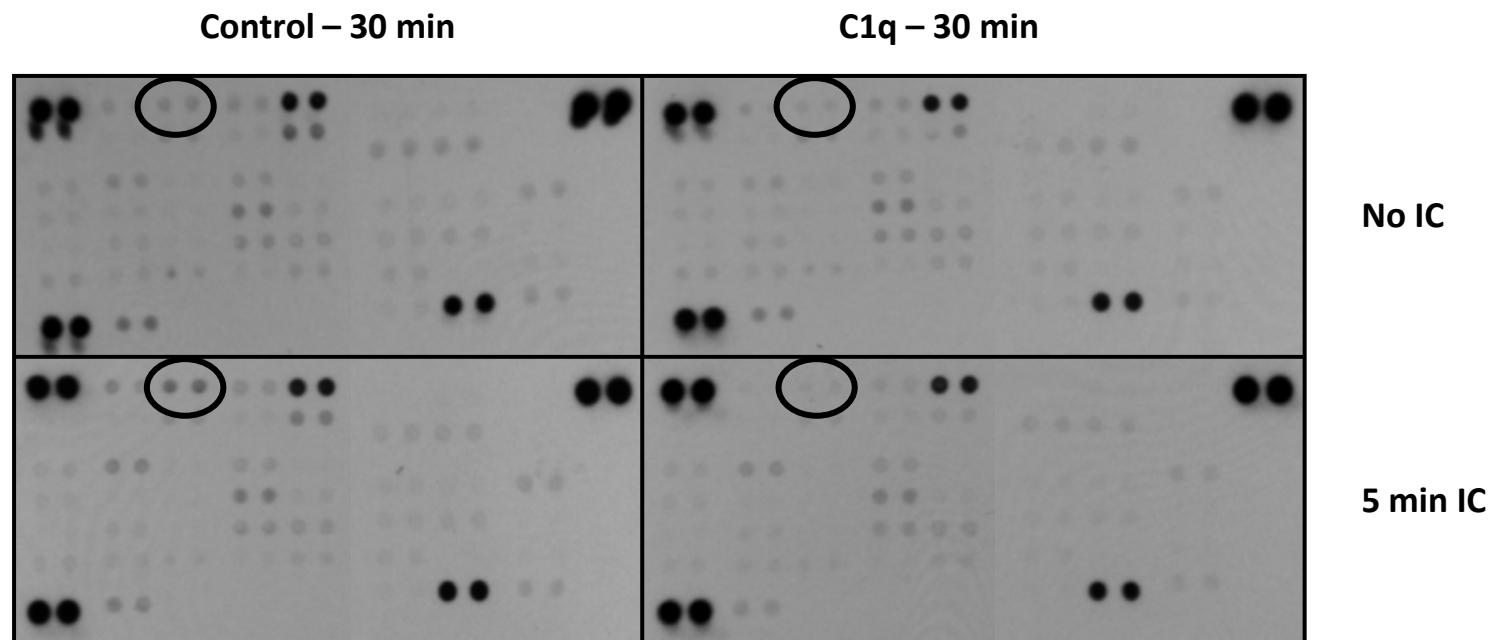
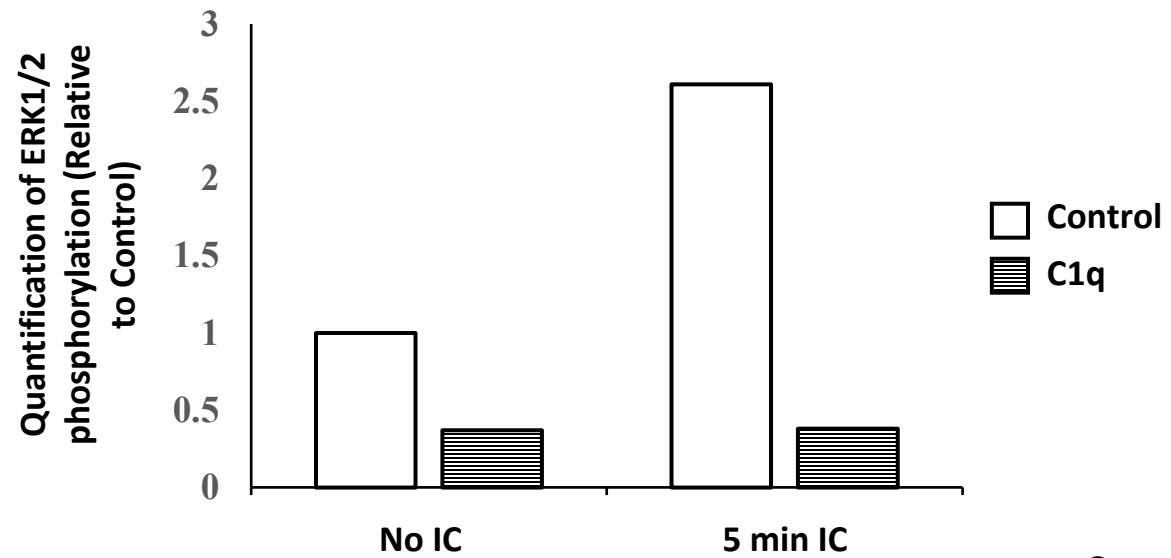
¹Willmann, Emily A., ¹Pandurovic, Vesna, ¹Jokinen, Anna, ¹Beckley, Danielle, and ^{2*}Bohlson, Suzanne S. ¹Department of Microbiology and Immunology, Des Moines University, IA, USA

²Department of Molecular Biology and Biochemistry, University of California, Irvine, CA, USA.

Figure Legends

Supplemental Figure 1. Alteration in ERK1/2 phosphorylation by C1q was detected from a phospho-kinase array. BMDM were adhered to 4 μ g/mL HSA (control) or C1q for 30 min, then incubated with BSA-anti-BSA immune complexes (IC) for an additional 0 min or 5 min. After the indicated time, cells were lysed and phosphorylation of 43 different proteins in duplicate were detected by the phospho-kinase array and analyzed using ImageJ. (A) Image of the phospho-kinase array with p-ERK1/2 circled in black. (B) Quantification of p-ERK1/2 from the array in (A). Bars represent the average of the duplicate samples.

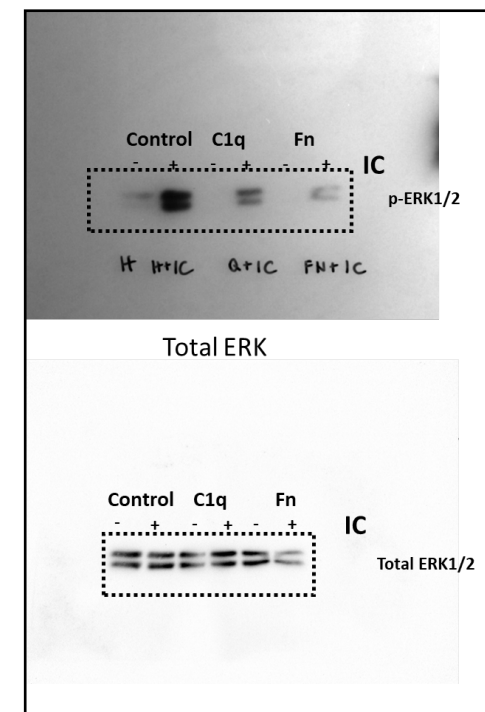
Supplementary Figure 2. Uncropped full-length blots are included for figures 3 (A and B), 5 (C) and 6 (D). The area that is cropped is indicated by the dashed box.

A.**B.**

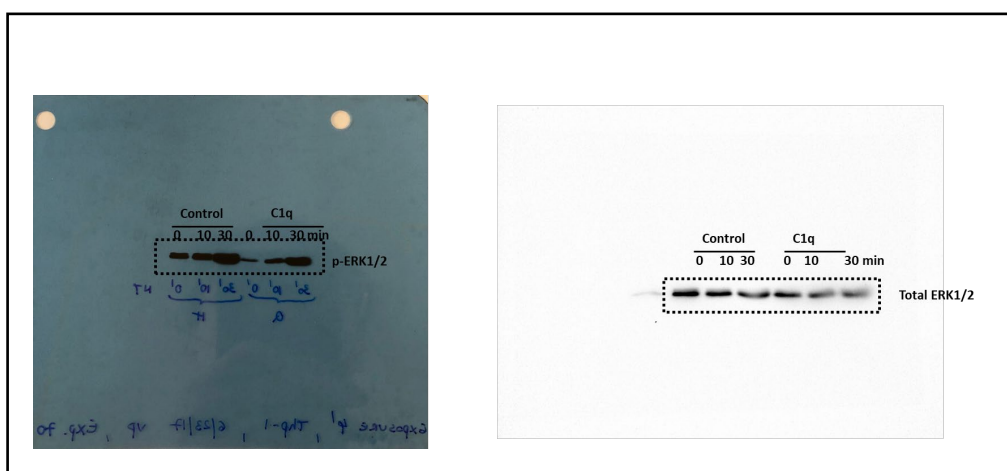
A



C



B



D

