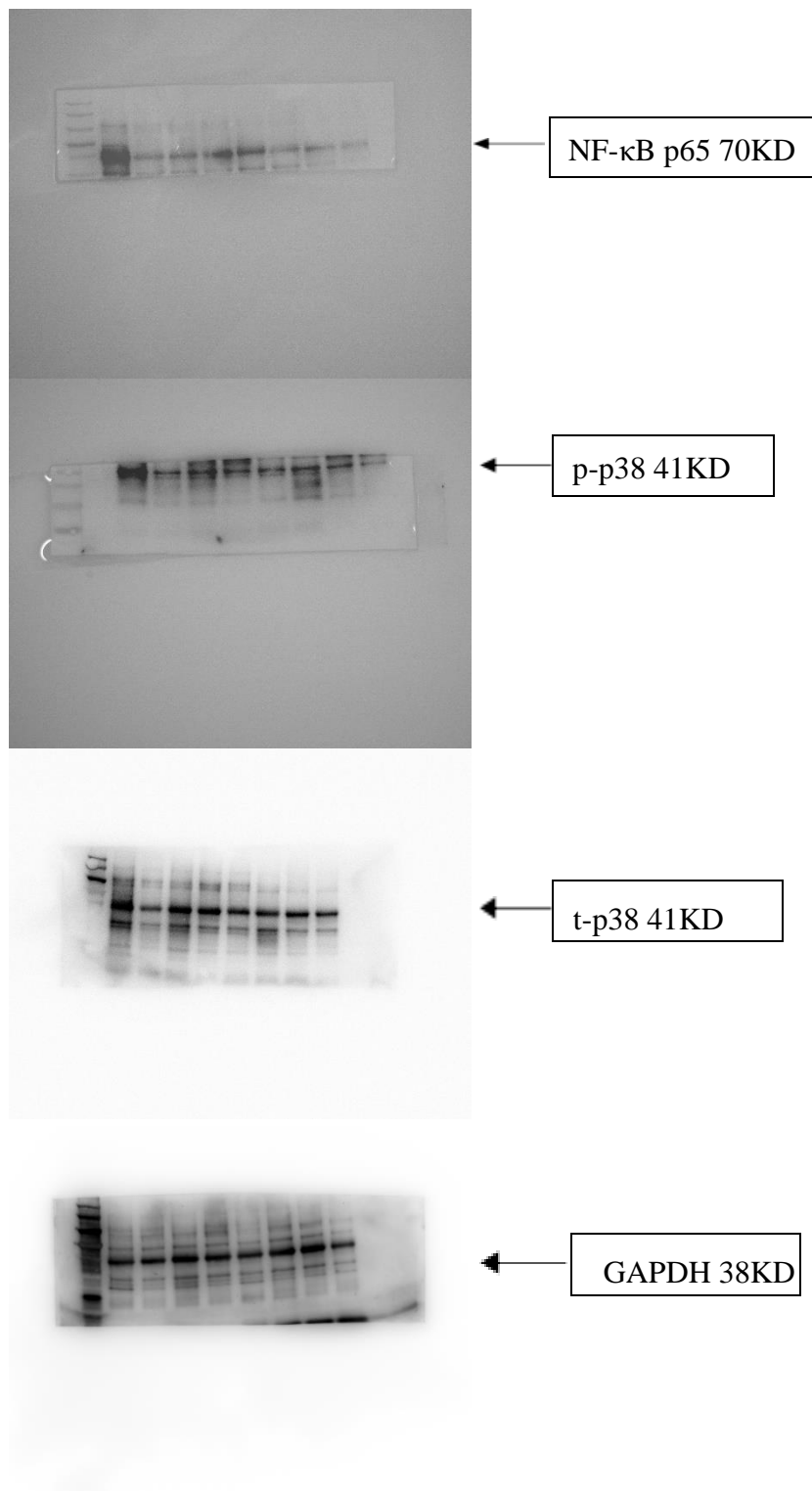
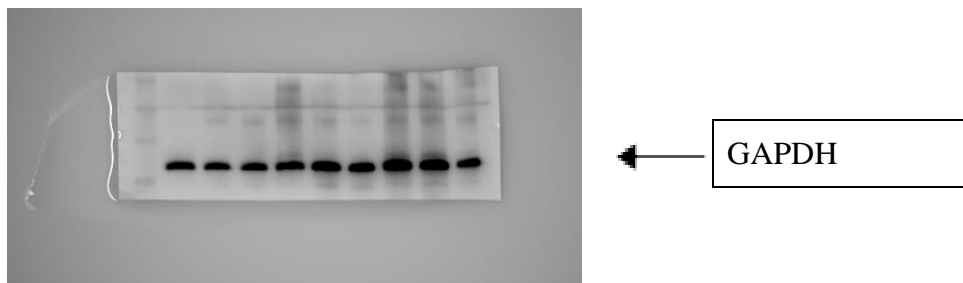


Supplementary material 1: The full-length blots above are supplements of Figure 6A.

Because of the limited space, the membrane edges on both sides cannot be saved, or the full-length blots would be missed. To demonstrate the authenticity of the first GAPDH blot, which is the original images of the cropped blots in Figure 6A, we added two other replicates of GAPDH. The lanes from left to right are the groups of blank, normal-IgG, ANCA-IgG, ANCA+S100A8/A9(1ug/ml), ANCA+S100A8/A9(5ug/ml), ANCA+S100A8/A9(10ug/ml), ANCA+S100A12(1ug/ml), ANCA+S100A12(5ug/ml), ANCA+S100A12(10ug/ml) respectively.

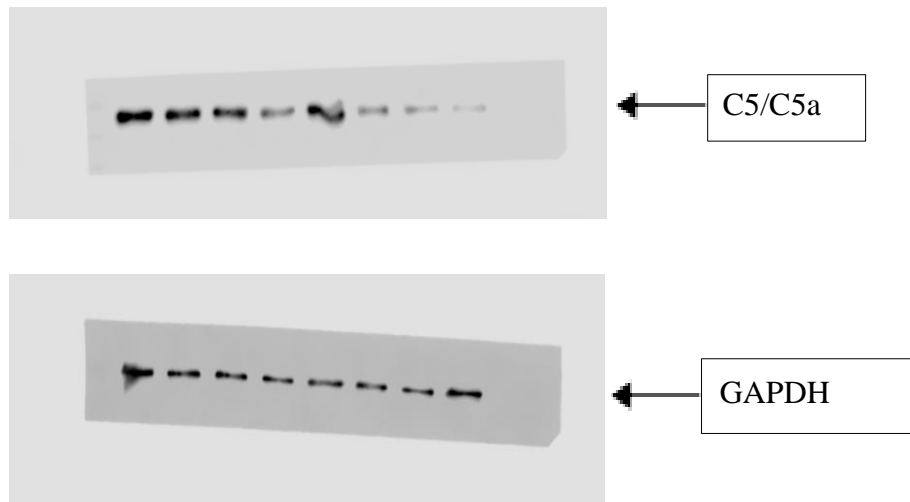


Supplementary material 2: The full-length blots above are supplements of Figure 6D. The last eight lanes from left to right are the groups of ANCA+S100A8/A9(5ug/ml), ANCA+S100A8/A9(5ug/ml)+TLR4, ANCA+S100A8/A9(5ug/ml)+RAGE, ANCA+S100A8/A9(5ug/ml)+TLR4+RAGE, ANCA+S100A12(1ug/ml), ANCA+S100A12(1ug/ml)+TLR4, ANCA+S100A12(1ug/ml)+RAGE, ANCA+S100A12(1ug/ml)+TLR4+RAGE respectively.



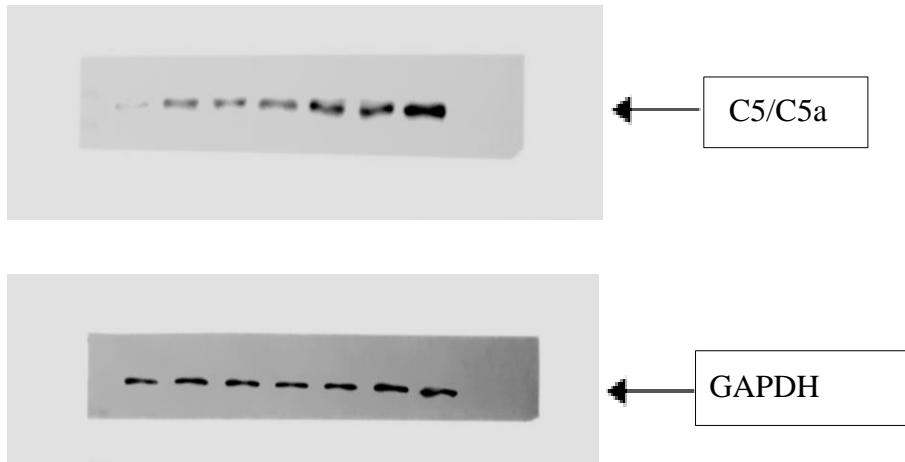
Supplementary material 3: The full-length blots above are supplements of Figure S3A.

To demonstrate the authenticity of the first GAPDH blot, which is the original images of the cropped blots in Figure S3A, we added two other replicates of GAPDH. The lanes from left to right are the groups of blank, normal-IgG, ANCA-IgG, ANCA+S100A8/A9(1ug/ml), ANCA+S100A8/A9(5ug/ml), ANCA+S100A8/A9(10ug/ml), ANCA+S100A12(1ug/ml), ANCA+S100A12(5ug/ml), ANCA+S100A12(10ug/ml) respectively.



Supplementary material 4: The full-length blots above are supplements of Figure S3B.

The lanes from left to right are the groups ANCA+S100A8/A9(5ug/ml), ANCA+S100A8/A9(5ug/ml)+TLR4, ANCA+S100A8/A9(5ug/ml)+RAGE, ANCA+S100A8/A9(5ug/ml)+TLR4+RAGE, ANCA+S100A12(1ug/ml), ANCA+S100A12(1ug/ml)+TLR4, ANCA+S100A12(1ug/ml)+RAGE, ANCA+S100A12(1ug/ml)+TLR4+RAGE respectively.



Supplementary material 5: The full-length blots above are supplements of Figure S5E.

The lanes from left to right are the groups of blank, normal-IgG (150ug/ml), normal-IgG (500ug/ml), normal-IgG (1mg/ml), ANCA-IgG (150ug/ml), ANCA-IgG (500ug/ml), ANCA-IgG (1mg/ml) respectively.