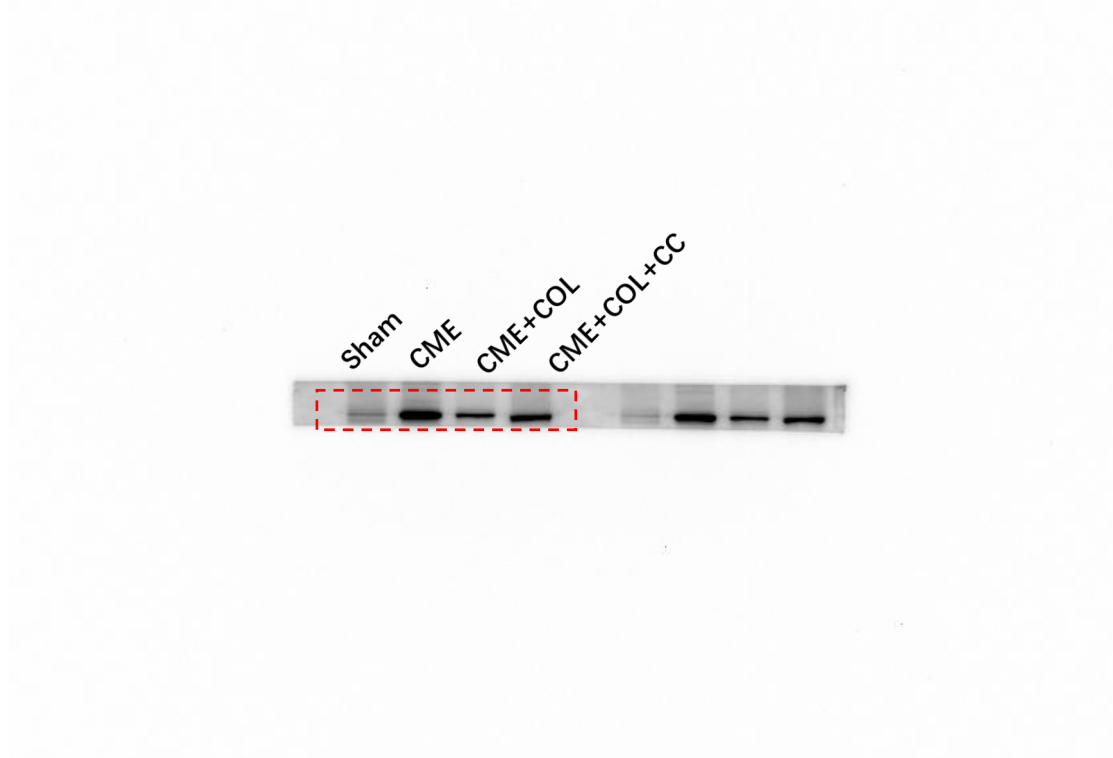


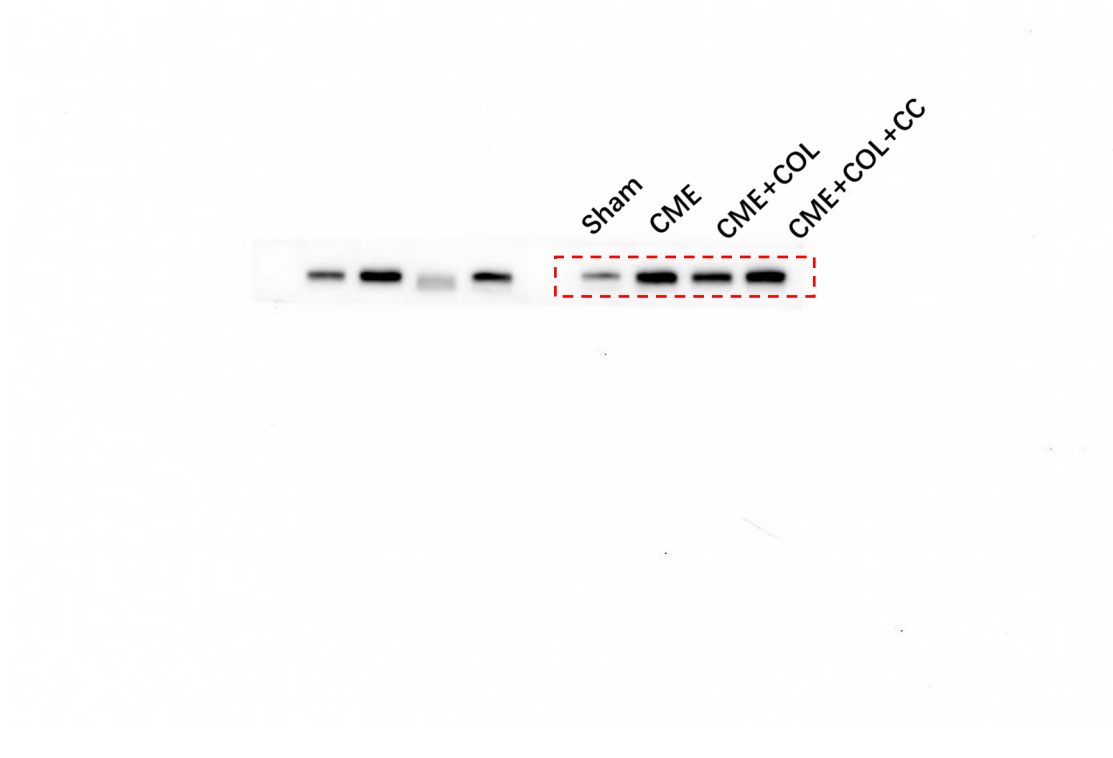
The original images of the representative western blot bands in

Fig.3B

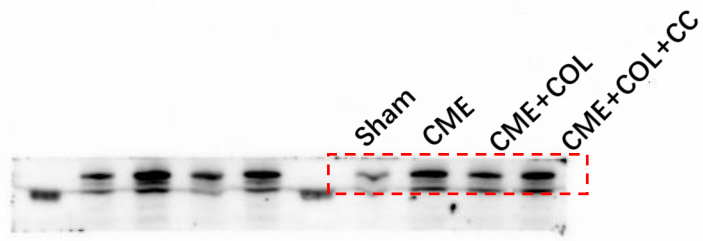
NLRP3



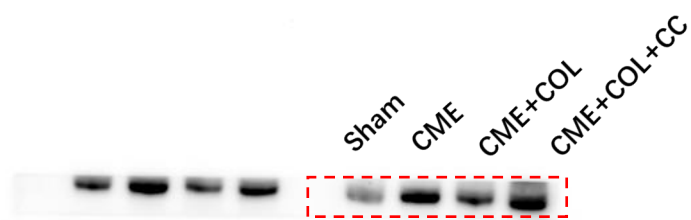
GSDMD-N



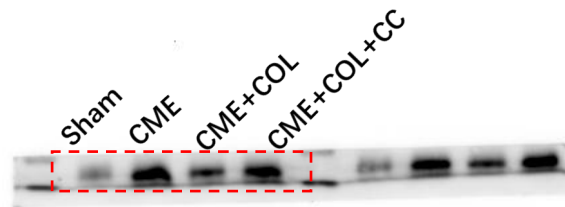
ASC



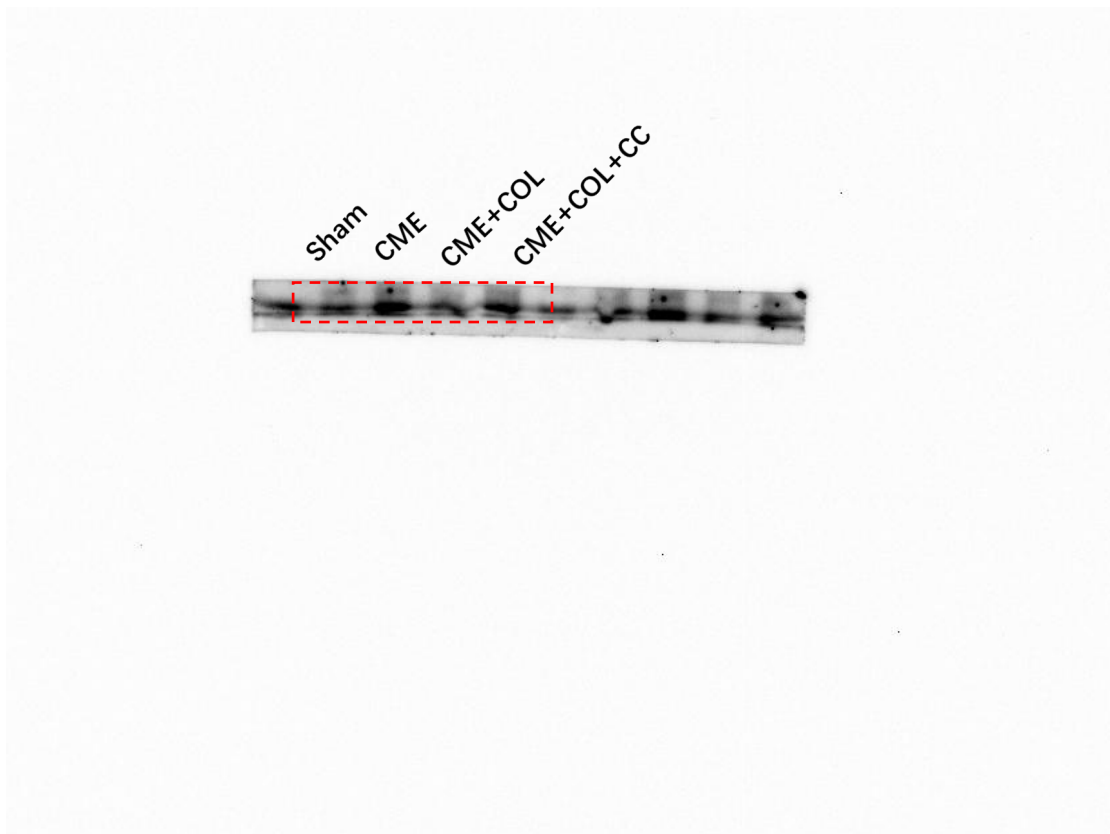
IL-18



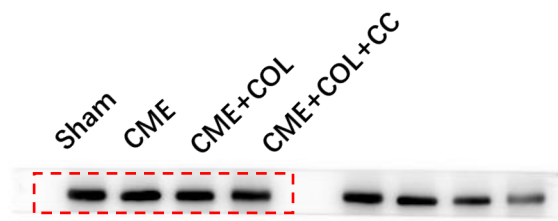
Caspase-1 p20



IL-1 β



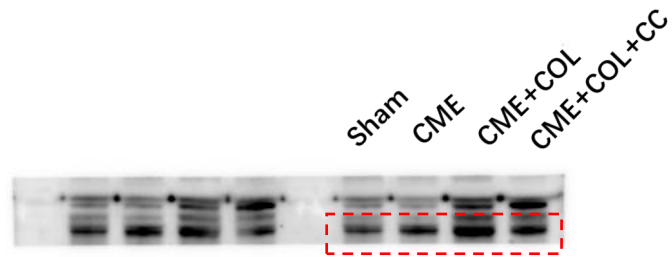
GAPDH



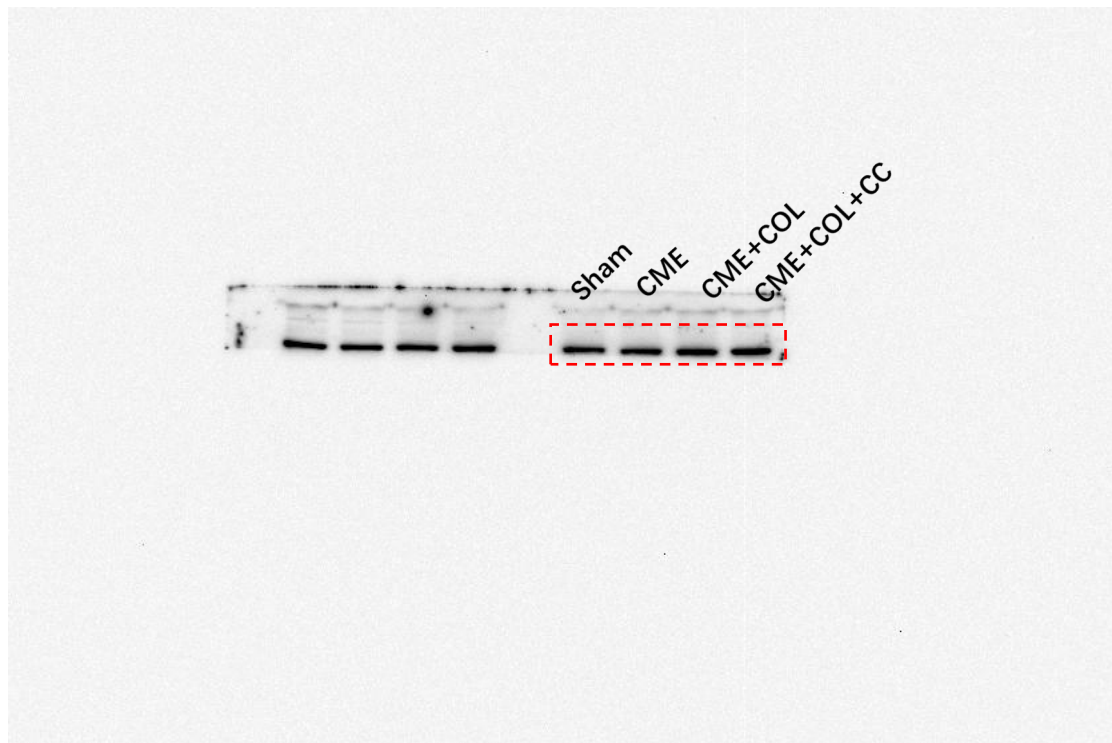
The original images of the representative western blot bands in

Fig.5A

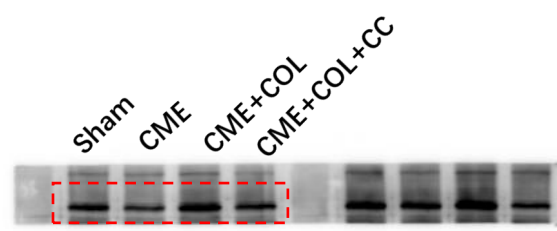
P-AMPK



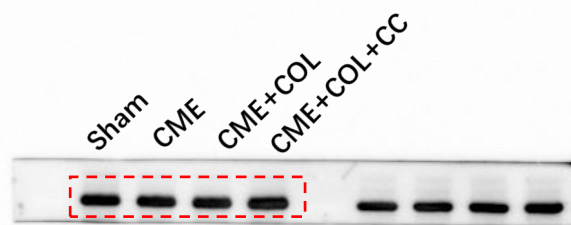
AMPK



SIRT1



GAPDH



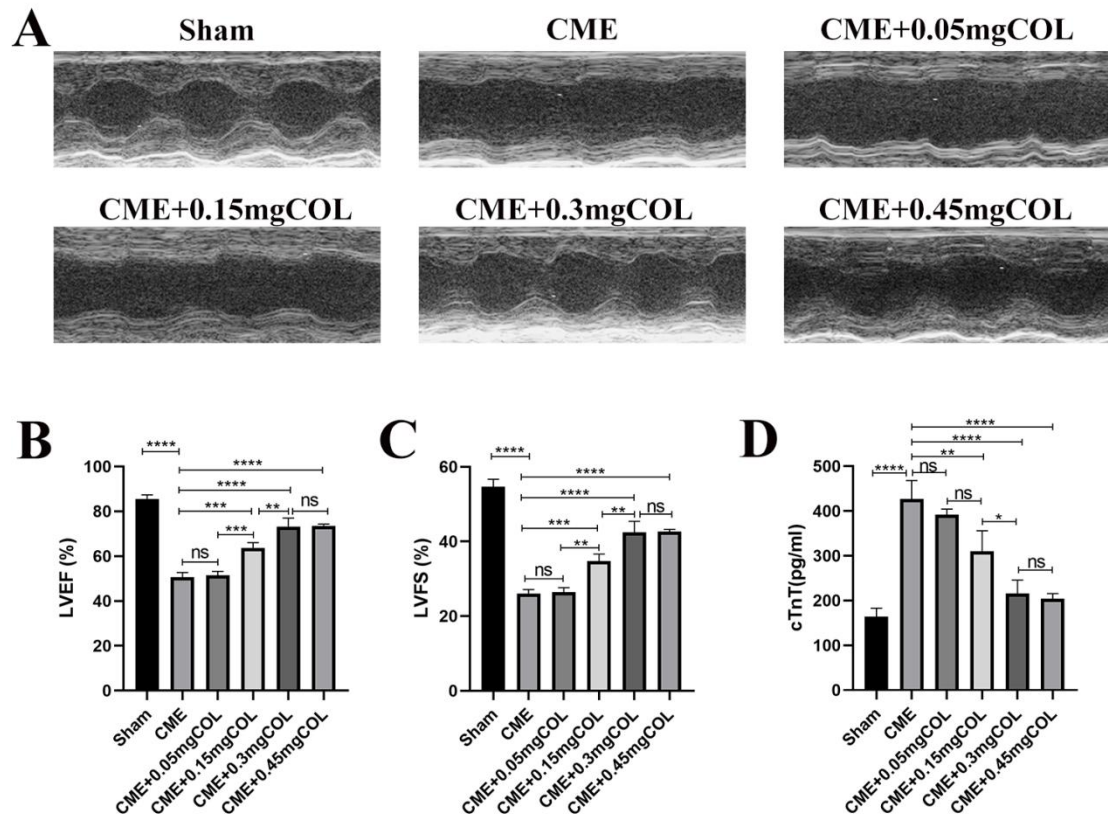


Figure S1. Effects of different doses of colchicine on cardiac function and myocardial injury induced by coronary microembolization in rats. (A) The representative echocardiography in each group. (B-C) The measurement results of left ventricular ejection fraction (LVEF) and left ventricular fractional shortening (LVFS) (n=3 per group). (D) The levels of serum cTnT in each group (n=3). *p < 0.05, **p < 0.01, ***p < 0.001, ****p < 0.0001, ns=no significance.