

RESEARCH

Additional file 5: Supplementary figures

Andrei S Morgan^{1*}, Neil Marlow¹, Kate Costeloe² and Elizabeth S Draper³

*Correspondence:

andrei.morgan@ucl.ac.uk

¹Institute for Womens' Health,
UCL, 74 Huntley Street, London,
UK

Full list of author information is
available at the end of the article

Author details

¹Institute for Womens' Health, UCL, 74 Huntley Street, London, UK. ² Homerton Hospital, London, UK. ³ University of Leicester, Leicester, UK.

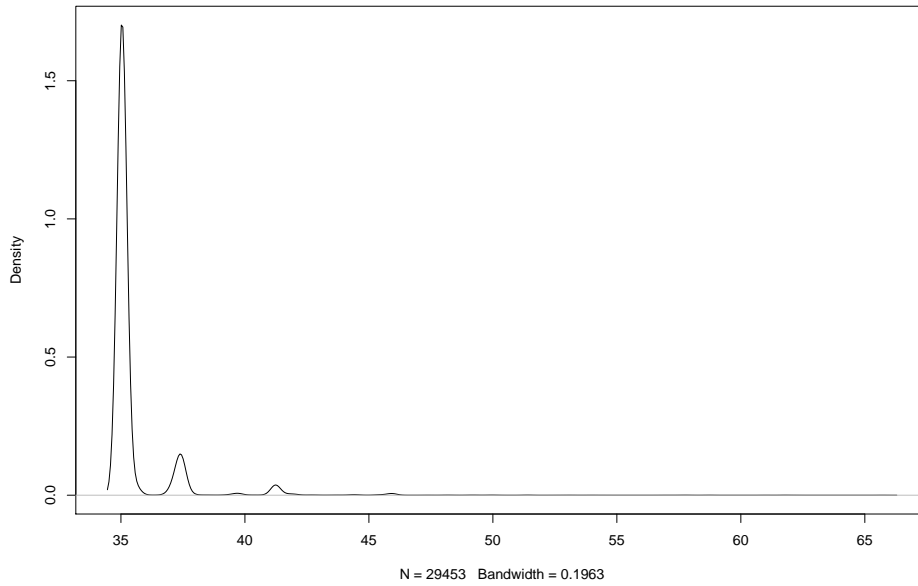
References

1. Dattani, N., Datta-Nemdharry, P., Macfarlane, A.: Linking maternity data for England, 2005-06: methods and data quality. *Health Statistics Quarterly / Office for National Statistics* **49**(1), 53–79 (2011). doi:[10.1057/hsq.2011.3](https://doi.org/10.1057/hsq.2011.3)
2. Borg, A., Sariyar, M.: Package "RecordLinkage". (2012). <https://r-forge.r-project.org/projects/recordlinkage/>
3. Contiero, P., Tittarelli, A., Tagliabue, G., Maghini, A., Fabiano, S., Crosignani, P., Tessandori, R.: The EpiLink record linkage software: presentation and results of linkage test on cancer registry files. *Methods of Information in Medicine* **44**(1), 66–71 (2005). doi:[10.1267/METH05010066](https://doi.org/10.1267/METH05010066)

Figure S1: Density distribution of weights – stochastic linkage (Dattani estimates)

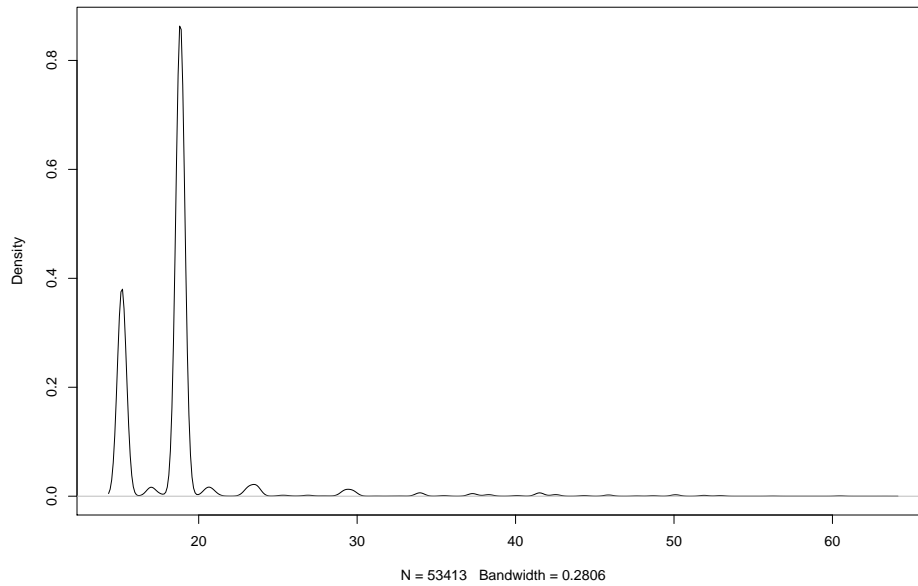
(a) 1995 baseline best guesses

Density plot 'fs.F' of weights from the Fellegi Sunter method for matching pairs from EPICure and HES datasets for the year 1995



(b) 2006 baseline best guesses

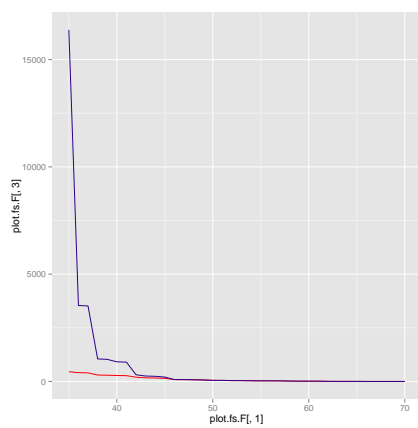
'fs.F' density plot of weights from the Fellegi Sunter method for matching pairs from EPICure and HES datasets for the year 2006



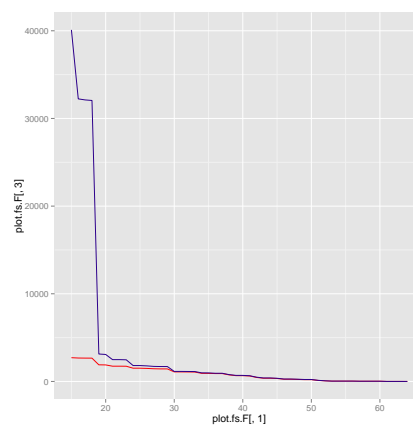
Density distribution of weights from the stochastic linkage analyses using probabilities based on Dattani et al. [1] Axes are not to the same scale.

Figure S2: Individual matches according to weight – stochastic analysis (Dattani estimates)

(a) 1995



(b) 2006

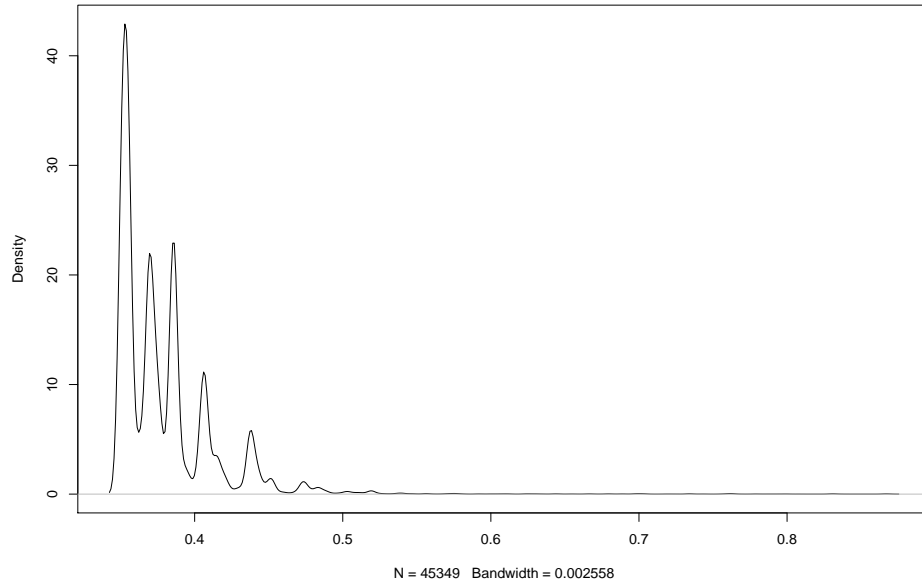


Numbers of individual matches according to weight from each of the Hospital Episode Statistics (HES) (blue line) and EPICure (red line) data sets in the stochastic linkage analysis using probabilities based on Dattani et al.[1] “Weight” is on the x -axis, number of matches on the y -axis; axes are not to the same scale.

Figure S3: Density distribution of weights – EpiLink algorithm

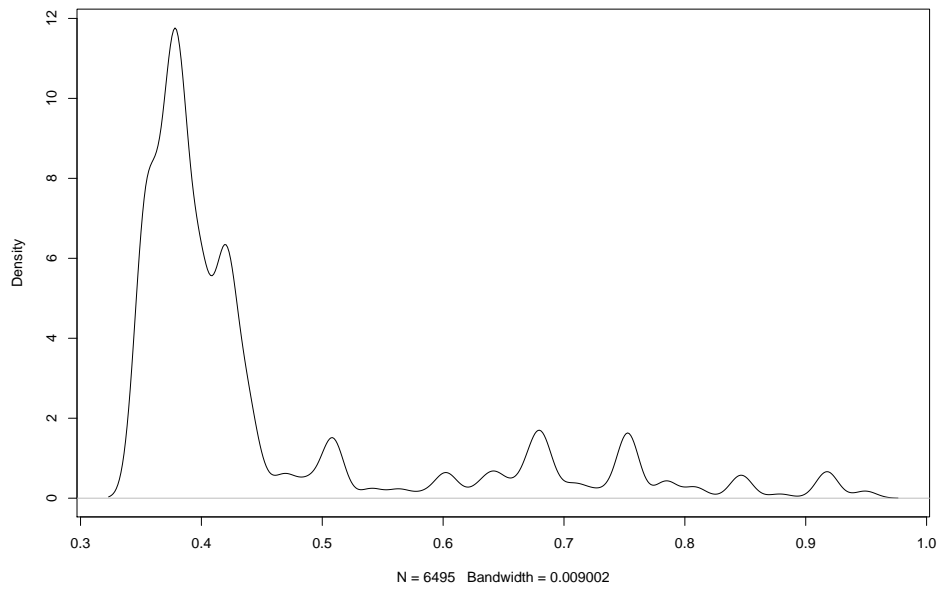
(a) 1995

Density plot 'epi.C' of weights for matching pairs from EPICure and HES datasets for the year 1995 obtained using the Contiero algorithm.



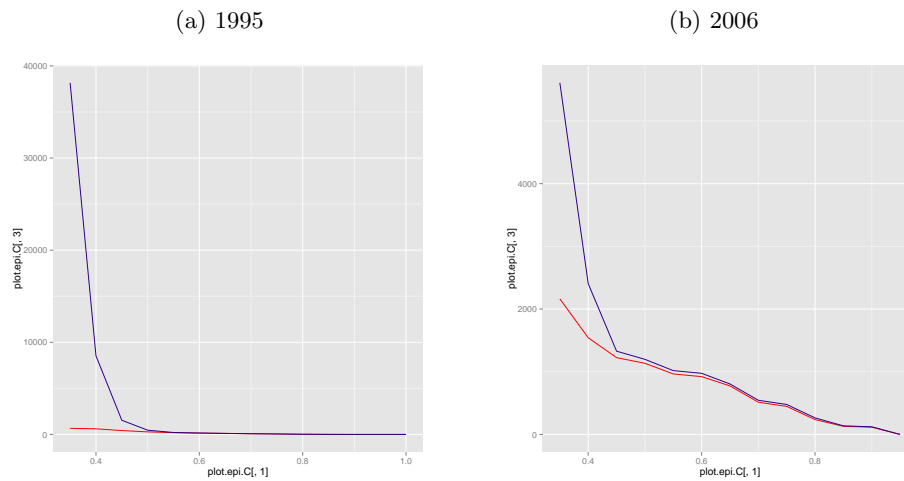
(b) 2006

Density plot 'epi.C' of weights for matching pairs from EPICure and HES datasets for the year 1995 obtained using the Contiero algorithm.



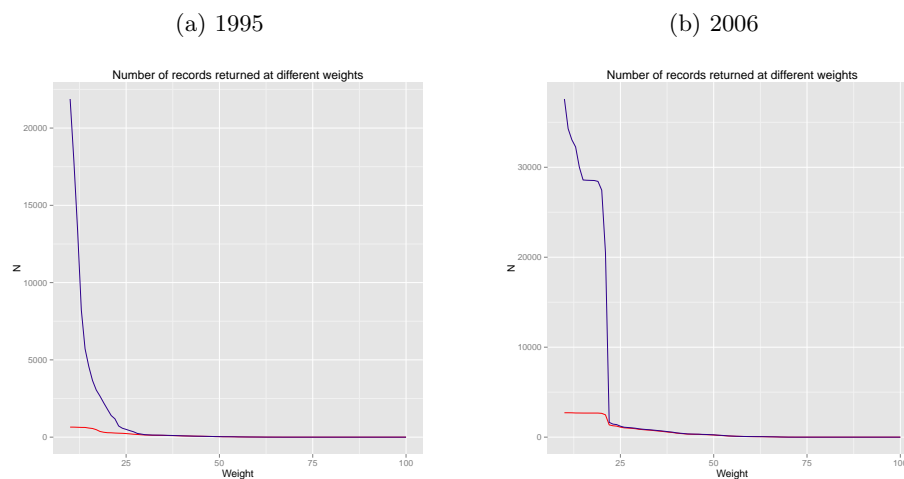
Density distribution of weights from the linkage analyse using Contiero's EpiLink algorithm.[2, 3] Axes are not to the same scale.

Figure S4: Individual matches according to weight – EpiLink algorithm



Numbers of individual matches according to weight from each of the Hospital Episode Statistics (HES) (blue line) and EPICure (red line) data sets in the linkage analysis performed using Contiero’s EpiLink algorithm.^[2, 3] “Weight” is on the x -axis, number of matches on the y -axis; axes are not to the same scale.

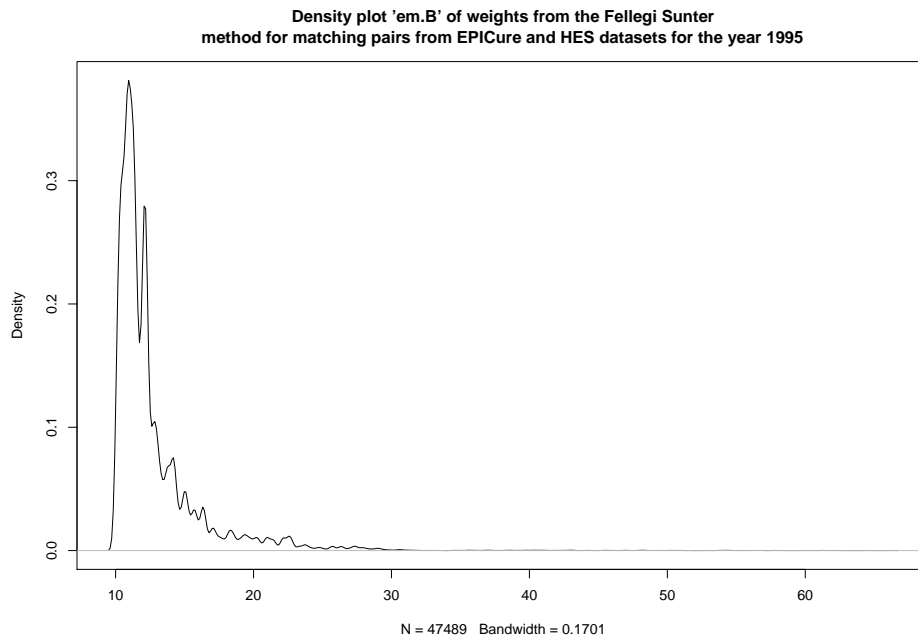
Figure S5: Individual matches according to weight – estimation-maximisation algorithm



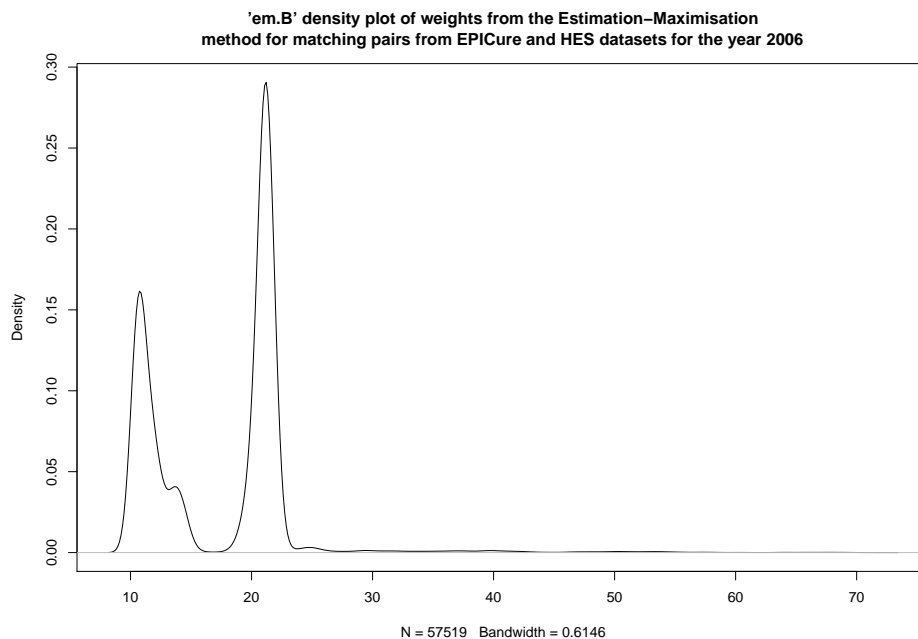
Numbers of individual matches according to weight from each of the Hospital Episode Statistics (HES) (blue line) and EPICure (red line) data sets in the linkage analysis based on the estimation-maximisation algorithm. “Weight” is on the x -axis, number of matches on the y -axis; axes are not all to the same scale.

Figure S6: Density distribution of weights – estimation-maximisation algorithm

(a) 1995 baseline best guesses (Note: this graph is mistakenly labelled “Fellegi Sunter”; it is actually from the estimation-maximisation analysis.



(b) 2006 baseline best guesses



Density distribution of weights from the linkage analyses using the estimation-maximisation algorithm