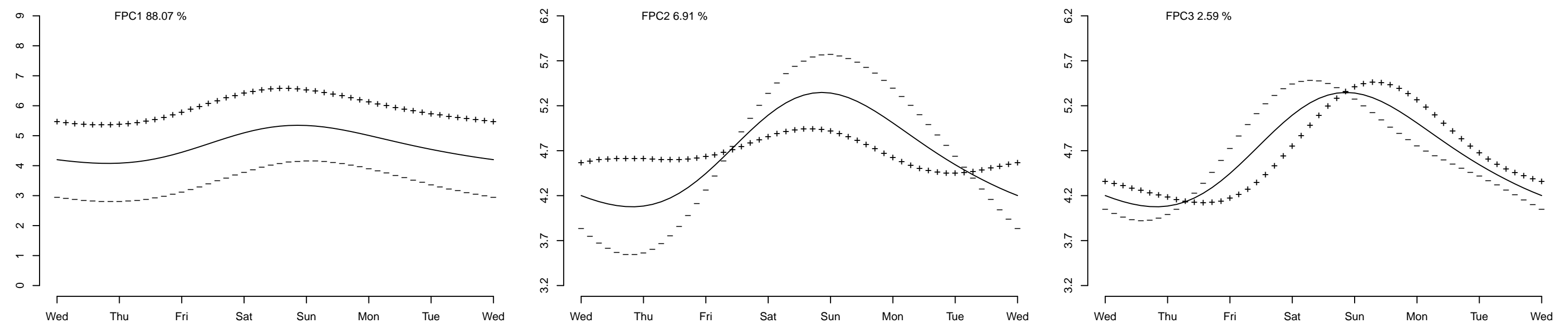
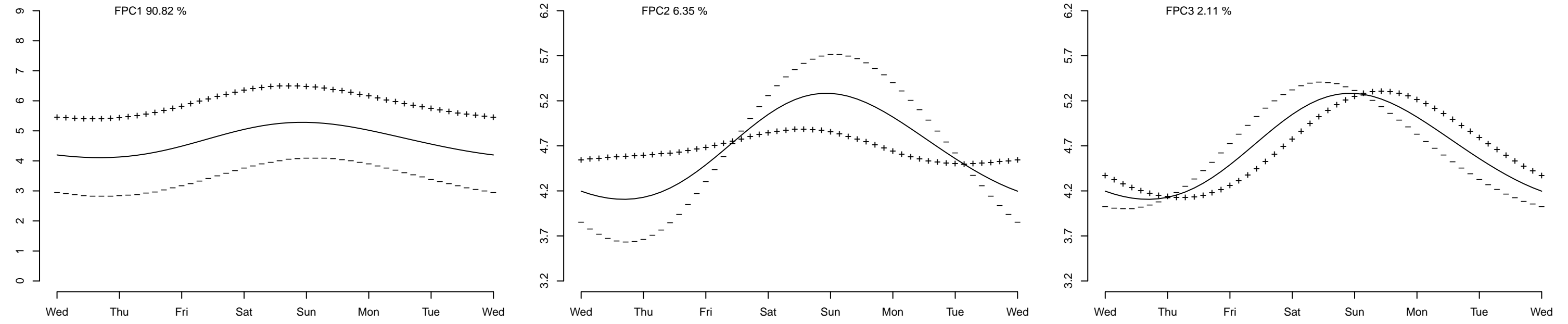
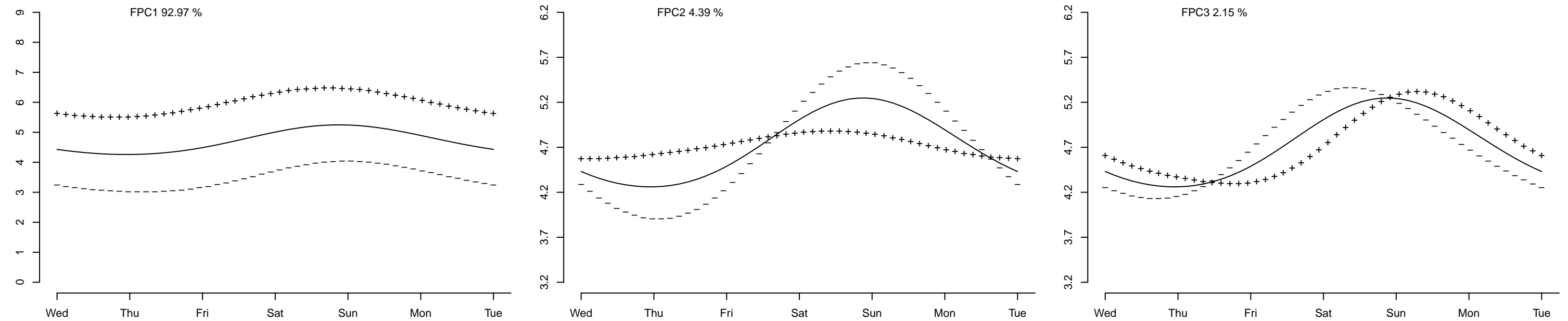
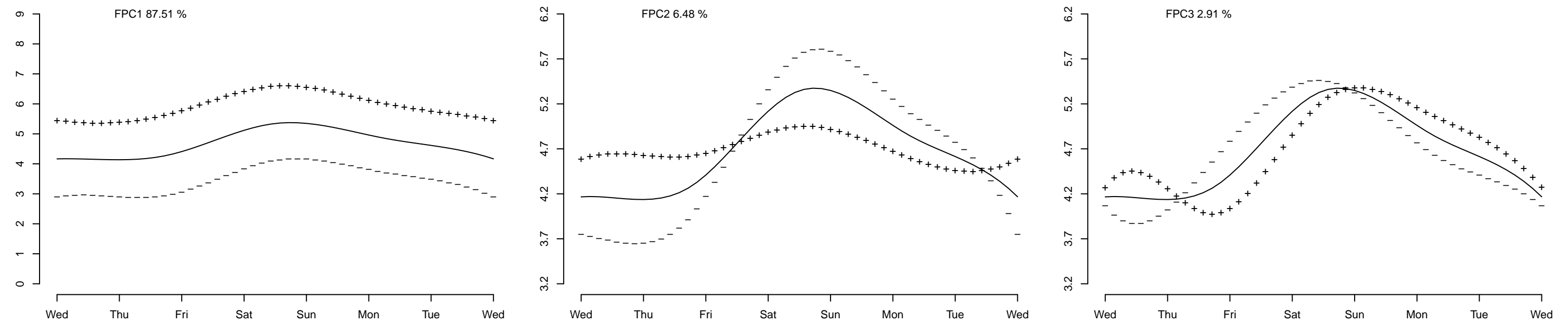
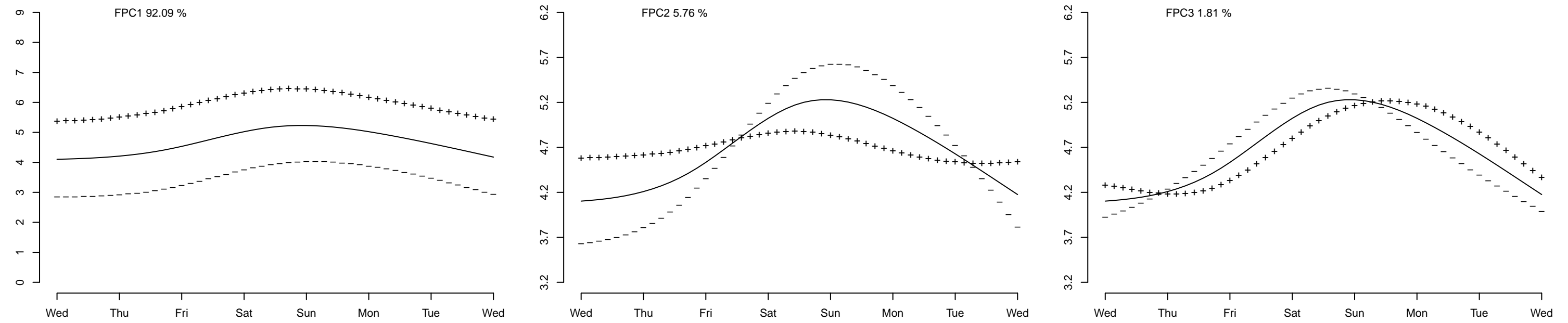


(A) Functional principal component analysis using Fourier basis functions with no smoothing**(B) Functional principal component analysis using Fourier basis functions with common-optimal smoothing****(C) Functional principal component analysis using Fourier basis functions with individual-optimal smoothing****(D) Functional principal component analysis using B-spline basis functions with no smoothing****(E) Functional principal component analysis using B-spline basis functions with common-optimal smoothing****(F) Functional principal component analysis using B-spline basis functions with individual-optimal smoothing**