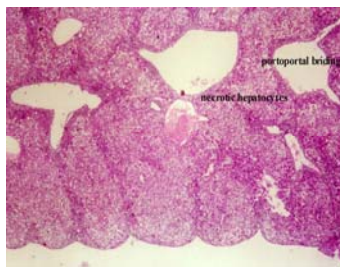
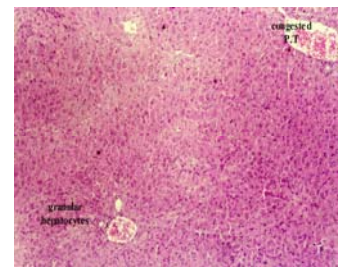


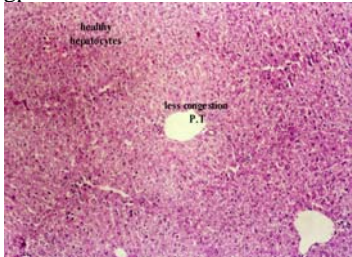
gp. I: Normal control



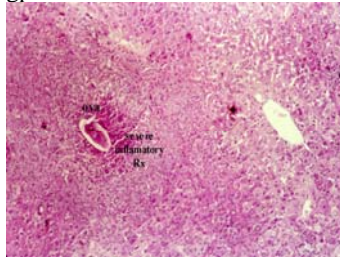
gp.II: TAA



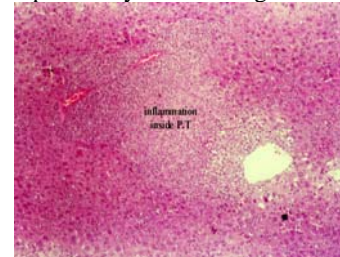
Gp. III: Silymarin during TAA



gp IV: Silymarin after TAA



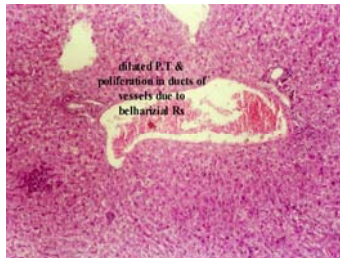
gp. V: *S.mansoni* infected mice.



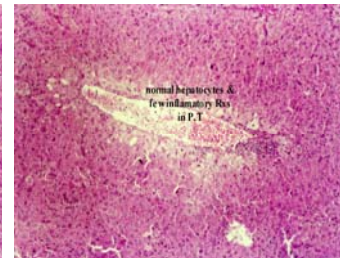
gp.VI: Praziquantel after Schistosomiasis



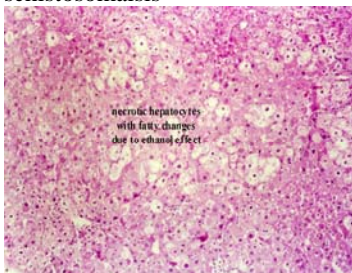
gp. VII: Silymarin during schistosomiasis



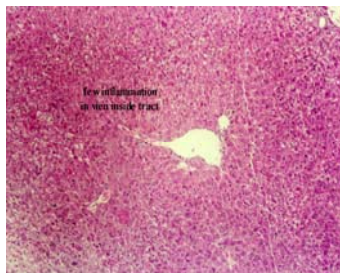
gp. VIII: Silymarin after schistosomiasis



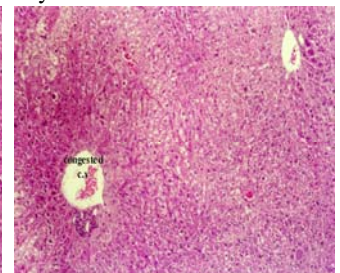
gp IX: Praziquantel and silymarin after chistosomiasis



gp X: Ethanol



gp XI: silymarin during ethanol .



gp XII: silymarin after ethanol