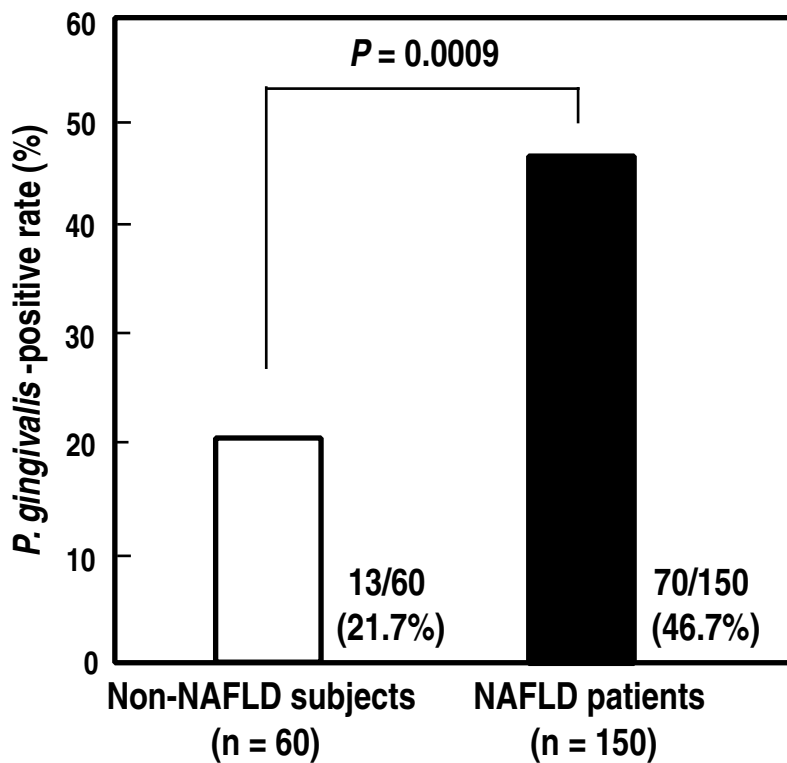
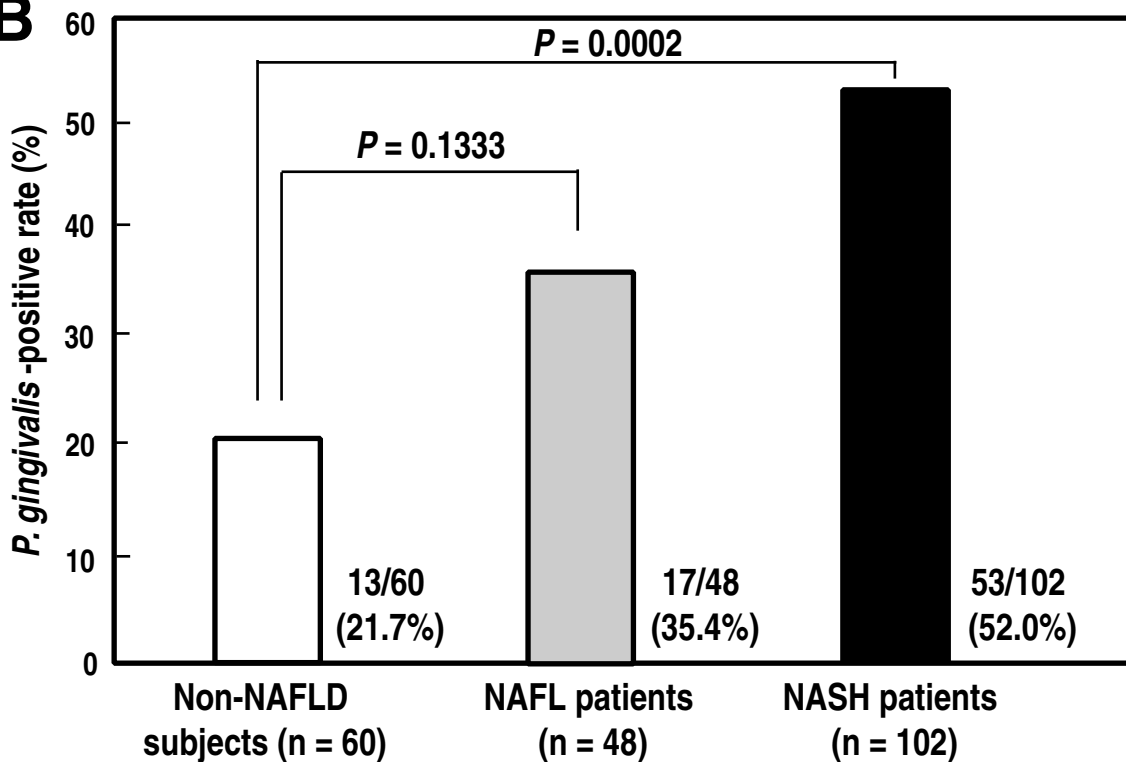


A

OR: 3.16
CI₉₅: 1.58-6.33

B

NASH vs. Non-NAFLD	OR: 3.91, CI ₉₅ : 1.89 - 8.09
NASH vs. NAFL	OR: 1.99, CI ₉₅ : 0.97 - 4.00
NAFL vs. Non-NAFLD	OR: 1.98, CI ₉₅ : 0.84 - 4.65