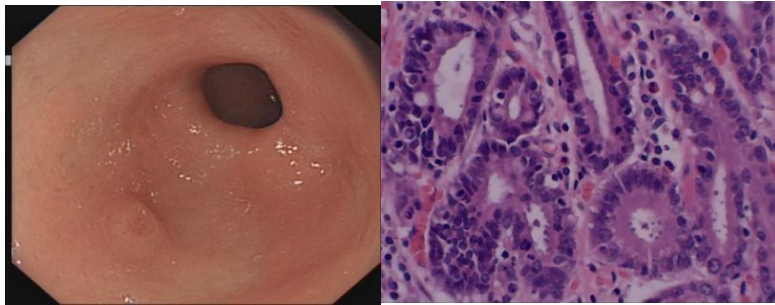
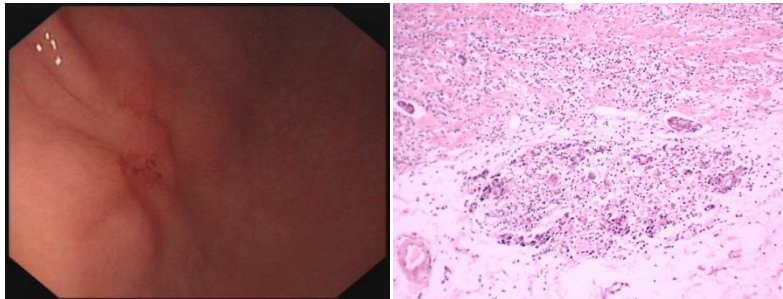


The data are representative endoscopic and histopathologic images of 16 patients diagnosed as early gastric cancer before MDT.

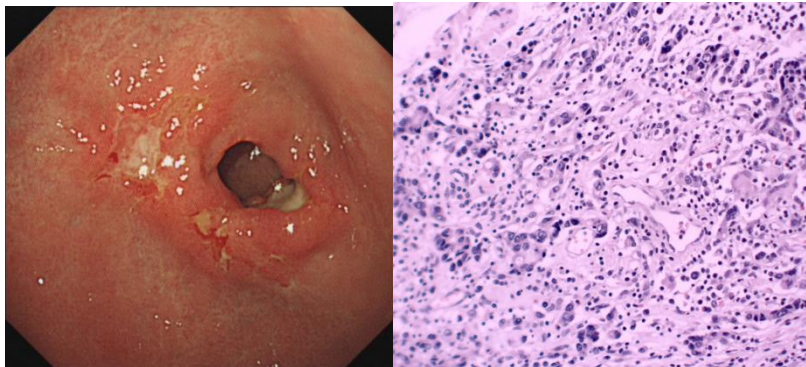
Case 1, female, 62y, 0-IIa+IIc, HGIN



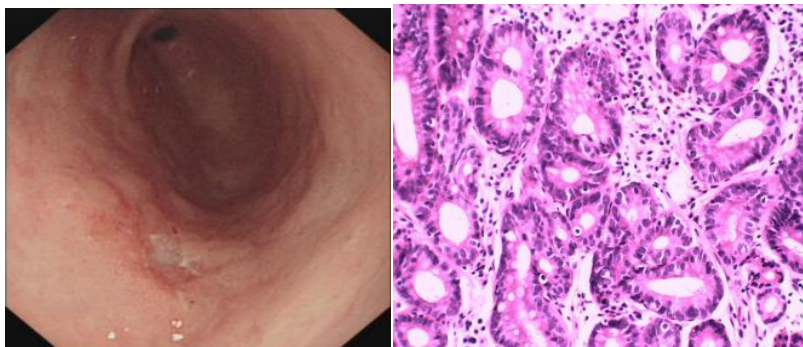
Case 2, female, 49y, 0-IIc, Por 1



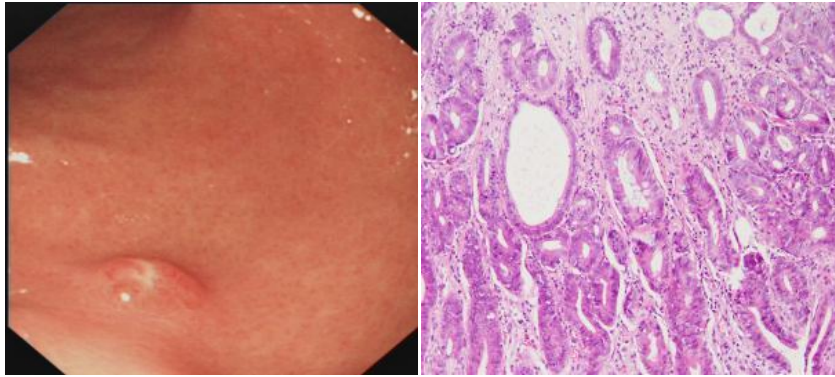
Case 3, male, 62y, 0-IIc, Por 1



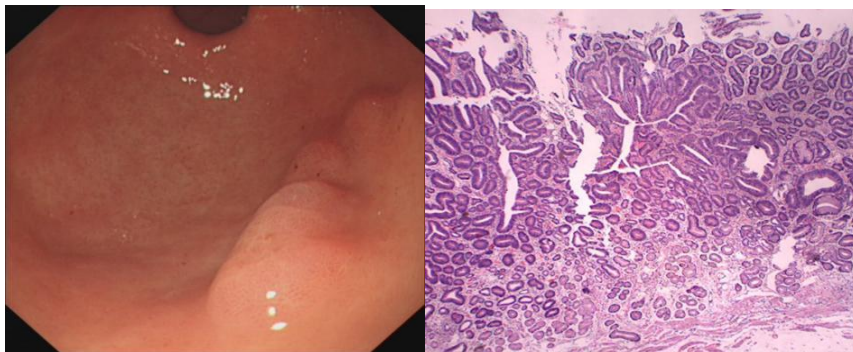
Case 4, female, 71y, 0-IIc, HGIN



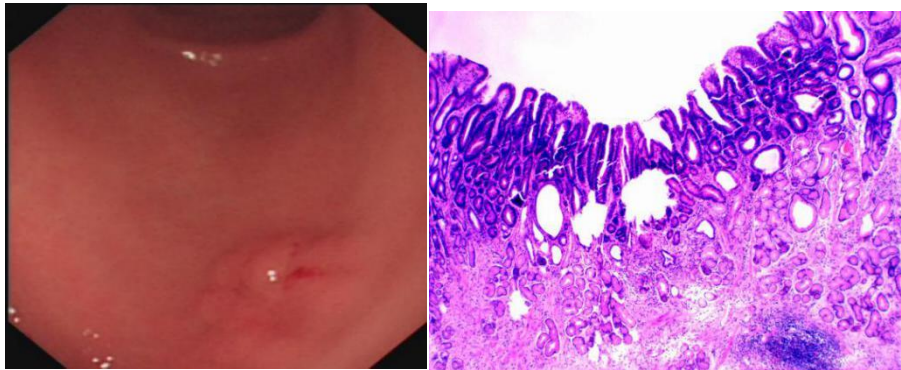
Case 5, male, 53y, 0-IIa+IIc, HGIN, Tub 1、 2



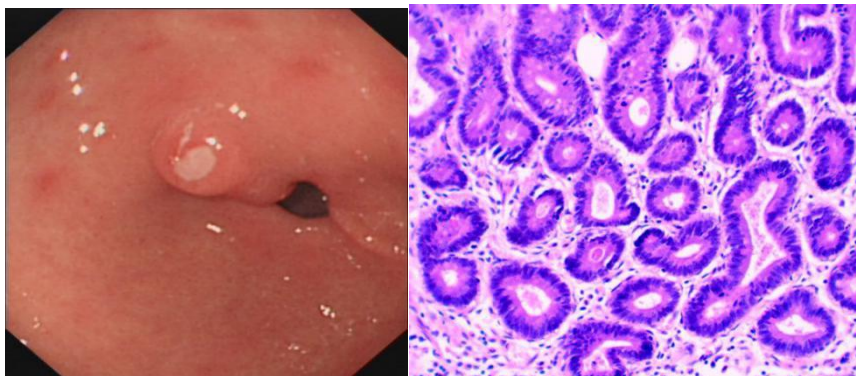
Case 6, female, 54y, 0-IIa, HGIN



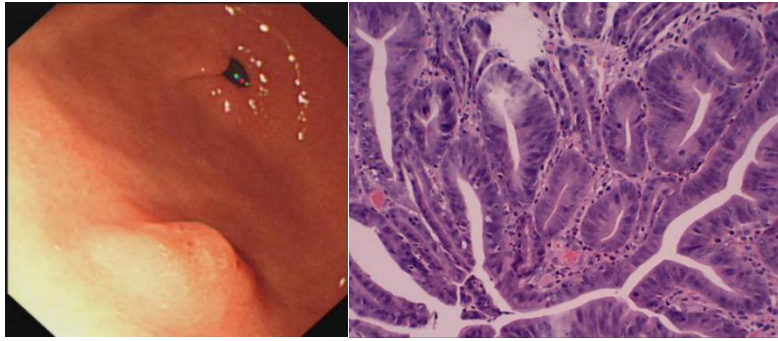
Case 7, male, 71y, 0-IIa, HGIN



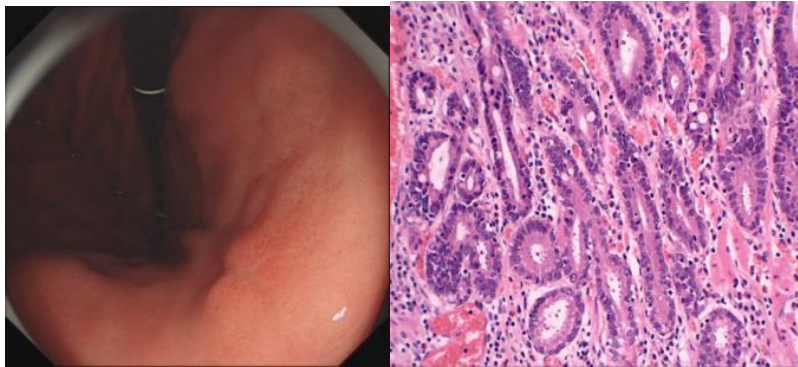
Case 8, male, 67y, 0-IIa+IIc, HGIN



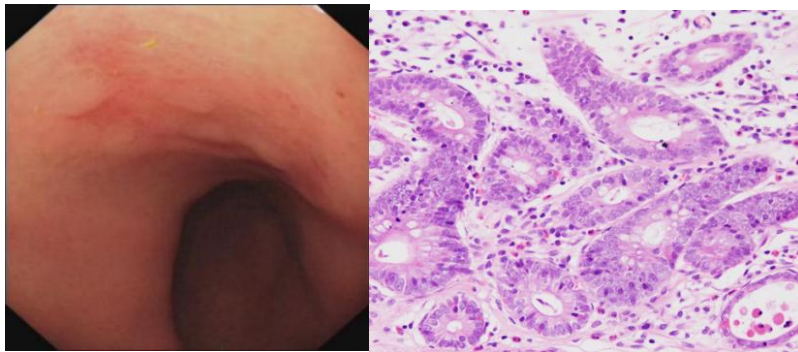
Case 9, male, 51y, 0-IIa+IIc, HGIN



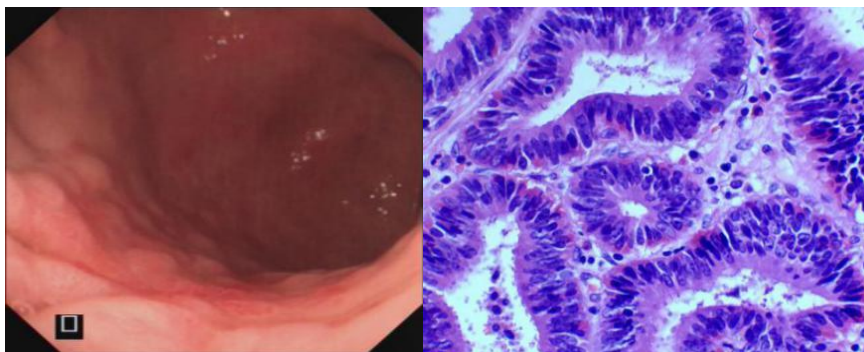
Case 10, female, 63y, 0-IIa+IIc, HGIN



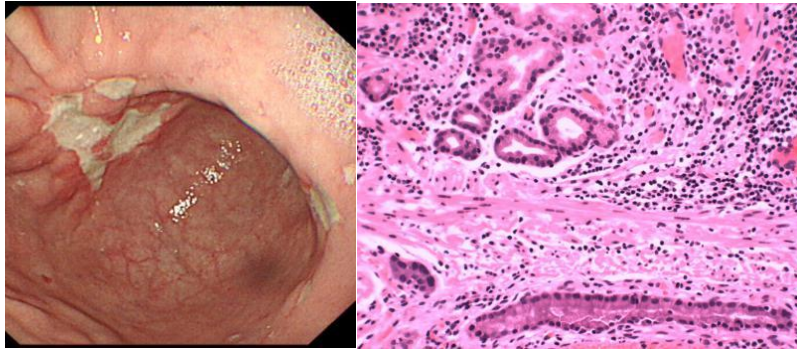
Case 11, female, 72y, 0-IIc, HGIN



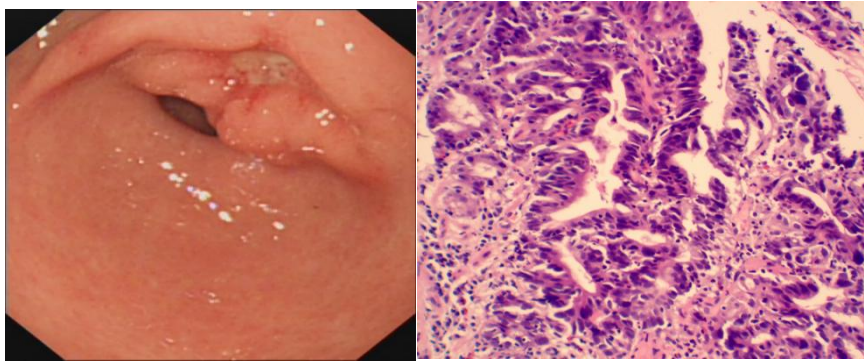
Case 12, male, 71y, 0-IIa+IIc, HGIN



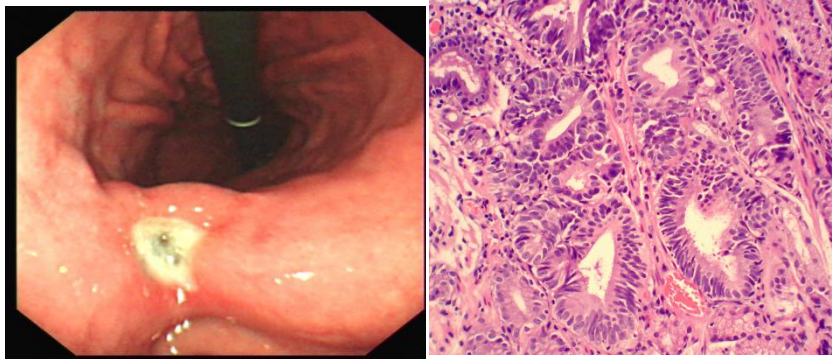
Case 13, female, 68y, 0-III, Tub1, 2



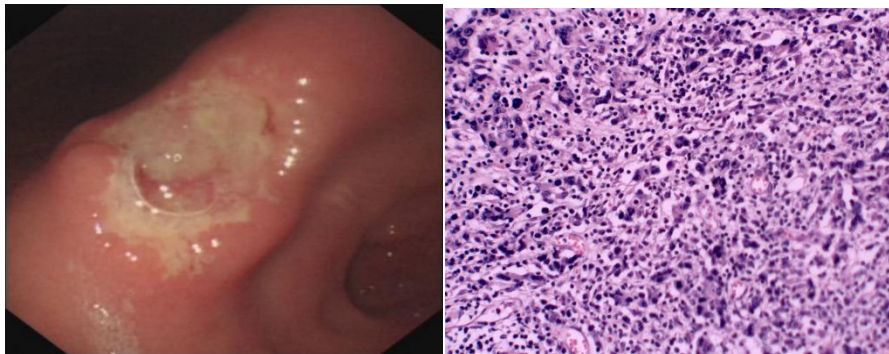
Case 14, male, 44y, 0-III ,Tub1, 2



Case 15,female,66y, 0-III, Tub1, 2



Case 16,male,59y, 0-III Por 1



Notes: EGC, early gastric cancer; HGIN, high-grade intraepithelial neoplasias; MDT, multi-disciplinary team; Por 1, poorly-differentiated adenocarcinoma; Sig, signet-ring cell carcinoma; Tub1, well-differentiated adenocarcinoma; Tub 2, moderately-differentiated adenocarcinoma.