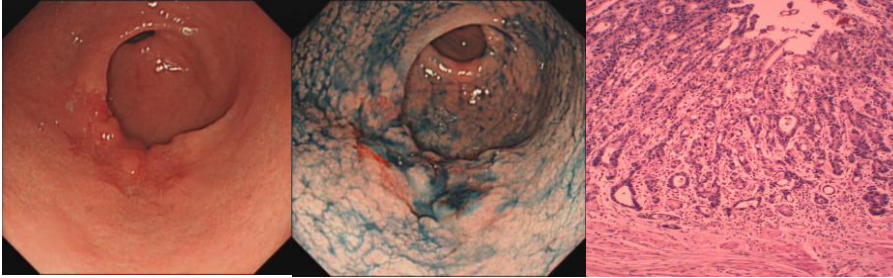
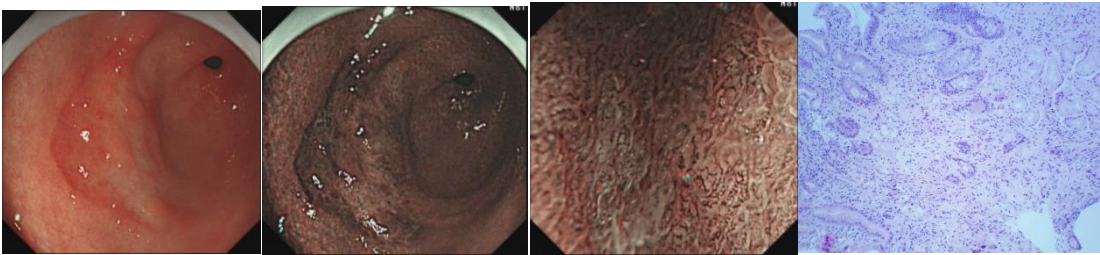


The data are representative endoscopic and histopathologic images of additional 39 patients diagnosed as early gastric cancer during MDT.

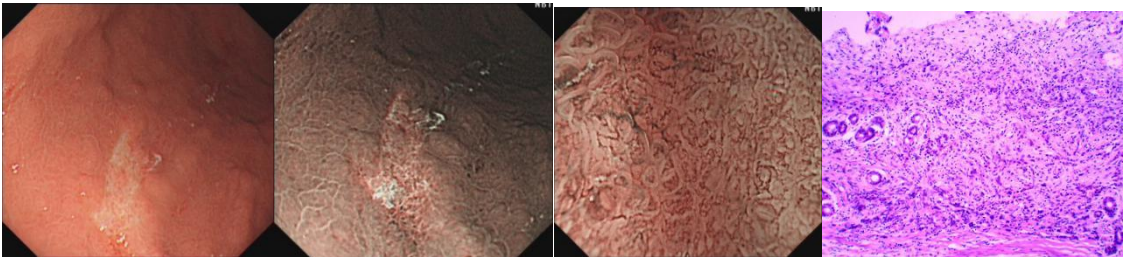
Case 1, male, 58y, 0- IIC, Por 1



Case 2, male, 52y, 0-III, Por 1



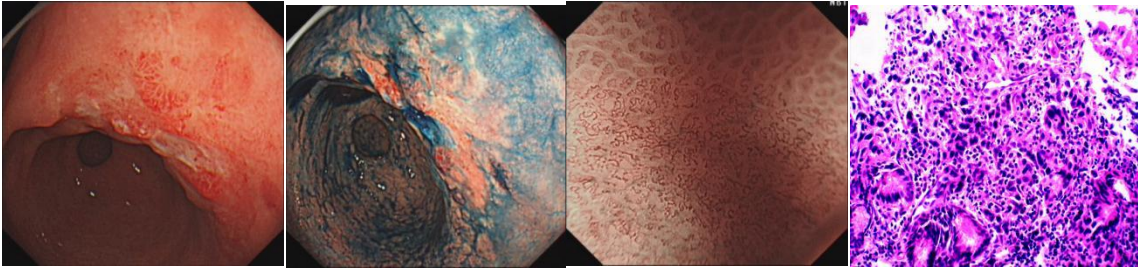
Case 3, female, 62y, 0-IIc, Por 1



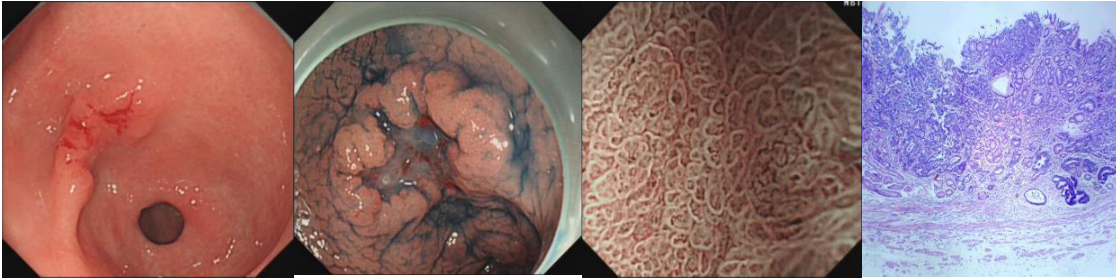
Case 4, male, 48y, 0-IIa+IIc, Por 1



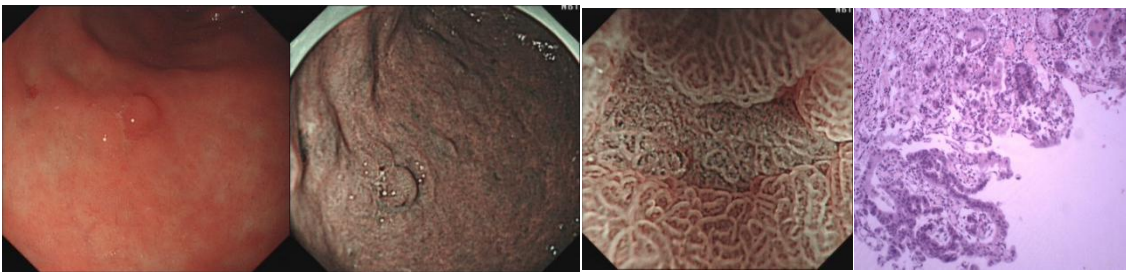
Case 5, female, 46y, 0-III, Por 1



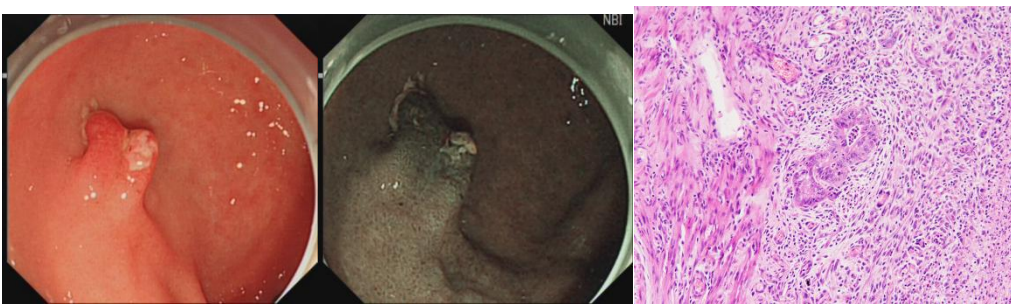
Case 6, male, 80y, 0-III, Por 1



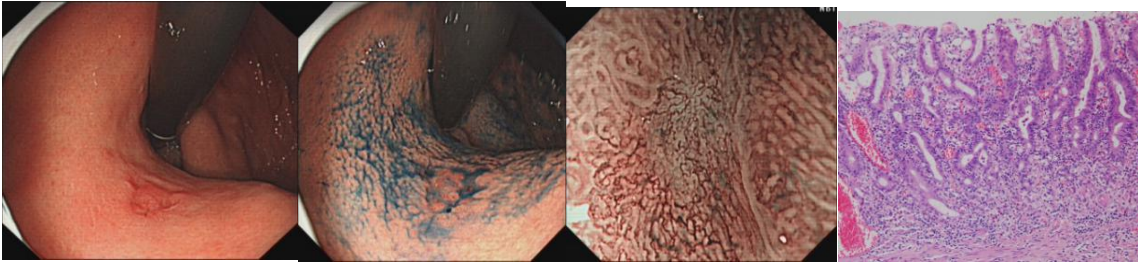
Case 7, male, 72y, 0-IIc+IIa, HGIN



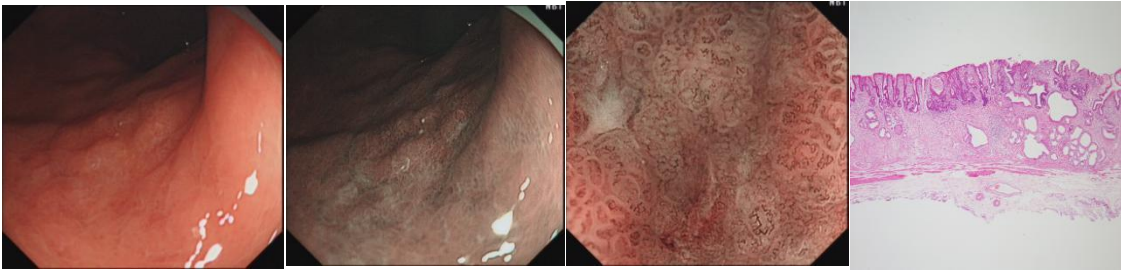
Case 8, male, 69y, 0-I, Tub1



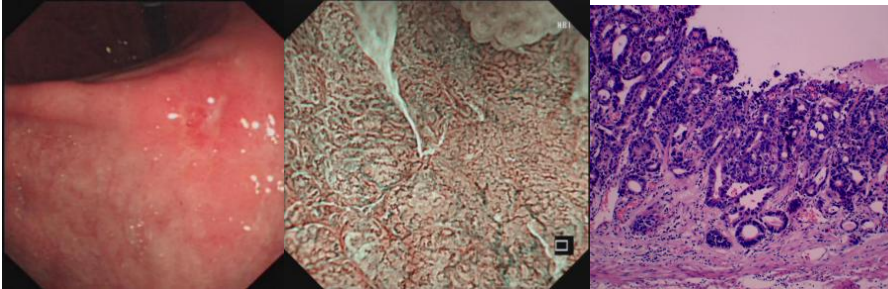
Case 9, male, 73y, 0-IIa+IIc, HGIN



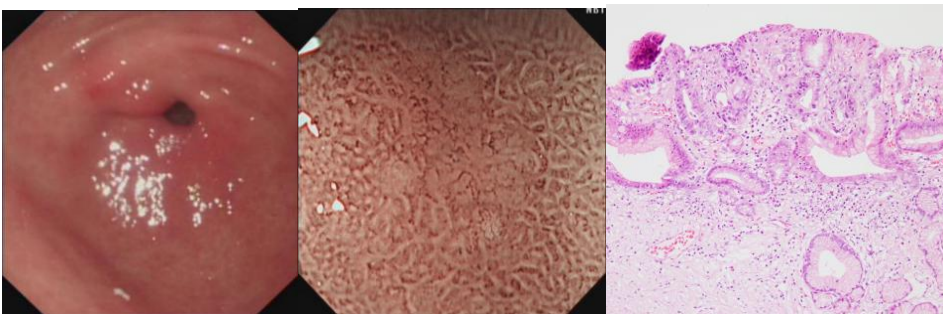
Case 10, male, 67y, 0-IIc, HGIN



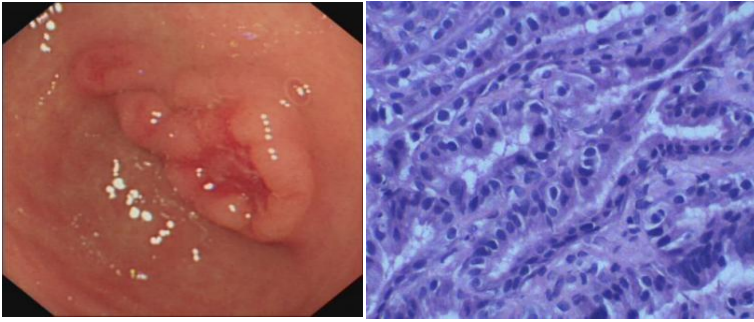
Case 11, male, 53y, 0-IIc, Tub1, 2



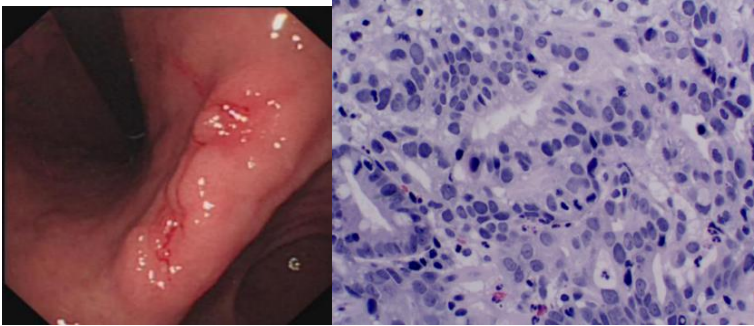
Case 12, female, 73y, 0-IIb, HGIN



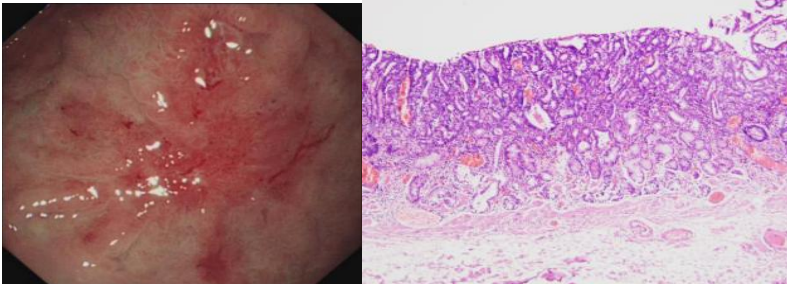
Case 13, male, 48y, 0-IIa+IIc, Tub1, 2



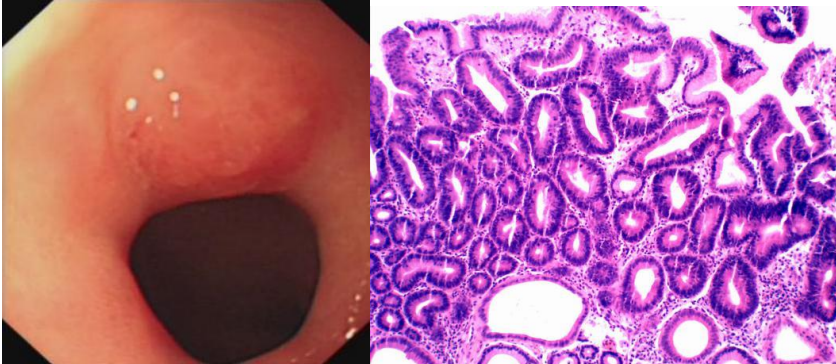
Case 14, male, 59y, 0-IIa+IIc, Tub 1



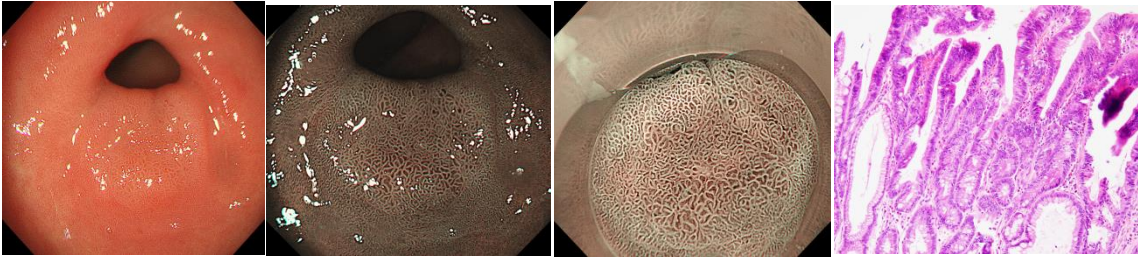
Case 15, male, 79y, 0-IIc, Tub1, 2



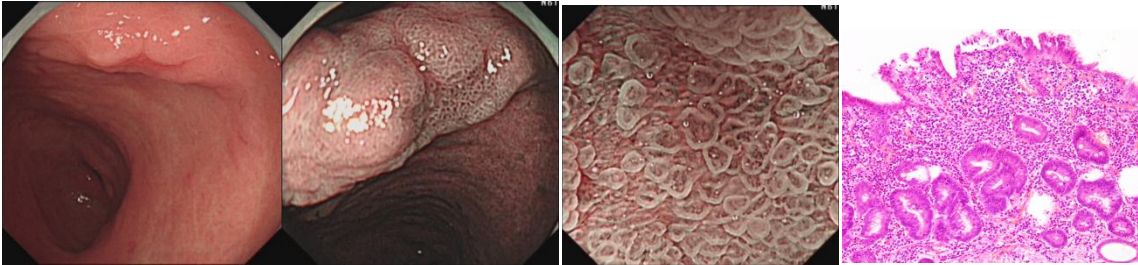
Case 16, female, 49y, 0-II a, HGIN



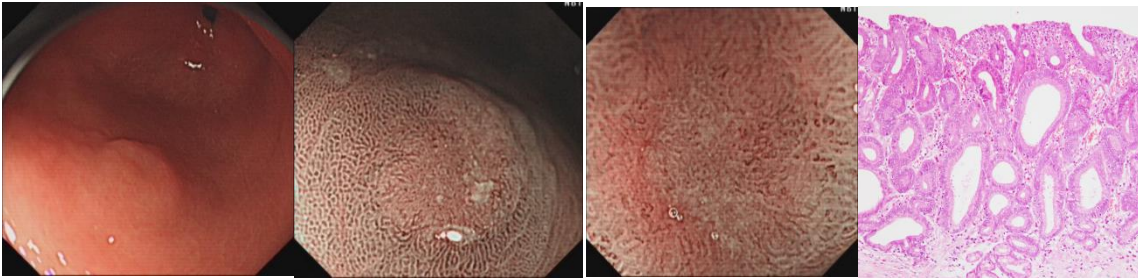
Case 17, male, 48y, 0-IIa, HGIN



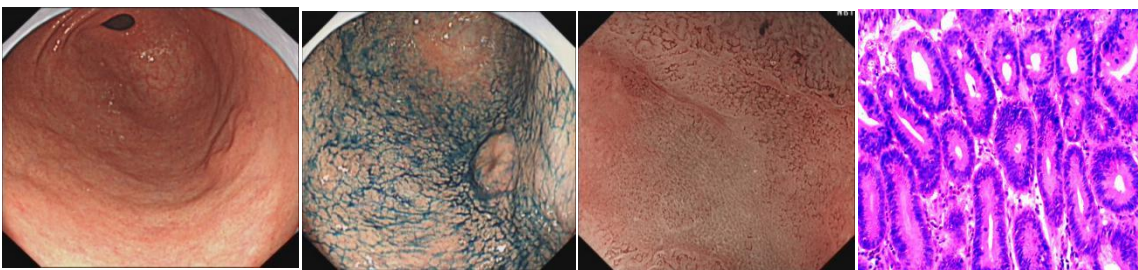
Case 18, male, 55y, 0-IIa+IIc, HGIN



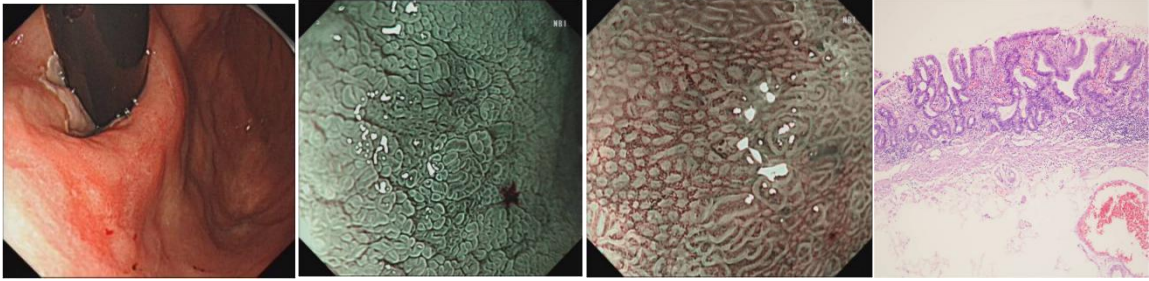
Case 19, male, 53y, 0-IIa, HGIN



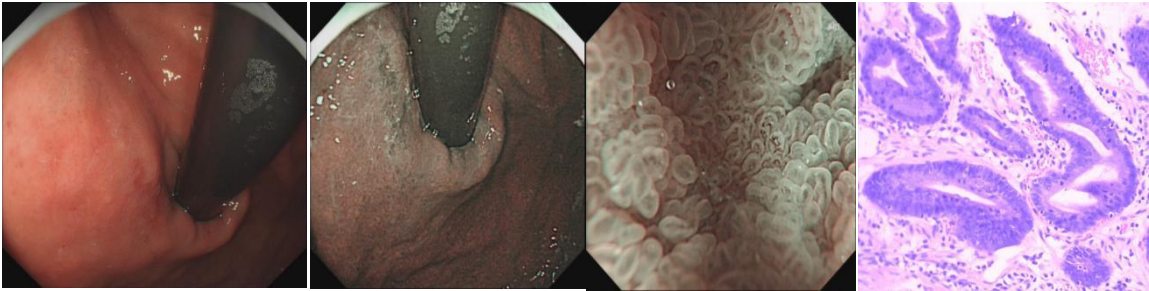
Case 20, male, 62y, 0-IIa+IIc, HGIN



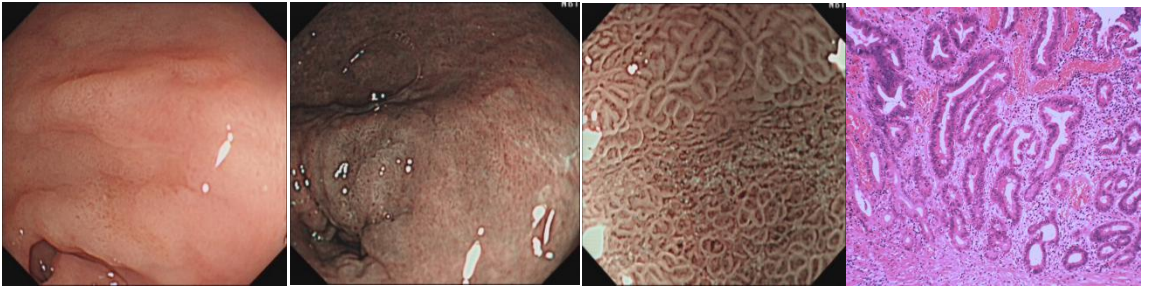
Case 21, male, 79y, 0-IIc ,HGIN



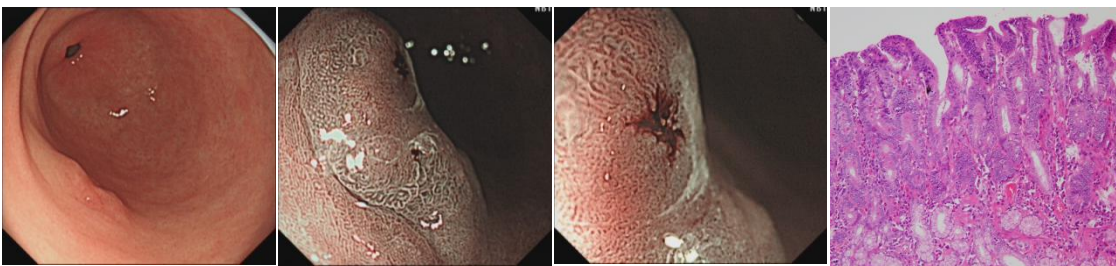
Case 22, male, 62y, 0-IIc, HGIN



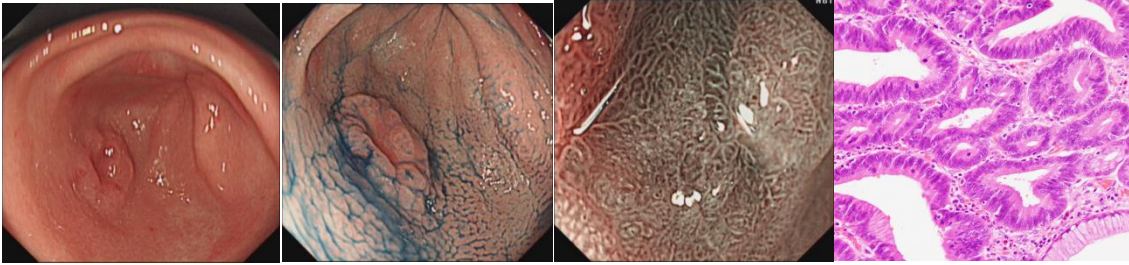
Case 23, male, 52y, 0-IIc, HGIN



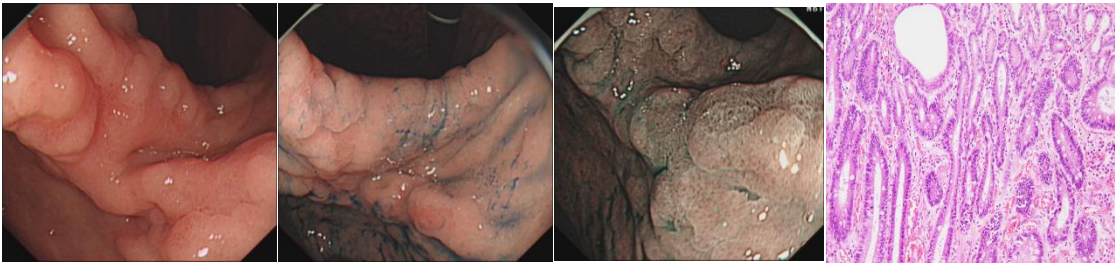
Case 24, female, 48y, 0-IIa, HGIN



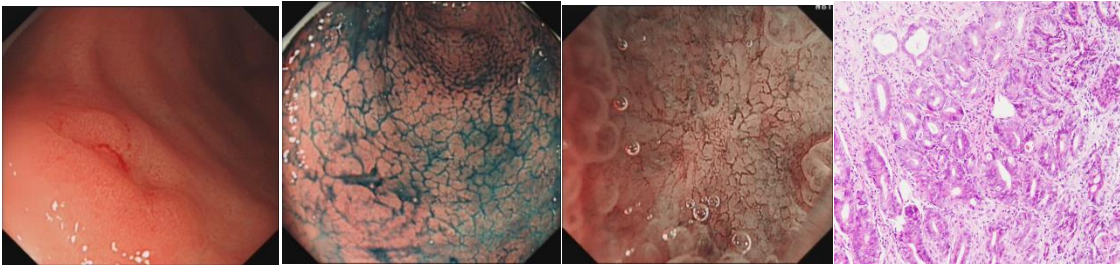
Case 25, male, 52y, 0-IIa+IIc, HGIN



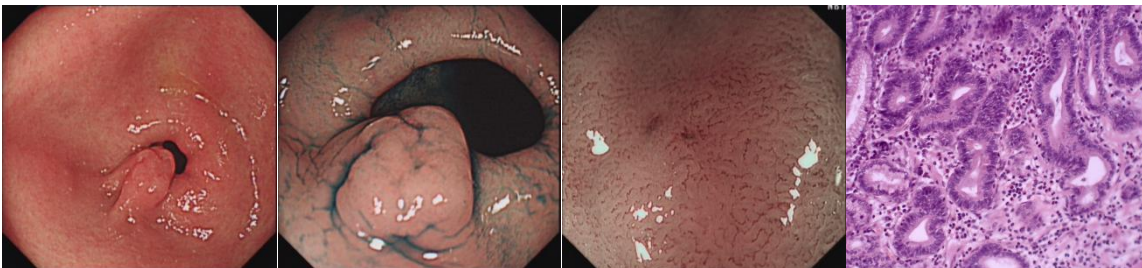
Case 26, male, 67y, 0-IIc+IIa, HGIN



Case 27, male, 61y, 0-IIc, HGIN



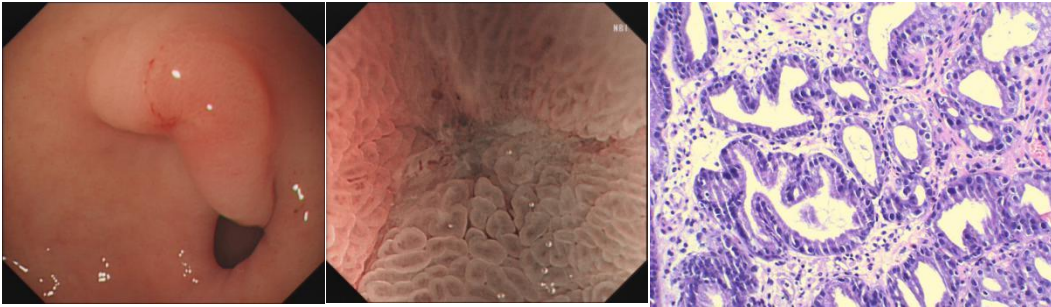
Case 28, female, 61y, 0-II a, HGIN



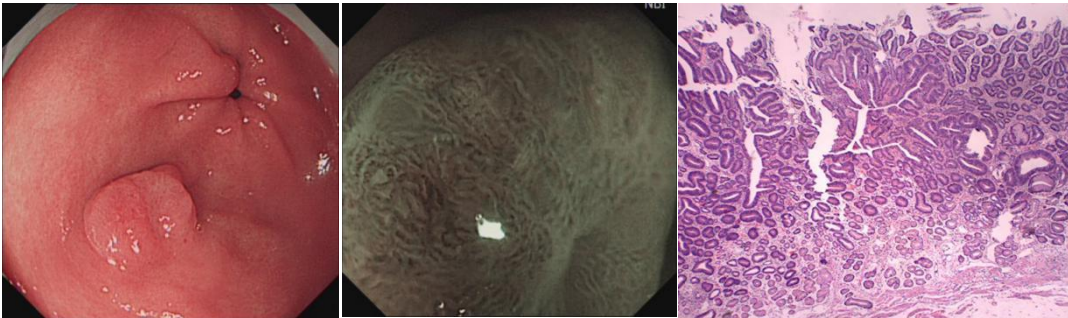
Case 29, male, 43y, 0-IIa+IIc, HGIN



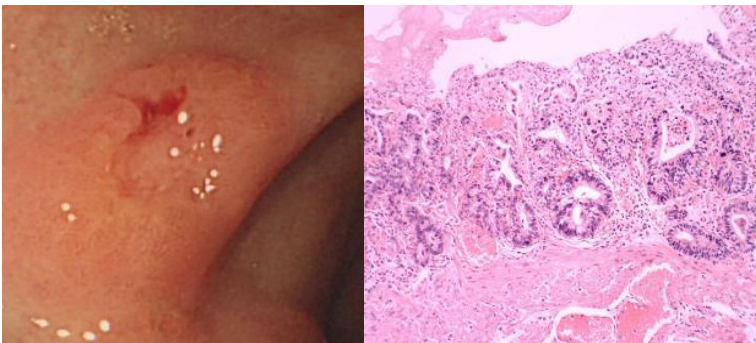
Case 30, female, 47y, 0-II a +IIc, HGIN



Case 31, male, 42y, 0-II a +IIc, HGIN

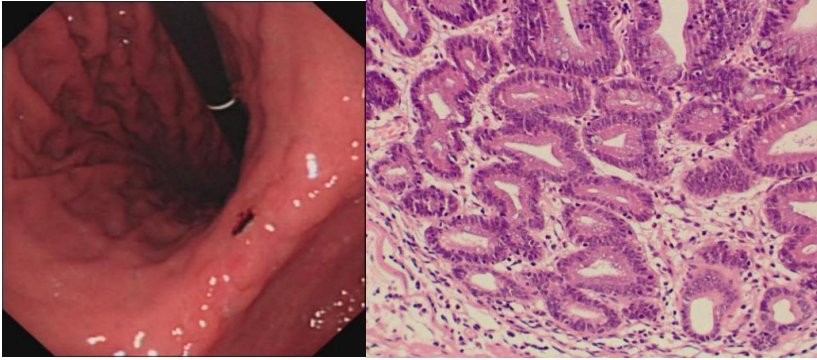


Case 32 ,male, 46y, 0-IIc, Tub 1

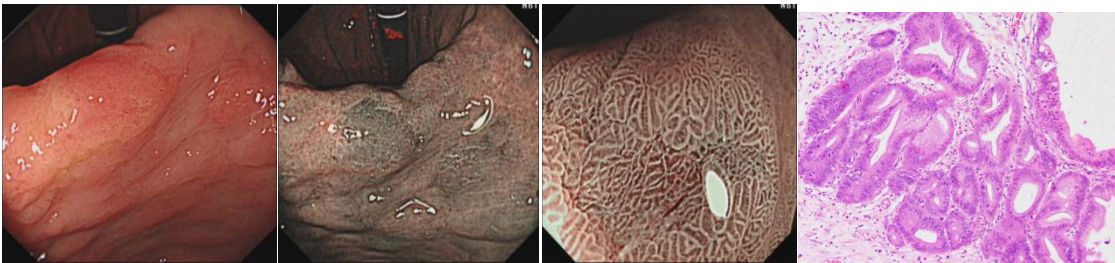




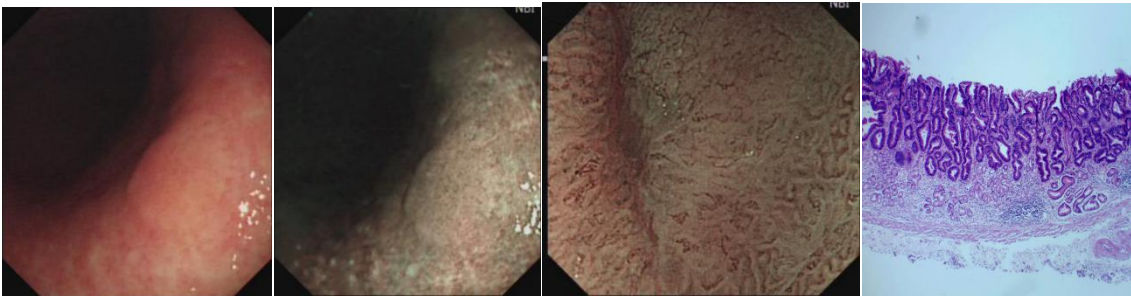
Case 33, male, 71y, 0-II a +IIc, HGIN



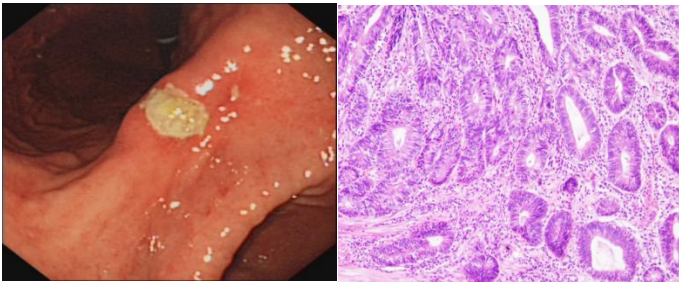
Case 34, female, 51y, 0-IIa, HGIN



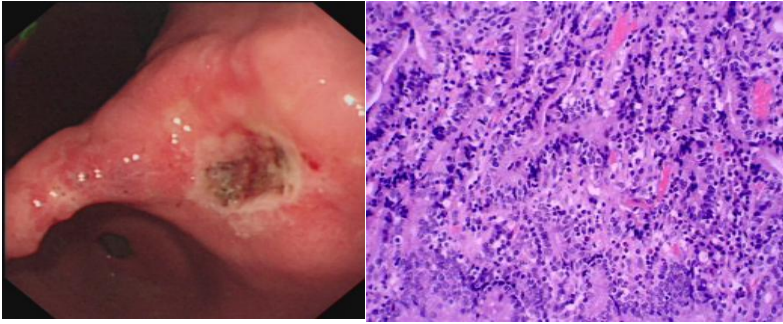
Case 35, female, 66y, 0-II a, HGIN



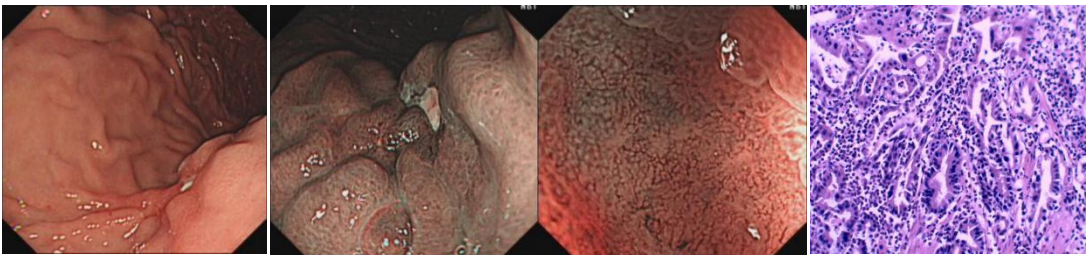
Case 36, male, 69y, 0-III, Tub 1



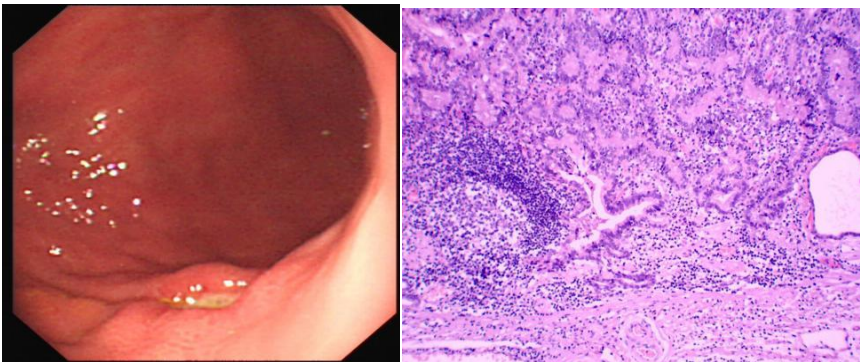
Case 37, female, 49y, 0-III, Tub1, 2



Case 38, male, 46y, 0-III, Tub 1



Case 39, male, 45y, 0-III, Tub1, 2



**Notes:** EGC, early gastric cancer; HGIN, high-grade intraepithelial neoplasias; MDT, multi-disciplinary team; Por 1, poorly-differentiated adenocarcinoma; Sig, signet-ring cell carcinoma; Tub1, well-differentiated adenocarcinoma; Tub 2, moderately-differentiated adenocarcinoma.