

# Unedited blot and gel images

## **The antibodies used in western blots as follow:**

ARID1A ( #12354; Cell Signaling Technology; 1:1,000 dilution for western blot), 270kDa

$\alpha$ -tubulin ( #ab7291; Abcam; 1:5,000 dilution for western blot), 55kDa

## **The Protein Ladder used in western blots as follow:**

PageRuler Plus Prestained Protein Ladder( #26619; Thermo Scientific™)

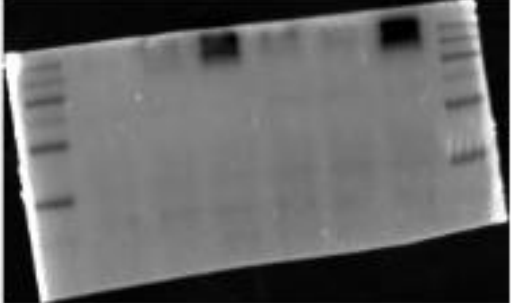
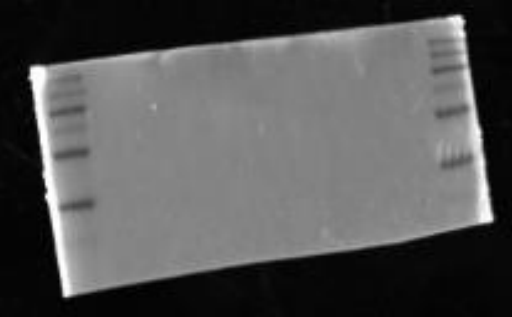
**Fig. 2e**

Band

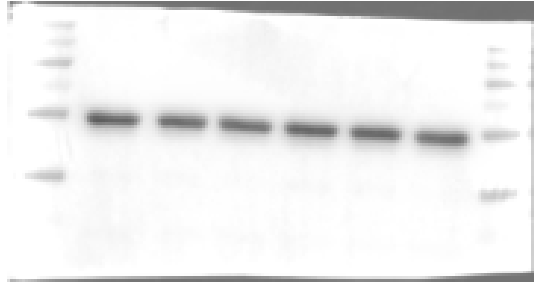
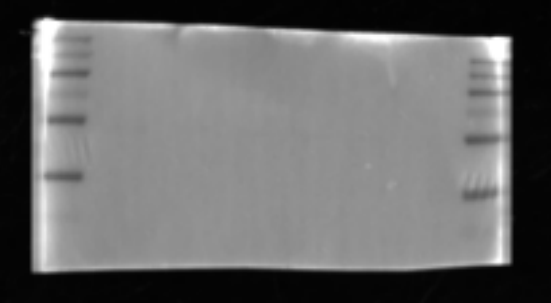
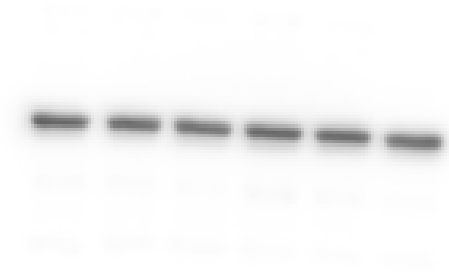
Maker

Merge

ARID1A



Tublin



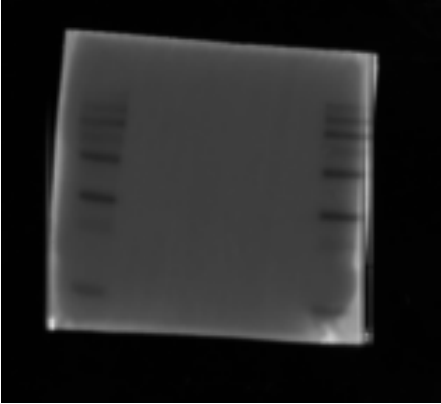
**Fig. 5b**

Band

Maker

Merge

ARID1A



Tublin

