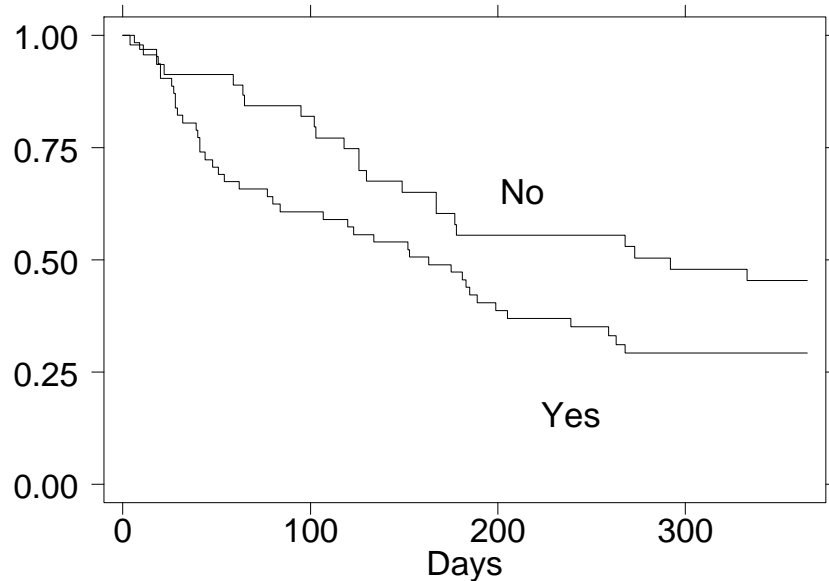


### Fallen in the last year

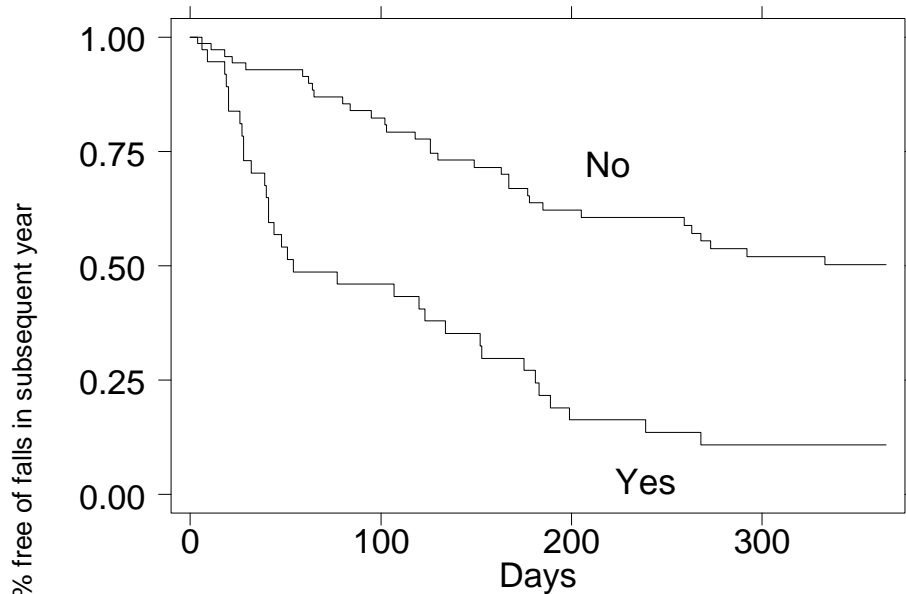


Unadjusted Hazard Ratio (95% C.I.) 1.7 (1.0-2.8)

Adjusted Hazard Ratio \* (95% C.I.) 1.4 (0.8-2.4)

\* Adjusted for age, sex, living in any care setting, education and social class

### Fallen more than once in the last year



Unadjusted Hazard Ratio (95% C.I.) 3.5 (2.1-5.7)

Adjusted Hazard Ratio \* (95% C.I.) 3.3 (1.9-5.6)