

08/2010

03/2012

10/2013

04/2013

08/2013

PSL
(mg)

30

20

10

0

Mizoribine

ADA

RIF 450 mg

RBT 150 mg 300 mg

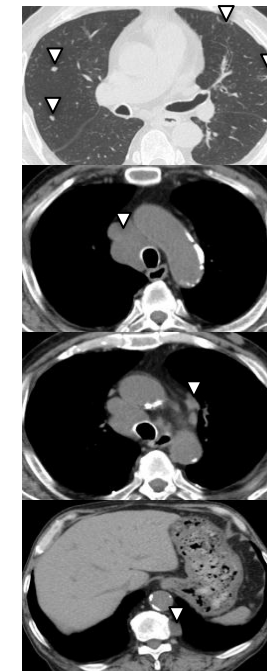
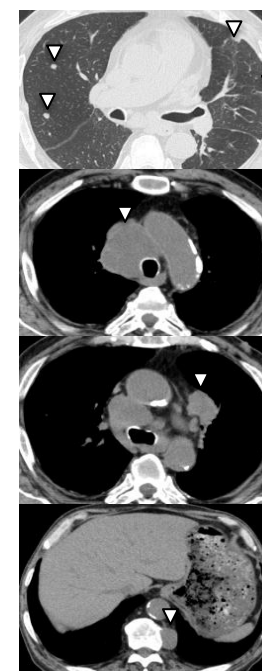
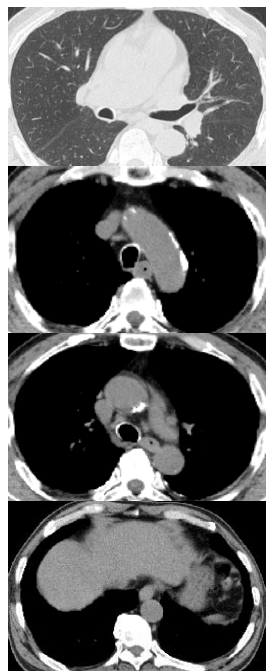
TAC 1 mg

CAM 800 mg

1000 mg

EMB 750 mg

SM 0.75 g × 3/week



Acid-fast stain	+++	+++	-	++	-	-	-	-
PCR	+	+	-	+	-	-	-	-
Culture result	+	+	-	-	-	-	-	-
Specimen	Sputum	Mediastinal LN	Sputum	Subcutaneous abscess	Sputum	Subcutaneous abscess	Subcutaneous abscess	Sputum