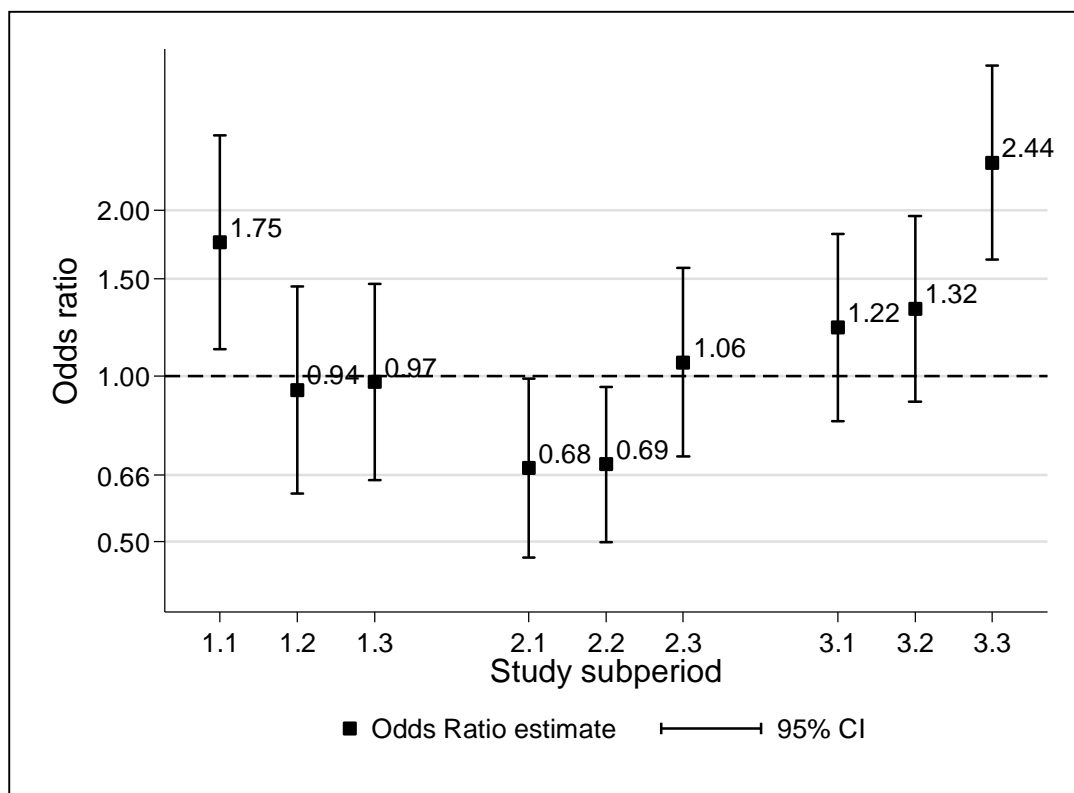


## Additional file 1 – Change in Hawthorne effect over time, exploratory analyses

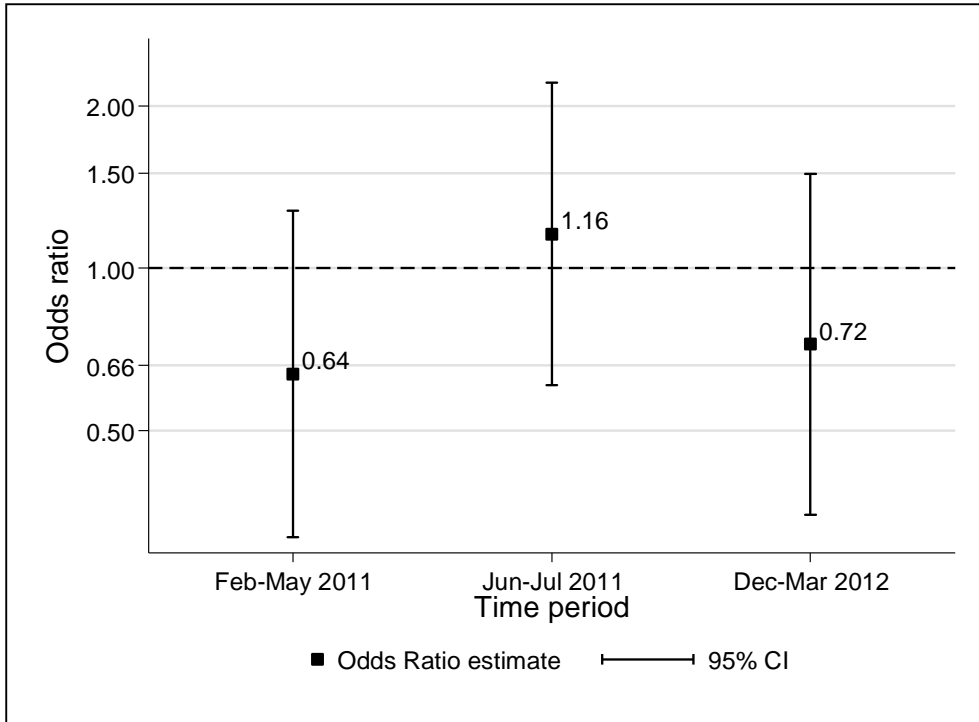
Odds ratio = Ratio of odds of experiencing outcome for survey days compared to non-survey days. Estimates from a three-level hierarchical model (with health facility and calendar day as random effects) adjusted for day of the week, and stratified by study period. RDT= Rapid diagnostic test, CI=Confidence Interval

### AF1.1 Hawthorne effect on reporting a RDT result, by study period and subperiod

Each study period was split in 3 subperiods of equal sample size.



**AF1.2 Hawthorne effect on antimalarial drug prescription among patients with negative RDT result, by study period**



**AF1.3 Hawthorne effect on antimalarial drug prescription among patients without RDT result, by study period**

