

Figure S1. Flow cytometry gating strategy for analysis of T cell subsets. A representative example of the gating strategy used for the phenotypic characterization is shown. Cellular debris and non-leucocytes were excluded as $CD45RA^-CD45RO^-$ (A); among leucocytes ($CD45RA^+$ and/or $CD45RO^+$), lymphocytes were identified based on FSC/SSC profile (B). T cells ($CD3^+$) were selected from lymphocytes (C) and divided in $CD4^+$ and $CD8^+$ cells (D). Naïve and memory T cells were defined as $CD45RA^+CD45RO^-$ and $CD45RA^-CD45RO^+$, respectively, among $CD8^+$ T cells (E). Expression of the activation markers CD69 and HLA-DR was analyzed among total $CD8^+$ cells (H and I). Gates from naïve, memory, HLA-DR⁺ and CD69⁺ cells were transposed to $CD4^+$ T cells (not shown).

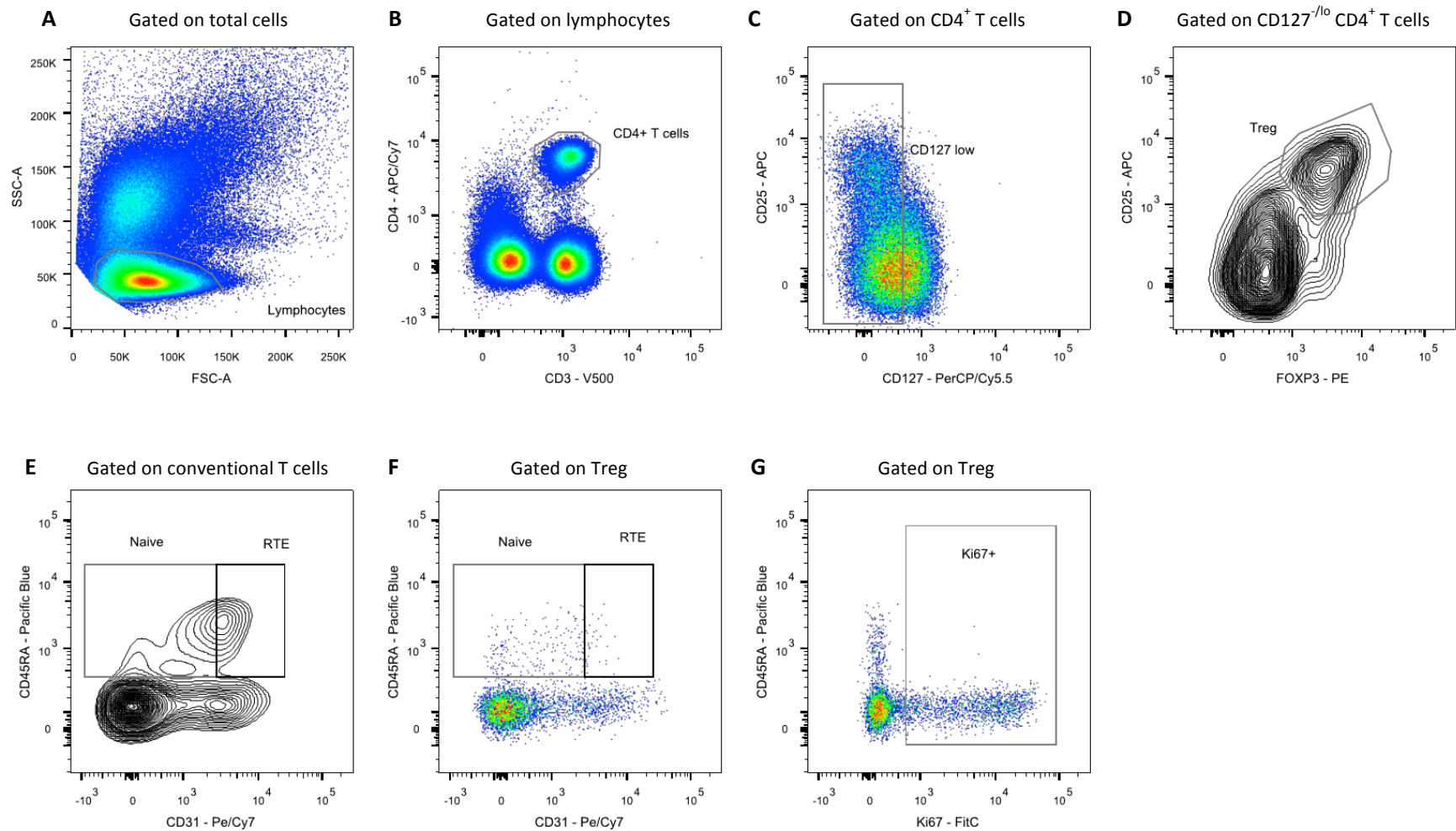


Figure S2. Flow cytometry gating strategy for analysis of regulatory T cells (Treg). A representative example of the gating strategy used for the phenotypic characterization of Treg is shown. Lymphocytes were identified based on FSC/SSC profile (**A**) and CD4⁺ T cells (CD4⁺CD3⁺) were selected within these (**B**). Treg were defined as CD127^{-/low} CD4⁺ T cells (**C**) that were CD25⁺FOXP3⁺ (**D**). Conventional T cells (Tconv) were defined using a “no gate” from Treg (not shown). Naïve (CD45RA⁺) and recent thymic emigrant cells (CD45RA⁺ CD31^{hi}) were selected within conventional T cells (**E**) and gates were transposed to Treg (**F**). Ki67 expression was analyzed within Treg (**G**).

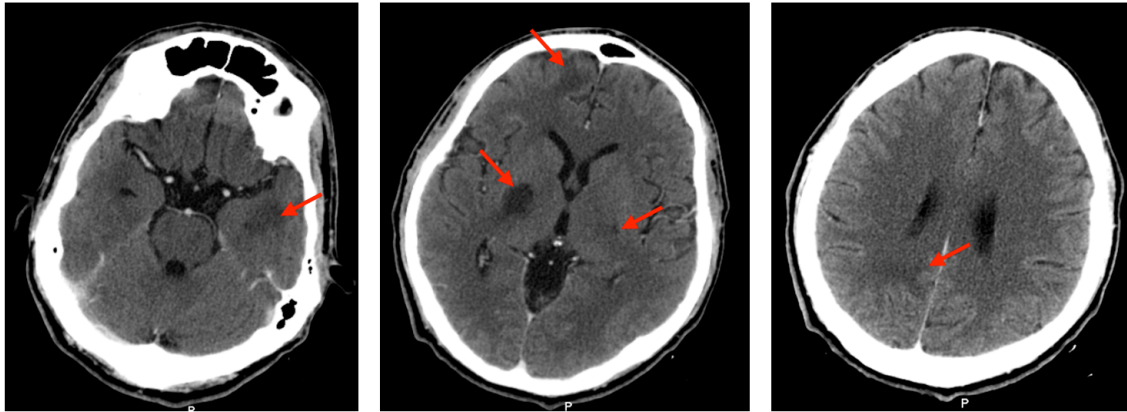


Figure S3. Brain CT performed after 14 days under specific anti-toxoplasma therapy, after contrast injection. Improvement of previous lesions is seen; mass effect and ring contrast enhancement are no longer evident.

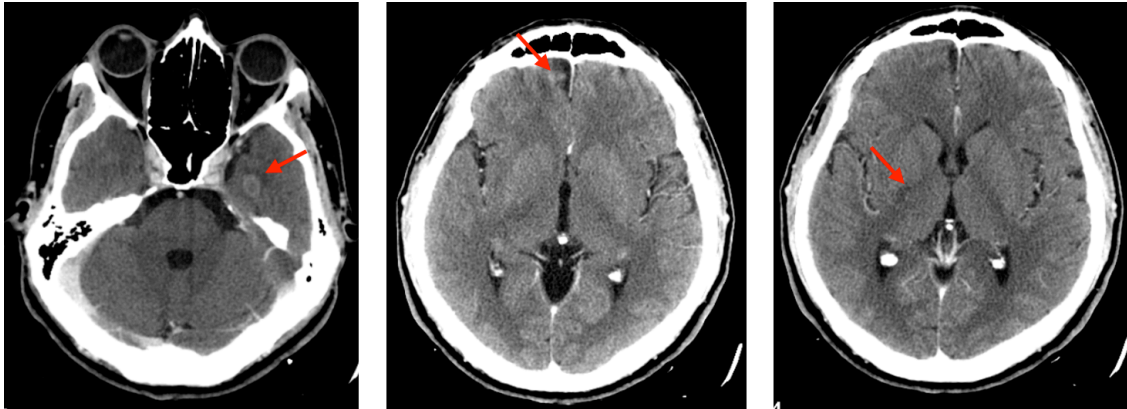


Figure S4. Brain CT performed after hospital admission, after contrast injection. Several hypo-density lesions are present, some of them with slight perilesional edema and ring enhancement.

Table S1: Comparison between the T cell subsets dynamics of control group and the patient with toxoplasmosis associated CNS-IRIS.

		Baseline		1 Month			2 Months			3 Months			6 Months				
		Case	Controls ¹	<i>p</i> value ²	Case	Controls ¹	<i>p</i> value ²	Case	Controls ¹	<i>p</i> value ²	Case	Controls ¹	<i>p</i> value ²	Case	Controls ¹	<i>p</i> value ²	
Absolute count (cells/ μ L)	CD4 ⁺	Total CD4 ⁺	20.0	38.3 \pm 30.7	<i>p</i> =0.111	67.0	109.0 \pm 65.2	<i>p</i> =0.223	143.0	137.2 \pm 58.9	<i>p</i> =0.776	128.0	107.4 \pm 57.9	<i>p</i> =0.471	165.0	136.1 \pm 44.6	<i>p</i> =0.088
		Naïve	3.2	3.4 \pm 3.3	<i>p</i> =0.885	0.4	9.6 \pm 10.6	<i>p</i> =0.122	1.0	7.1 \pm 7.8	<i>p</i>=0.048	3.2	8.2 \pm 6.8	<i>p</i> =0.172	26.2	15.3 \pm 11.7	<i>p</i>=0.024
		Memory	14.0	32.5 \pm 26.6	<i>p</i> =0.071	65.1	92.7 \pm 53.9	<i>p</i> =0.316	137.6	124.4 \pm 54.1	<i>p</i> =0.484	122.2	89.0 \pm 47.9	<i>p</i> =0.196	129.4	112.9 \pm 37.8	<i>p</i> =0.226
		CD69 ⁺	7.1	7.4 \pm 9.2	<i>p</i> =0.933	15.4	19.8 \pm 22.2	<i>p</i> =0.679	5.0	12.6 \pm 6.6	<i>p</i>=0.009	23.2	15.5 \pm 8.9	<i>p</i> =0.126	31.7	15.4 \pm 8.1	<i>p</i><0.001
		HLA-DR ⁺	13.8	15.5 \pm 15.5	<i>p</i> =0.748	38.3	45.9 \pm 40.4	<i>p</i> =0.697	51.5	60.2 \pm 29.9	<i>p</i> =0.408	79.5	43.4 \pm 25.8	<i>p</i>=0.035	53.1	40.8 \pm 13.3	<i>p</i>=0.025
	CD8 ⁺	Total CD8 ⁺	1186.0	746.6 \pm 415.0	<i>p</i>=0.013	1078.0	1288.8 \pm 537.6	<i>p</i> =0.430	1308.0	1087.0 \pm 448.7	<i>p</i> =0.178	852.0	920.4 \pm 384.8	<i>p</i> =0.711	1132.0	957.6 \pm 590.9	<i>p</i> =0.402
		Naïve	498.0	207.1 \pm 155.2	<i>p</i><0.001	538.0	377.8 \pm 203.8	<i>p</i> =0.154	695.0	329.8 \pm 226.5	<i>p</i>=0.001	344.0	297.6 \pm 219.0	<i>p</i> =0.660	503.0	326.4 \pm 256.1	<i>p</i> =0.104
		Memory	442.0	391.0 [191.0; 1446.0]	<i>p</i> =0.314	314.0	780.0 \pm 646.7	<i>p</i> =0.182	419.0	458.0 [155.0; 1447.0]	<i>p</i> =0.214	244.0	313.0 [216.0 ; 977.0]	<i>p</i> =0.080	237.0	462.3 \pm 296.3	<i>p</i> =0.052
		CD69 ⁺	248.0	173.8 \pm 103.4	<i>p</i> =0.063	232.0	266.2 \pm 154.0	<i>p</i> =0.645	84.0	154.8 \pm 64.0	<i>p</i>=0.011	159.0	184.6 \pm 118.0	<i>p</i> =0.653	191.0	138.1 \pm 83.1	<i>p</i> =0.093
		HLA-DR ⁺	306.0	170.0 [28.9; 966.0]	<i>p</i> =0.110	344.0	210.0 [181.0; 837.0]	<i>p</i> =0.686	229.0	333.9 \pm 220.5	<i>p</i> =0.191	264.0	195.0 [140.0; 666.0]	<i>p</i> =0.500	307.0	235.7 \pm 193.3	<i>p</i> =0.300
Percentage (%)	CD4 ⁺	Naïve (% among CD4 ⁺)	15.9	9.9 \pm 8.7	<i>p</i> =0.073	0.6	5.1 \pm 5.4	<i>p</i>=0.050	0.7	4.6 \pm 4.8	<i>p</i>=0.041	2.5	5.2 \pm 4.1	<i>p</i> =0.083	15.9	10.5 \pm 7.2	<i>p</i> =0.053
		Memory (% among CD4 ⁺)	69.9	81.9 \pm 10.9	<i>p</i>=0.011	97.1	89.5 \pm 7.8	<i>p</i>=0.029	96.2	93.3 [75.5; 97.5]	<i>p</i>=0.015	95.5	92.2 [71.3; 95.0]	<i>p</i>=0.008	78.4	83.6 \pm 10.0	<i>p</i> =0.155
		CD69 ⁺ (% among CD4 ⁺)	35.7	16.0 \pm 7.9	<i>p</i><0.001	23.0	10.0 [6.6; 38.3]	<i>p</i> =0.069	3.5	9.9 \pm 5.2	<i>p</i>=0.006	18.1	11.8 \pm 5.1	<i>p</i>=0.006	19.2	9.3 [7.2; 21.5]	<i>p</i>=0.021
		HLA-DR ⁺ (% among CD4 ⁺)	69.0	36.8 \pm 15.1	<i>p</i><0.001	57.2	42.2 \pm 19.1	<i>p</i> =0.061	36.0	43.9 \pm 10.1	<i>p</i>=0.046	62.1	39.2 \pm 14.5	<i>p</i>=0.001	32.2	32.1 \pm 10.9	<i>p</i> =0.986
	CD8 ⁺	Naïve (% among CD8 ⁺)	42.0	31.0 \pm 18.3	<i>p</i> =0.107	49.9	32.5 \pm 21.01	<i>p</i> =0.052	53.1	31.4 \pm 19.9	<i>p</i>=0.011	40.4	32.9 \pm 20.3	<i>p</i> =0.300	44.4	34.1 \pm 19.7	<i>p</i> =0.155
		Memory (% among CD8 ⁺)	37.3	48.4 [39.2;85.3]	<i>p</i>=0.008	29.1	57.4 \pm 24.4	<i>p</i>=0.014	32.0	55.2 \pm 18.8	<i>p</i>=0.006	28.6	50.5 \pm 15.4	<i>p</i>=0.003	20.9	50.0 \pm 17.8	<i>p</i>=0.001
		CD69 ⁺ (% among CD8 ⁺)	20.9	23.7 \pm 7.0	<i>p</i> =0.262	21.5	17.7 [11.5; 37.2]	<i>p</i> =0.208	6.4	15.0 \pm 5.6	<i>p</i>=0.002	18.7	15.8 \pm 5.5	<i>p</i> =0.151	16.9	11.9 [10.9; 24.0]	<i>p</i> =0.173
		HLA-DR ⁺ (% among CD8 ⁺)	25.8	27.3 \pm 14.1	<i>p</i> =0.752	31.9	30.6 \pm 19.0	<i>p</i> =0.856	17.5	29.8 \pm 10.7	<i>p</i>=0.009	31.0	25.8 \pm 8.8	<i>p</i> =0.116	27.1	22.0 [9.7; 50.3]	<i>p</i> =0.110

¹ Mean \pm SD are represented for variables normally distributed; median and [min; max] are represented for the variables not normally distributed.

² For normally distributed variables, comparison of the control group with the clinical case was performed by one-sample T-test; for the other variables a one-sample Wilcoxon signed rank test was applied. Cells in bold show significant differences (*p*<0.05) between the value of the clinical case and the mean/median of the control group.

Table S2: Comparison between regulatory T cell (Treg) subsets dynamics of control group and the patient with toxoplasmosis associated CNS-IRIS.

		Baseline			1 Month			2 Months			3 Months			6 Months		
		Case	Controls ¹	<i>p</i> value ²	Case	Controls ¹	<i>p</i> value ²	Case	Controls ¹	<i>p</i> value ²	Case	Controls ¹	<i>p</i> value ²	Case	Controls ¹	<i>p</i> value ²
Absolute count (cells/ μ L)	Treg	3.2	6.1 \pm 5.1	<i>p</i> =0.155	4.9	12.4 \pm 5.8	<i>p</i>=0.044	17.4	23.7 \pm 18.0	<i>p</i> =0.325	27.6	12.3 \pm 6.8	<i>p</i>=0.007	22.1	15.8 \pm 7.5	<i>p</i>=0.036
	Naïve Treg	1.1	0.1 \pm 0.1	<i>p</i><0.001	0.2	0.5 \pm 0.4	<i>p</i> =0.154	0.6	1.3 \pm 1.0	<i>p</i> =0.086	3.8	0.9 \pm 1.1	<i>p</i>=0.005	3.23	1.5 \pm 1.6	<i>p</i>=0.015
	RTE Treg	0.8	0.0 \pm 0.1	<i>p</i><0.001	0.2	0.2 \pm 0.1	<i>p</i> =0.955	0.4	0.4 \pm 0.3	<i>p</i> =0.824	1.0	0.3 \pm 0.3	<i>p</i>=0.012	0.8	0.4 \pm 0.6	<i>p</i> =0.117
	Ki67 ⁺ Treg	0.9	1.3 \pm 1.2	<i>p</i> =0.514	2.2	3.6 \pm 2.2	<i>p</i> =0.230	5.51	4.8 \pm 3.3	<i>p</i> =0.622	3.2	2.9 \pm 1.9	<i>p</i> =0.781	5.66	2.8 \pm 1.3	<i>p</i><0.001
Percentage (%)	Treg (% among CD4 ⁺)	16.2	19.4 \pm 9.4	<i>p</i> =0.362	7.4	18.9 \pm 10.5	<i>p</i>=0.024	12.2	16.4 [3.6; 38.7]	<i>p</i> =0.374	21.6	12.7 [8.9; 48.6]	<i>p</i> =0.110	13.4	12.3 \pm 5.7	<i>p</i> =0.569
	Naïve (% among Treg)	33.6	1.7 \pm 1.3	<i>p</i><0.001	4.3	3.8 \pm 2.4	<i>p</i> =0.634	3.5	6.3 \pm 5.8	<i>p</i> =0.214	13.6	2.5 [0.2; 15.8]	<i>p</i>=0.017	14.6	5.4 [3.2; 25.0]	<i>p</i> =0.098
	RTE (% among Treg)	23.1	0.6 \pm 0.6	<i>p</i><0.001	2.9	1.4 \pm 0.8	<i>p</i>=0.001	2.3	1.1 [0.6; 6.2]	<i>p</i> =0.161	3.5	1.1 [0.6; 5.2]	<i>p</i>=0.025	3.5	1.7 [0.6; 11.0]	<i>p</i> =0.161
	Ki67 ⁺ (% among Treg)	28.4	30.5 \pm 19.4	<i>p</i> =0.820	44.8	28.3 \pm 9.1	<i>p</i>=0.007	31.6	25.2 \pm 6.1	<i>p</i>=0.049	11.6	20.0 \pm 9.0	<i>p</i>=0.049	25.6	15.3 [13.1; 35.9]	<i>p</i> =0.069

¹ Mean \pm SD are represented for variables normally distributed; median and [min; max] are represented for the variables not normally distributed.

² For normally distributed variables, comparison of the control group with the clinical case was performed by one-sample T-test; for the other variables a one-sample Wilcoxon signed rank test was applied. Cells in bold show significant differences (*p*<0.05) between the value of the clinical case and the mean/median of the control group.