

Figure 1: Measured and inferred EIRs used for calibration in Rafin Marke and Sugungum. Het pop split for Rafin Marke and Sugungum?

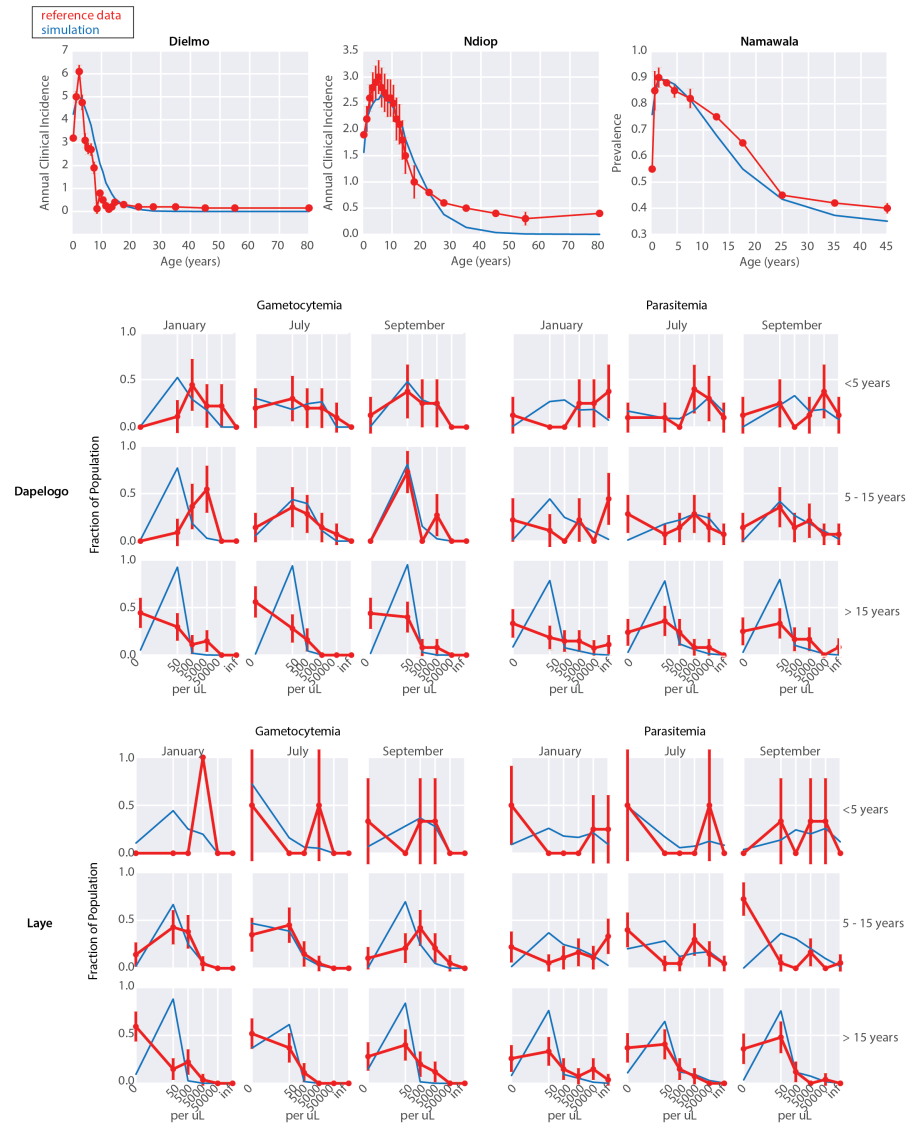


Figure 2: Comparison of reference data and calibrated simulation for Dielmo, Ndiop, Namawala, Dapelogo, and Laye study sites.

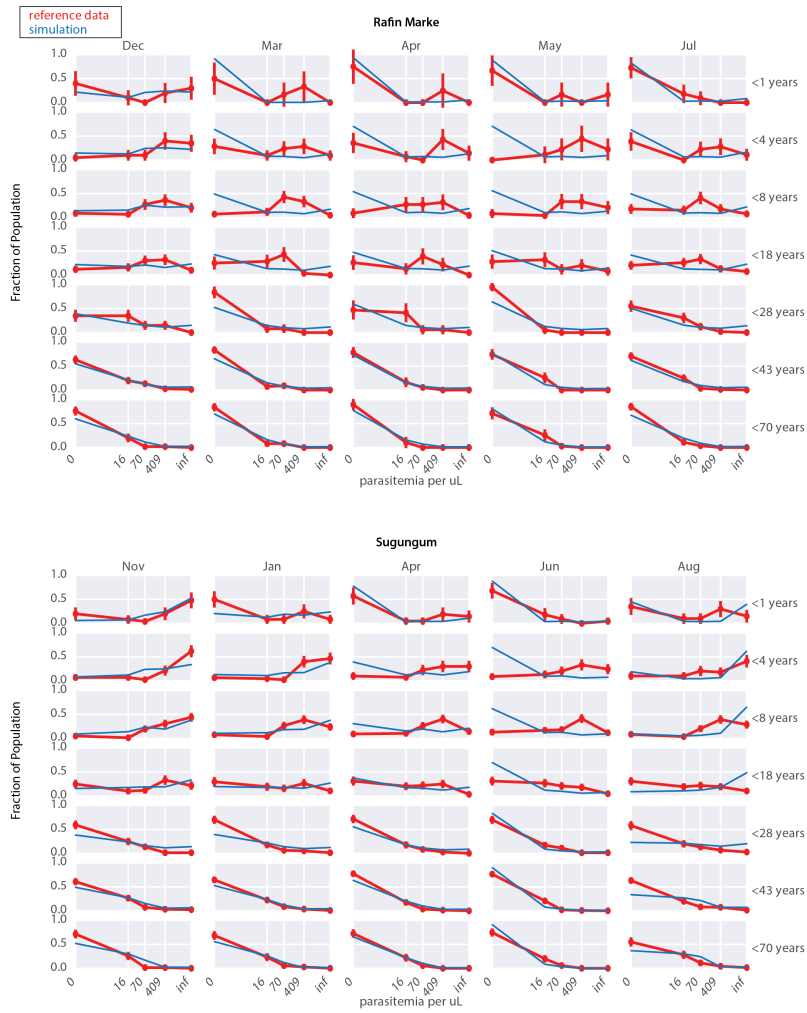


Figure 3: Comparison of reference data and calibrated simulation for Garki study sites not shown in main text.

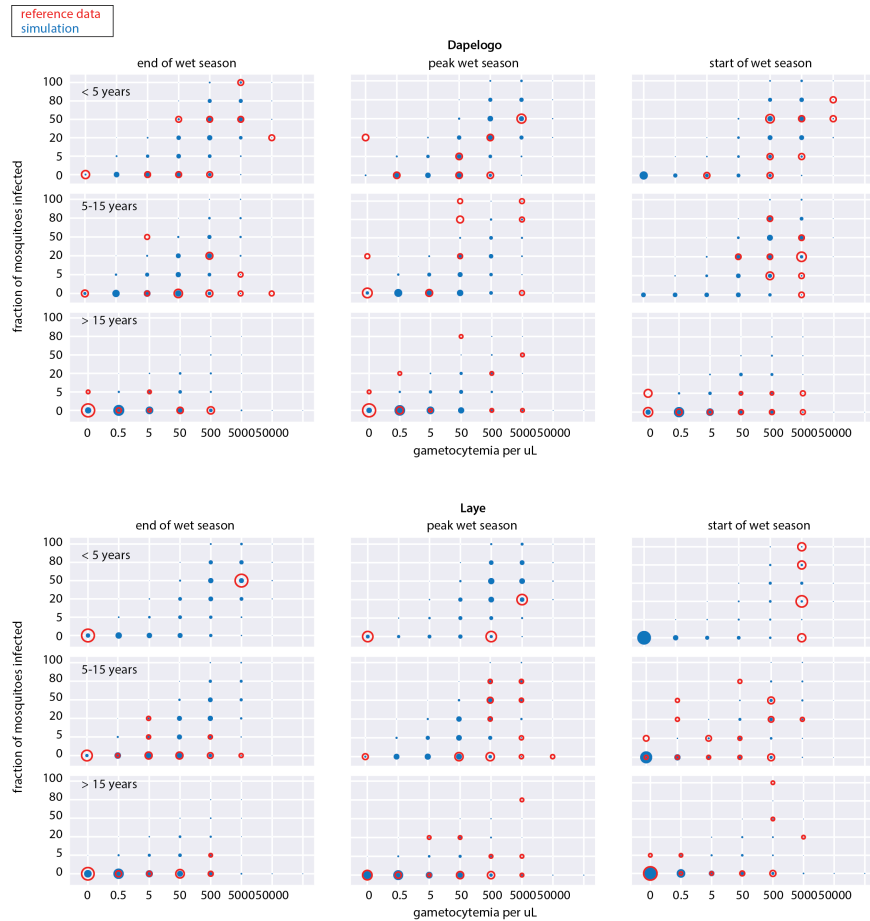


Figure 4: Comparison of reference data and calibrated simulation for relationship between gametocyte density and infectiousness to mosquitoes as measured in two Burkina Faso study sites.

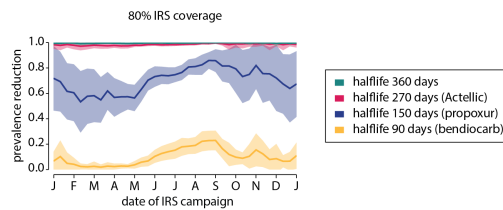


Figure 5: Optimal timing of IRS campaigns with IRS at 80% coverage.

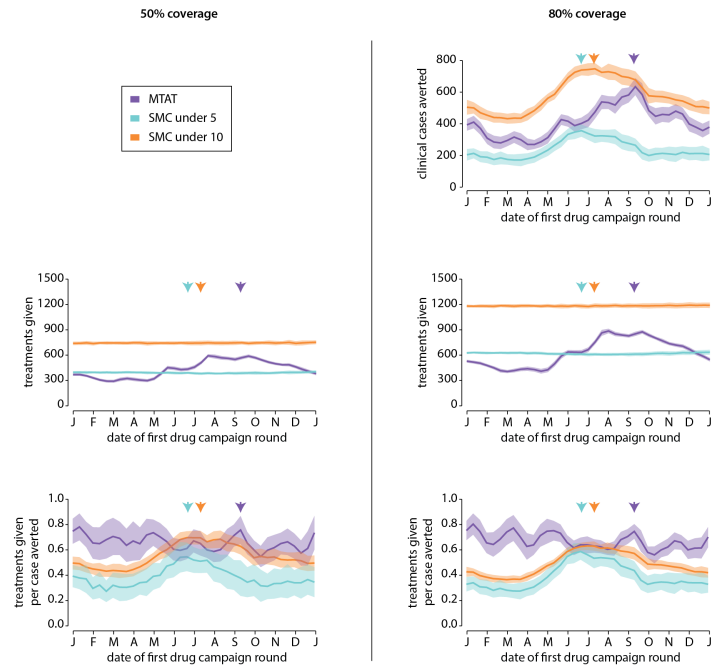


Figure 6: Cases averted and number of treatments given under various conditions of MTAT and SMC timing at 50 and 80% campaign coverage.

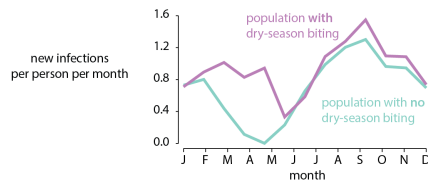


Figure 7: New infections per person per month in a population where 50% of individuals experience dry-season biting and 50% do not.