



Figure S1. Figure S1. CT images after treatment. The length of liver was 194.3mm and The length of spleen was 153.9mm.

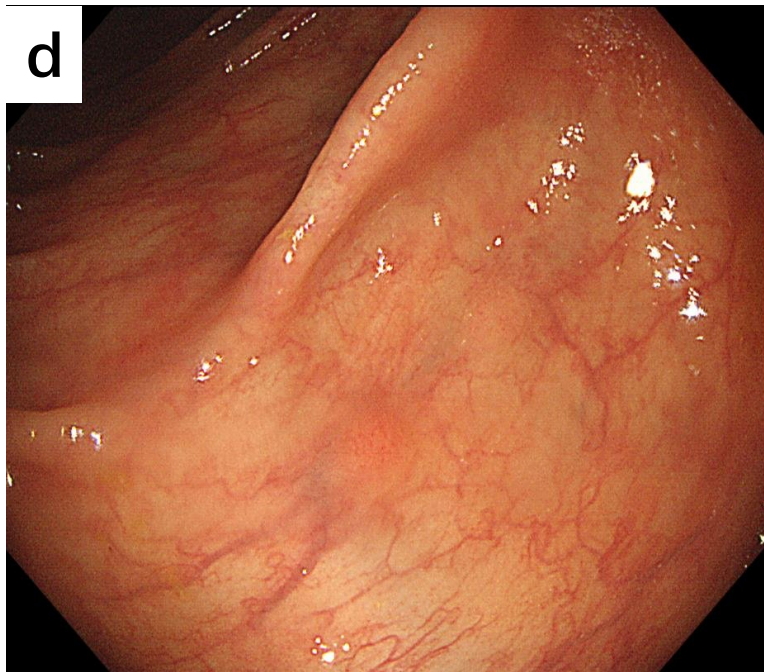
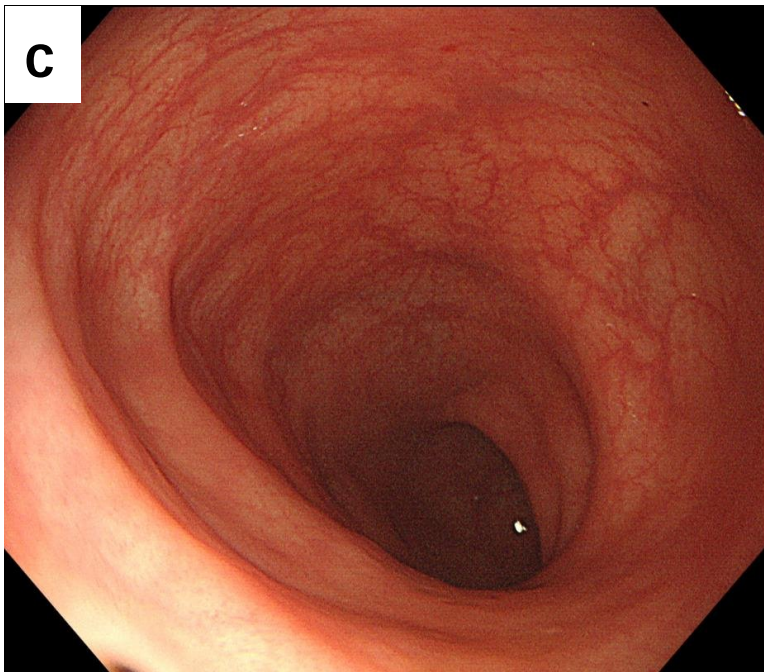
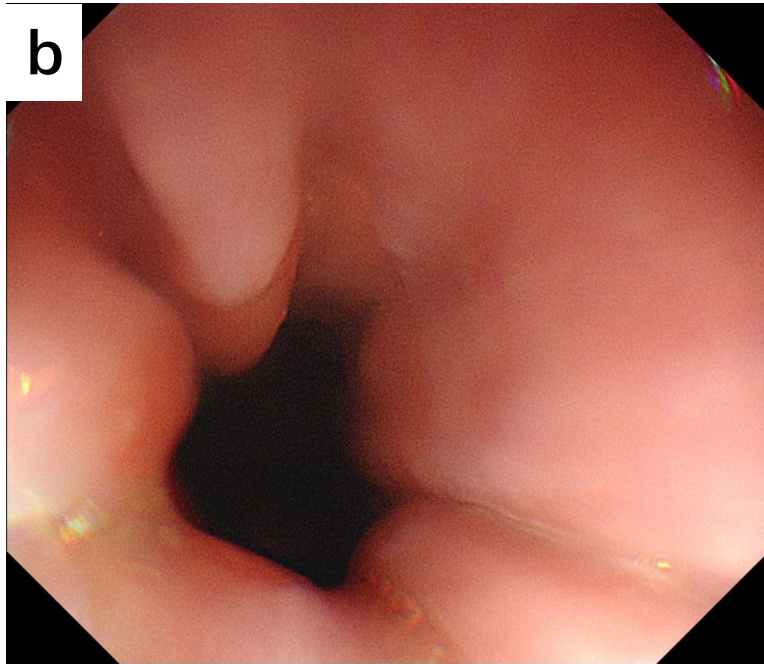
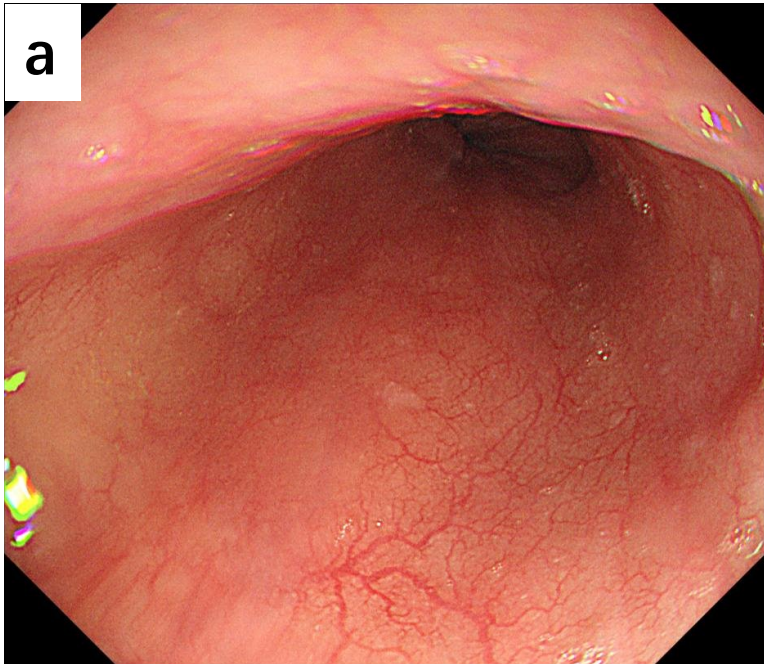


Figure S2. Gastrointestinal endoscopy images after treatment. (a, b) Esophageal mucosa was recovered. (c, d) Colon mucosa was recovered.

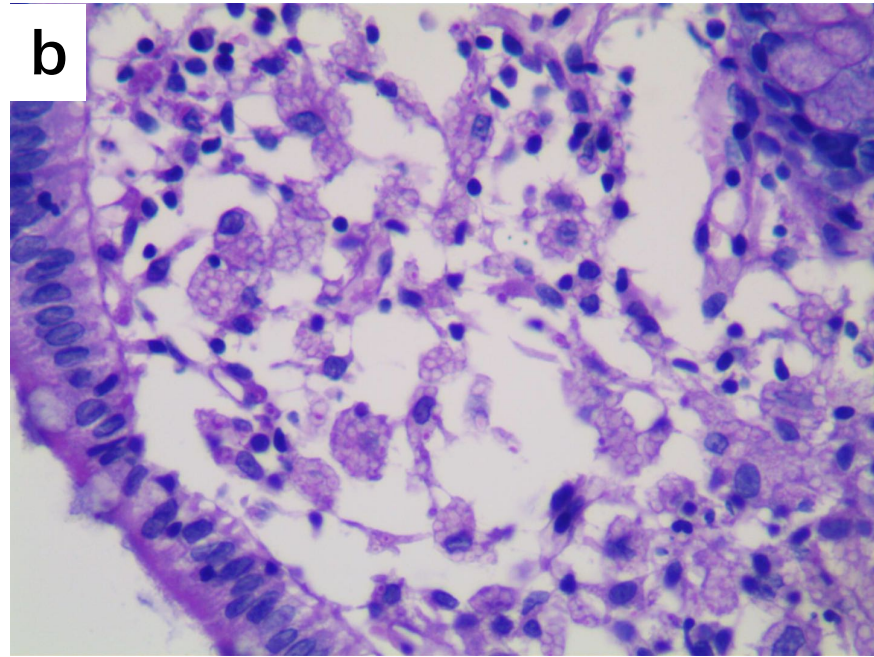
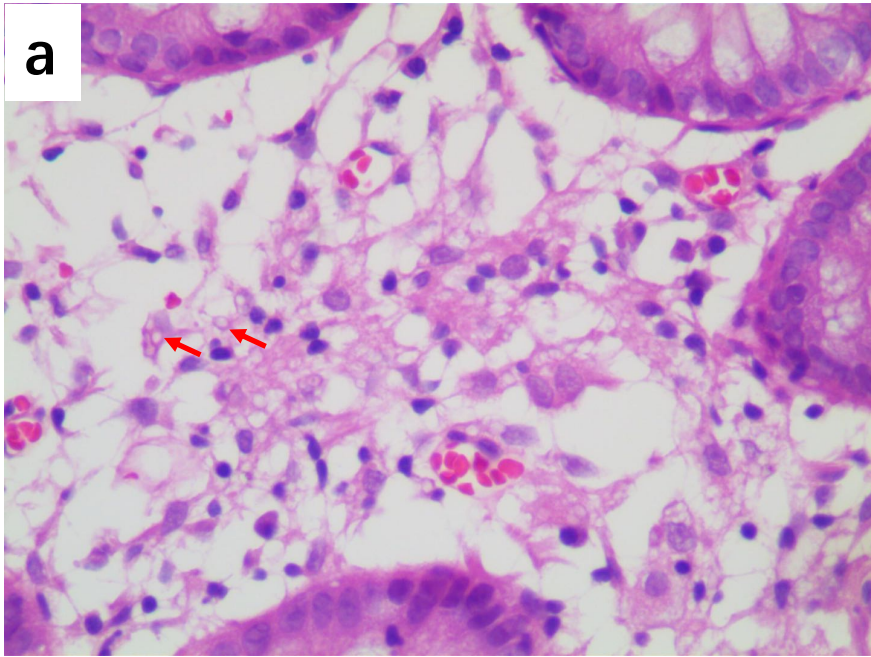


Figure S3. Colonic biopsy images after treatment. (a) HE stain (red arrows, $\times 400$). (b) PAS stain (negative, $\times 400$).

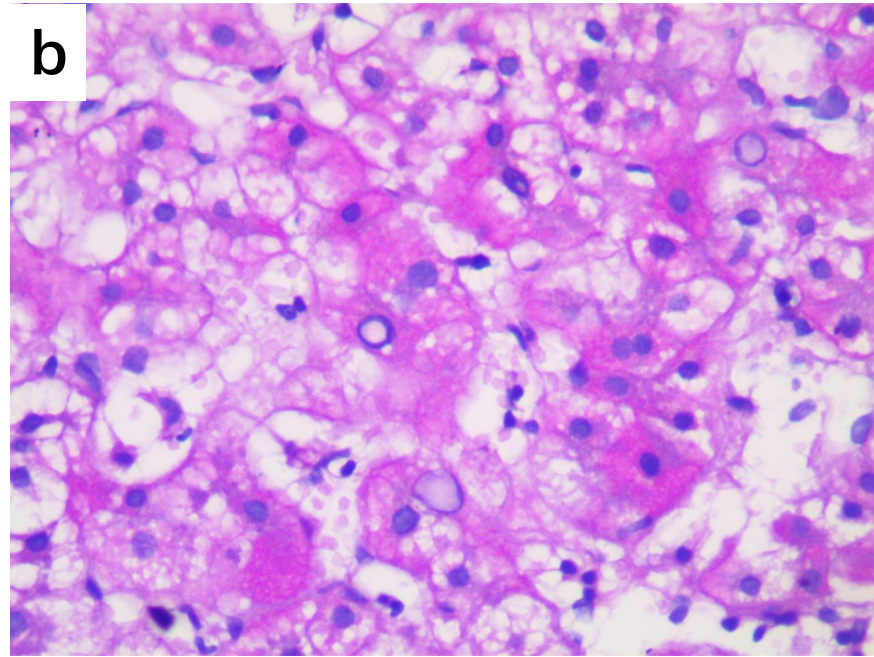
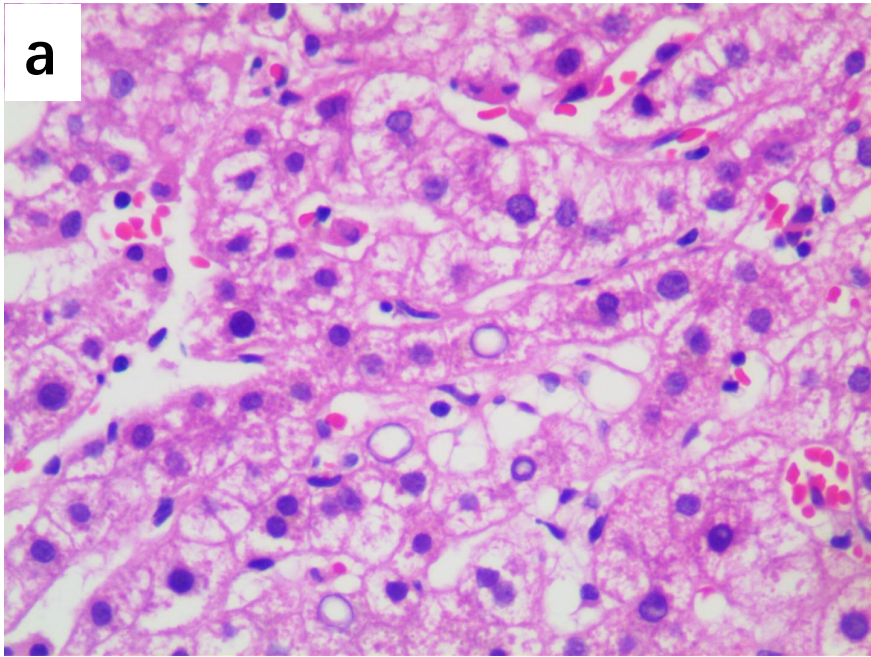


Figure S4. Liver biopsy images. (a) HE stain ($\times 400$). (b) PAS stain (negative, $\times 400$).

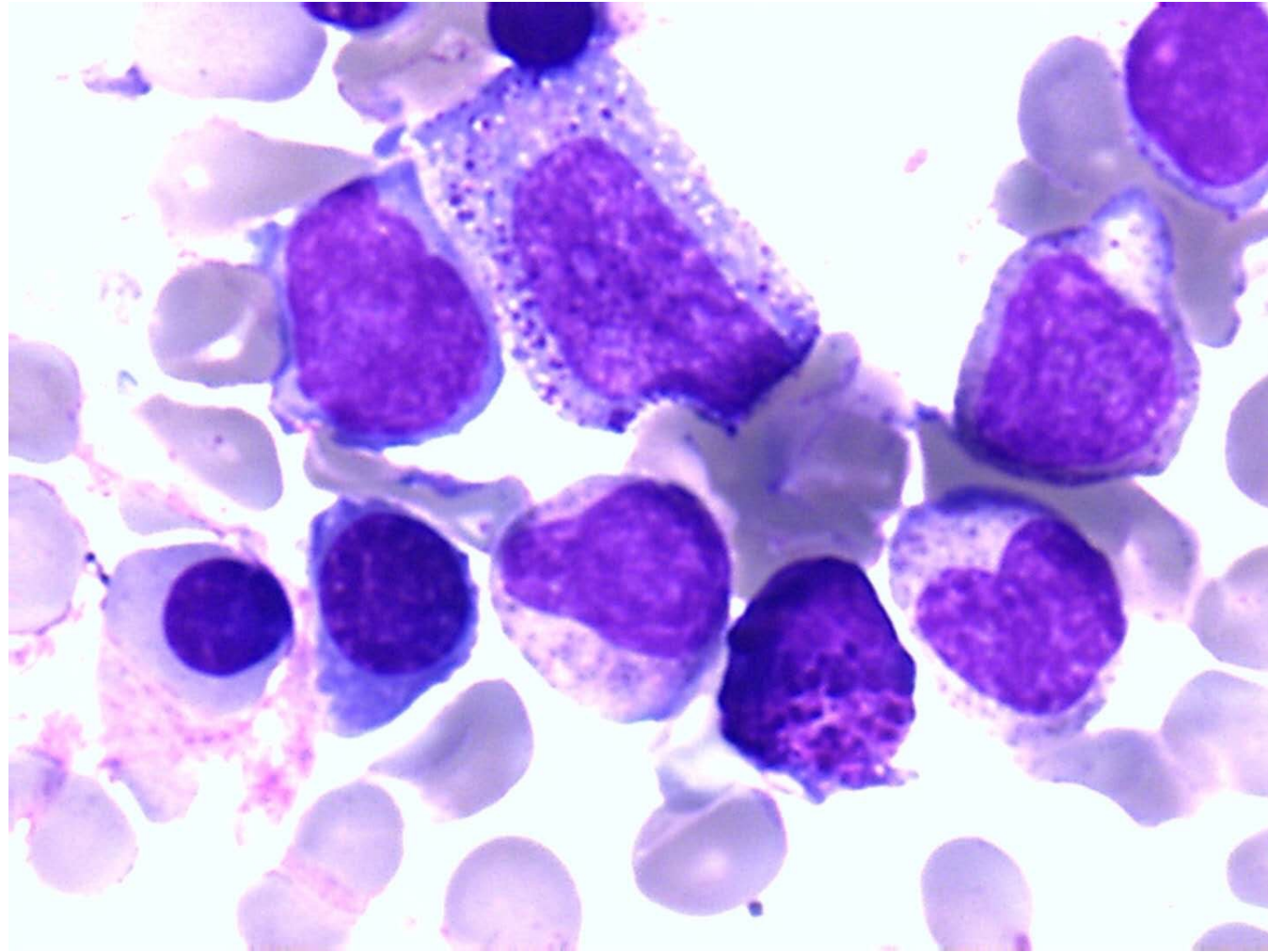


Figure S5. HE stain of bone marrow puncture images after treatment ($\times 1000$).