

胶1

p-P13K (60kD)

CT/HPV CT HPV control control HPV CT CT/HPV control HPV CT CT/HPV



Cat: (ABCAM) ab278545

Blocking: 5%BSA, 1h

First Antibody: Anti-p- P13K (1:1000), 4°C, 过夜

Second Antibody: HRP标记山羊抗兔

(1:5000)IgG(H+L), 1h

Expoure time:1s, 3s,10s,30s,60s.

胶2

p-AKT (60kD)

control HPV CT CT/HPV control HPV CT CT/HPV control HPV CT CT/HPV



Cat: (CST) 13038S

Blocking: 5%BSA, 1h

First Antibody: Anti- p-AKT (1:1000), 4°C, 过夜

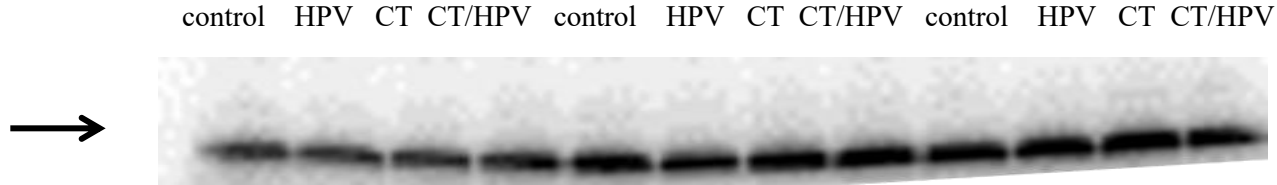
Second Antibody: HRP标记山羊抗兔

(1:5000)IgG(H+L), 1h

Expoure time: 1s, 3s, 10s, 30s, 60s.

胶3

AKT (59kD)



Cat: (CST) 9272S

Blocking: 5%BSA, 1h

First Antibody: Anti- AKT(1:1000), 4°C, 过夜

Second Antibody: HRP标记山羊抗兔

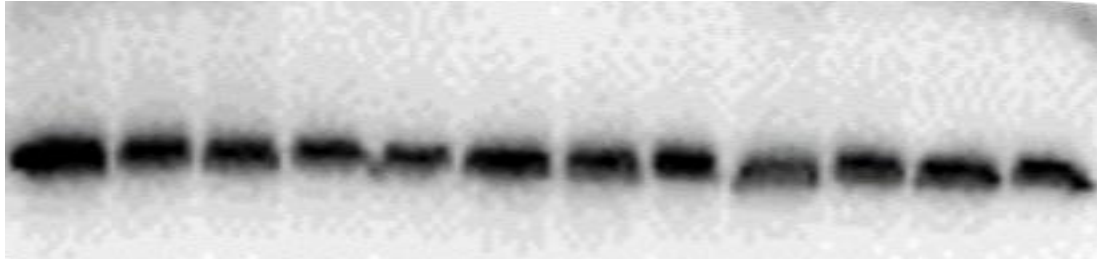
(1:5000)IgG(H+L), 1h

Expoure time: 1s, 3s, 10s, 30s, 60s.

胶4

GAPDH (37kD)

control HPV CT CT/HPV control HPV CT CT/HPV control HPV CT CT/HPV



Cat: (CST) 5174T

Blocking: 5%BSA, 1h

First Antibody: Anti- GAPDH (1:1000), 4°C, 过夜

Second Antibody: HRP标记山羊抗兔

(1:5000)IgG(H+L), 1h

Expoure time:1s, 3s,10s,30s,60s.

胶5

ERK1/2(44KD)

control HPV CT CT/HPV control HPV CT CT/HPV control HPV CT CT/HPV



Cat: (CST) 4695S

Blocking: 5%BSA, 1h

First Antibody:ERK1/2 (1:1000), 4°C, 过夜

Second Antibody: HRP标记山羊抗兔

(1:5000)IgG(H+L), 1h

Expoure time:1s, 3s,10s,30s,60s.

胶6

MKK4(44kD)

control HPV CT CT/HPV control HPV CT CT/HPV control HPV CT CT/HPV



Cat: (CST) 9152S

Blocking: 5%BSA, 1h

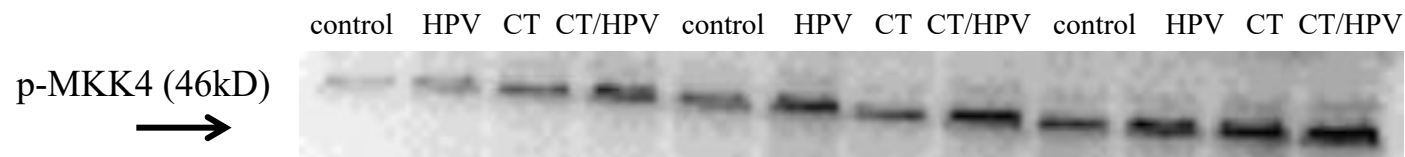
First Antibody: Anti- MKK4(1:1000), 4°C, 过夜

Second Antibody: HRP标记山羊抗兔

(1:5000)IgG(H+L), 1h

Expoure time:1s, 3s,10s,30s,60s.

胶7



Cat: (CST) 9151S

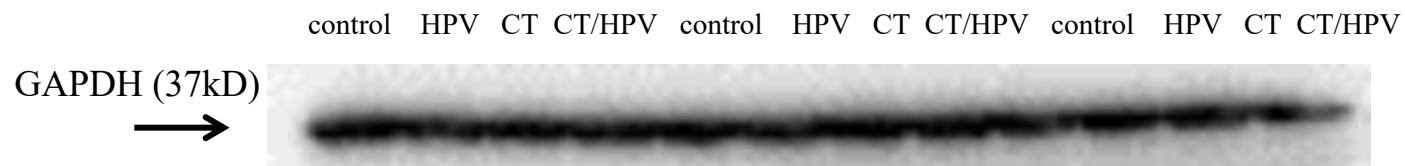
Blocking: 5%BSA, 1h

First Antibody:p-MKK4(1:1000), 4°C, 过夜

Second Antibody: HRP标记山羊抗兔
(1:5000)IgG(H+L), 1h

Expoure time: 1s, 3s, 10s, 30s, 60s.

胶8



Cat: (CST) 5174T

Blocking: 5%BSA, 1h

First Antibody:GAPDH (1:1000), 4°C, 过夜

Second Antibody: HRP标记山羊抗兔
(1:5000)IgG(H+L), 1h

Expoure time:1s, 3s,10s,30s,60s.

The image displays a complex, interconnected network of signals. A dense web of green filaments or structures is visible against a dark blue background. The green elements appear to form a central, somewhat circular or spiral-like pattern with many fine, radiating lines extending outwards. The overall appearance is that of a highly organized, possibly biological or material, structure. The text 'fig 4b-control' is overlaid in the bottom right corner in a white, sans-serif font.

fig 4b-control

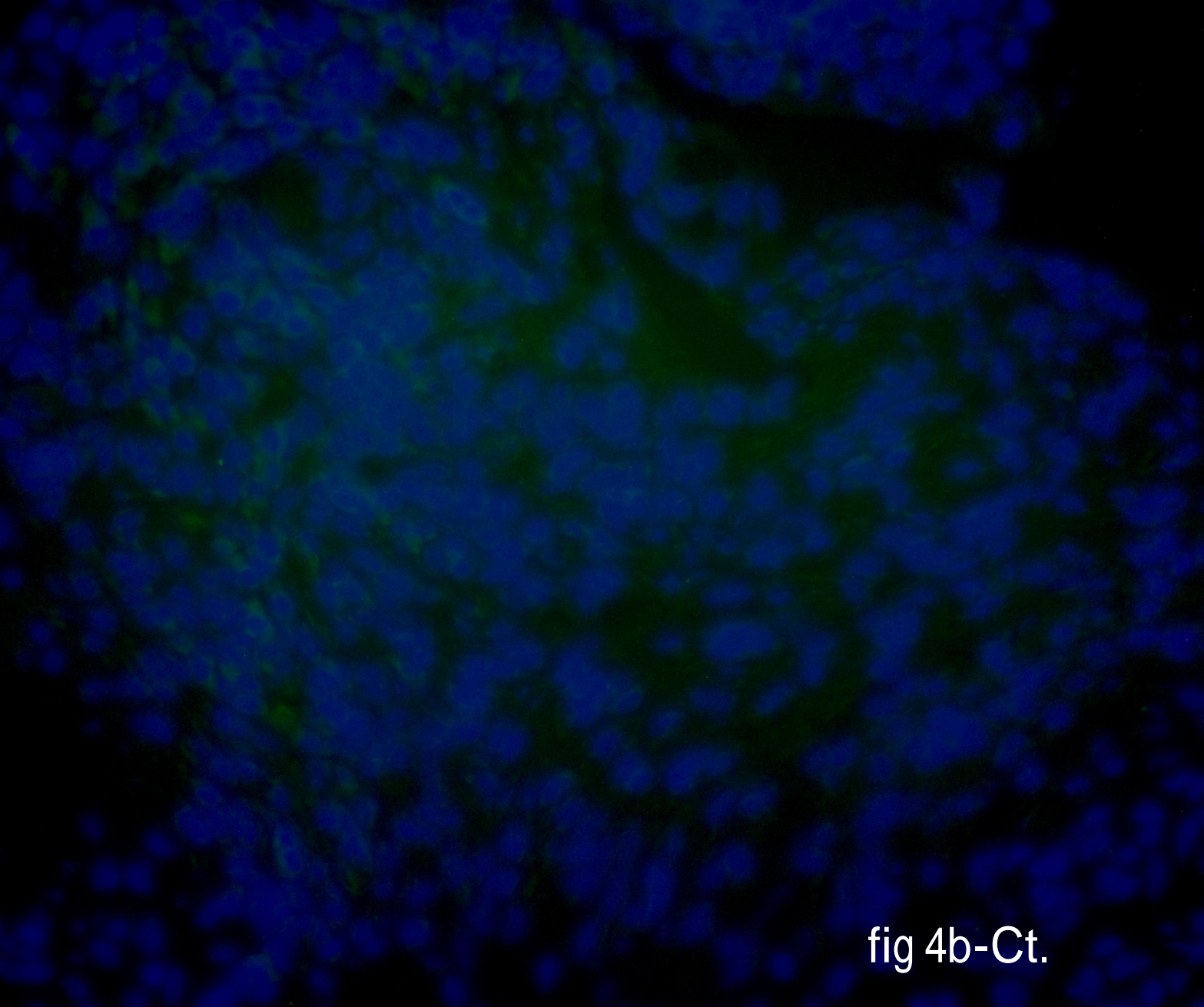


fig 4b-Ct.

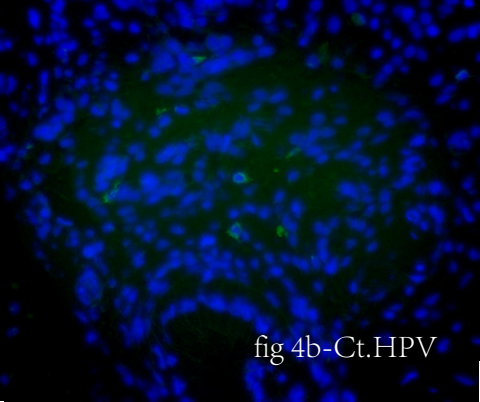


fig 4b-Ct.HPV

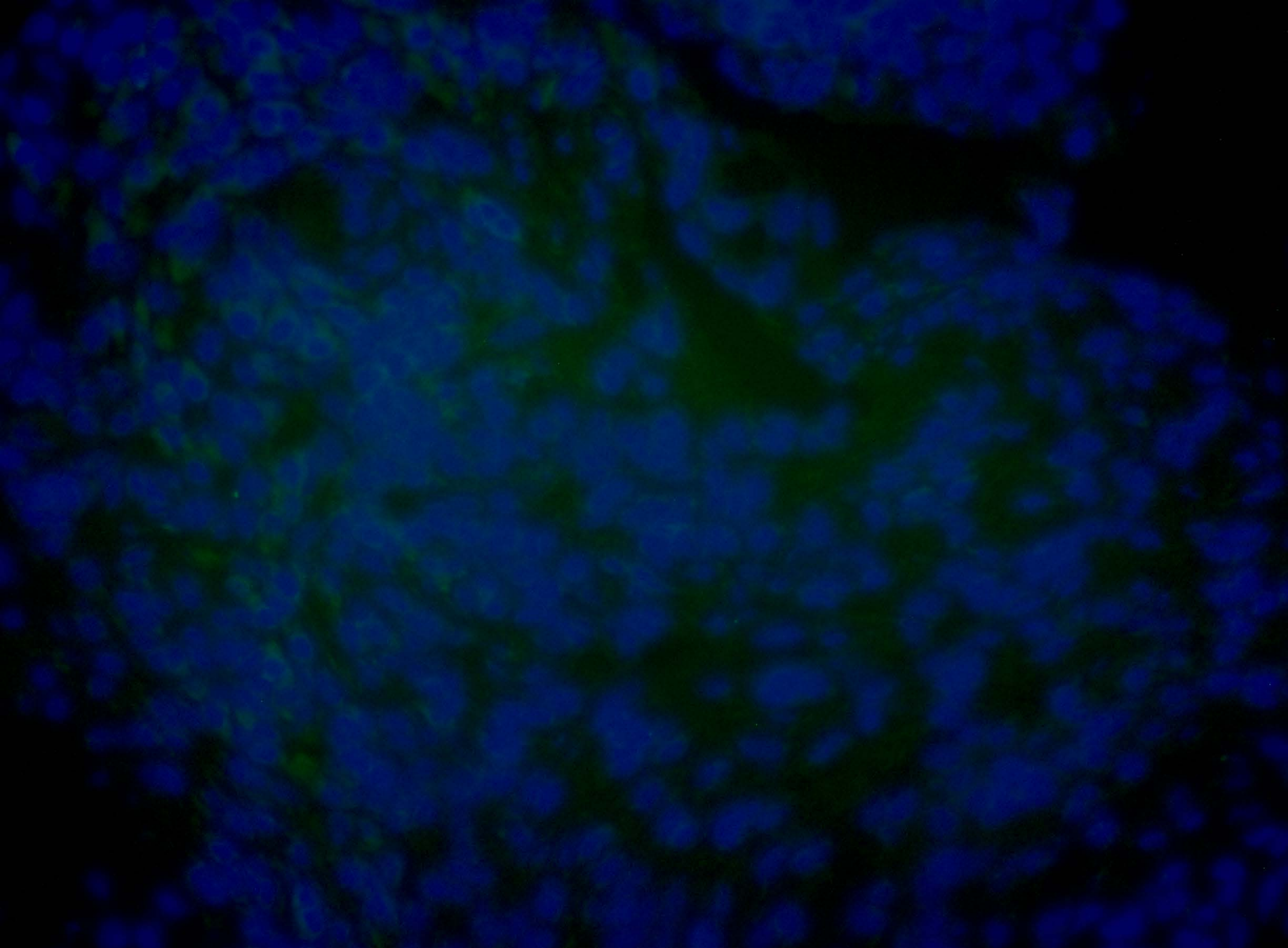


fig 4b-Ct

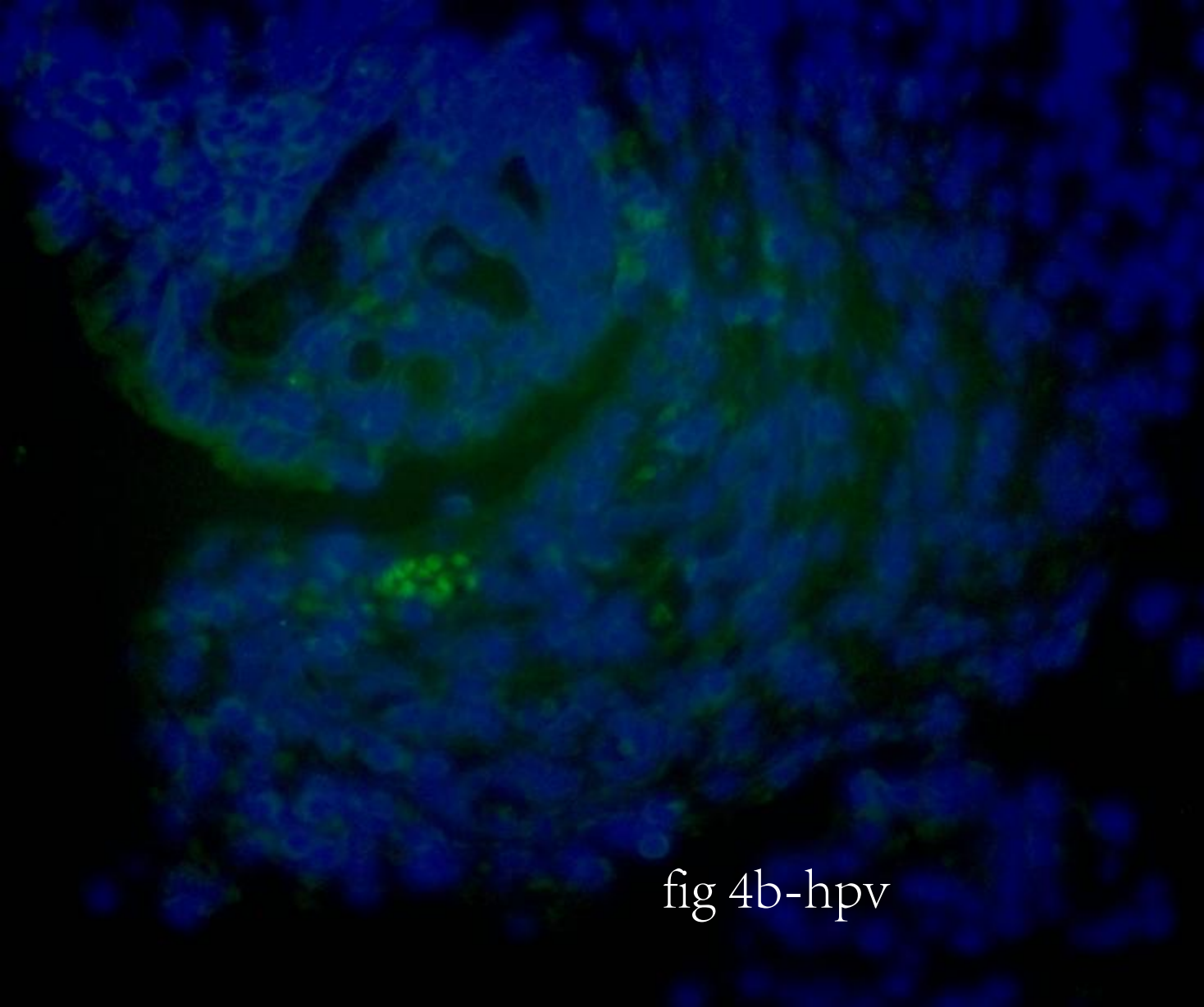


fig 4b-hpv

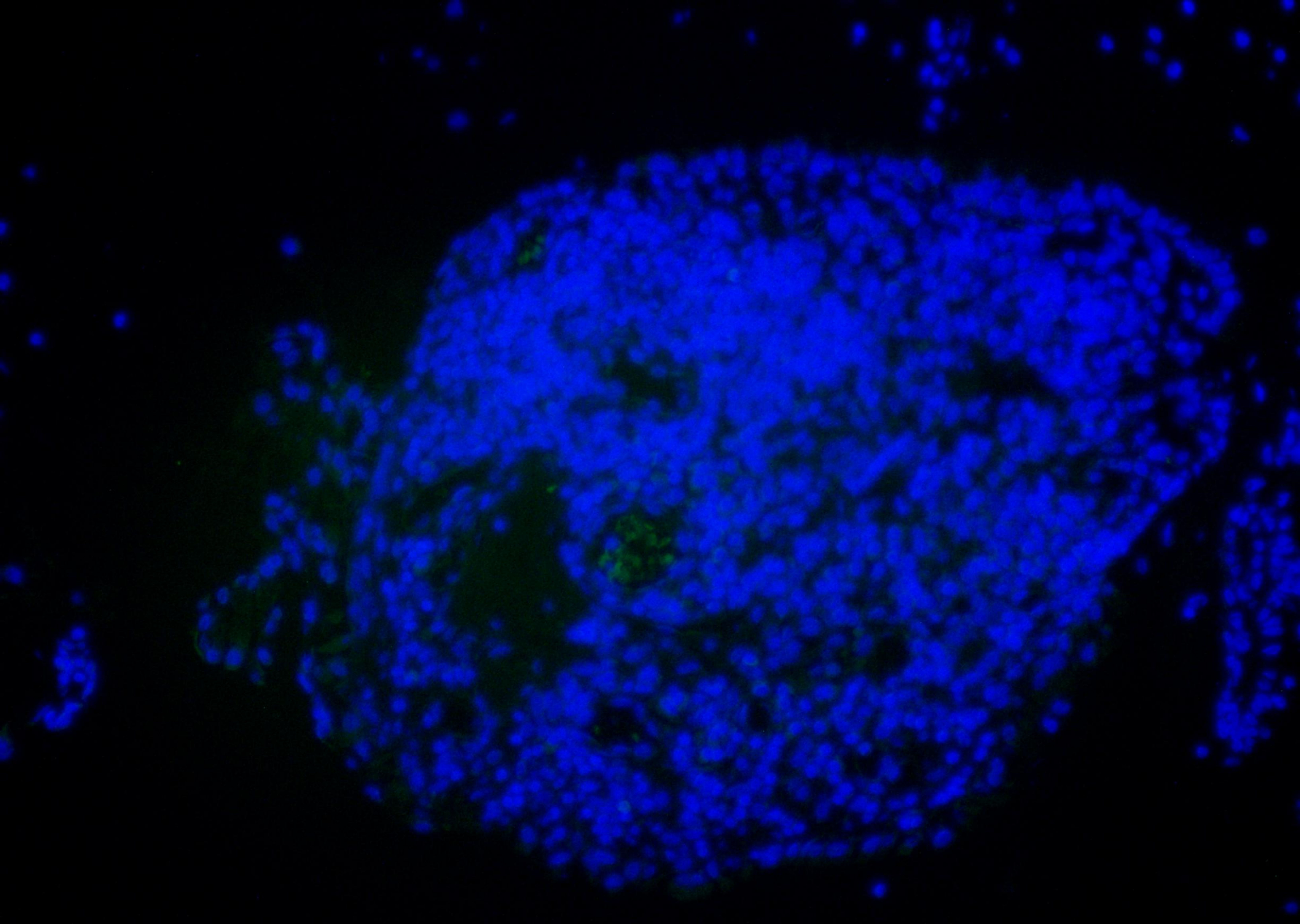


fig 5a-control

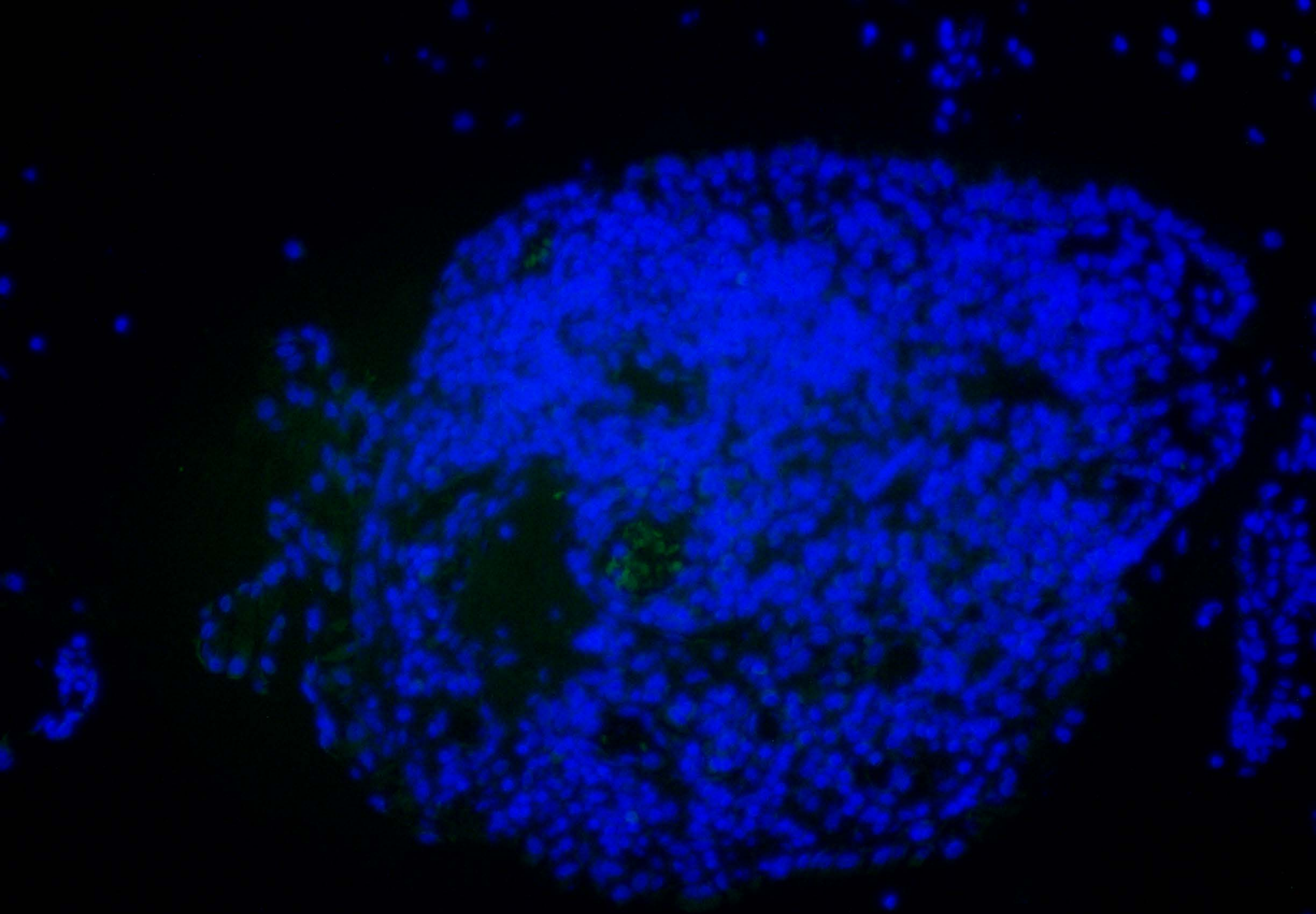


fig 5a-control

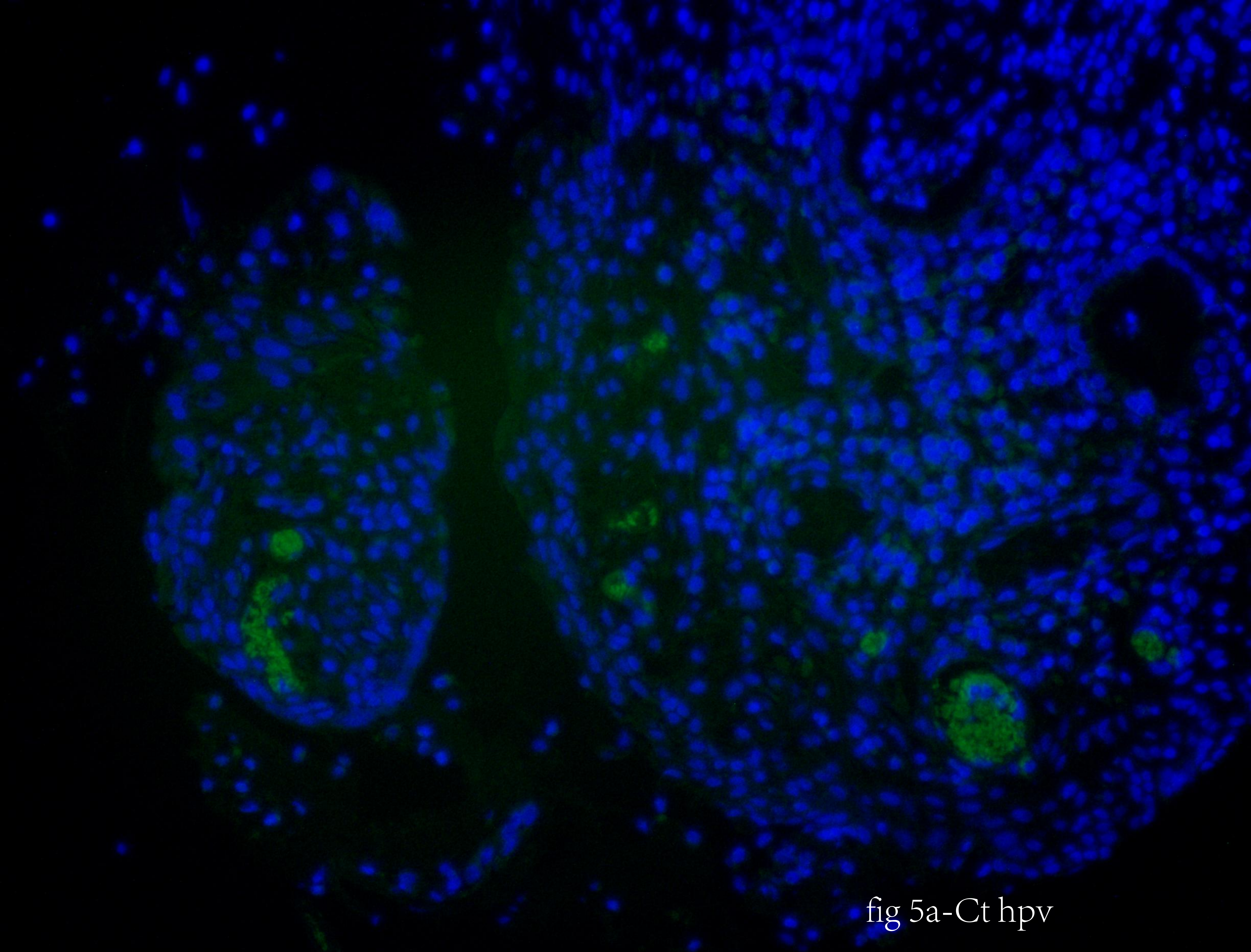


fig 5a-Ct hpv

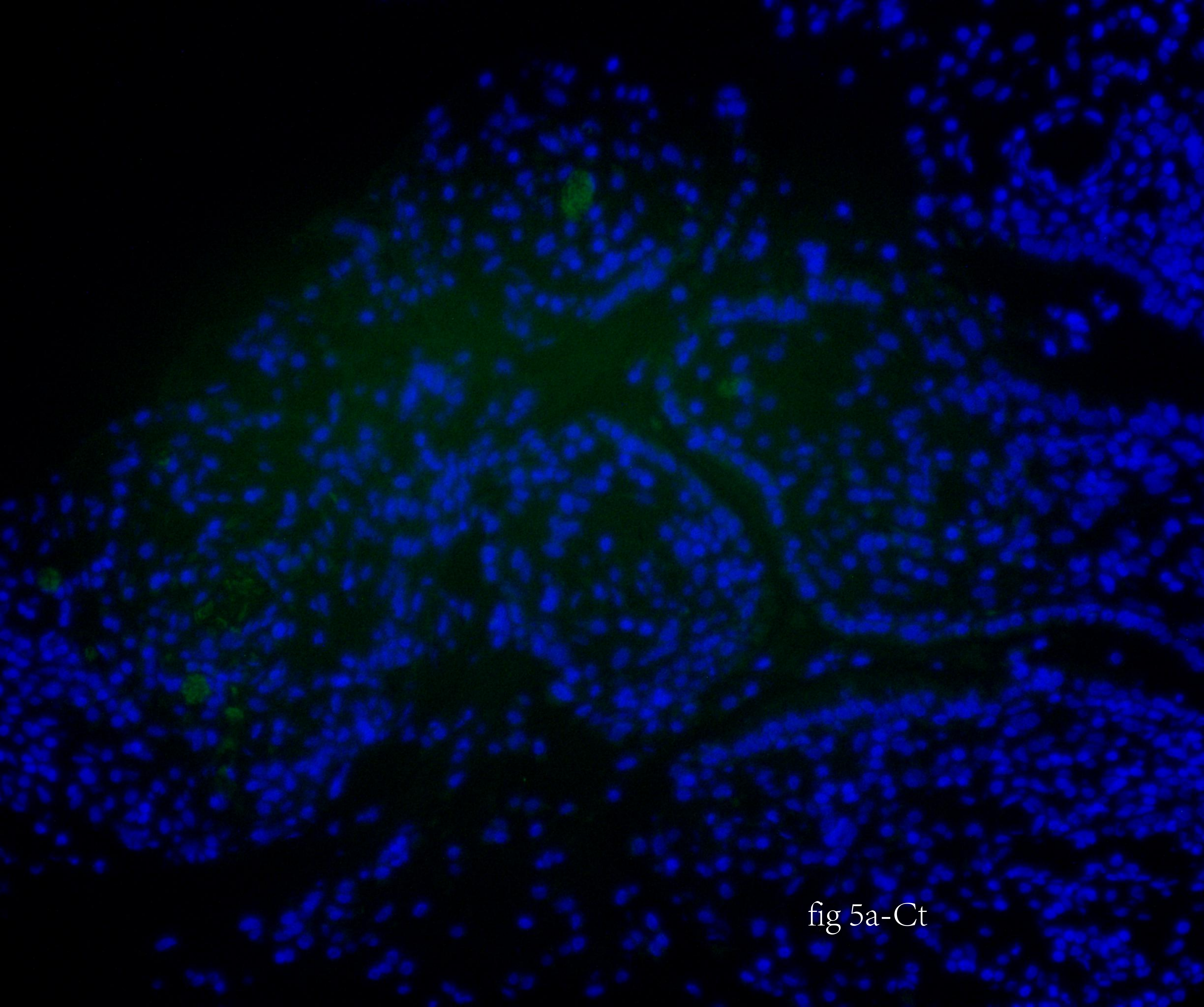


fig 5a-Ct

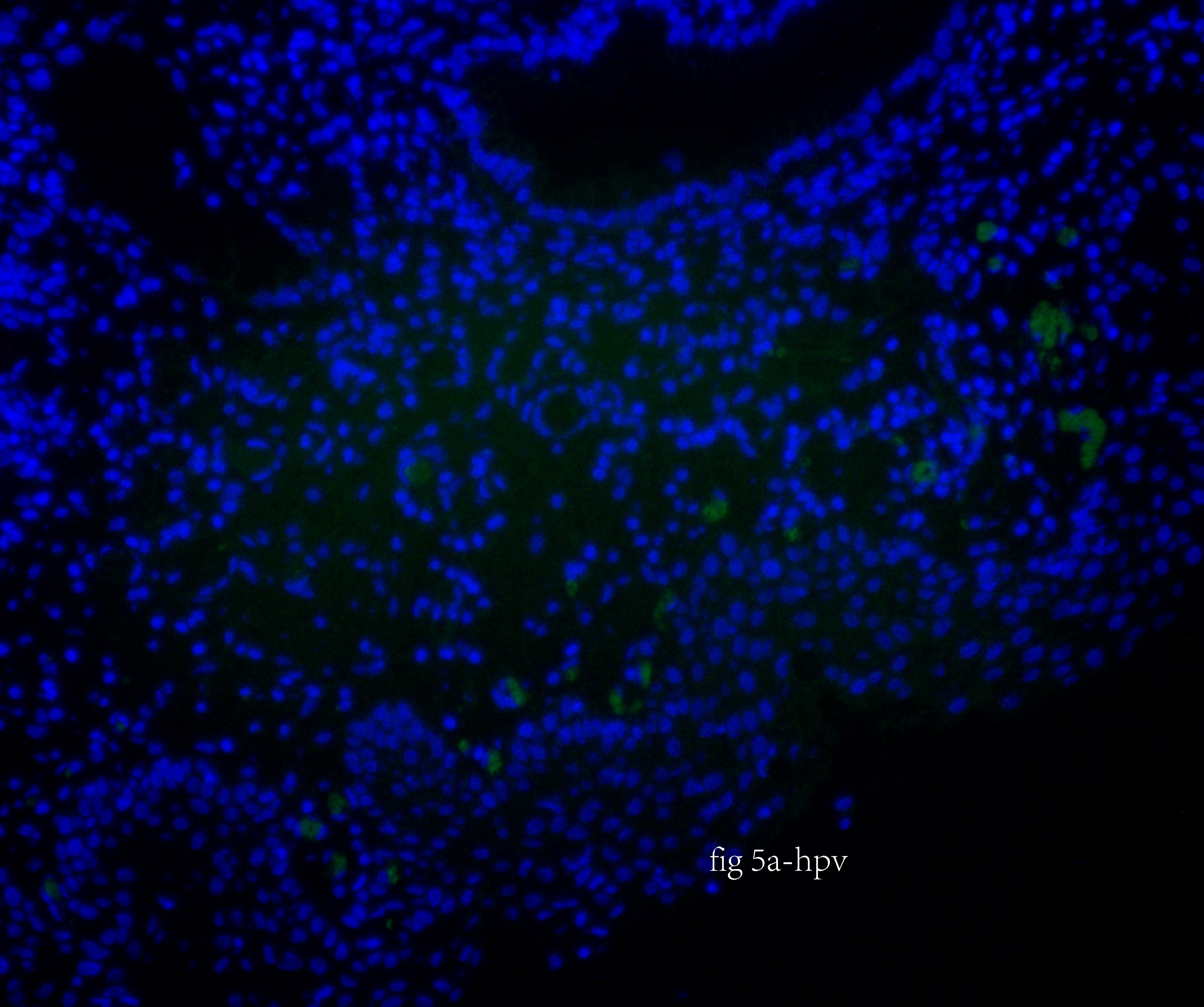


fig 5a-hpv

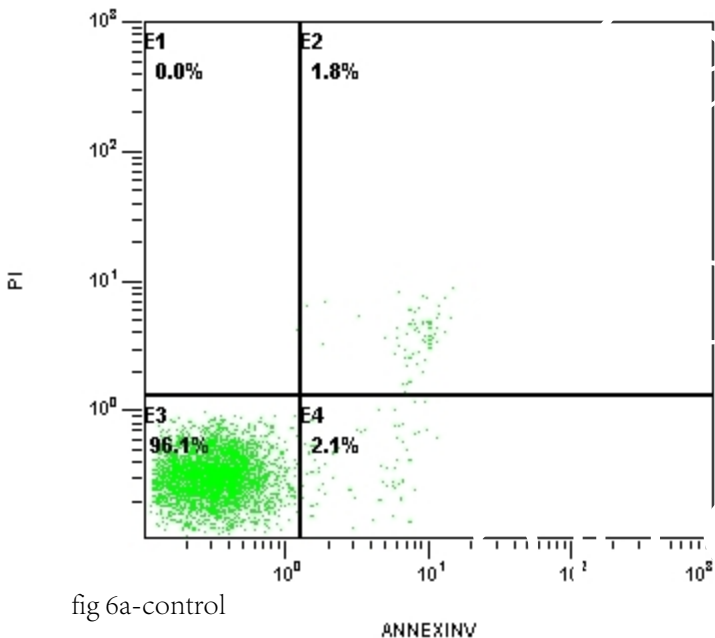


fig 6a-control

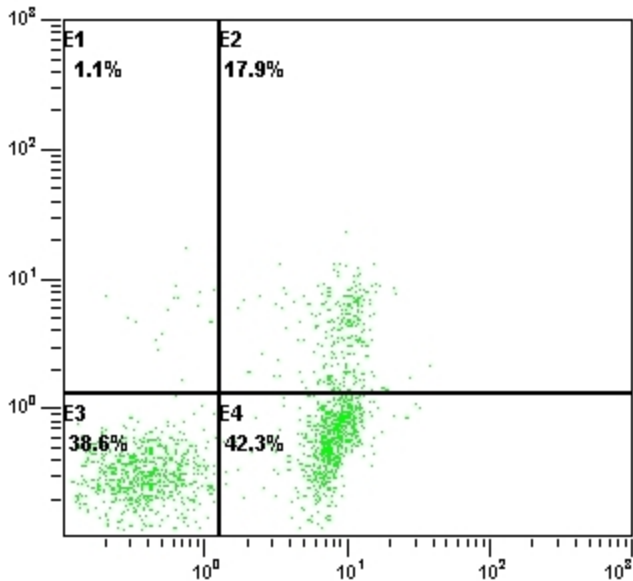


fig 6a-ct.hpv

ANNEXIN V

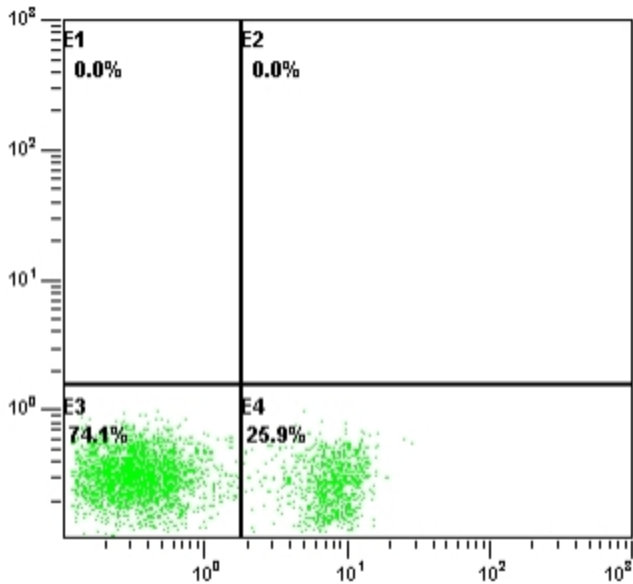


fig 6a-ct

ANNEXIN V

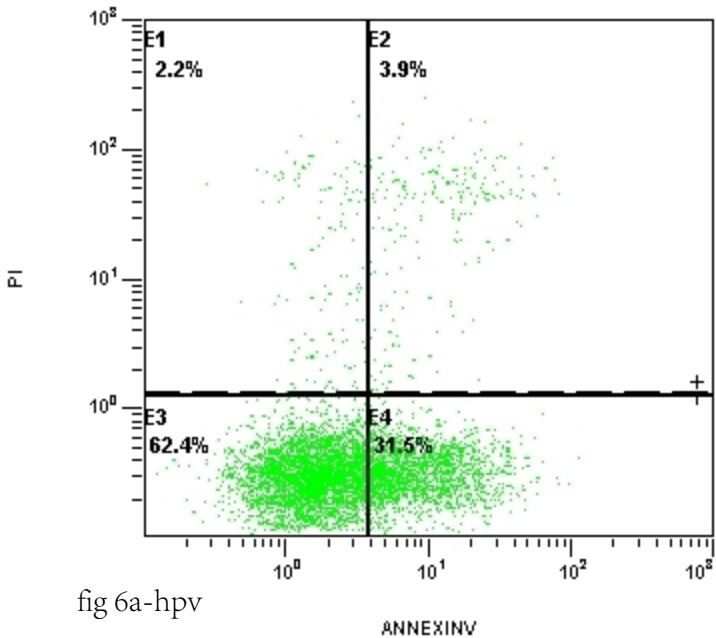


fig 6a-hpv

[P1] CD3 FITC-A / CD4 PE-Cy7-A

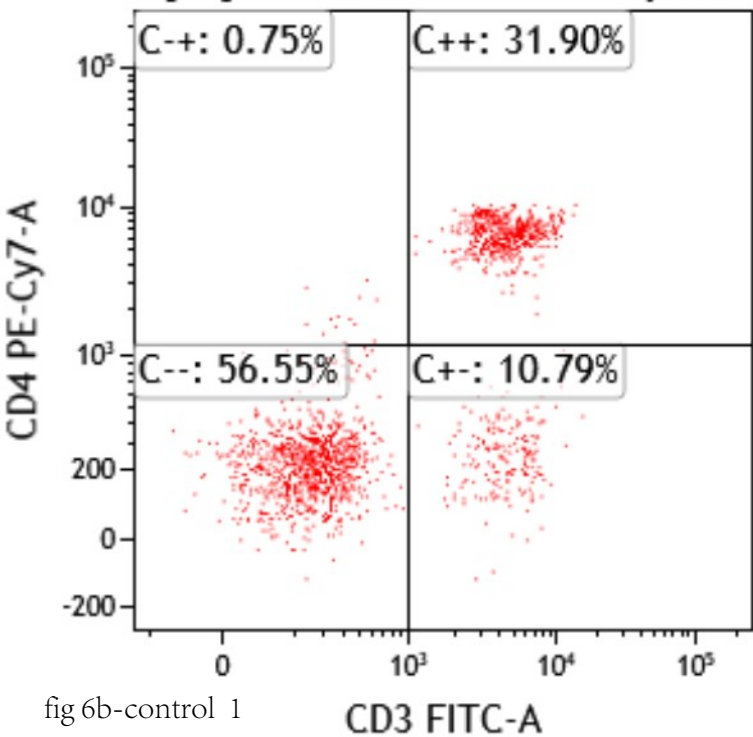


fig 6b-control 1

[P1] CD3 FITC-A / CD8 APC-Cy7-A

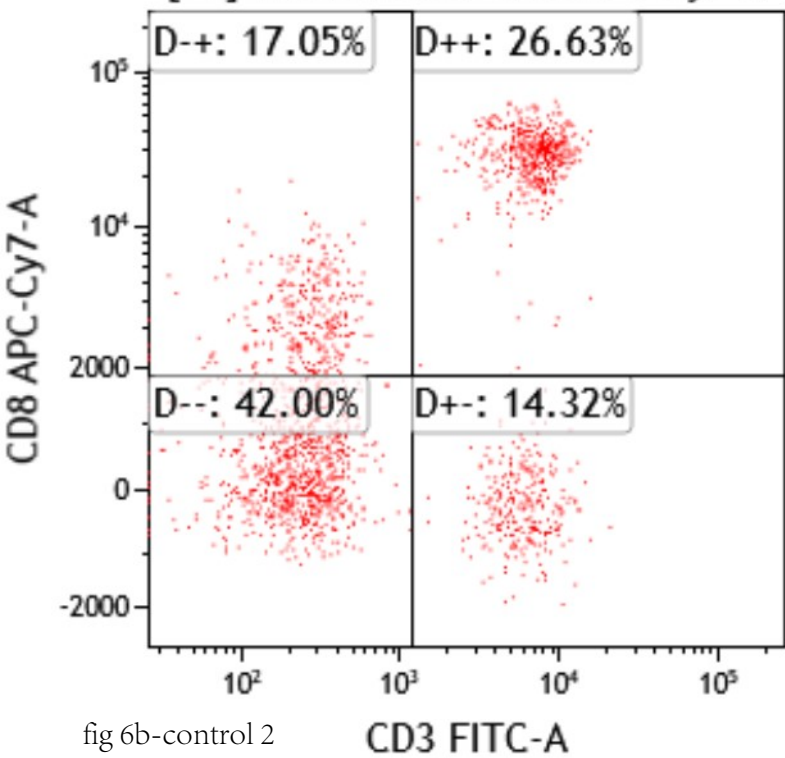


fig 6b-control 2

[P1] CD3 FITC-A / CD4 PE-Cy7-A

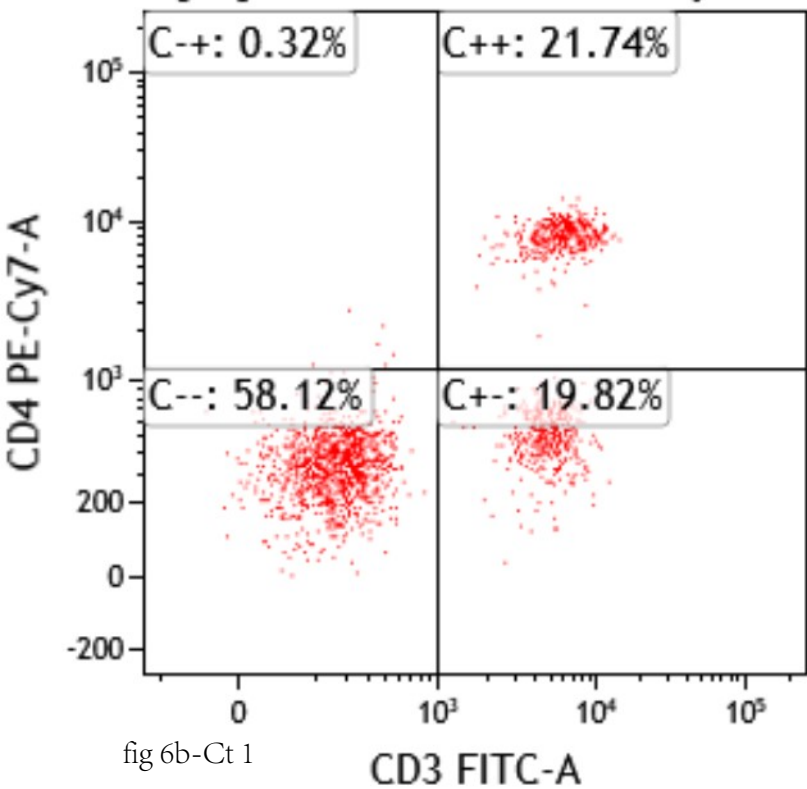


fig 6b-Ct 1

[P1] CD3 FITC-A / CD8 APC-Cy7-A

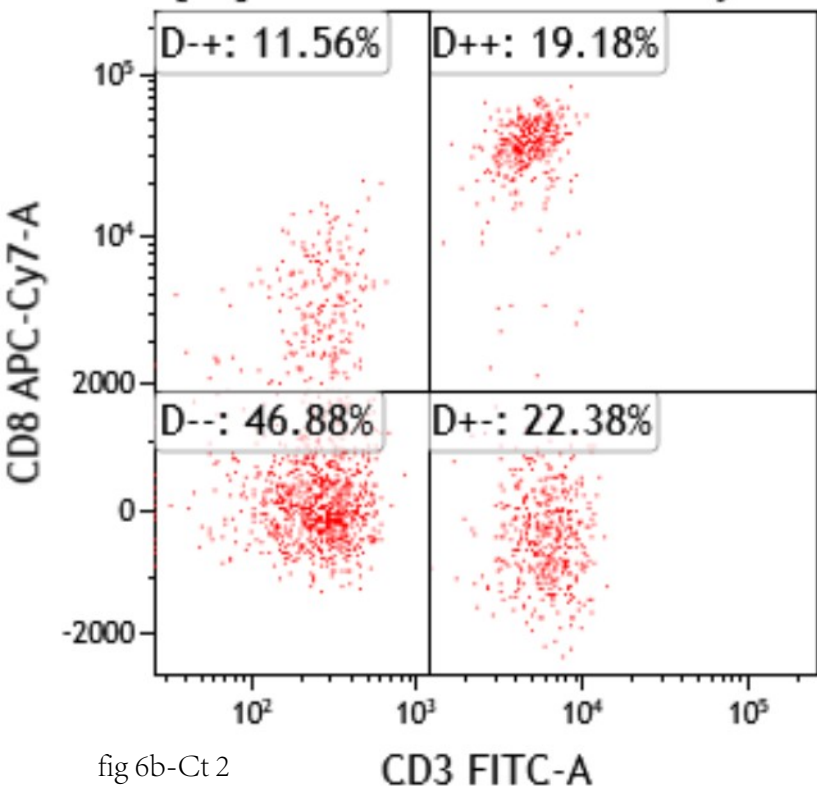


fig 6b-Ct 2

11lichengguo013.001

[P1] CD3 FITC-A / CD4 PE-Cy7-A

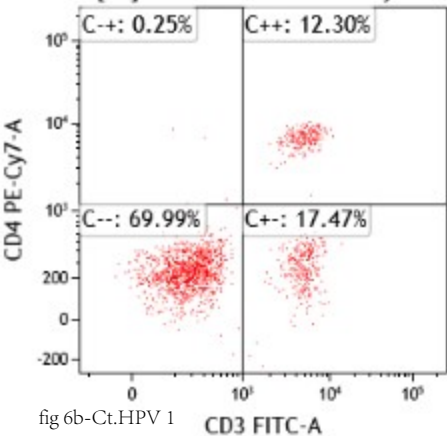


fig 6b-Ct.HPV 1

[P1] CD3 FITC-A / CD8 APC-Cy7-A

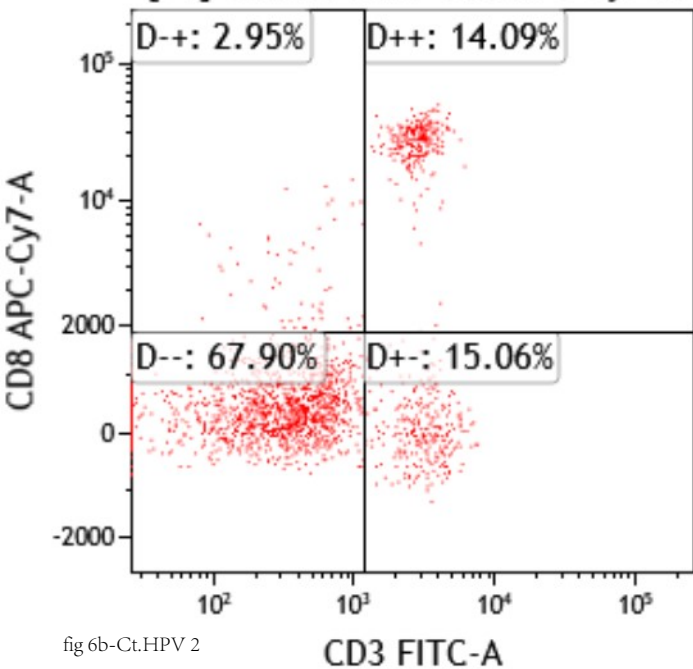


fig 6b-Ct.HPV 2

[P1] CD3 FITC-A / CD4 PE-Cy7-A

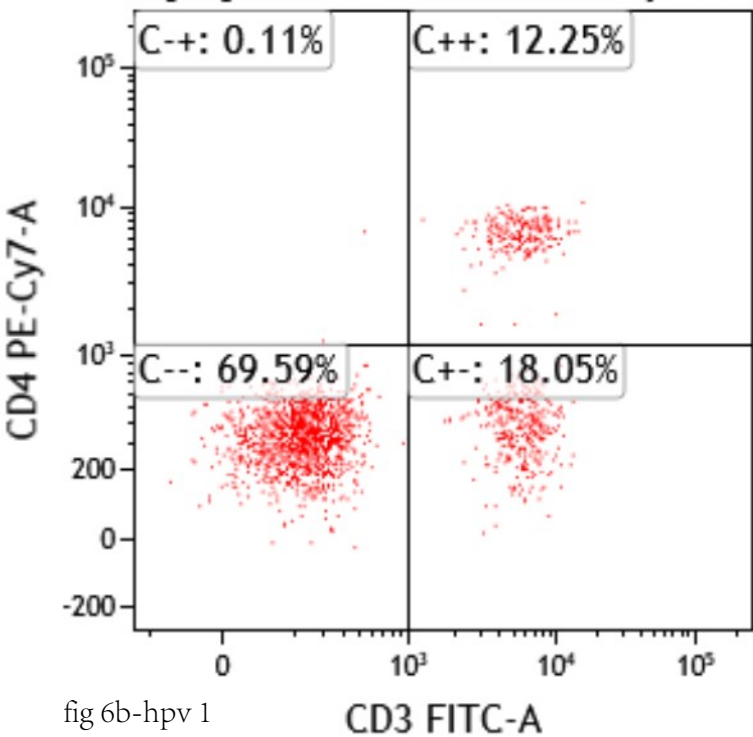


fig 6b-hpv 1

[P1] CD3 FITC-A / CD8 APC-Cy7-A

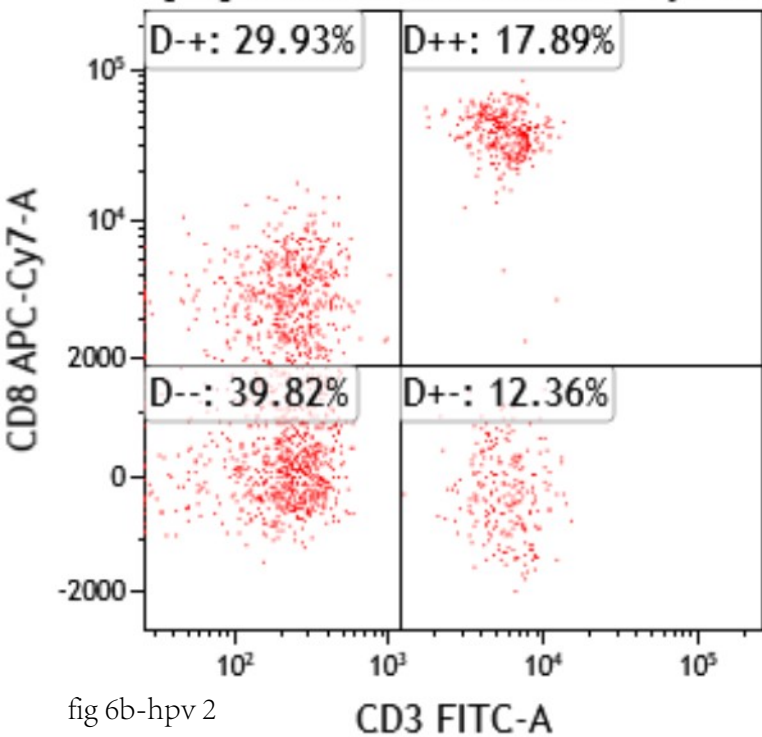


fig 6b-hpv 2