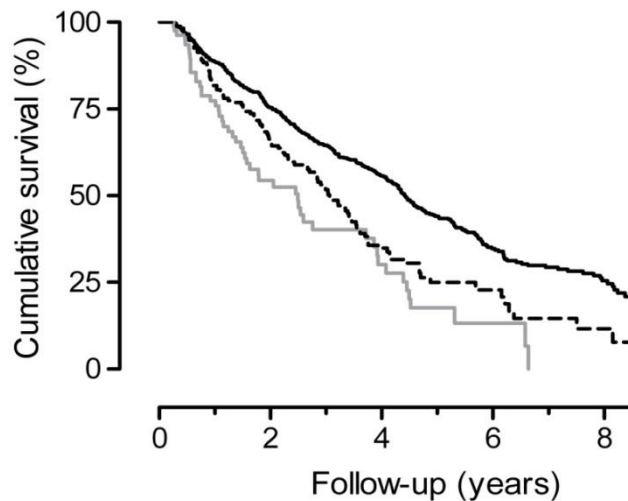


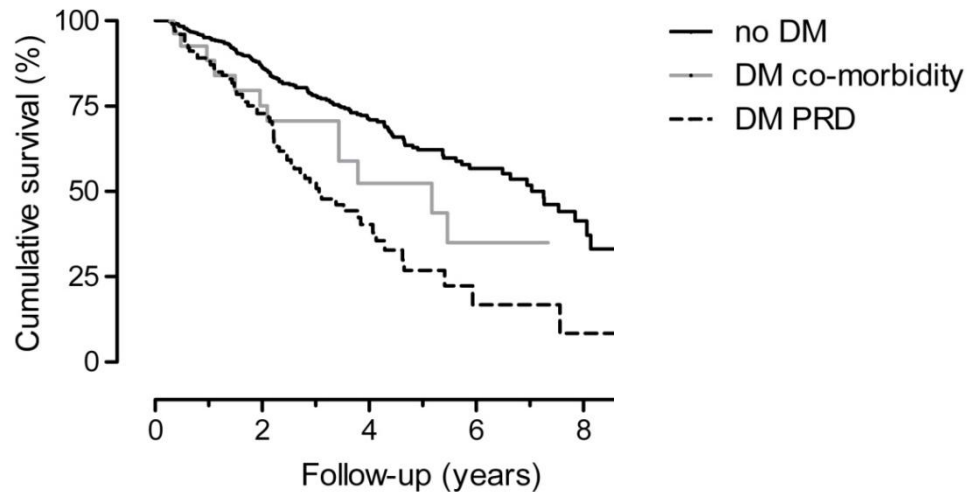
A. Hemodialysis patients



Number of patients at risk

	0	2	4	6	8
No DM	910	489	227	72	24
DM as PRD	179	91	29	9	2
DM as comorb	80	28	11	2	0

B. Peritoneal dialysis patients



Number of patients at risk

	0	2	4	6	8
No DM	555	303	144	42	6
DM as PRD	102	51	13	3	1
DM as comorb	27	16	7	2	0