

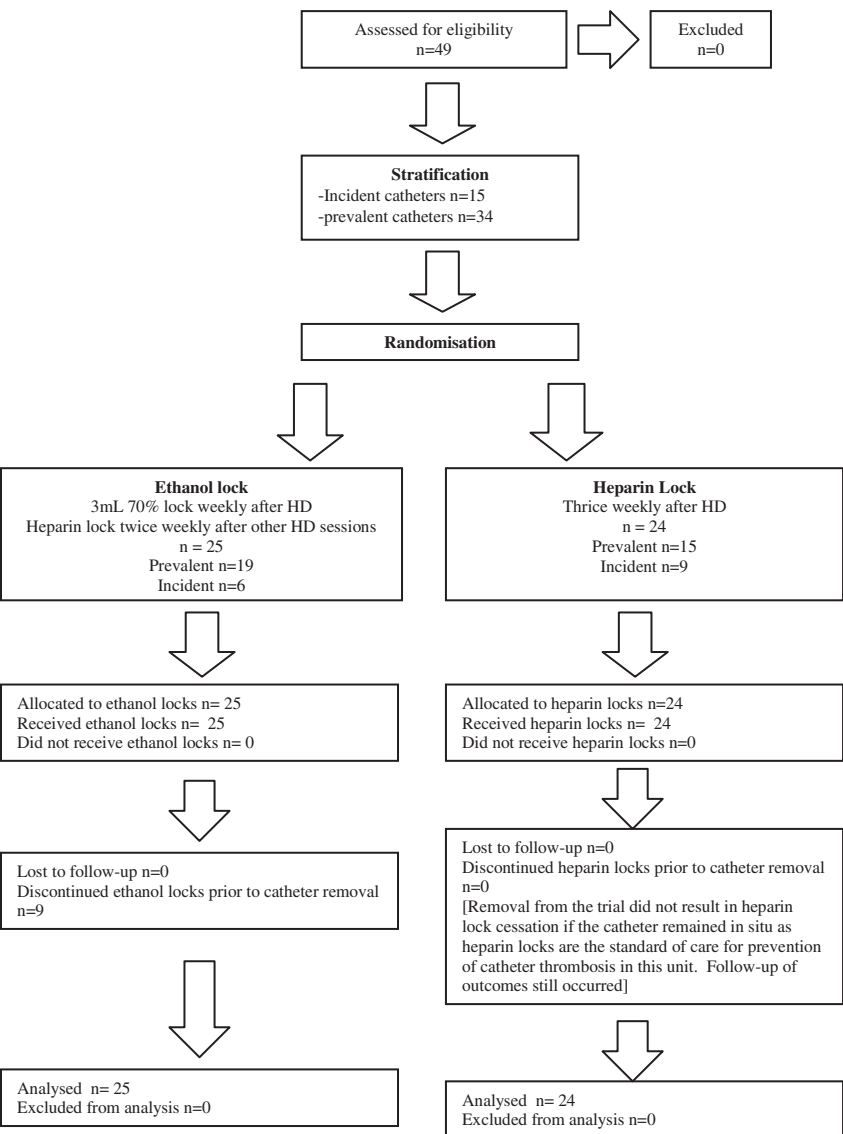
Patient Population

Inclusion:

- incident or prevalent HD patients with tunnelled intravenous catheters
- able to give informed consent

Exclusion:

- intolerance to ethanol
- personal, cultural or other objection to the use of ethanol
- history of an exit site, tunnel, or bloodstream infection associated with the current catheter
- Pregnancy



Endpoints

Primary Endpoint

time to first episode of catheter-related blood stream infection (CRBSI)

Secondary Endpoints – whether intervention results in:

- adverse reactions
- incidence of CRB caused by different pathogens
- time to infection-related catheter removal
- time to exit site infection