

Plate A: Patients' purchase

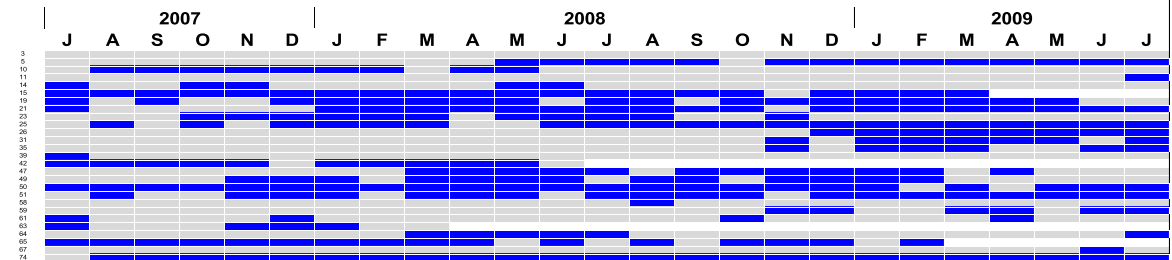


Plate B: Documentation by nurses

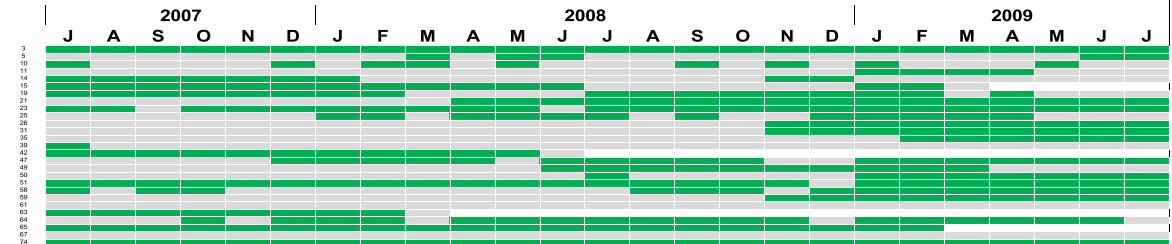


Plate C: Adherence

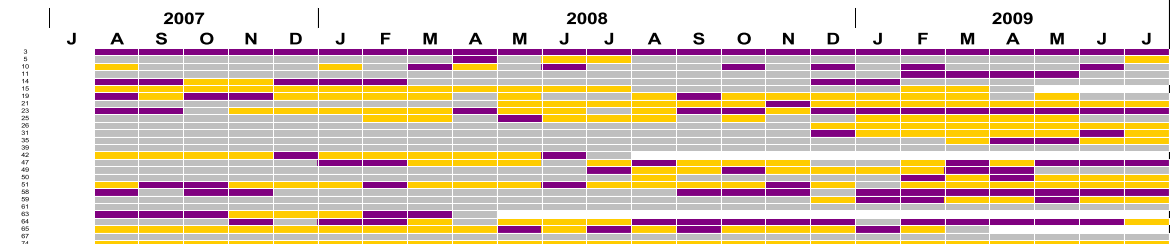
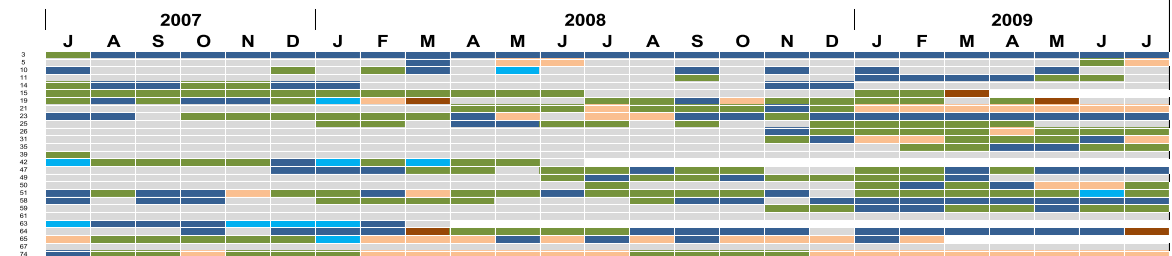


Plate D: Relationship between nurses' documentation and patient purchase



Color coding

	Color coding
All plates	Deceased
Plate A	Patient purchased drug
	Drug not purchased
Plate B	Documentation in nurse's report
	The drug was not mentioned in the nurse's monthly report
plate C	Compliance
	Non compliance
Plate D	Nurse documentation is the same as patient purchased.
	Nurse reported a lower dose than the patient purchased.
	Nurse documented that the patient does not use the drug, when he was in fact it was purchased.
	Nurse documented that the patient uses more of the drug than purchased.
	Nurse documented use of a drug the patient did not purchase.