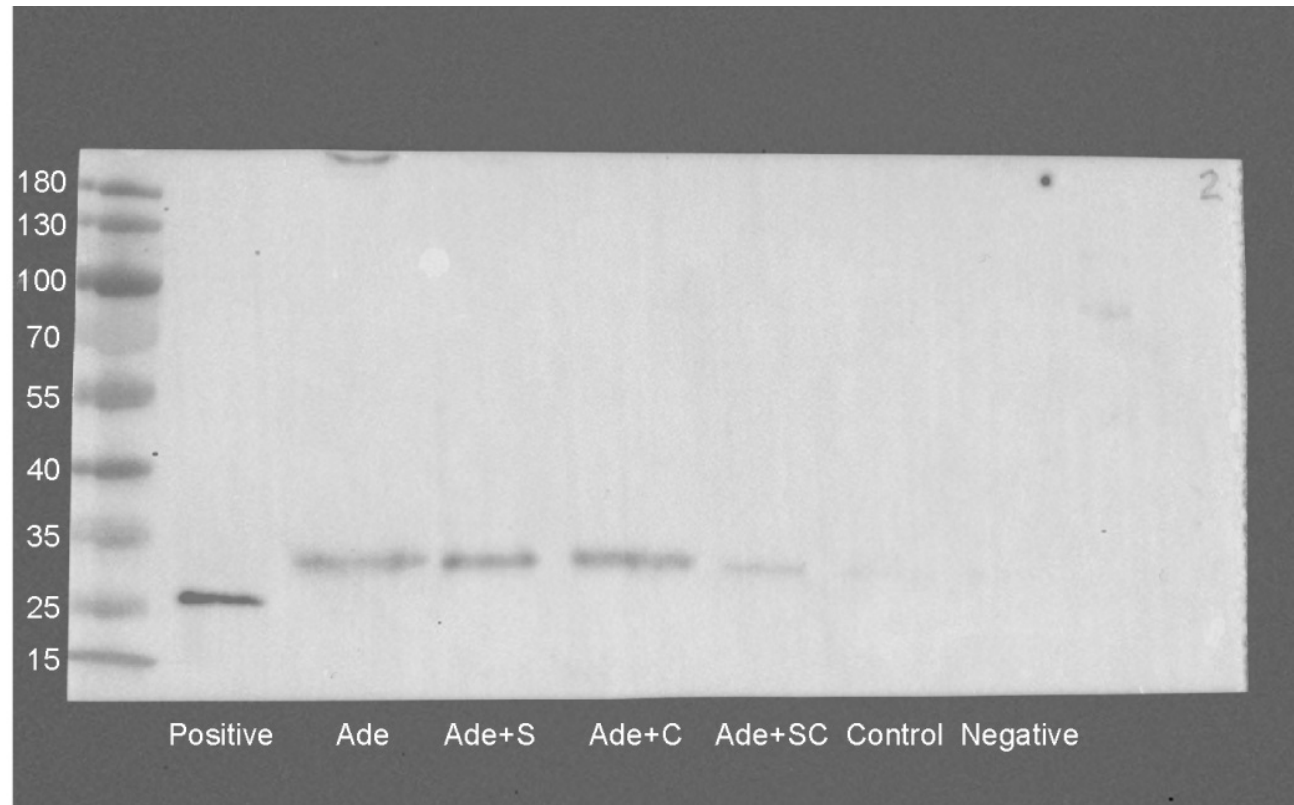
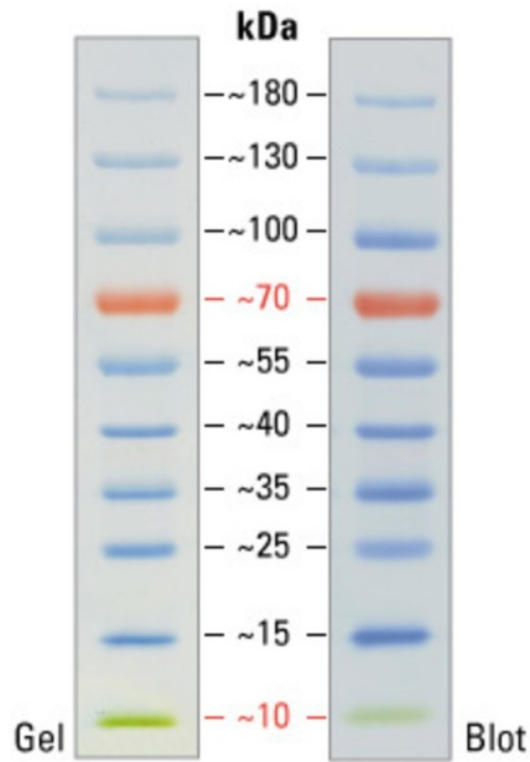


## Endothelin A Receptor Blocker and Calcimimetic in the Adenine Rat Model of Chronic Renal Insufficiency

Suvi Törmänen<sup>a</sup>, Ilkka Pörsti<sup>a,b</sup>, Päivi Lakkisto<sup>c,d</sup>, Ilkka Tikkanen<sup>c,e</sup>, Onni Niemelä<sup>a,f</sup>, Timo Paavonen<sup>a,g</sup>, Jukka Mustonen<sup>a,b</sup>, and Arttu Eräranta<sup>a</sup>



**Additional Figure 1.** Representative original blot of TGF- $\beta$ 1 Western blotting; study groups as in Figure 1. Thermo Page Ruler 26616 was used as molecular weight marker, recombinant human TGF- $\beta$ 1 (R&D cat nro 240-B) was used as positive control in non-reducing conditions, and rat heart tissue was used as negative control. The observed ~2kDa difference in molecular weight is due to interspecies variation in TGF- $\beta$ 1 protein.