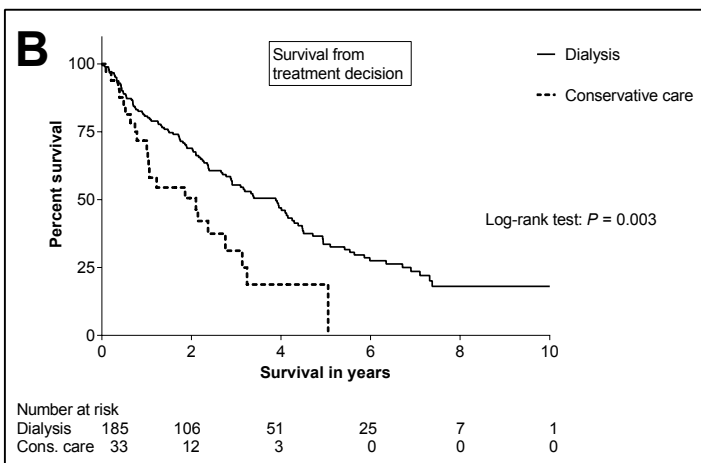
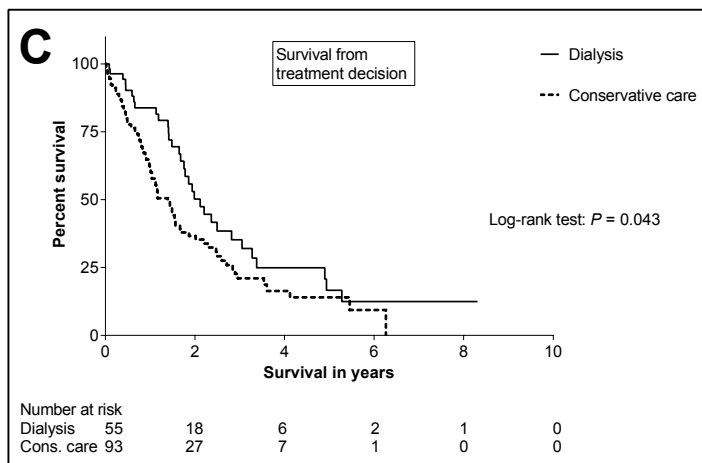


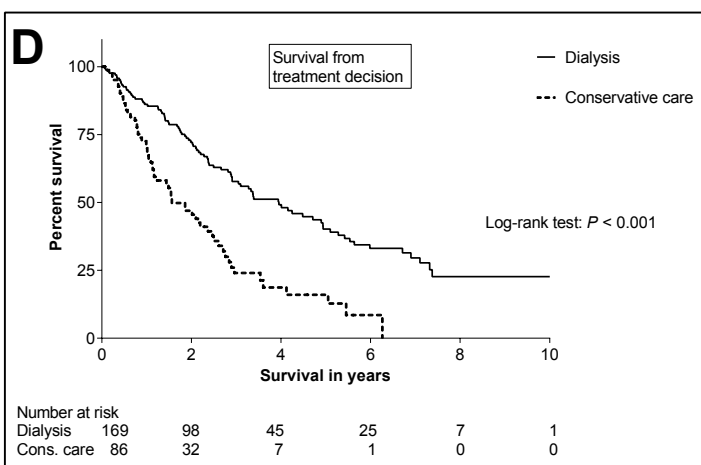
### Age 70-80 years



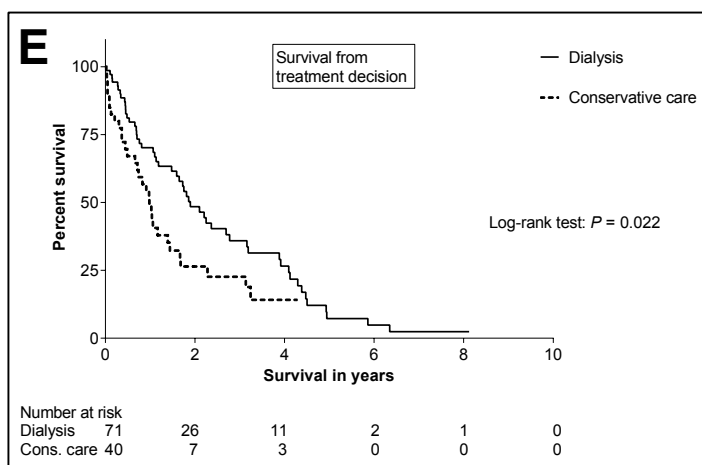
### Age $\geq 80$ years



### No or intermediate comorbidity



### Severe comorbidity



**Additional Figure 1. Kaplan-Meier survival curves comparing patients  $\geq 70$  years choosing dialysis or conservative care, from treatment decision:** overall comparison of both groups (part A; median survival:3.2 [1.5-6.0] versus 1.4 [0.7-2.9] years); after stratification of age (B and C); after stratification of Davies comorbidity scores with no and intermediate comorbidity taken together versus severe comorbidity (D and E).