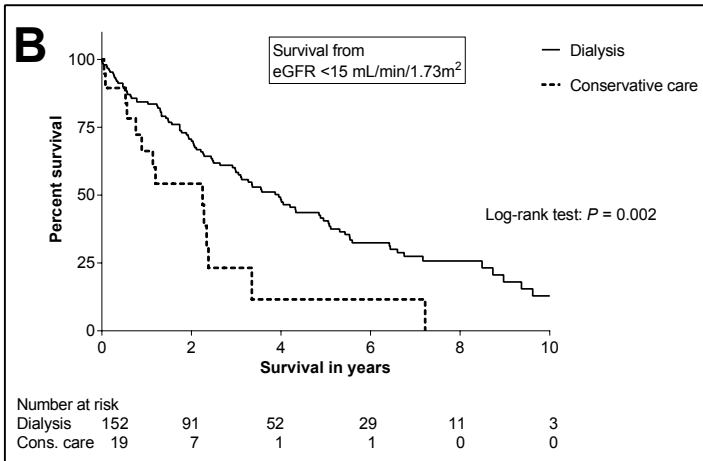
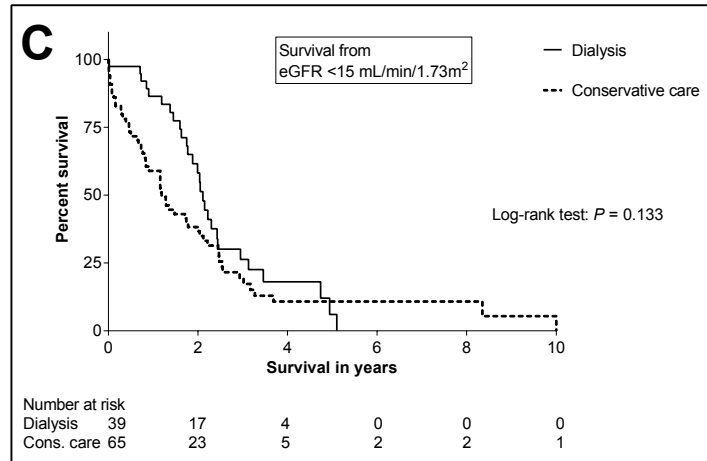


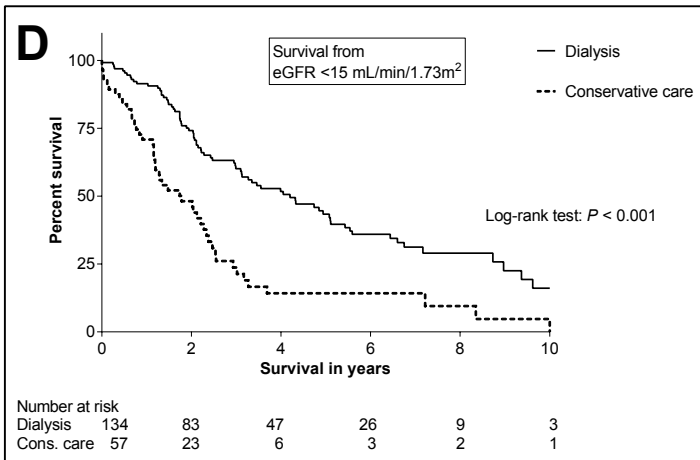
Age 70-80 years



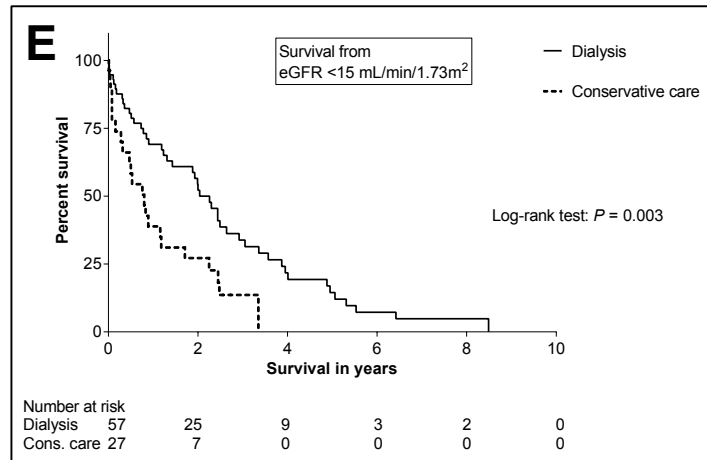
Age ≥80 years



No or intermediate comorbidity



Severe comorbidity



Additional Figure 2. Kaplan-Meier survival curves comparing patients ≥70 years choosing dialysis or conservative care, from eGFR <15 mL/min/1.73m²: overall comparison of both groups (part A; median survival: 3.1 [1.7-6.4] versus 1.3 [0.5-2.5] years); after stratification of age (B and C); after stratification of Davies comorbidity scores with no and intermediate comorbidity taken together versus severe comorbidity (D and E). The total number of patients included in this analysis was lower because some patients died before eGFR dropped <15 mL/min/1.73m².