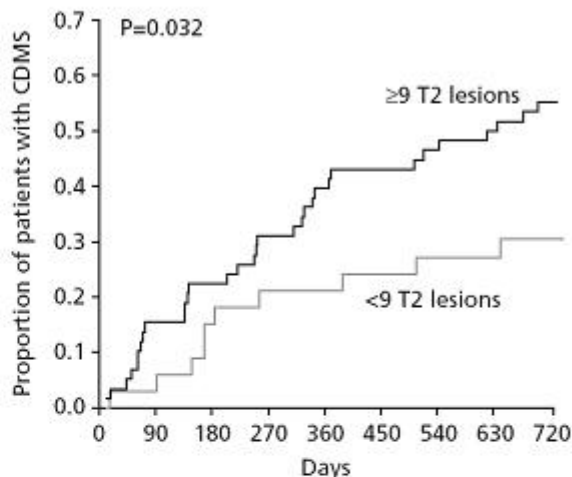


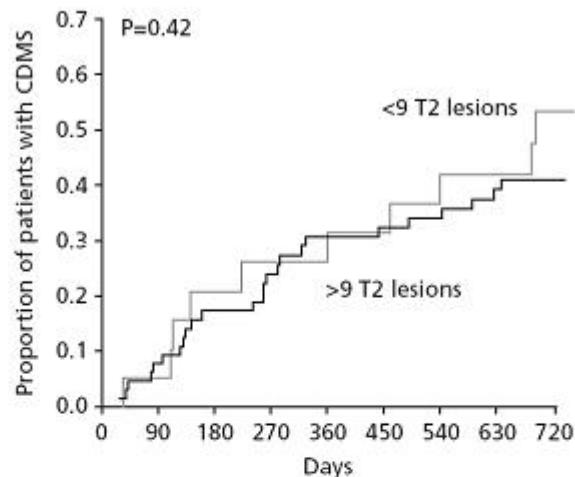
### Monofocal

### MRI findings at screening

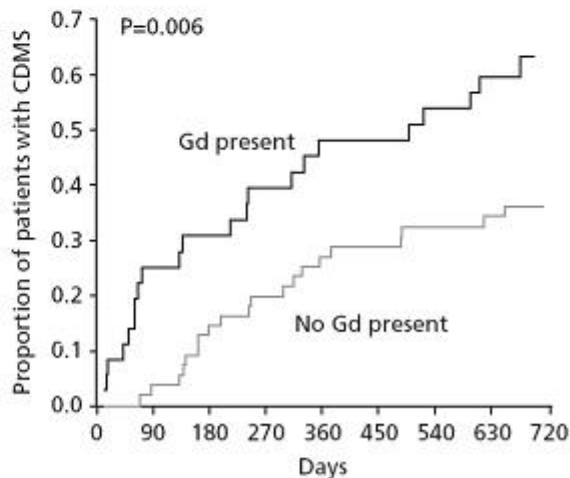
### Multifocal



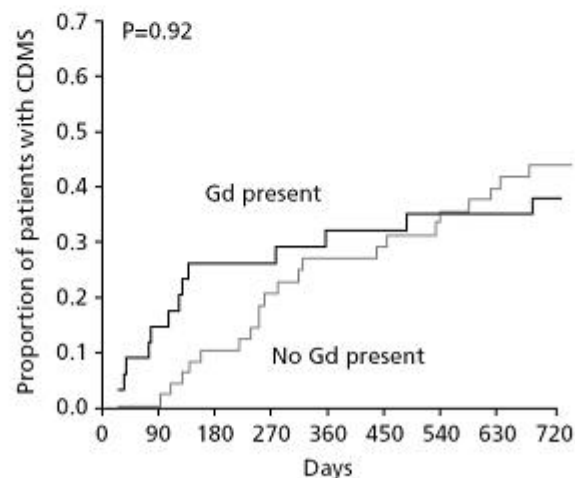
at risk: < 9 T2 lesions	34	28	26	22	6
at risk: ≥ 9 T2 lesions	59	45	35	30	2



at risk: < 9 T2 lesions	19	15	13	11	2
at risk: > 9 T2 lesions	64	51	41	38	14



at risk: no Gd present	56	49	42	36	7
at risk: Gd present	37	24	19	16	1



at risk: no Gd present	47	42	32	28	8
at risk: Gd present	33	23	21	20	8