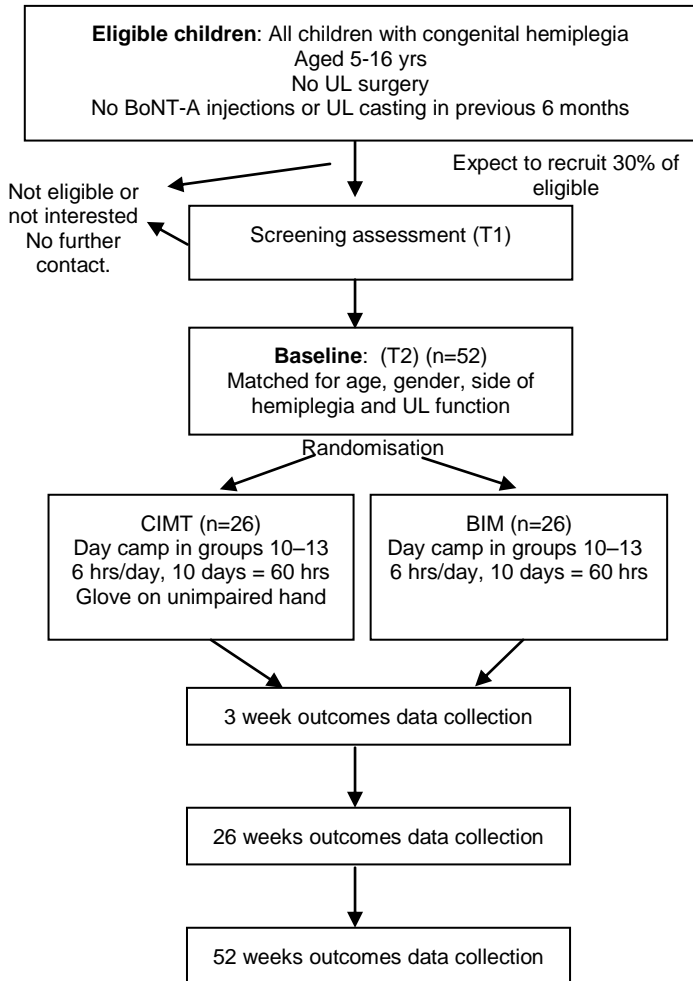


Experimental design



Outcome measures

Screening Measures (T1)

MUUL (10 mins)
AHA (15 mins)
PA (15 mins)
CAPE (20-30 mins)
LIFE-H (1 hour)
Total assessment time: 1 – 1.25 hours

Baseline & 52 week measures (T2&T5)

TMS & fMRI
MUUL
AHA
JTTHF (max 15 mins)
PA
CAPE
COPM (15 mins)
LIFE-H^{*}
CHIEF^{*}
Study Questionnaire^{*}
CPQOL – Adult^{*}
CPQOL-Child^{*}
Kidscreen^{*}
SFA^{**}
^{*} posted to family prior to appointment
Total assessment time: 1.5 + 1 hours
^{**} Telephone interview with teacher (10 mins)

3 and 26 week measures (T3&T4)

TMS & fMRI
MUUL
AHA
JTTHF
PA
CAPE
COPM
LIFE-H^{*}
CPQOL-Adult^{*}
CPQOL-Child^{*}
Kidscreen^{*}
SFA^{**}
^{*} posted to family prior to appointment
Total assessment time: 1.5 hours
^{**} Telephone interview with teacher (10 mins)

Key:-

BoNT-A, Botulinum Toxin A

UL, upper limb

TMS, transcranial magnetic stimulation

fMRI, functional magnetic resonance imaging

AHA, Assisting Hand Assessment

JTTHF, Jebsen Taylor Test of Hand Function

MUUL, Melbourne Assessment of Unilateral Upper Limb Function

PA, Physical Upper Limb Assessment

CAPE, Children's Assessment of Participation and Enjoyment

COPM, Canadian Occupational Performance Measure

LIFE-H, Assessment of Life Habits

PA, physical assessment

SFA, School Function Assessment

CHIEF, Craig Hospital Environmental Inventory

CPQOL- Adult, CP Quality of Life– Adult

CPQOL-Child, CP Quality of Life – Child