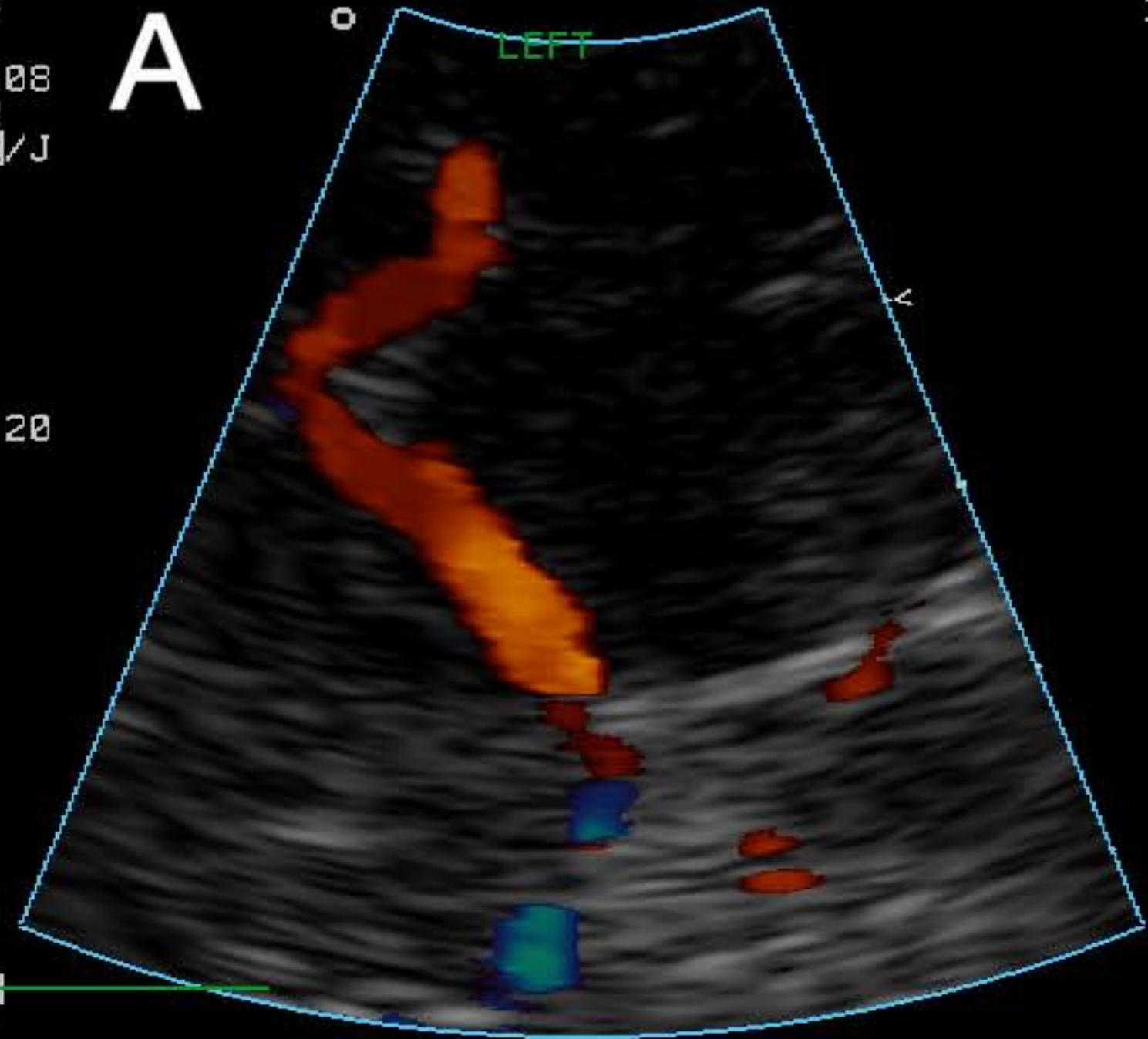


TIC: 2.4  
S4XC  
06 MAY 08  
14:01:32  
2/3/E/L1/J  
AZM

# A



TCD NEW

GN

0:01:20  
GAIN 72  
COMP 70

10CM  
12HZ

PHILIPS 4

1.8MHz  
63  
C  
S  
63

TIC: 1.3  
S4XC  
06 MAY 08  
14:02:40  
2/3/E/L1/J  
AZM

# B

TCD NEW

GN

0:01:20  
GAIN 72  
COMP 70

10CM

GATE: 5.2CM  
LEN: 0.35CM  
e: 41  
▽= 20

PHILIPS

LEFT MCA

1.8MHz



A + S	131	cm/s
D	75.4	cm/s
MN	99.2	cm/s
AT	.080	sec
TAVM	53.2	cm/s
S/D	1.74	
PI	.560	
RI	.424	

1.8MHz  
63  
C  
S  
63