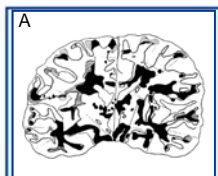
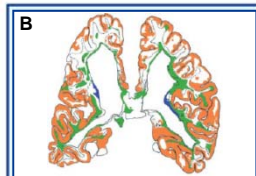


(HISTO)PATHOLOGY

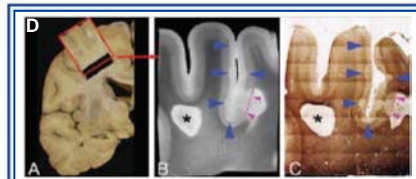


GM pathology more frequently detected



GM pathology is common and widespread

Pathological correlates:
GM \neq WM



Histopathology – high field MRI verification

Underlying correlate of MRI visible vs. invisible lesions

1st detection of MS lesions in (sub)-cortical gray matter

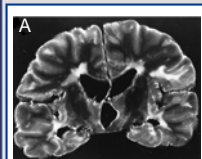
← 1962

Nineties

2000 ----- 2005

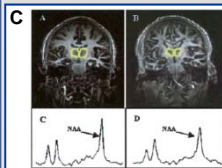
2006 ----- 2011 →

GM lesions hard to visualize with MRI



Quantitative MRI able to detect changes in (NA)GM

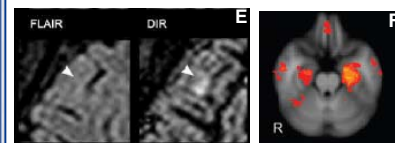
GM atrophy, thalamic atrophy



DIR – scoring recommendations for cortical lesions

(Ultra) High-field MRI

Interest in specific GM structures



NEUROIMAGING