

**Title page (additional file)**

**Diffuse leptomeningeal gliomatosis initially presenting with  
intraventricular hemorrhage: a case report and literature review**

Min Zhu, JunJun Zheng, Yuanzhao Zhu, Hui Wan, Yuchen Wu, Daojun Hong

Department of Neurology, The First Affiliated Hospital of Nanchang University, China

Email address: Min Zhu: zhumin1@126.com; JunJun Zheng: zjj259@163.com; Yuanzhao Zhu:

846366855@qq.com; Hui Wan: ncwanhui@sina.com; Yuchen Wu: wuyuchen52@163.com;

Daojun Hong: hongdaojun@hotmail.com

**Corresponding author:**

Dr. Daojun Hong

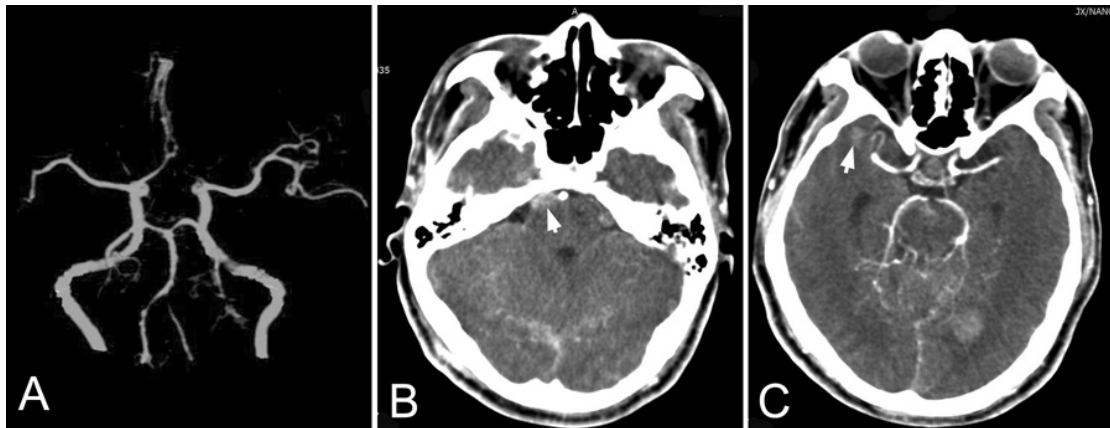
Department of Neurology, The First Affiliated Hospital of Nanchang University

Yong Wai Zheng Street 17<sup>#</sup>, Nanchang, 330006, P.R.China

Telephone: 86-791-8869-2511

Fax number: 86-791-8869-2511

E-mail: hongdaojun@hotmail.com



**Figure 1.** The features of cerebral CT angiography. No aneurysm and vascular malformation were found (A). Multiple lesions with enhancement at the right ventral surface of the pons (B, arrow), and right temporal horn (C, arrow) were observed.