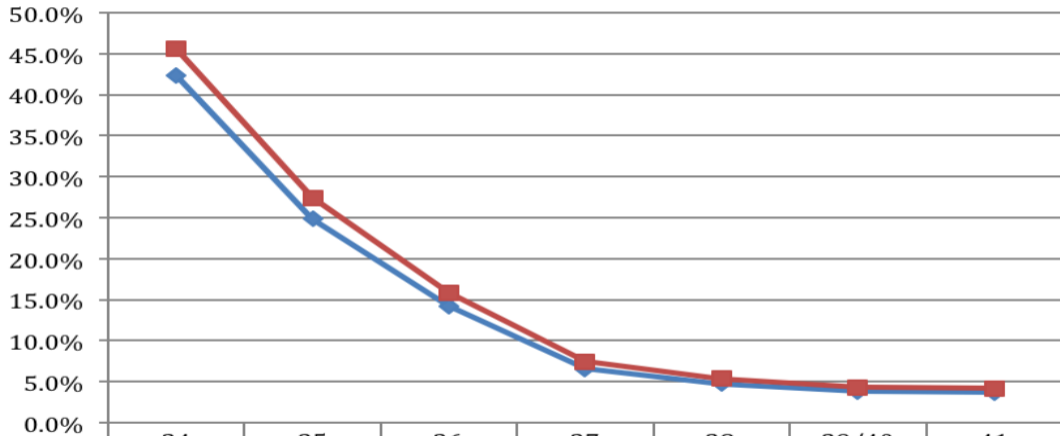


Predicted Probability of 'Any Diagnosis'



◆ high SES

34

42.3%

35

24.8%

36

14.2%

37

6.5%

38

4.7%

39/40

3.8%

41

3.7%

■ low SES

34

45.6%

35

27.4%

36

15.9%

37

7.4%

38

5.4%

39/40

4.3%

41

4.2%

GA (weeks)