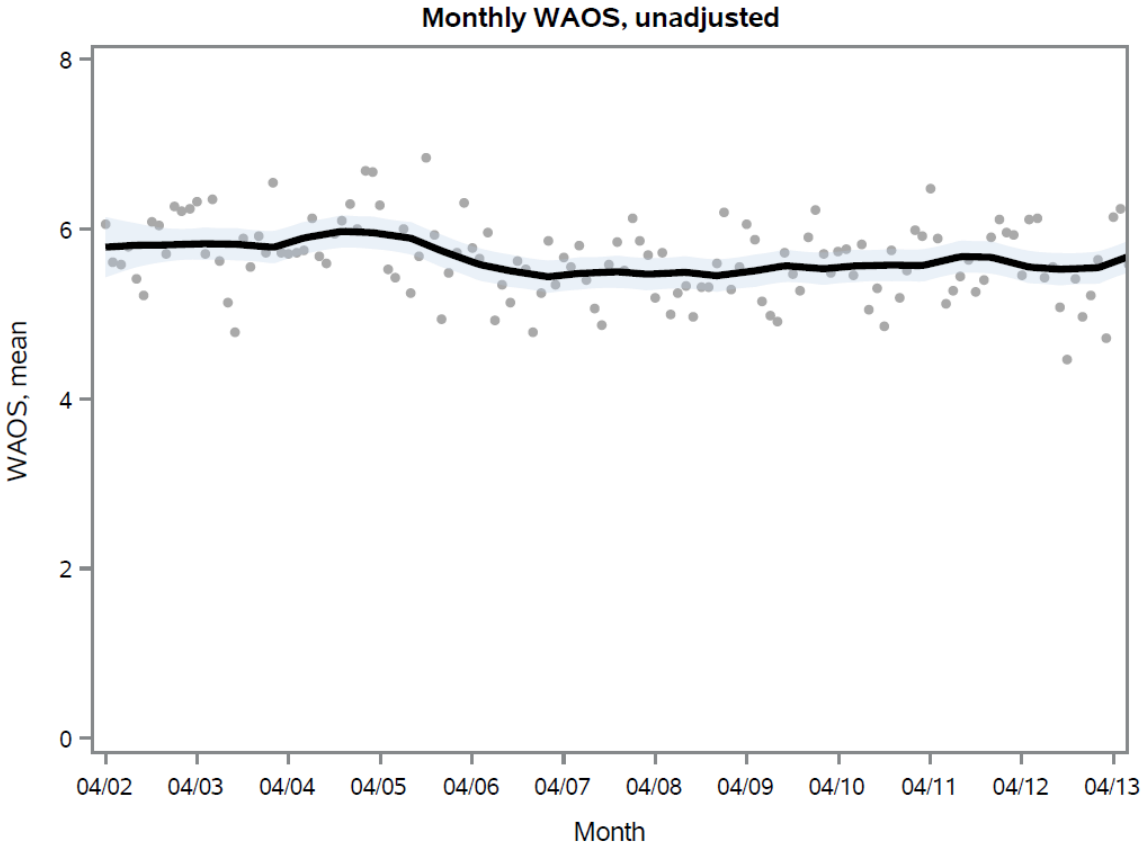
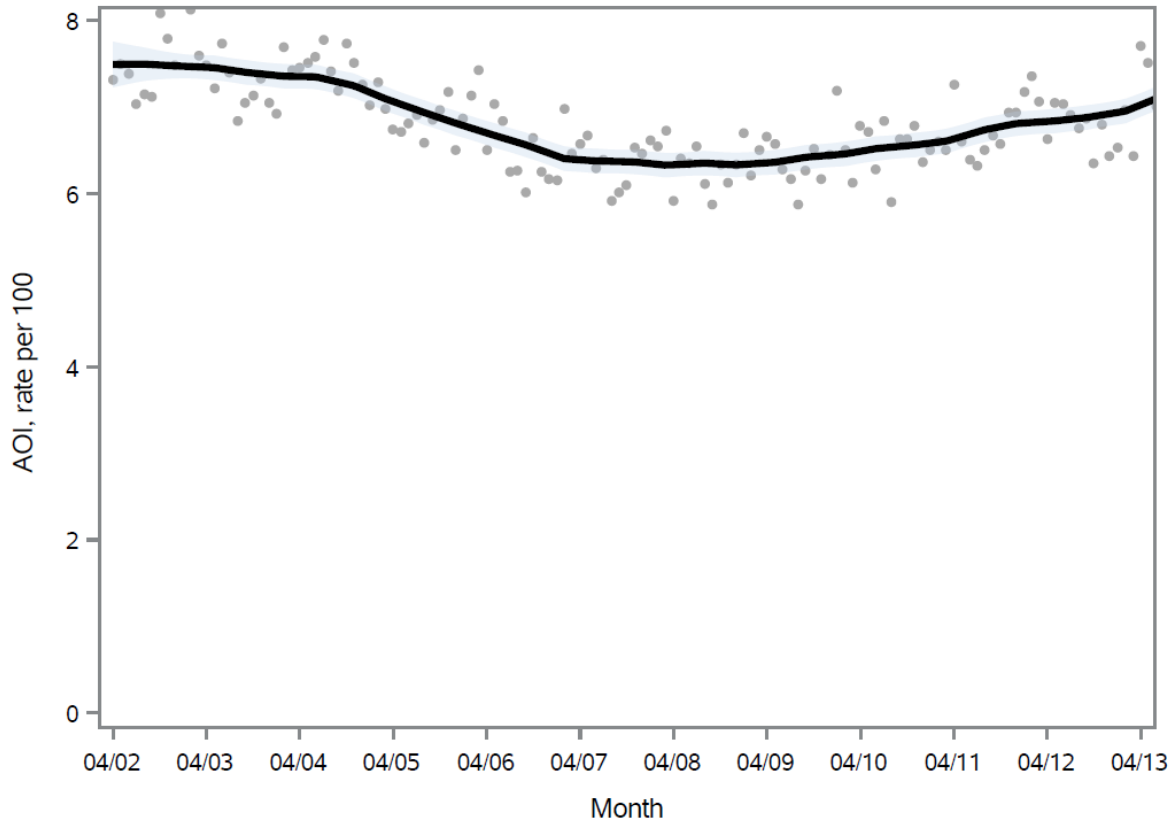


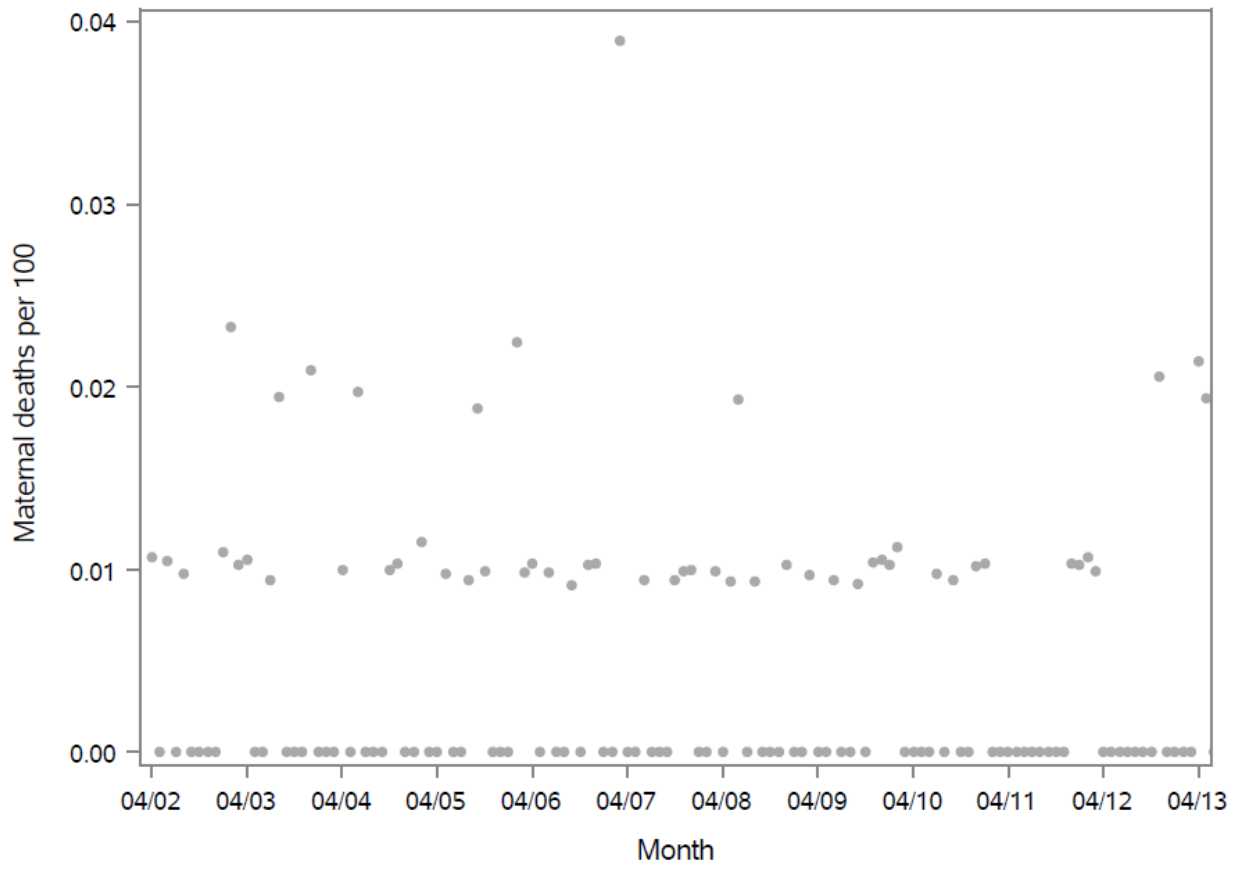
Additional file 3: Crude outcome rates over time, Ontario, Canada, 2002 to 2014



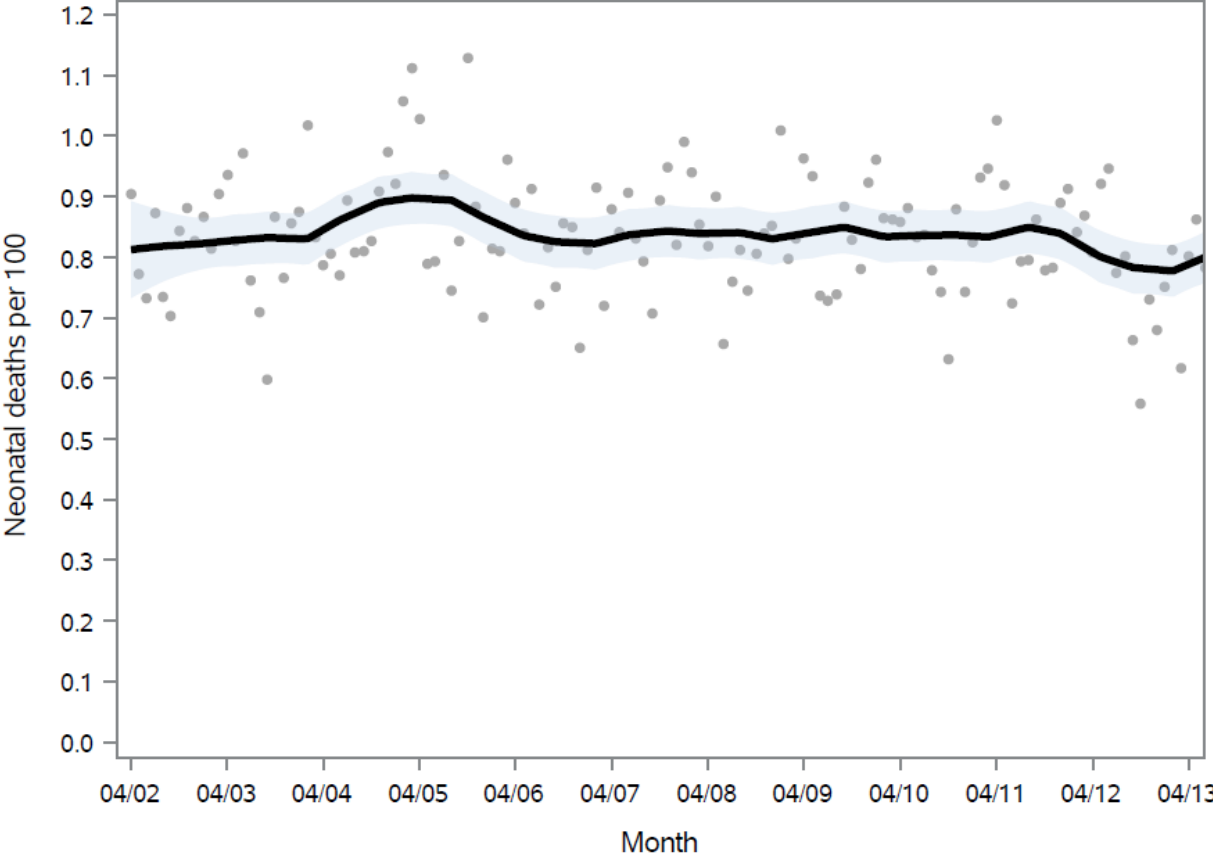
Monthly AOI, unadjusted



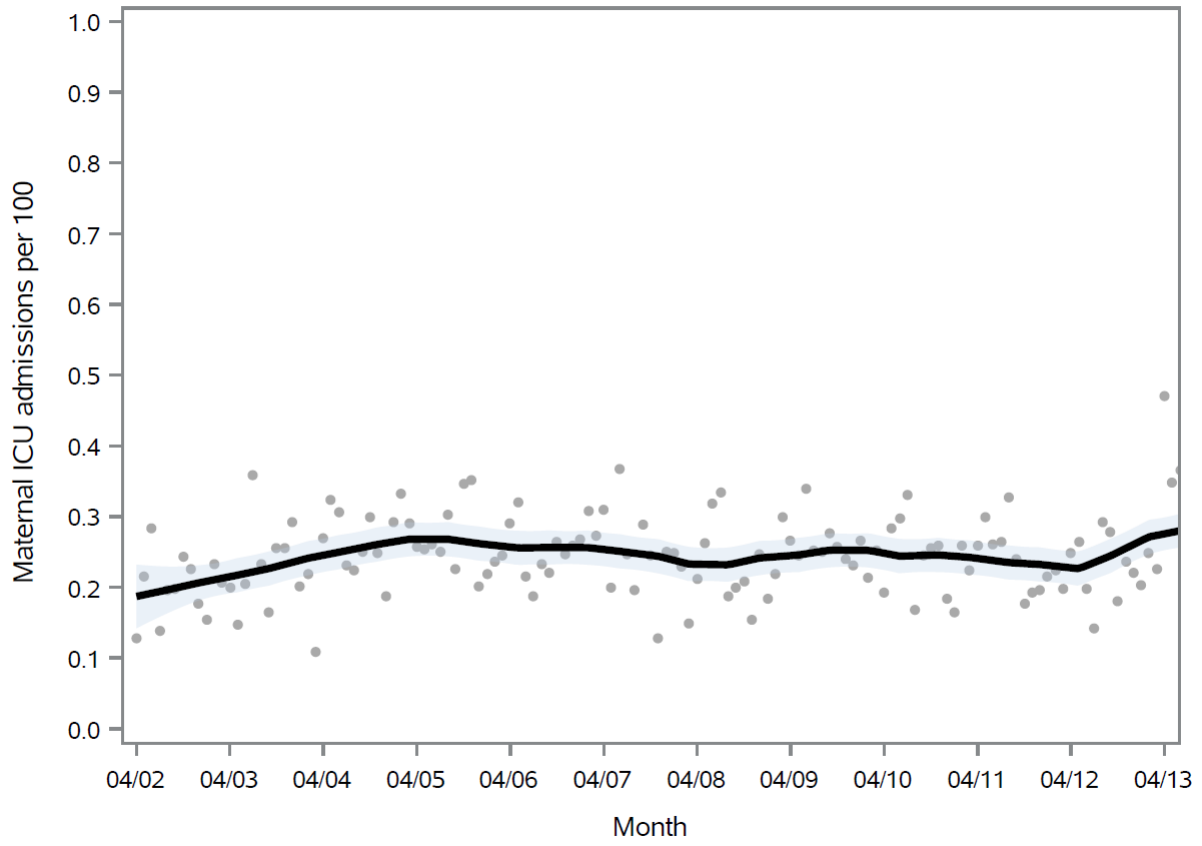
Monthly maternal death rate



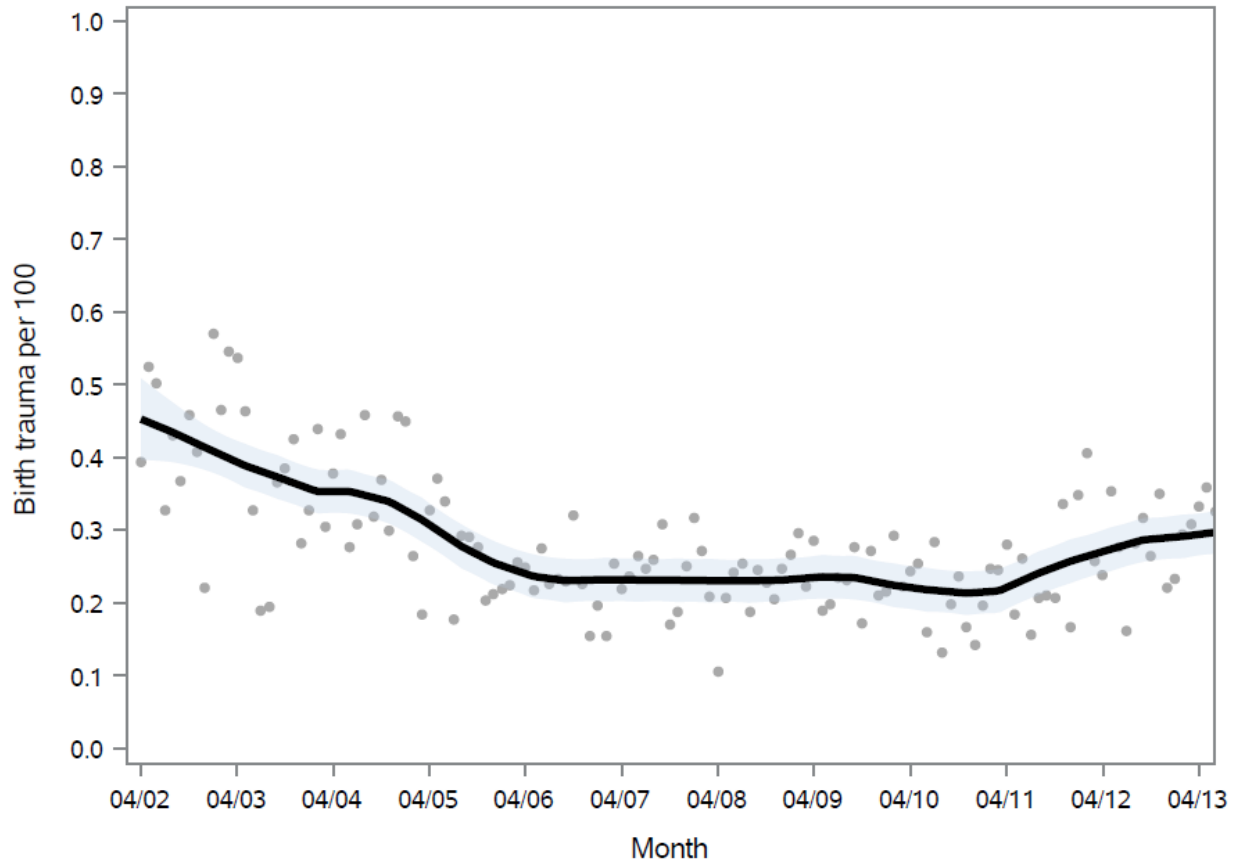
Neonatal death rate



Maternal ICU admission rate

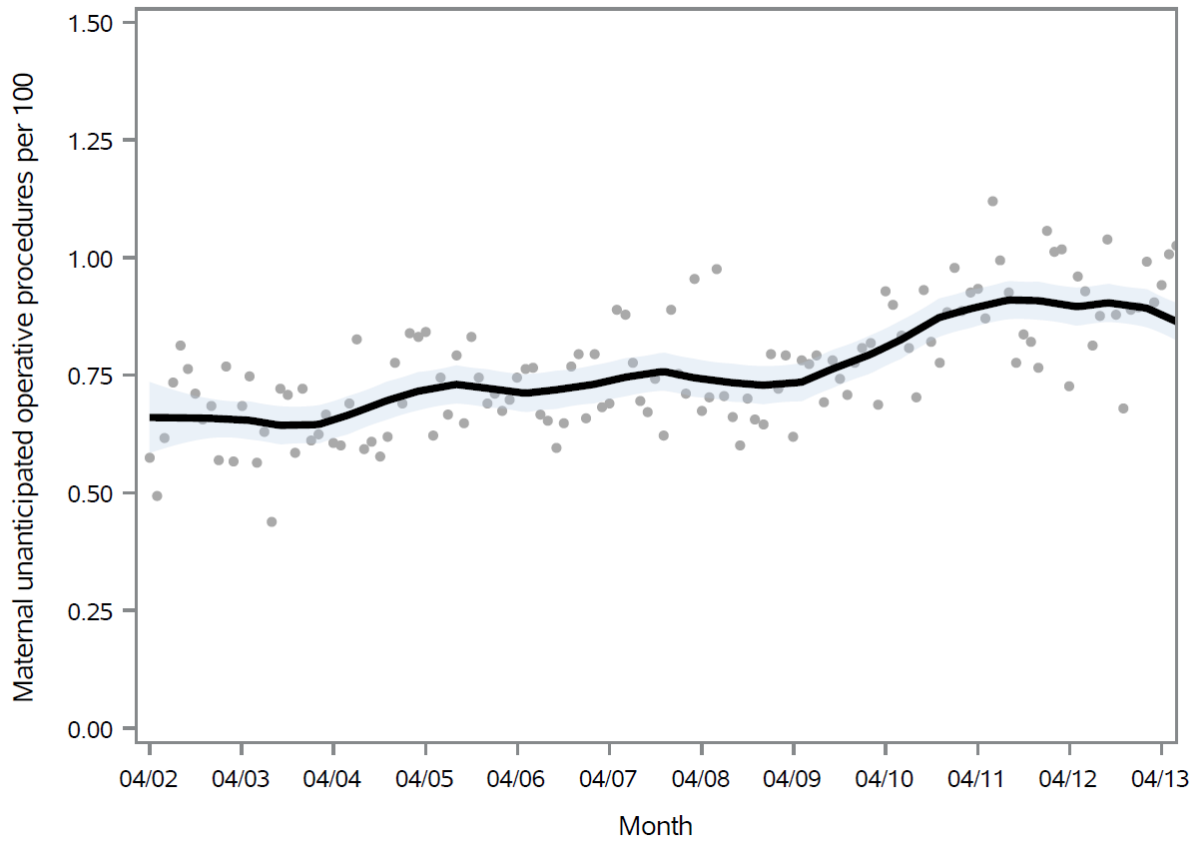


Birth trauma rate



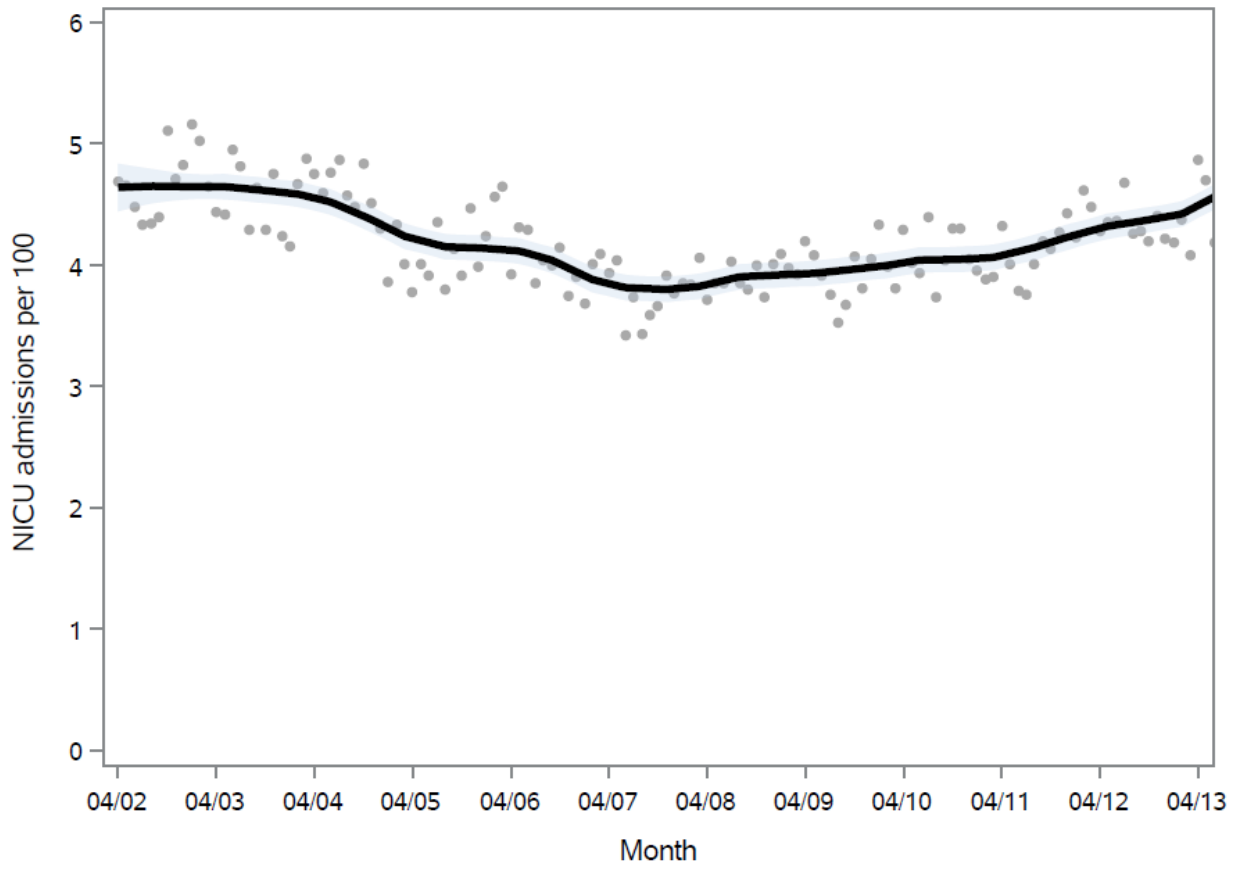
Footnote: Neonatal birth trauma includes cerebral hemorrhage due to birth injury, skeletal injuries due to birth, injuries to spine and spinal cord, brachial plexus, facial nerve or other nerves.

Maternal unanticipated operative procedures rate

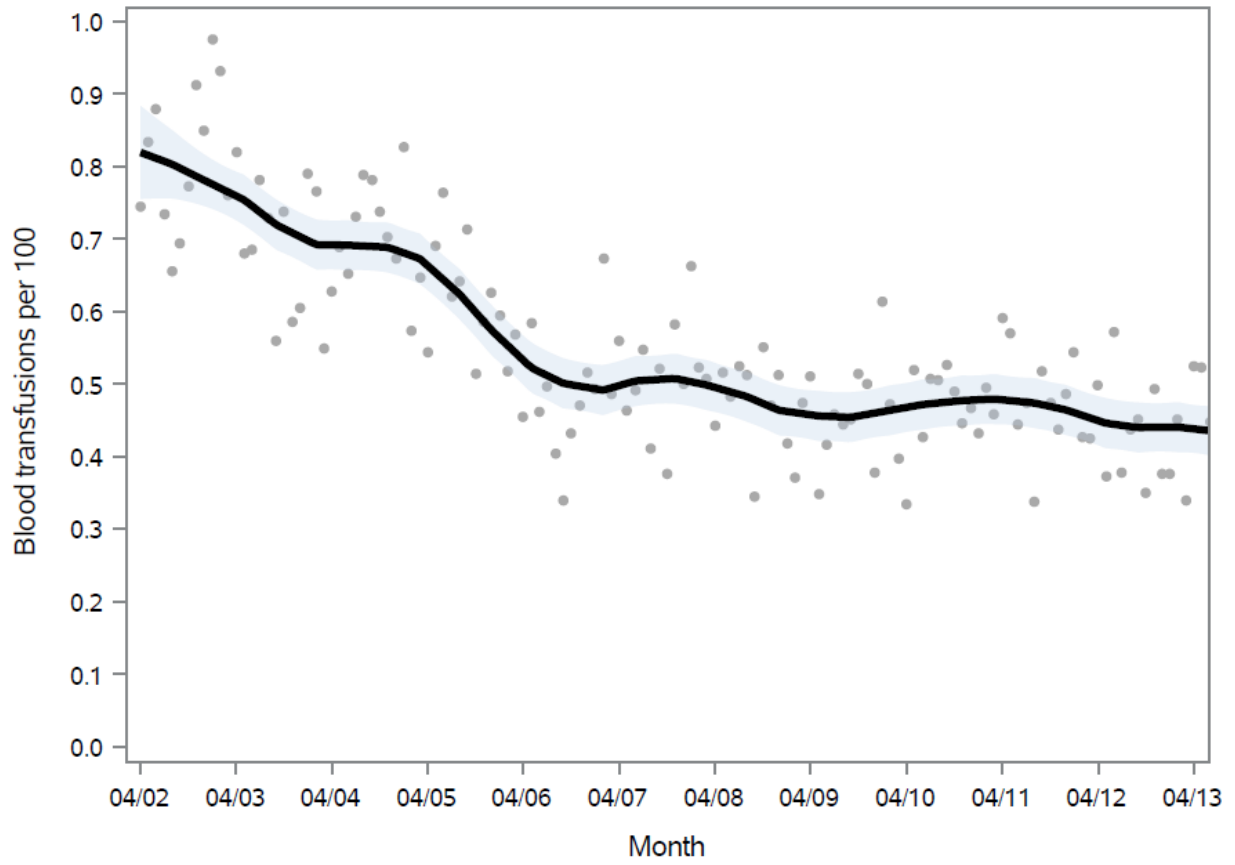


Footnote: Includes procedures to control post-partum bleeding such as D and C following delivery, control of post-partum hemorrhage by ligation or embolization, hysterectomy, etc.

NICU admission rate



Blood transfusion rate



4th degree perineal tear rate

